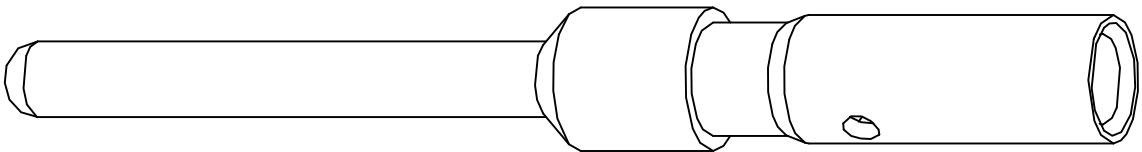
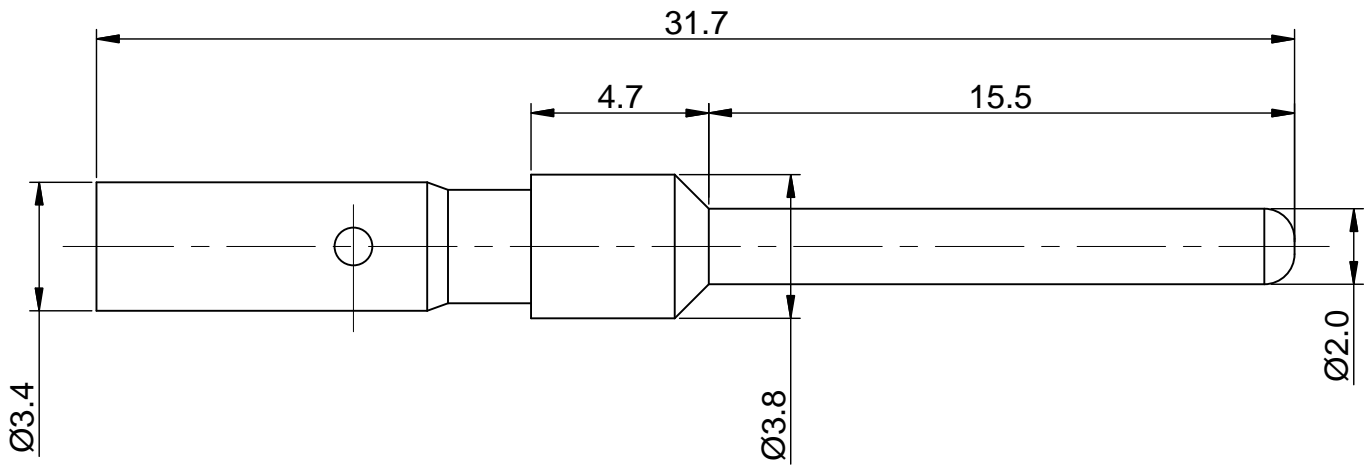
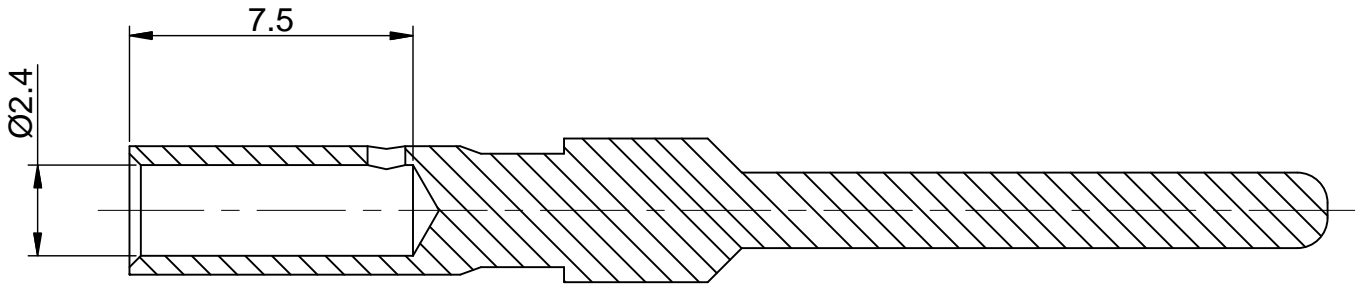



REVISIONS					
REV	ECO	DESCRIPTION	DATE	BY	APPR
B1	-	RELEASE NEW DWG FORMAT	06/16/14	TOD	TOMMY



NOTES: UNLESS OTHERWISE SPECIFIED

- MATERIAL: COPPER ALLOY, GOLD PLATED
- SPECIFICATIONS:
 - RATED CURRENT: 30 AMPS
 - CONTACT RESISTANCE: <3 milliohm
 - AVAILABLE WIRE RANGE: 18AWG~14AWG
 - RoHS COMPLIANT
- ALL DIMENSIONS ARE FOR REFERENCE USE ONLY.

	SEE PART NUMBER			
	CHART			
QUANTITY	PART NUMBER	DESCRIPTION	ITEM	
MATERIALS LIST				
<div>UNLESS OTHERWISE SPECIFIED</div> <div>1) All dimensions are in metric(mm).</div> <div>2) Tolerances are as follows:</div> <div>1 PL DEC ±0.30</div> <div>2 PL DEC ±0.15</div> <div>3 PL DEC ±0.08</div> <div>Fractions ±1/64</div> <div>Angles ±1°</div> <div>3) Note reference = </div> <div>MATERIAL SPECIFICATIONS:</div> <div>PROCESS SPECIFICATIONS:</div> <div>NEXT ASSY:</div>	SIGNATURES	DATE	<div>Amphenol</div> <div>Sine Systems - www.amphenol-sine.com</div> <div>44724 Morley Drive</div> <div>Clinton Township, MI 48036</div>	
	DRAWN: Tod	06/16/14		
	CHECKED:			
	ENGINEER:		Pin contact,14#,Crimp 18~14AWG	
	APPROVAL:			
	CUSTOMER:			
	THIS DRAWING IS SUPPLIED FOR INFORMATION ONLY. DESIGN FEATURES, SPECIFICATIONS AND PERFORMANCE DATA SHOWN HEREON ARE THE PROPERTY OF THE AMPHENOL CORPORATION. NO RIGHTS OF REPRODUCTION ARE IMPLIED. ALL DIMENSIONS ARE SUBJECT TO NORMAL MANUFACTURING VARIATIONS.			
	SIZE	TYPE	DWG NO:	REVISION
	B	C-	SC0000040	B1
	SCALE: NONE			SHEET 1 OF 1

Mouser Electronics

Authorized Distributor

Click to View Pricing, Inventory, Delivery & Lifecycle Information:

[Amphenol:](#)

[SC000040](#)