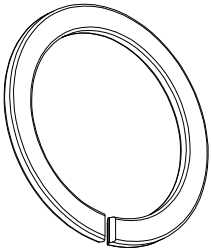
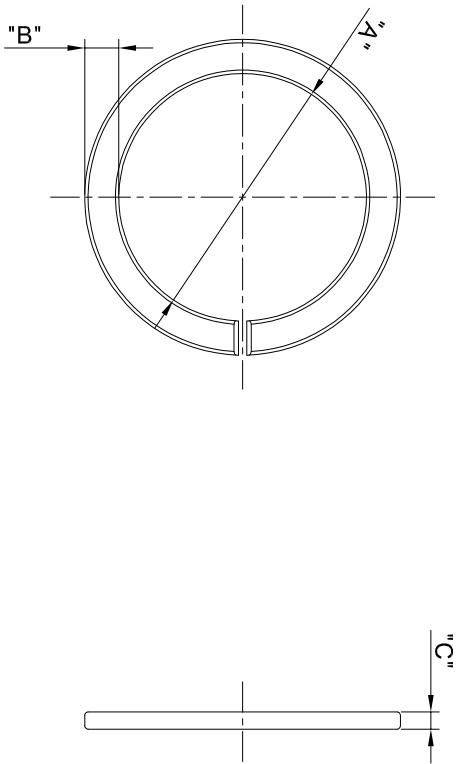


REVISIONS				
REV	ECO	DESCRIPTION	DATE	BY APPR
A1		FIRST RELEASED	Apr.05.2016	Drack Tommy
A2		UPDATE THE NOTES	JUL20.2016	Drack Tommy
A3		ADD 16# & 18# PART	Nov.22.2017	Nick Tommy



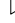

NOTES : (UNLESS OTHERWISE SPECIFIED)
1. MATERIAL : THERMOPLASTIC , UL94 V-0.

2. SPECIFICATIONS :
2.1, OPERATING TEMPERATURE : -40°C ~ 125°C.
2.2, RoHS COMPLIANT.

3. ALL DIMENSIONS ARE FOR REFERENCE USE ONLY.

SHELL	P/N	DIM A	DIM B	DIM C
8#	RTS8CCRx	Ø11.2	2.0	1.0
10#	RTS10CCRx	Ø14.5	2.0	1.0
12#	RTS12CCRx	Ø18.5	1.9	1.2
14#	RTS14CCRx	Ø21.7	1.9	1.8
16#	RTS16CCRx	Ø24.2	1.9	1.0
18#	RTS18CCRx	Ø27.6	1.9	1.0

"X" DENOTE COLOR:
WHEN "X"="G", GREEN, PANTONE 348C.
WHEN "X"="R", RED, PANTONE 194C.
WHEN "X"="Y", YELLOW, PANTONE 123C.

QUANTITY	PART NUMBER	DESCRIPTION		ITEM
MATERIALS LIST				
UNLESS OTHERWISE SPECIFIED		1) All dimensions are in millimeters. 2) Tolerances are as follows: 1 Pt. DEC 40.30 Fractions ±.164 1 Pt. DEC 40.30 Angles ±1° 3 Pt. DEC 40.08		
3) Note reference = 				
MATERIAL SPECIFICATIONS:				
PROCESS SPECIFICATIONS:				
NEXT ASST:				
		SIGNATURES	DATE	
		DRAWN: 	Nov.22.2017	
		CHECKED: Tol	Nov.22.2017	
		DATE/REVISION:		
		APPROVAL: Tommy	Nov.22.2017	
		CUSTOMER:		
		THIS DRAWING IS SUBMITTED FOR INFORMATION ONLY. IT IS NOT TO BE USED FOR PRODUCTION. THE MANUFACTURING VARIATIONS ARE NOT TO BE USED FOR PRODUCTION. NO PROFITS OF REPRODUCTION ARE LIKED. ALL MANUFACTURING VARIATIONS ARE NORMAL.		
SIZE		TYPE	SCALE	REVISION
B		C-	NONE	A3
RTSxxCCRx				
ECO-MATE IDENTIFY RING				
SIZE 08,10,12,14,16,18				
Sine Systems - www.amphenol-sine.com				
44724 Morley Drive				
Clinton Township, MI 48036				

Mouser Electronics

Authorized Distributor

Click to View Pricing, Inventory, Delivery & Lifecycle Information:

[Amphenol:](#)

[RTS12CCRR](#)