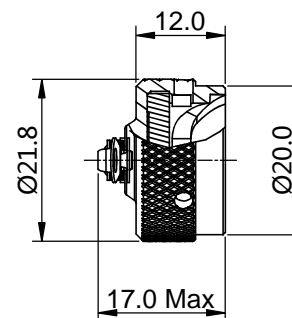


REVISIONS					
REV	ECO	DESCRIPTION	DATE	BY	APPR
B1	-	RELEASED DRAWING	JUN-23-2014	BEN	TOMMY



RT010DC X X  
① ②

P/N	①	②	CHAIN	PLATING
RT010DC	---	---	NO CHAIN	NICKEL PLTING
RT010DCA	---	A	NO CHAIN	BLACK ANODIZING
RT010DCG	G	---	CHAIN	NICKEL PLTING
RT010DCGA	G	A	CHAIN	BLACK ANODIZING

#### NOTES : (UNLESS OTHERWISE SPECIFIED)

##### 1. MATERIAL :

RIVET : COPPER ALLOY,NICKEL PLATING

CHAIN : STAINLESS STEEL.

DUST CAP : AL ALLOY , NICKEL PLATED.

O-RING : NBR.

##### 2. SPECIFICATIONS :

2.1 OPERATING TEMPERATURE : -40°C ~ +105°C.

2.2 IP--CLASS : IP67.

2.3 MATING CYCLES DURABILITY : 500 CYCLES MIN.

2.4 ROHS COMPLIANT.

##### 3. ALL DIMENSIONS ARE FOR REFERENCE USE ONLY.

SEE PART NUMBER CHART			
QUANTITY	PART NUMBER	DESCRIPTION	ITEM
<b>MATERIALS LIST</b>			
UNLESS OTHERWISE SPECIFIED 1) All dimensions are in metric(mm). 2) Tolerances are as follows: 1 PL DEC ±0.30   Fractions ±1/64 2 PL DEC ±0.15   Angles ±1° 3 PL DEC ±0.08 3) Note reference =		SIGNATURES      DATE DRAWN: BEN      JUN-23-2014 CHECKED: ENGINEER: APPROVAL:	
MATERIAL SPECIFICATIONS:		 Sine Systems - www.amphenol-sine.com 44724 Morley Drive Clinton Township, MI 48036	
PROCESS SPECIFICATIONS:		ECO-MATE,DUST CAP FOR RECEPTACLES,SIZE 10	
NEXT ASSY:		SIZE TYPE B C- SCALE: NONE	DWG NO: RT010DCxx REVISION: B1 SHEET 1 OF 1

# Mouser Electronics

Authorized Distributor

Click to View Pricing, Inventory, Delivery & Lifecycle Information:

[Amphenol:](#)

[RT010DCG](#)