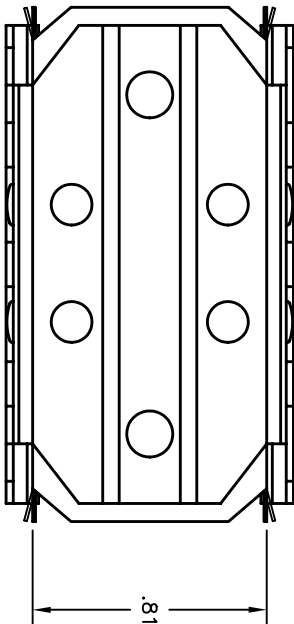




- NOTES:
1. MATERIALS:  
OUTER TRACK: ALUMINUM ALLOY PER QQ-A-225. CHEMICAL COATING PER MIL-C-5541, CLASS 3  
INNER BRACKETS AND RIVETS: STAINLESS STEEL PER QQ-S-766, PASSIVATED  
LATCH: BERYLLIUM COPPER #172 PER QQ-C-533, BRIGHT FINISH  
WIRING PROTECTOR: ARAMID PAPER PER MIL-I-24202
  2. PERFORMANCE SPECIFICATIONS:  
OPERATING TEMPERATURE: -65 TO 125 DEG C
  3. FOR USE WITH PCD SOCKET PART NO'S RSE116175, RSE116185, AND RSE116195



DIMENSIONS		TOLERANCES	PROJECTION		SPECIFICATION DRAWING				TITLE							
ANSI Y14.5M UNITS: INCHES ACAD FILE		.XX ±.01 .XXX ±.005 ANGLES ±2°			ENGR MEL 10/25/00								MOUNTING TRACK RELAY SOCKET M12883/53-001			
ORIGINAL	THIS DOCUMENT CONTAINS PROPRIETARY INFORMATION WHICH IS THE CONFIDENTIAL PROPERTY OF PCD, INC. PEABODY, MA, USA		CHKD		SIZE		DWG NO.		RST145005				REV			
			APPD		A		—									
			CODE: 58982		SCALE: NONE		SHEET 1 OF 1									

# Mouser Electronics

Authorized Distributor

Click to View Pricing, Inventory, Delivery & Lifecycle Information:

[Amphenol:](#)

[RST145005](#)