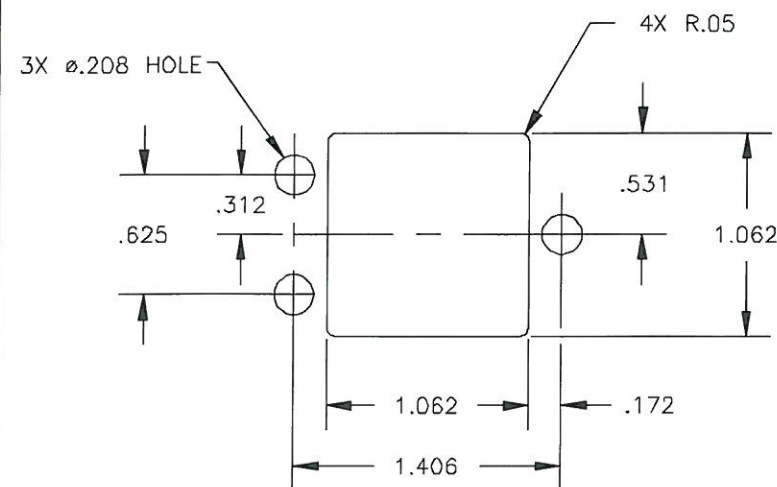
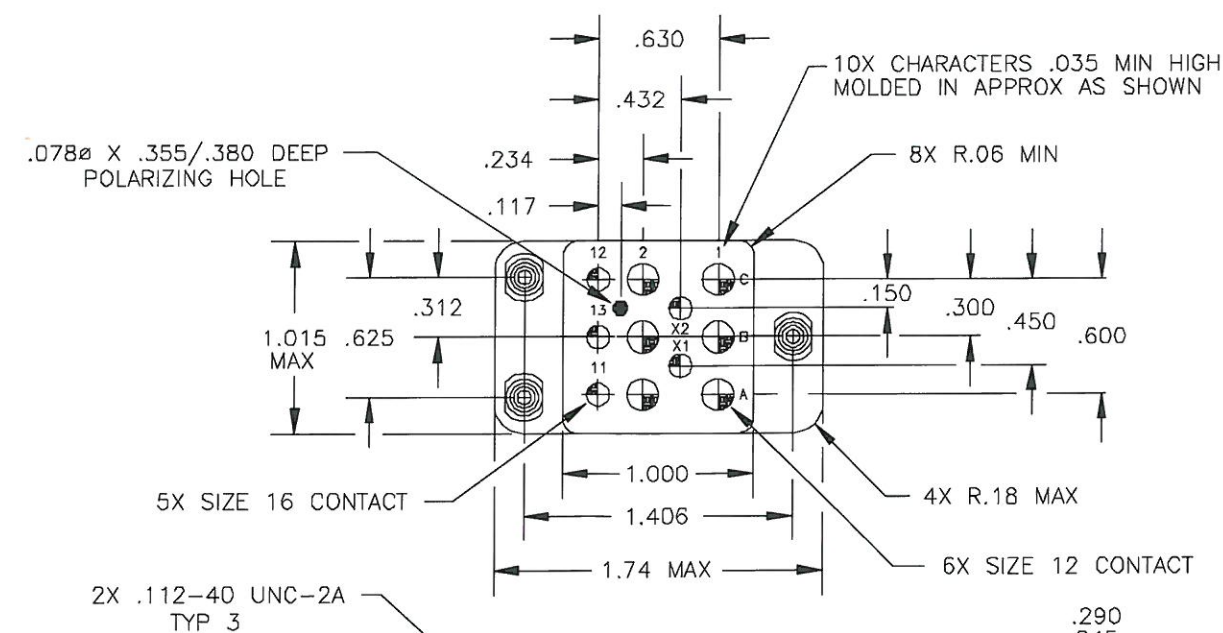


REV	ECN	APP'D
K	2949	JR 11/30/98
L	6750	<i>10/9/11</i>



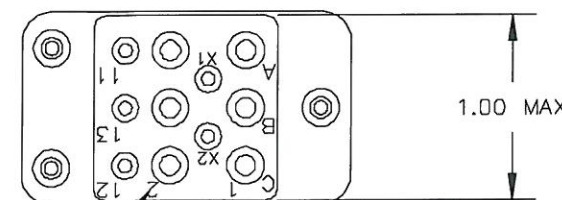
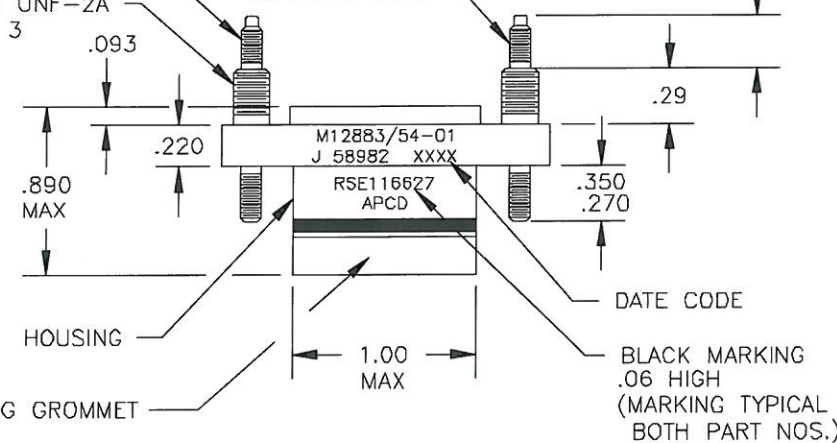
RECOMMENDED MOUNTING
PANEL HOLE



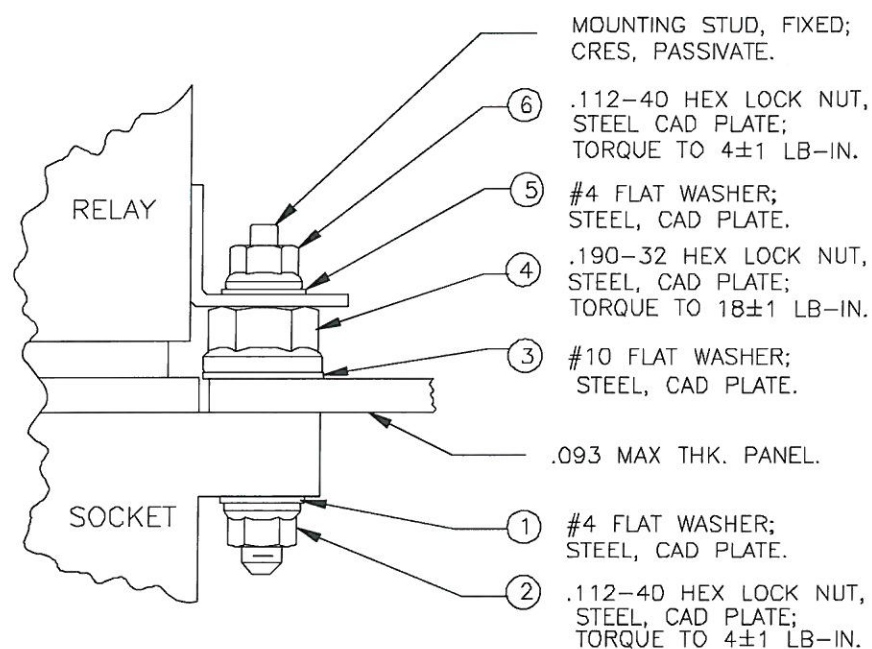
2X .112-40 UNC-2A
TYP 3

.190-32 UNF-2A
TYP 3

3X FIXED STUD



POSITION MARKING
COLOR: WHITE



MOUNTING HARDWARE

INSTALLATION SEQUENCE BY ITEM NUMBER
TYP 3 PLACES

NOTES:

- CONFORMS TO PERFORMANCE REQUIREMENTS OF MIL-DTL-12883.
- MATERIALS:
 - HOUSING - POLYETHERIMIDE, COLOR: BLUE-GREEN.
 - GROMMET - SILICONE ELASTOMER, 50±10 DUROMETER, COLOR: RED.
- SOCKET CONTACTS CONFORM TO PERFORMANCE REQUIREMENTS OF SAE-AS39029, GOLD OVER NICKEL PLATE - SEE TABLE.
- COMPLETE MOUNTING HARDWARE SUPPLIED AS SHOWN.
- OPERATING TEMPERATURE: +125°C/-65°C CONTINUOUS.
- CONTACT INSTALLATION TOOLS:

	#12 CONTACT	#16 CONTACT
CRIMP TOOL:	M22520/1-01	M22520/1-01
POSITIONER:	M22520/1-02	M22520/1-02
INSERTION/REMOVAL:	M81969/14-04	M81969/14-03

PART NO.	CONTACTS SUPPLIED		MARKING
	SZ 12/12 M39029/92-535	SZ 16/16 M39029/92-533	
RSE116626	-	-	RSE116627
RSE116627	6	5	

TITLE

RELAY SOCKET
3 POLE, 25 AMP
(6) SZ 12, (5) SZ 16

DIMENSIONS	TOLERANCES	PROJECTION	Amphenol Pcd
ANSI Y14.5M UNITS: INCHES ACAD FILE	.XX ±.01 .XXX ±.005 ANGLES ±2°		SPECIFICATION DRAWING
ORIGINAL 	THIS DOCUMENT CONTAINS PROPRIETARY INFORMATION WHICH IS THE CONFIDENTIAL PROPERTY OF AMPHENOL PCD, BEVERLY, MA, USA		ENGR A. PATRIE 11/23/98
			CHKD <i>10/4/11</i>
			APPD <i>10/9/11</i>

SIZE	DWG NO.	REV
B	RSE116626	L
CODE: 58982	SCALE: 1X	SHEET 1 OF 1

Mouser Electronics

Authorized Distributor

Click to View Pricing, Inventory, Delivery & Lifecycle Information:

[Amphenol:](#)

[RSE116627](#)