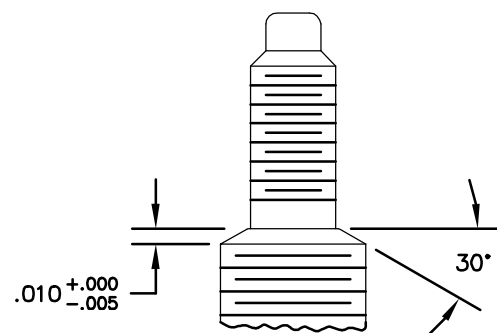
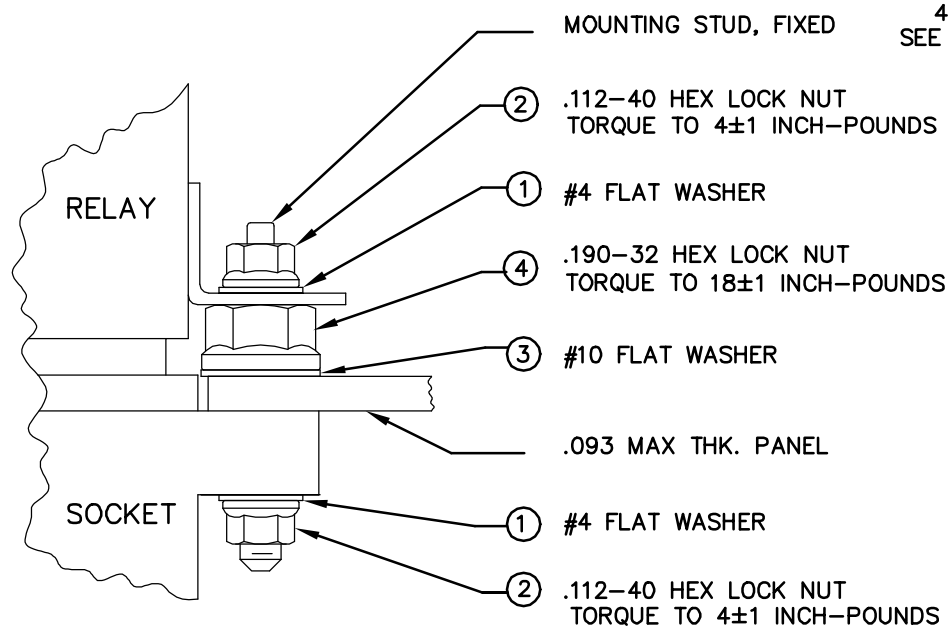
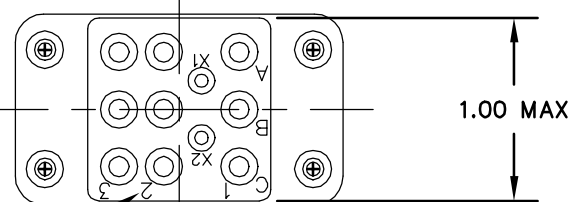
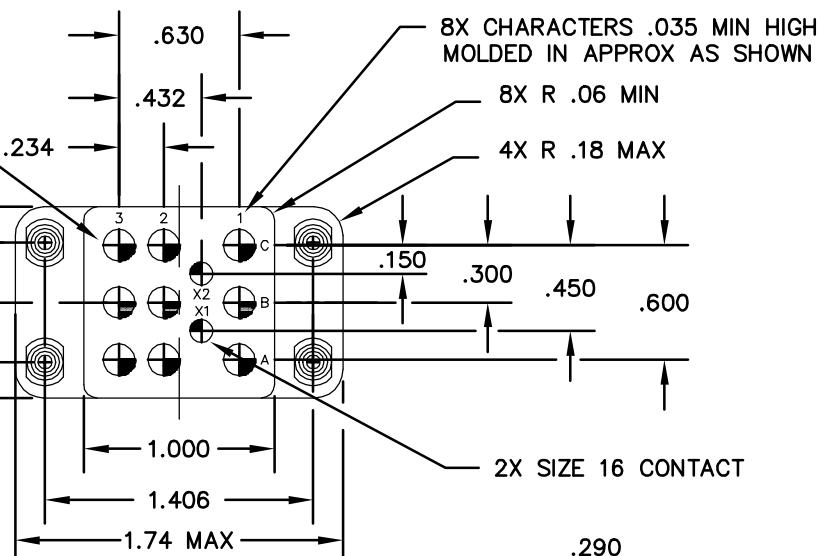
RECOMMENDED MOUNTING
PANEL CUTOUTDETAIL A
TYP 4
SCALE: 4X

BOTTOM MOUNTING HARDWARE

INSTALLATION BY ITEM NUMBER
SEE TABLE
TYP 4 PLACES

9X SIZE 12 CONTACT

2X .112-40 UNC-2A
TYP 4.190-32 UNF-2A
TYP 44X STUD
SEE NOTE 1.C)

SEE NOTE 1.G

NOTES:

- REQUIREMENTS:
 - SHALL MEET THE APPLICABLE ENVIRONMENTAL REQUIREMENTS OF MIL-S-12883.
 - DIELECTRIC STRENGTH: AFTER INSTALLATION OF CONTACTS DIELECTRIC STRENGTH IS 1500 VRMS, 1 mA OF LEAKAGE, 25°C, CONTACT TO CONTACT.
 - STUDS TO BE FIXED IN PLACE IN THE BODY AND DESIGNED TO PREVENT ROTATION, WITHOUT ADDITIONAL HARDWARE, WHEN SUBJECTED TO THE FOLLOWING TEST TORQUE:

THREAD SIZE	TEST TORQUE (INCH-POUNDS)
.112-40	8+1, -0
.190-32	24+1, -0
 - ELECTRICAL ENGAGEMENT: .112 MAX DISTANCE FOR POINT OF ELECTRICAL CONTACT FROM MATING FACE OF SOCKET INSULATOR TO THE SOCKET CONTACT.
 - OPERATING TEMPERATURE: -65°C TO +125°C.
 - STUD TENSILE STRENGTH: 90,000 PSI MIN.
 - CONTACT LOCATIONS TO BE MARKED IN WHITE INK ON WIRE SEALING GROMMET. (AW-2158)
- MATERIALS:
 - HOUSING - POLYETHERIMIDE, COLOR: GREEN.
 - GROMMET - SILICONE ELASTOMER, 50±10 DUROMETER, COLOR: RED.
 - MOUNTING STUD - STAINLESS STEEL, PASSIVATED.
- SOCKET CONTACTS, CRIMP AND INSTALLATION TOOLS ARE NOT INCLUDED. REQUIREMENTS ARE FOR REFERENCE ONLY.
 - CONTACTS:

2 SIZE 16 M39029/92-533
9 SIZE 12 M39029/92-535
 - CONTACT TOOLS:

	#16 CONTACT	#12 CONTACT
CRIMP TOOL:	M22520/1-01	M22520/1-01
POSITIONER:	M22520/1-02	M22520/1-02
INSERTION/REMOVAL:	M81969/14-03	M81969/14-04
- MOUNTING HARDWARE NOT INCLUDED. SEE MOUNTING DIAGRAM FOR SUGGESTED MOUNTING APPLICATIONS AND TABLE FOR DIMENSIONS.

ITEM	REQ'D	P/N	DESCRIPTION
1	8	200000410	#4 FLAT WASHER; CRES, PASSIVATE .220 MAX O.D. X .018 MAX THICK
2	8	200003810	.112-40 UNJC-3B HEX LOCK-NUT, CRES, SILVER PLATED, .206 MAX DIA X .176 MAX HEIGHT
3	4	200002901	#10 FLAT WASHER; CRES, PASSIVATE .360 MAX O.D. X .036 MAX THICK
4	4	200002502	.190-32 UNJF-3B HEX LOCK-NUT, CRES, SILVER PLATED, .330 MAX DIA X .190 MAX HEIGHT

DIMENSIONS

ANSI Y14.5M
UNITS: INCHES
ACAD FILE

PROJECTION



SPECIFICATION DRAWING

ENGR
J. TON 9/7/94CHKD
J. RUTKOWSKI

APPD

THIS DOCUMENT CONTAINS
PROPRIETARY INFORMATION WHICH
IS THE CONFIDENTIAL PROPERTY
OF PCD, INC. PEABODY, MA, USA

pcd

TITLE

RELAY SOCKET
3 POLE, 25 AMP
(9) SZ 12, (2) SZ 16SIZE
B

DWG NO.

RSE112320

REV
A

CODE: 58982

SCALE: 1X

SHEET 1 OF 1

Mouser Electronics

Authorized Distributor

Click to View Pricing, Inventory, Delivery & Lifecycle Information:

[Amphenol:](#)

[RSE112320](#)