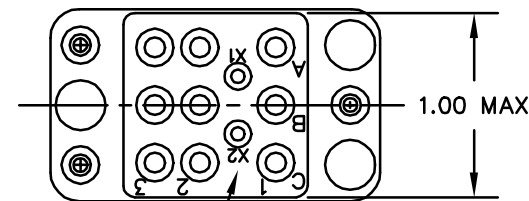
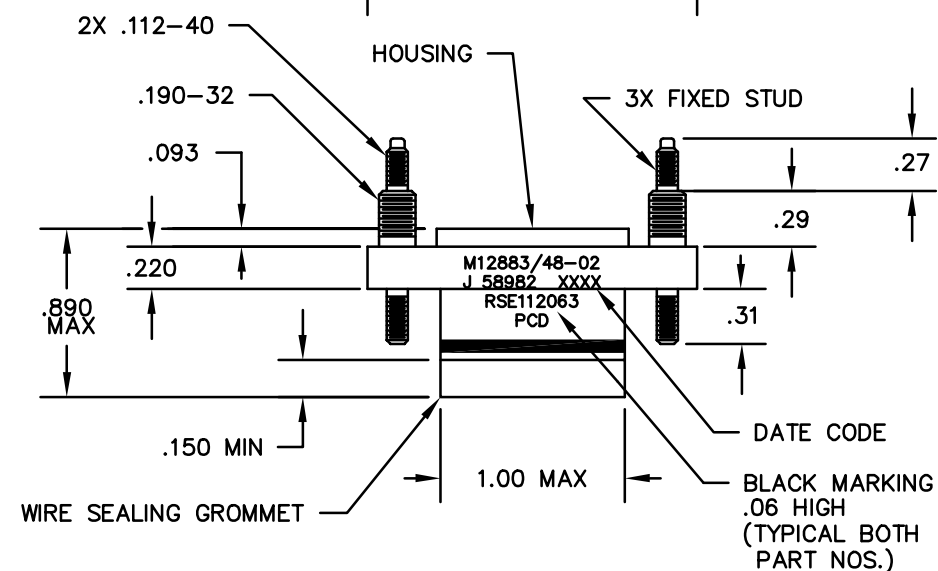
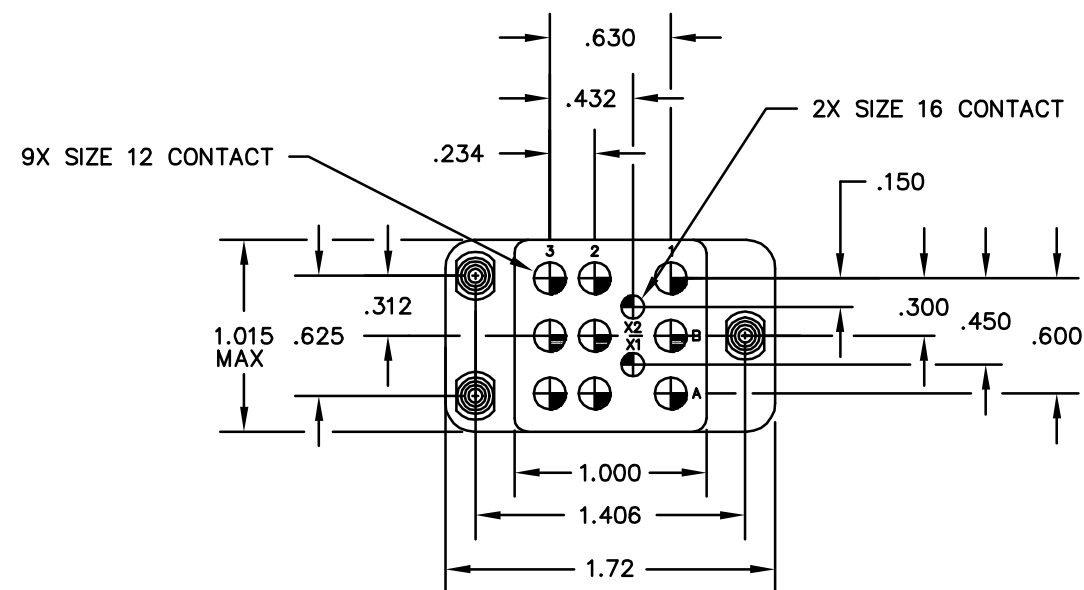
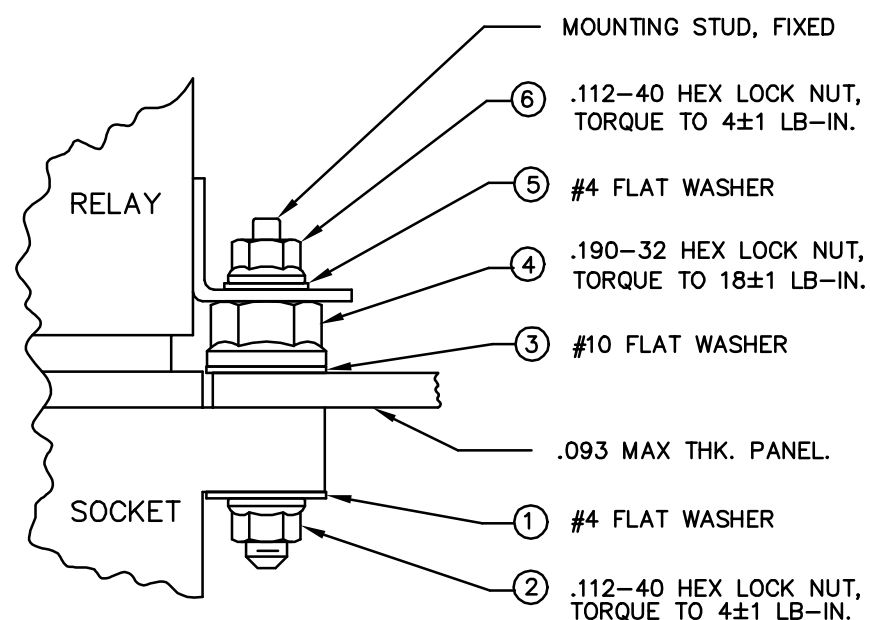


RECOMMENDED MOUNTING
PANEL HOLE



POSITION MARKING
COLOR: WHITE





MOUNTING HARDWARE

INSTALLATION SEQUENCE BY ITEM NUMBER TYP 3 PLACES

- NOTES:
1. CONFORMS TO PERFORMANCE REQUIREMENTS OF MIL-PRF-12883
 2. MATERIALS:
 - A. HOUSING - POLYETHERIMIDE, COLOR: BLUE-GREEN.
 - B. GROMMET - SILICONE ELASTOMER, COLOR: RED.
 3. SOCKET CONTACTS CONFORM TO PERFORMANCE REQUIREMENTS OF MIL-C-39029, GOLD OVER NICKEL PLATE.
 4. COMPLETE MOUNTING HARDWARE SUPPLIED.
 5. OPERATING TEMPERATURE: +125°C/-65°C CONTINUOUS.
 6. CONTACT INSTALLATION TOOLS:

	<u>#12 CONTACT</u>	<u>#16 CONTACT</u>
CRIMP TOOL:	M22520/1-01	M22520/1-01
POSITIONER:	M22520/1-02	M22520/1-02
INSERTION/REMOVAL:	M81969/14-04	M81969/14-03.

PART NO.	CONTACTS SUPPLIED	
	SZ 12/12 CNS128900	SZ 16/16 CNS126900
RSE112062	—	—
RSE112063	9	2

DIMENSIONS ANSI Y14.5M UNITS: INCHES ACAD FILE	TOLERANCES .XX ±01 .XXX ±.005 ANGLES ±2°	PROJECTION 	SPECIFICATION DRAWING			TITLE RELAY SOCKET SIZE 12 & 16 FIXED STUD		
			ENGR A. PATRIE 9/17/98					
ORIGINAL	THIS DOCUMENT CONTAINS PROPRIETARY INFORMATION WHICH IS THE CONFIDENTIAL PROPERTY OF PCD, INC. PEABODY, MA, USA	CHKD		SIZE B	DWG NO. RSE112062			REV K
		APPD		CODE: 58982			SCALE: 1:1	SHEET 1 OF 1

Mouser Electronics

Authorized Distributor

Click to View Pricing, Inventory, Delivery & Lifecycle Information:

[Amphenol:](#)

[RSE112062](#) [RSE112062-S](#)