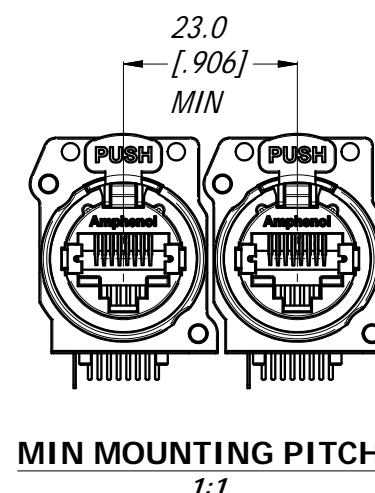
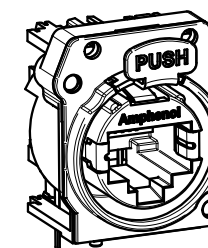
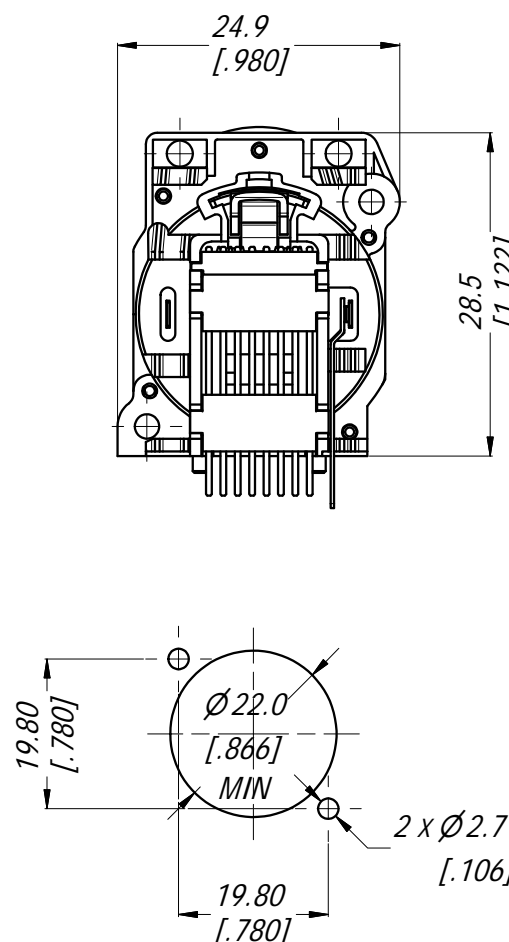


TABLE OF PART NUMBERS

PART No.	FRONT SHELL MATERIAL
RJX8FA5H	PLASTIC BLACK A TYPE
RJX8FB5H	METAL NICKEL PLATED B TYPE

MIN MOUNTING PITCH
1:13D VIEW
1:1PANEL CUT OUT
1:1
(CONNECTOR FRONT VIEW)

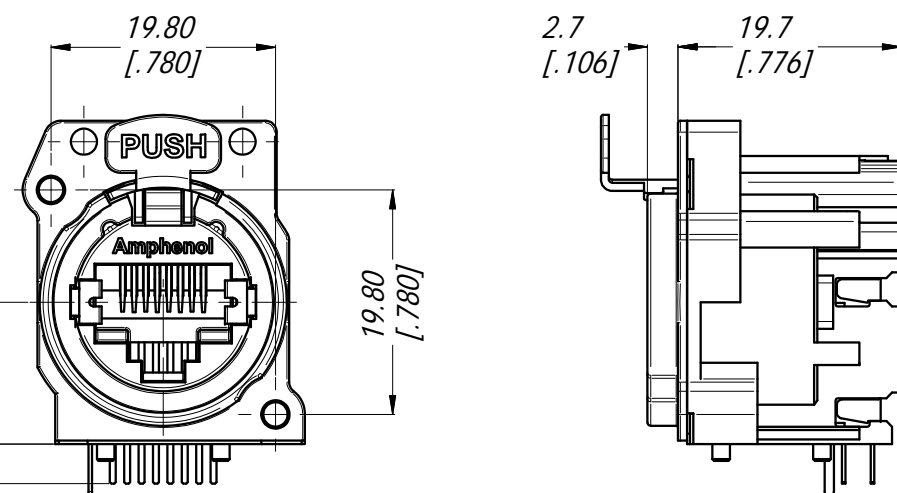
SPECIFICATIONS:

1. MATERIALS:

- PLASTIC INSERT & HOUSING: HIGH TEMPERATURE THERMOPLASTIC FLAMMABILITY RATING UL94V-0 DSM STANYL, 30% BLACK
- FRONT SHELL: METAL: ZINC ALLOY ZAMAK 3, NICKEL PLATE (B TYPE) OR PLACTIC (A TYPE).
- CONTACTS: PHOSPHORE BRONZE, 1.27 μ m GOLD PLATE ON MATING SURFACES, 1.27 μ m NICKEL MIN UNDERPLATE. 3.81 μ m MIN MATTE TIN ON CONTACT TAILS.
- LATCH LOCK AND SPRING: SPRING STEEL, NICKEL PLATE.

2. ELECTRICAL CHARACTERISTICS:

- RATED VOLTAGE: 125 VAC
- TYPICAL CONTACT RESISTANCE: 20 mOhm
- INSULATION RESISTANCE: >500 MOhm
- DIELECTRIC STRENGTH: 1000 VAC, 60 SECONDS
- TRANSMISSION SPECIFICATION/CLASS: COMPLIES WITH CAT5e 1000 BASE-T PER EIA-568-C.2
- PoE+ COMPLIES WITH 802.3at Type 2 (SEE PSE PINOUT ALTERNATIVE TABLE)

PCB LAYOUT
2:1
(CONNECTOR TOP VIEW)

PSE PINOUT ALTERNATIVES

CONDUCTOR	Alternative-A (MDI-X)	Alternative-A (MDI)	Alternative-A (All)
1	Negative V _{PSE}	Positive V _{PSE}	
2	Negative V _{PSE}	Positive V _{PSE}	
3	Positive V _{PSE}	Negative V _{PSE}	
4			Positive V _{PSE}
5			Positive V _{PSE}
6	Positive V _{PSE}	Negative V _{PSE}	
7			Negative V _{PSE}
8			Negative V _{PSE}

UNLESS OTHERWISE SPECIFIED TOLERANCE TO BE		THIS DOCUMENT IS THE PROPERTY OF AMPHENOL AUSTRALIA PTY. LTD. NO PART THEREOF MAY BE REPRODUCED AND USED WITHOUT THE PRIOR WRITTEN CONSENT OF THE OWNER.			Amphenol Amphenol Australia Pty.Ltd, 20 Industry Blvd, Carrum Downs VIC 3201 Australia		
LINEAR		ANGULAR		MATERIAL: REFER SPECIFICATION		TITLE: XLRnet CONNECTOR RJ45 RECP CAT5e NON-LED & EMI SHIELD	
X ± 0.5		X' ± 1		DRN: T.N		DATE: 08/10/12	
X.X ± 0.1		X.X' ± 30'		CKD: P.M		DATE: 08/10/12	
X.X ± 0.05		X.X' ± 15'		APP'D: P.M		DATE: 08/10/12	
BREAK ALL SHARP EDGES AND REMOVE ALL BURRS		DO NOT SCALE		FINISH:		SCALE: 3:2	
DIMENSIONS IN MILLIMETRES		THIRD ANGLE PROJECTION		SIZE: A3		PART No: REFER TO TABLE OF PART NUMBERS 55010837-000	
						REV 1	
						SHEET 1/1	

Mouser Electronics

Authorized Distributor

Click to View Pricing, Inventory, Delivery & Lifecycle Information:

Amphenol:

[RJX8FB5VEB](#) [RJX8FB5VRYEB](#) [RJX8FB5VRRB](#) [RJX8FD5I](#) [RJX8FD5VB](#) [RJX8FB5VRYB](#) [RJX8FB5VGYB](#)
[RJX8FD3HB](#) [RJX8FB5VRGEB](#) [RJX8FD5110](#) [RJX8FB5VRGB](#) [RJX8FB5VRREB](#) [RJX8FD5T](#) [RJX8FB3VB](#)
[RJX8FB5VGYEB](#) [RJX8FD3VB](#) [RJX8FA5VB](#) [RJX8FA3VB](#) [RJX8FB5VB](#) [RJX8FD5HB](#) [RJX8FB5VUUEB](#)
[RJX8FB5VGREB](#) [RJX8FB5VUUB](#) [RJX8FB5VGRB](#) [RJX8FA5HB](#)