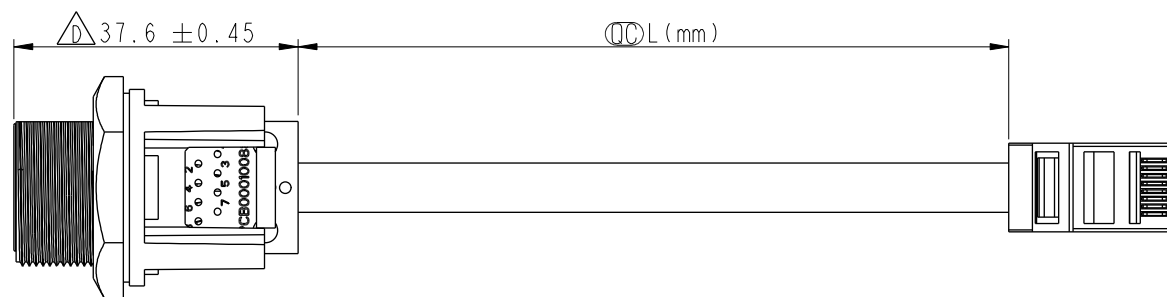
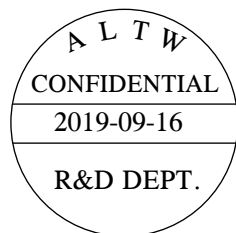
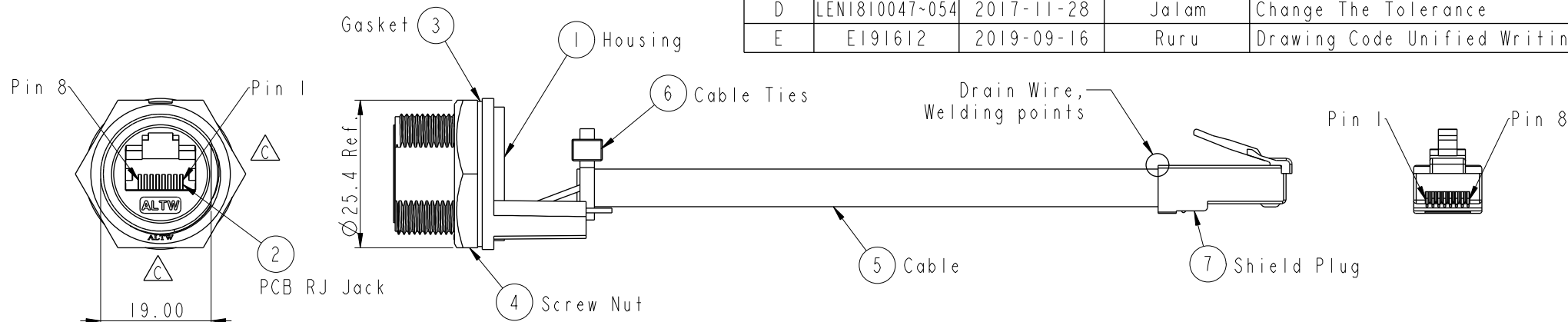


| REV. | ECN NO.        | DATE       | SIGN   | DESCRIPTION                  |
|------|----------------|------------|--------|------------------------------|
| C    | LEN1440110     | 2014-04-10 | Tom_gu | Change H Cut To D Cut        |
| D    | LEN1810047~054 | 2017-11-28 | Jalam  | Change The Tolerance         |
| E    | E191612        | 2019-09-16 | Ruru   | Drawing Code Unified Writing |



| Cable length | Tolerance |
|--------------|-----------|
| 0.0~100 mm   | ±10 mm    |
| 101~300 mm   | ±15 mm    |
| 301~1000 mm  | ±20 mm    |

Note:

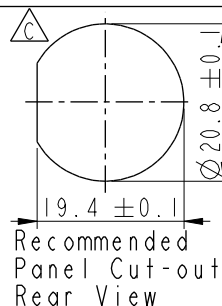
- \*  $\varnothing$  Important Dimension
- \* Waterproof Rate : IP67 Unmated
- \* Housing : Nylon+GF,UL 94V-0,BLACK
- \* Screw Nut : Nylon+GF,BLACK
- \* Gasket : Silicone,UL 94V-0,Gray.
- \* PCB: FR-4
- \* Jack : PBT Polyester UL 94V-0
- \* Use without Waterproof cap or Dust cap  
For Panel Thickness Max: 4.2mm
- \* Use with Waterproof cap or Dust cap  
For Panel Thickness Max: 3.0mm
- \* Screw torsion value range: 8~12kgf-cm

RCP-5SPFFP-SCU7BXX

10: 100mm  
15: 150mm  
20: 200mm  
A0: 1000mm

Cable Pitch Unit=50mm  
Cable Length(L):100~1000mm

| Shield  | Drain Wire   | 接地線  | Shield |
|---------|--------------|------|--------|
| 8       | Brown        | 棕    | 8      |
| 7       | White/Brown  | 白/棕  | 7      |
| 6       | Green        | 綠    | 6      |
| 5       | White/Blue   | 白/藍  | 5      |
| 4       | Blue         | 藍    | 4      |
| 3       | White/Green  | 白/綠  | 3      |
| 2       | Orange       | 橘    | 2      |
| 1       | White/Orange | 白/橘  | 1      |
| Jack    | Wire Color   | Plug |        |
| Pin Out |              |      |        |



|            |  |                                |
|------------|--|--------------------------------|
| UNIT:mm    |  | TITLE                          |
| TOLERANCE  |  | RJ45,C SIZE,UNMATED WATERPROOF |
| .X ±0.25   |  | SCALE 1:1                      |
| .XX ±0.1   |  | SIZE A4                        |
| .XXX ±0.05 |  | SHEET 1 OF 1                   |
| ANGLES ±1° |  | REV. E                         |
|            |  | WC-REV. B.5                    |
|            |  | QC: Inspection item            |

**Amphenol LTW**  
安費諾亮泰企業股份有限公司

|                    |             |            |
|--------------------|-------------|------------|
| ITEM NO            | DRAWN BY    | DATE       |
| DWG NO             | Ruru        | 2019-09-16 |
| RCP-5SPFFP-SCU7BXX | CHECKED BY  | DATE       |
| CUSTOMER           | Rita        | 2019-09-16 |
| ALTW               | APPROVED BY | DATE       |
|                    | Max         | 2019-09-16 |

# Mouser Electronics

Authorized Distributor

Click to View Pricing, Inventory, Delivery & Lifecycle Information:

[Amphenol:](#)

[RCP-5SPFFP-SCU7B50](#)