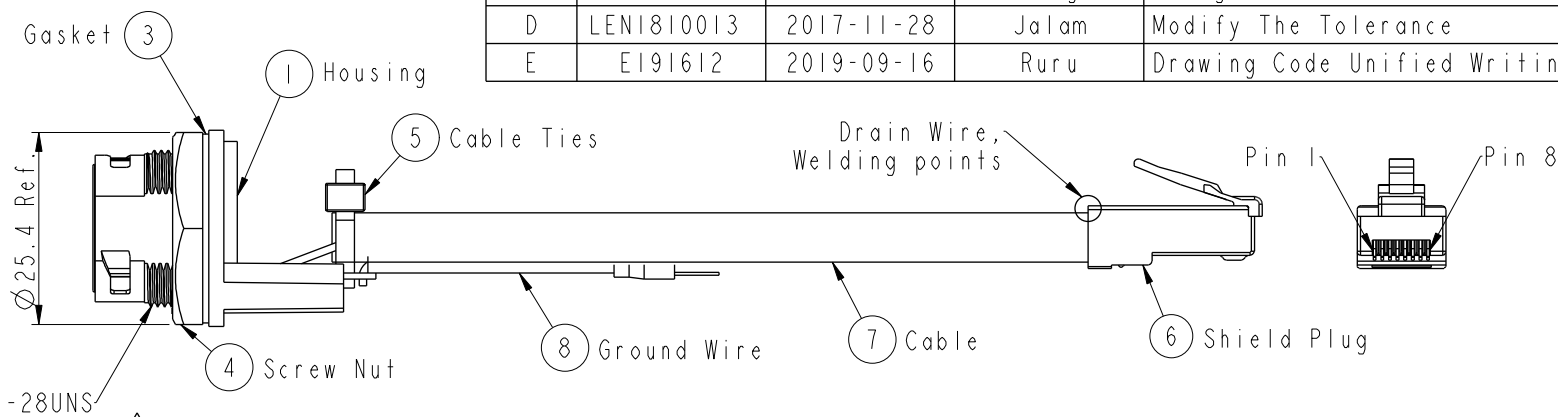
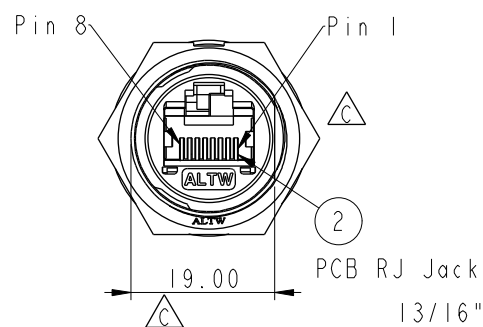


REV.	ECN NO.	DATE	SIGN	DESCRIPTION
C	LEN1440184	2014-04-19	Tom_gu	Change D Cut
D	LEN1810013	2017-11-28	Jalam	Modify The Tolerance
E	E191612	2019-09-16	Ruru	Drawing Code Unified Writing



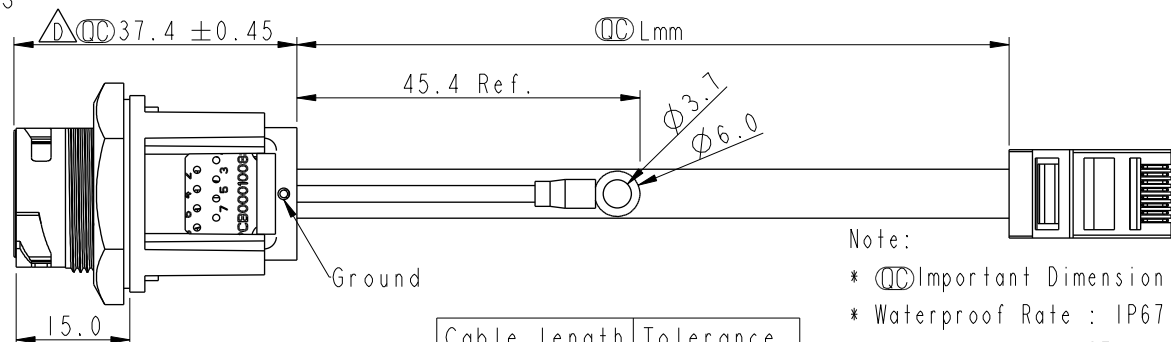
RCP-5SPFFG-TCM7BXX

10: 100mm  
15: 150mm  
20: 200mm

A0: 1000mm

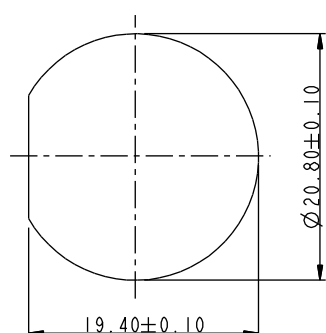
Cable Pitch Unit=50mm

Cable Length(L):100~1000mm



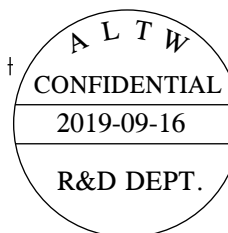
Note:

- \*  $\varnothing$  Important Dimension
- \* Waterproof Rate : IP67 Mated
- \* Housing : Nylon+GF, UL 94V-0, BLACK
- \* Screw Nut : Nylon+GF, UL 94V-0, BLACK
- \* Gasket : Silicone, UL 94V-0, Gray.
- \* PCB: FR-4
- \* Cable: CAT5E FTP 24#\*4P+D+AL/MY, 6.5
- \* Ground Wire: UL1015
- \* Jack : PBT Polyester UL 94V-0
- \* Ground Terminal: Brass, Tin Plated, Thickness: 0.4mm
- \* Use without Waterproof cap or Dust cap  
For Panel Thickness Max: 3.0mm
- \* Use with Waterproof cap or Dust cap  
For Panel Thickness Max: 1.8mm
- \* Screw torsion value range: 8~12kgf-cm

Recommended Panel Cut-out  
Rear View

Ground	Wire (20AWG)	Green	Terminal
Shield	Drain Wire	接地線	Shield
8	Brown	棕	8
7	White/Brown	白/棕	7
6	Green	綠	6
5	White/Blue	白/藍	5
4	Blue	藍	4
3	White/Green	白/綠	3
2	Orange	橘	2
1	White/Orange	白/橘	1
Jack	Wire Color	Plug	
	Pin Out		

Twist  
Twist  
Twist



UNIT: mm	
TOLERANCE	
.X	±0.25
.XX	±0.1
.XXX	±0.05
ANGLES	±1°

TITLE	RJ45, C SIZE, MATED WATERPROOF ADD GROUND WIRE		
SCALE	1:1	SIZE	A4
REV.	E	WC-REV.	B.5
			$\varnothing$ Inspection item

Amphenol LTW  
安費諾亮泰企業股份有限公司

ITEM NO.	DRAWN BY	DATE
DWG. NO.	Ruru	2019-09-16
CUSTOMER	CHECKED BY	DATE
ALTW	Rita	2019-09-16
	APPROVED BY	DATE
	Max	2019-09-16

# Mouser Electronics

Authorized Distributor

Click to View Pricing, Inventory, Delivery & Lifecycle Information:

[Amphenol:](#)

[RCP-5SPFFG-TCM7B40](#)