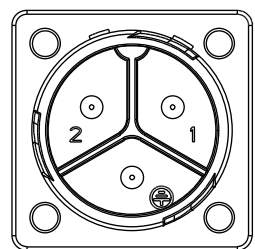
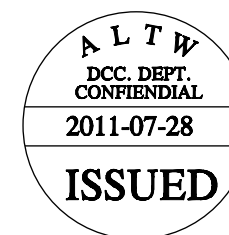
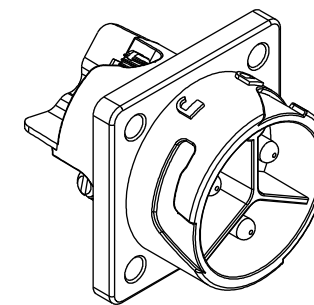
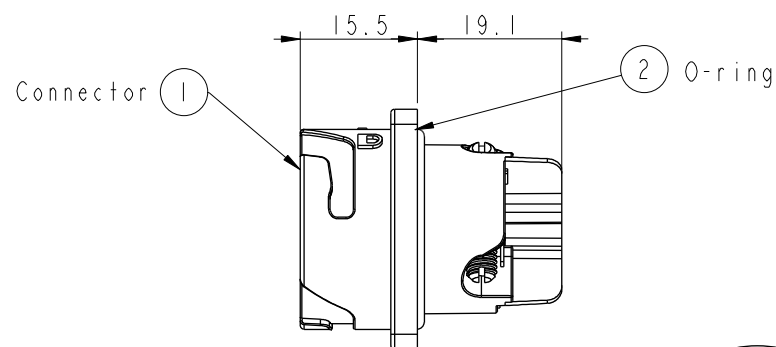
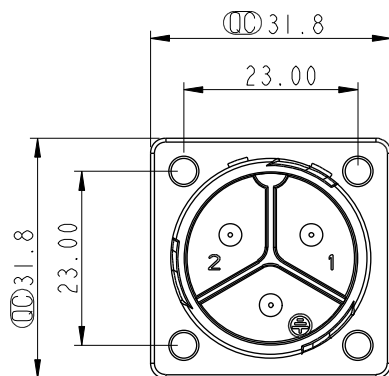
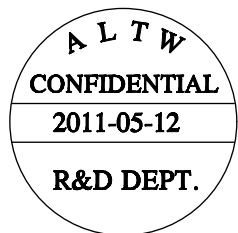
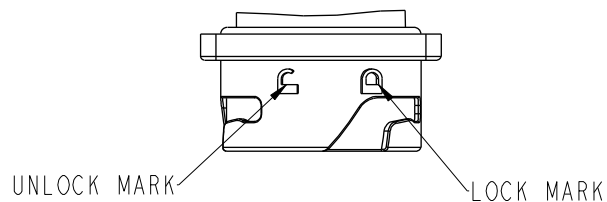
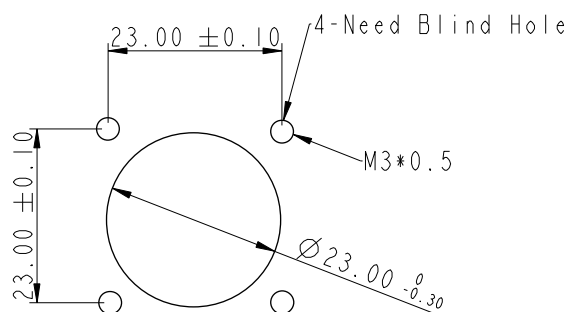


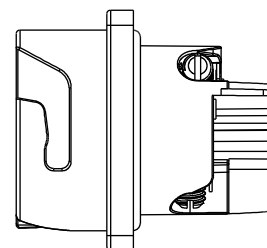
REV.	ECN NO.	DATE	SIGN	DESCRIPTION
A		2011-05-12	Doreen	SAM-PWR-PI012 TO NEW ITEM



Conn.
Pin Assignments
Front View



Recommended
Panel Cut-Out



- Note:
- * (QC)important Dimension To Check.
 - * Waterproof Rate : IP67
 - * Connector: PPE , Black
 - * Male Pin: Copper Alloy,Tin Plated
 - * O-Ring: Silicone , Gary
 - * Current Rating: 30A(Max.)
 - * Rated Voltage:300V
 - * Recommended Gauge: 8awg~14awg
 - * For Panel Thickness Max:4mm

UNIT:mm		TITLE		ITEM NO		DRAWN BY		DATE	
		POWER CONNECTOR FOR PANEL TYPE		PWL-03PMMB-TS7001		Doreen		2011-05-12	
TOLERANCE		SCALE		DWG NO		CHECKED BY		DATE	
.X ±0.25		1:1		PWL-03PMMB-TS7001		Winnie		2011-05-12	
.XX ±0.1		SIZE		CUSTOMER		APPROVED BY		DATE	
.XXX ±0.05		A4		ALTW		Kevin		2011-05-12	
ANGLES ±1°		REV.							
		A							
		WC-REV.							
		A.2							
		QC: Inspection item							

Amphenol LTW
安費諾亮泰企業股份有限公司

Mouser Electronics

Authorized Distributor

Click to View Pricing, Inventory, Delivery & Lifecycle Information:

[Amphenol:](#)

[PWL-03PMMB-TS7001](#)