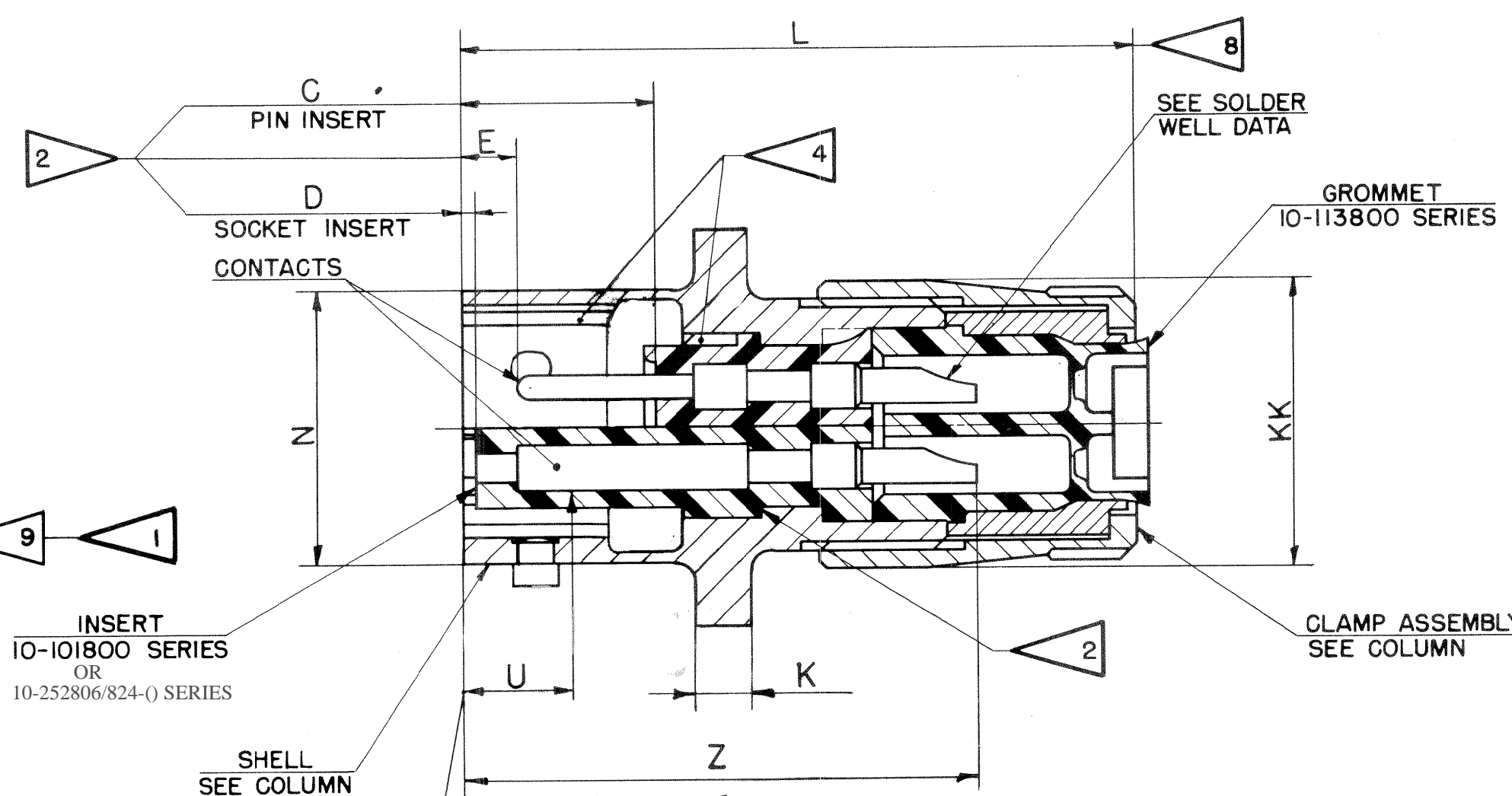
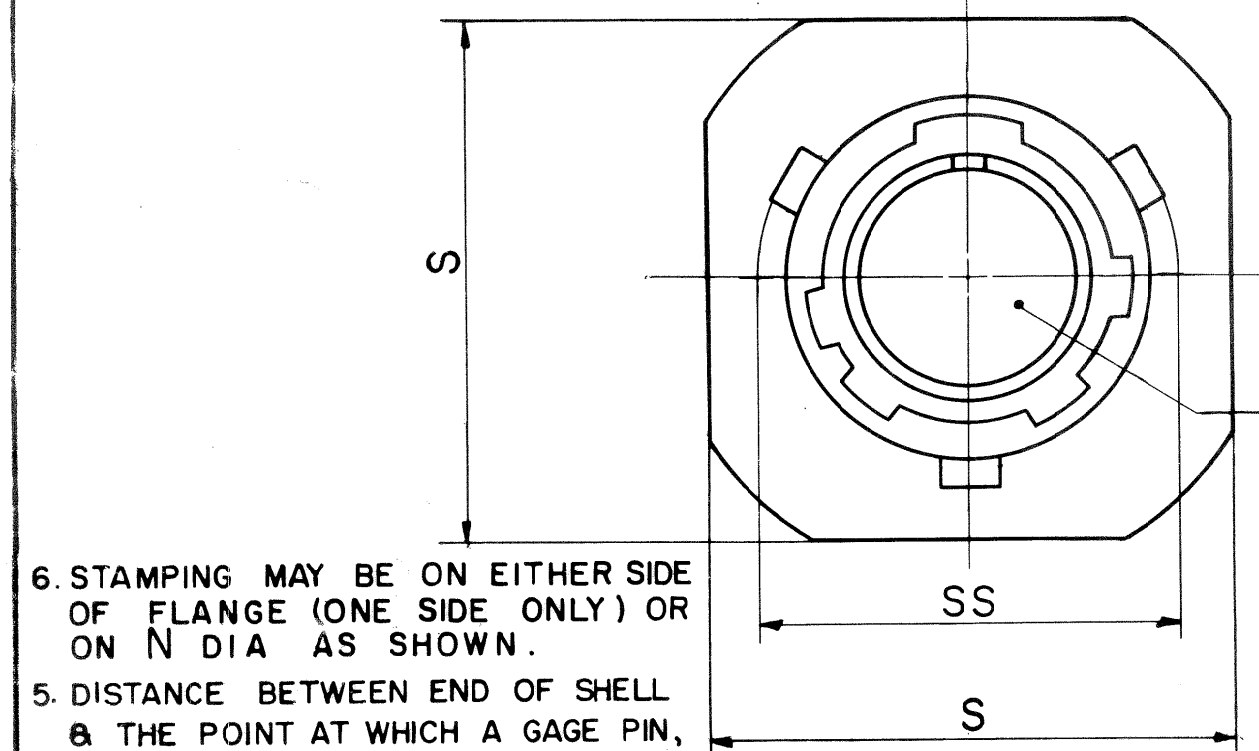
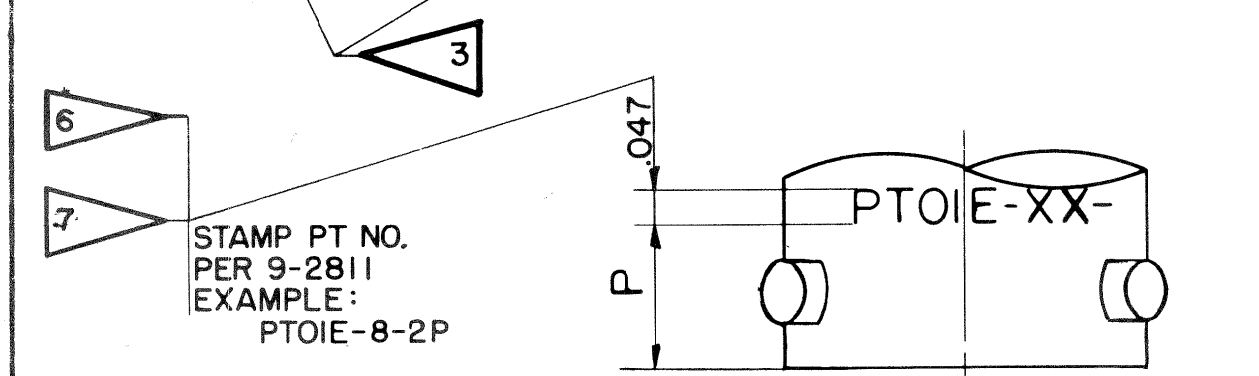


ASSEMBLY NUMBER	PT NUMBER	DETAILS		DIMENSIONS											
		SHELL	CLAMP ASSEMBLY	C +.010 -.025	D +.010 -.025	E +.010 -.020	L +.035 -.015	N DIA +.001 -.005	P	Z ±.030	KK DIA MAX	SS DIA +.000 -.016	K	S ±.016	U MAX
71-148106 -	OIE - 6 -	10-150901-63	10-117930-63	.337	.025	.085	1.165	.348	.188	.887	.420	.439	.094	.688	.153
71-148108 -	- 8 -	- 83	- 83					.473			.540	.563		.812	
71-148110 -	- 10 -	- 103	- 103					.590			.665	.680		.938	
71-148112 -	- 12 -	- 123	- 123					.750			.793	.859		1.031	
71-148114 -	- 14 -	- 143	- 143					.875			.910	.983		1.125	
71-148116 -	- 16 -	- 163	- 163					1.000			1.037	1.108		1.219	
71-148118 -	- 18 -	- 183	- 183					1.125			1.155	1.233		1.312	
71-148120 -	- 20 -	- 203	- 203	.399	.087	.147	1.415	1.250	.344	1.105	1.281	1.358	.115	1.438	.215
71-148122 -	- 22 -	- 223	- 223	.399	.087	.147	1.415	1.375	.344	1.105	1.408	1.483	.115	1.562	
71-148124 -	- 24 -	- 243	- 243	.399	.087	.147	1.477	1.500	.344	1.105	1.535	1.614	.115	1.688	
71-148125/50		NOT AVAILABLE													

REL	WAS	DATE	D'MAN	APPD.
32508-147		4-22-57	I. NILES	
1	CNR	ADD: COL S & K; REV COL P; CHG PICT.		
2	34105-13	N+000-005 DIA	5-27-58	MOORE
3	33524-605	ADD & REL SIZE 24 & DATA	7-29-58	MOORE
4	35525-250	REV KK DIA COL; SSDIA COL SCOL; STANDARDIZED	10-29-58	MORIZIO
5	36162-14	TEST 9-3353-2 (PRO SPEC)	1-28-60	Sanhauer
A1	51430-1	(MFG); REM NOTE 12	4-30-70	Chardall
B	A0756	(CL II) ADDED 10-252806/824-0	12-19-06	VJ

ACCESSORIES
(NOT PART OF STANDARD ASSY)
SEE DRAWING
10-150000



71-148106 THRU
71-148150

- FOR CONTACT ARRANGEMENTS, SEE DRAWINGS L-15206-() THRU L-152050-()
- DIMENSIONS MUST BE MAINTAINED WHEN INSERTS ARE PRESSED FIRMLY AGAINST INDICATED SHOULDER.
- TO COMPLETE ASSY NO. & PT NO., ADD APPLICABLE INSERT ARRANGEMENT SUFFIX TO BASE NUMBERS LISTED ABOVE PER 9-2437-1.
- VERTICAL CENTERLINES OF INSERT ARRANGEMENT & THE MAIN SHELL POLARIZING KEYWAY TO BE WITHIN .005 OF INDICATED ROTATION PER 9-2437-1.
- DISTANCE BETWEEN END OF SHELL & THE POINT AT WHICH A GAGE PIN, HAVING THE SAME BASIC DIAMETER AS THE MATING CONTACT & A SQUARE FACE, ENGAGES SOCKET CONTACT SPRING.
- STAMPING MAY BE ON EITHER SIDE OF FLANGE (ONE SIDE ONLY) OR ON N DIA AS SHOWN.

- SEE WORK ORDER FOR PERMISSIBLE ADDITIONAL OR ALTERNATE STAMPING.
- ALL UNUSED GROMMET HOLES TO BE FILLED WITH GROMMET SEALING ROD OR GROMMET SEALING PLUGS. SEE DRAWING 10-150000 (# 27 OR # 28).
- FOR COMPONENT PART NUMBERS OF DESIRED ARRANGEMENT, SEE APPLICABLE PARTS LIST.
- SEE DRAWING 71-148606 THRU 71-148650 & OTHERS FOR REQUIRED MATING PLUG ASSEMBLY.
- INSERTS & CONTACTS MUST NOT BE REMOVED.
- DIMENSION INDICATES FINAL INSTALLATION. FOR STORAGE & SHIPPING, SHELL & CLAMP ASSEMBLY MUST BE LOOSELY COUPLED.

SOLDER WELL DATA			
CONTACT SIZE	20	16	
WELL DIA	.046 ⁺⁰⁰⁴ ₋₀₀₀	.078 ⁺⁰⁰⁴ ₋₀₀₂	
WELL DEPTH	.125	.188	

MATERIAL SPEC.	PROCESS SPEC. TEST 9-3980-2 ASSY 9-3443-2 9-2437-1 9-2811	SCINTILLA MAGNETO DIVISION BENDIX AVIATION CORPORATION SIDNEY, N. Y., U.S.A.		TOLERANCES UNLESS OTHERWISE SPECIFIED DECIMALS ±.010	
HEAT TREAT SPEC.	FINISH SPEC.	NAME CONNECTOR, ELECTRICAL PLUG, TYPE PTE () FL, OLIVE DRAB		NEXT ASSEMBLY	
TOOL ACC.	COM. REQ.	D'MAN	CHECKER	MAT. P.	STDS
		PESSAGNO	KOVARICK		
		1-9-57	2-25-57		
				APPROVED	SCALE
					NONE
					REF

71-148106 THRU
71-148150

DWG SIZE C CODE 77820 75-3

Mouser Electronics

Authorized Distributor

Click to View Pricing, Inventory, Delivery & Lifecycle Information:

Amphenol:

[PT01E-22-21P](#) [PT01E-22-21S](#) [PT01E-22-55P](#) [PT01E-22-55S](#) [PT01E-22-34S](#) [PT01E-22-34P](#) [PT01E-16-8P](#)
[PT01E-16-8S](#) [PT01E-18-32P](#) [PT01E-16-26S](#) [PT01E-16-26P](#) [PT01E-18-11P](#) [PT01E-18-11S](#) [PT01E-10-6S](#) [PT01E-10-6P](#) [PT01E-10-5S](#) [PT01E-10-5P](#) [PT01E-12-4S-SR](#) [PT01E-20-16P](#) [PT01E-20-27S](#) [PT01E-20-27P](#) [PT01E-20-24S](#)
[PT01E-20-24P](#) [PT01E0802P](#) [PT01E145S\(027\)](#) [PT01E145S\(476\)](#) [PT01E-20-41P](#) [PT01E-20-41S](#) [PT01E-14-5P](#)
[PT01E-14-5S](#) [PT01E-14-18P](#) [PT01E-14-18S](#) [PT01E-14-12S](#) [PT01E-14-12P](#) [PT01E-14-19P](#) [PT01E-14-19S](#) [PT01E-14-14-15S](#) [PT01E-14-15P](#) [PT01E-12-10P](#) [PT01E-12-10S](#) [PT01E-12-3P](#) [PT01E-12-3S](#) [PT01E-12-8S](#) [PT01E-12-8P](#)
[PT01E-12-4P](#) [PT01E-12-4S](#) [PT01E-24-61S](#) [PT01E-24-61P](#) [PT01E-8-4S](#) [PT01E-8-4P](#) [PT01E-8-2S](#) [PT01E-8-2P](#)
[PT01E-8-3S](#) [PT01E-8-3P](#) [PT01E-10-98S](#) [PT01E-10-98P](#) [PT01E-8-4P\(424\)](#) [PT01E-10-5P\(SR\)](#) [PT01E-10-5S\(SR\)](#)
[PT01E-10-6P\(025\)](#) [PT01E-10-6P\(027\)](#) [PT01E-10-6P\(470\)](#) [PT01E-10-6P\(476\)](#) [PT01E-10-6P\(SR\)](#) [PT01E-10-6S\(470\)](#)
[PT01E-10-6S\(476\)](#) [PT01E-10-6S\(SR\)](#) [PT01E-10-98P\(SR\)](#) [PT01E-10-98S\(SR\)](#) [PT01E-12-3P\(470\)](#) [PT01E-12-3P\(476\)](#) [PT01E-12-3P\(SR\)](#) [PT01E-12-3S\(SR\)](#) [PT01E-12-4P\(SR\)](#) [PT01E-12-8P\(SR\)](#) [PT01E-12-8S\(SR\)](#) [PT01E-14-12P\(SR\)](#) [PT01E-14-12S\(023\)](#) [PT01E-14-12S\(SR\)](#) [PT01E-14-15P\(SR\)](#) [PT01E-14-15S\(SR\)](#) [PT01E-14-18P\(SR\)](#)
[PT01E-14-18S\(SR\)](#) [PT01E-14-19P\(SR\)](#) [PT01E-14-19S\(SR\)](#) [PT01E-14-5P\(476\)](#) [PT01E-14-5P\(SR\)](#) [PT01E-14-5S\(SR\)](#)
[PT01E-16-23P](#) [PT01E-16-23P\(SR\)](#) [PT01E-16-23S](#) [PT01E-16-23S\(SR\)](#) [PT01E-16-26P\(SR\)](#) [PT01E-16-26S\(SR\)](#)
[PT01E-16-8P\(SR\)](#) [PT01E-16-8S\(SR\)](#) [PT01E-18-11P\(SR\)](#) [PT01E-18-11S\(SR\)](#) [PT01E-18-32P\(SR\)](#) [PT01E-18-32S\(SR\)](#)