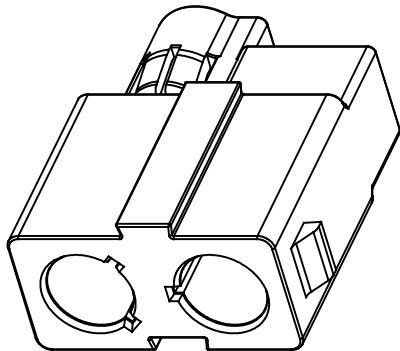
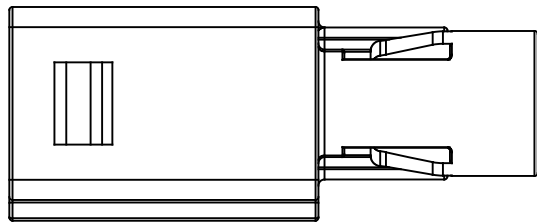
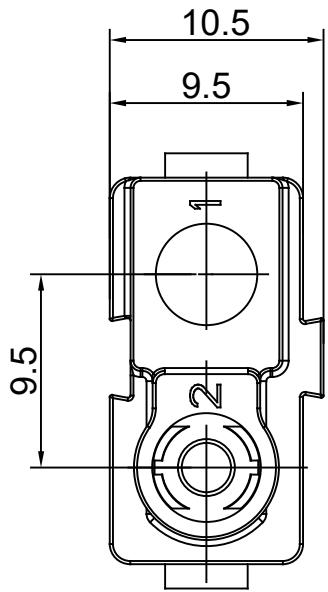
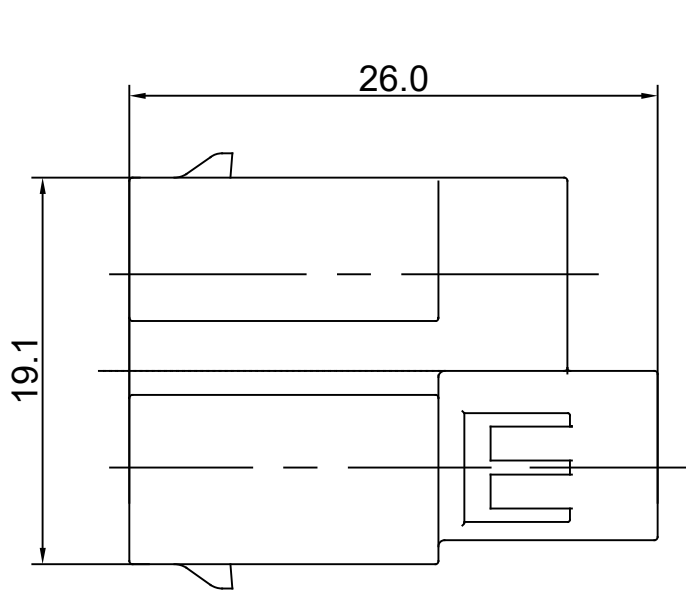


REVISIONS					
REV	ECO	DESCRIPTION	DATE	BY	APPR
A1	--	FIRST RELEASED	APR-10-2020	BLINK	TOMMY



NOTES: (UNLESS OTHERWISE SPECIFIED)

1. MATERIAL:
SHELL: THERMOPLASTIC, UL94 V-0.
2. SPECIFICATIONS:
2.1, OPERATING TEMPERATURE: -40~125°C.
2.2, RoHS COMPLIANT.
3. ALL DIMENSIONS ARE FOR REFERENCE USE ONLY.

QUANTITY	PART NUMBER	DESCRIPTION	ITEM
MATERIALS LIST			
<div>UNLESS OTHERWISE SPECIFIED</div> <div>1) All dimensions are in metric(mm).</div> <div>2) Tolerances are as follows:</div> <div>1 PL DEC ±0.30</div> <div>2 PL DEC ±0.15</div> <div>3 PL DEC ±0.08</div> <div>Fractions ±1/64</div> <div>Angles ±1°</div> <div>3) Note reference = </div> <div>MATERIAL SPECIFICATIONS:</div> <div>PROCESS SPECIFICATIONS:</div> <div>NEXT ASSY:</div>		<div>SIGNATURES</div> <div>DATE</div> <div>DRAWN: BLINK</div> <div>APR-10-2020</div> <div>CHECKED: ORION</div> <div>APR-13-2020</div> <div>ENGINEER:</div> <div>APPROVAL: TOMMY</div> <div>APR-15-2020</div> <div>CUSTOMER:</div> <div>THIS DRAWING IS SUPPLIED FOR INFORMATION ONLY. DESIGN FEATURES, SPECIFICATIONS AND PERFORMANCE DATA SHOWN HEREON ARE THE PROPERTY OF THE AMPHENOL CORPORATION. NO RIGHTS OF REPRODUCTION ARE IMPLIED. ALL DIMENSIONS ARE SUBJECT TO NORMAL MANUFACTURING VARIATIONS.</div>	
		<div>Amphenol</div> <div>Sine Systems - www.amphenol-sine.com</div> <div>44724 Morley Drive</div> <div>Clinton Township, MI 48036</div>	
		<div>2.4MM, MALE RECPECTACLE HOUSING</div> <div>PRM SERIES™</div>	
		<div>SIZE</div> <div>B</div>	<div>TYPE</div> <div>C-</div>
		<div>DWG NO:</div> <div>PL000733</div>	<div>REVISION</div> <div>A1</div>
		<div>SCALE:</div> <div>NONE</div>	<div>SHEET</div> <div>1</div> <div>OF</div> <div>1</div>

Mouser Electronics

Authorized Distributor

Click to View Pricing, Inventory, Delivery & Lifecycle Information:

[Amphenol:](#)

[PL000733](#)