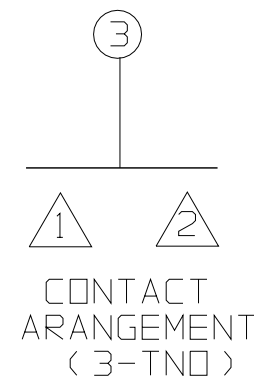
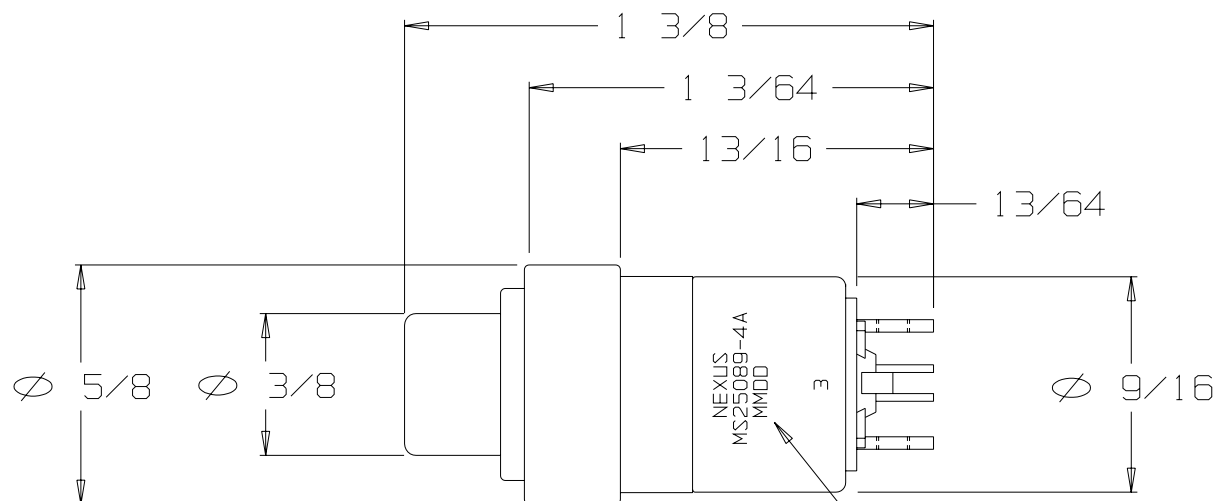


FOR REFERENCE ONLY

A NX304AB1B



"MMDD" IS THE DATE CODE

DUSTPROOF "SERIES 300" MOMENTARY SWITCH
CONTACTS 3-TNO - THREE TERMINAL NORMALLY OPEN
ADAPTER TYPE "A", COLOR BLACK
BUTTON #1, COLOR BLACK

THIS DOCUMENT CONTAINS PROPRIETARY INFORMATION OF NEXUS, INCORPORATED AND SUCH INFORMATION MAY NOT BE DISCLOSED TO OTHERS FOR ANY PURPOSE OR USED FOR ANY PURPOSE WITHOUT THE WRITTEN CONSENT OF NEXUS.

OWN. BY	EWT	DATE	3/1/06	MATERIAL	N/A
CHECKED BY		DATE		FINISH	N/A
APPR. BY		DATE		WEIGHT	SCALE 2:1
UNLESS OTHERWISE SPECIFIED DIMENSIONS ARE IN INCHES TOLERANCES ON .XX .XXX ANGLES ±.003 ±.5°				TITLE	
				SWITCH MOMENTARY	
				DO NOT SCALE DWG.	SHEET 1 OF 1
				NEXUS STAMFORD, CONN	
				SIZE	DWG. NO.
				A	NX304AB1B

A	INITIAL RELEASE		3/1/06	EWT
LET.	REVISION	CN #	DATE	CHK.

Mouser Electronics

Authorized Distributor

Click to View Pricing, Inventory, Delivery & Lifecycle Information:

[Amphenol:](#)

[NX304AB1B](#) [NX304AB1R](#) [NX304AB1G](#) [MS25089-4AR](#) [MS25089-4A](#) [NX304AB1B-01](#) [NX304AB1B-E](#)
[NX304AB1R-L](#) [NX304AB1R-01](#)