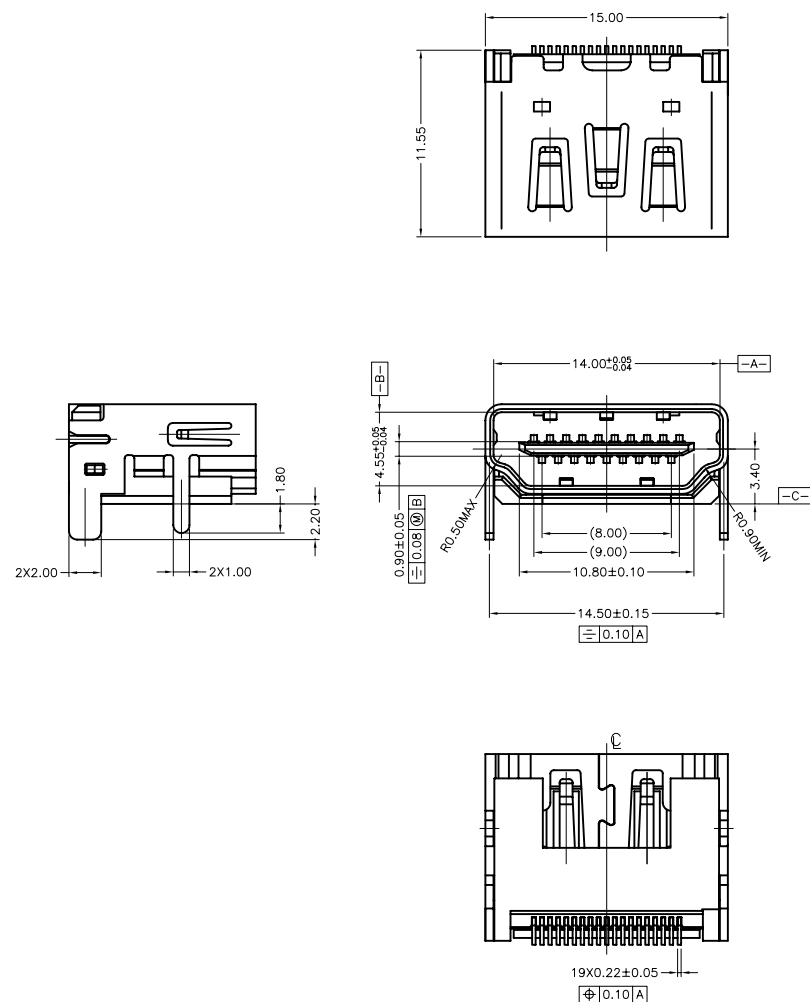


This document is the property of Amphenol Corporation and is delivered on the express condition that it is not to be disclosed, reproduced or used, in whole or in part, for manufacture or sale by anyone other than Amphenol Corporation without its prior consent, & that no right is granted to disclose or to use any information in this document.



# Customer Drawing

REVISIONS				
SYM	ECN	DESCRIPTION	DATE	APPROVED
1	HK5022	Release to customer	2/28/08	IP

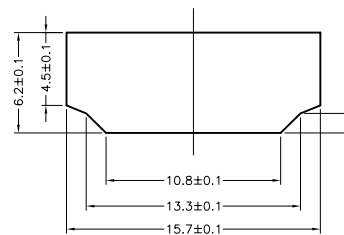
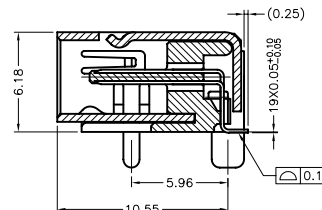
NOTES:

1. MATERIAL:  
HOUSING: HIGH TEMPERATURE PLASTIC UL94V-0, BLACK.  
CONTACT: PHOSPHOR BRONZE ,THICKNESS=0.20mm  
SHIELD: BRASS OR SPCC, THICKNESS=0.5mm
2. FINISH:  
CONTACT: REFER TO P/N SYSTEM ON MATING AREA  
1.27~2.54um NICKEL UNDERPLATE OVERALL  
2.54~5.08um PURE TIN ON SOLDER TAIL  
SHIELD: REFER TO P/N SYSTEM
3. ELECTRICAL SPECIFICATION:  
CURRENT RATING: 0.5A  
CONTACT RESISTANCE: 30mΩ MAX  
INSULATOR RESISTANCE: 100MΩ MIN(UNMATED) 10MΩ MIN(MATED)  
DIELECTRIC WITHSTANDING VOLTAGE: 500 V AC(UNMATED) 300 V AC(MATED)
4. ORDER P/N SYSTEM: HDM-F191-001-X-X-XX

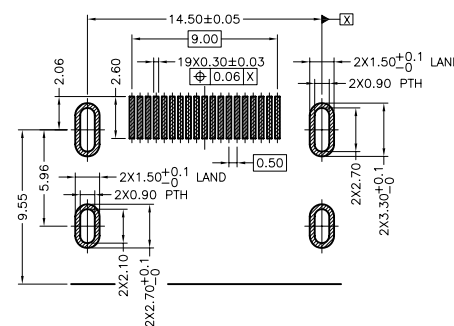
MATING AREA PLATING:  
1- 0.76um MIN Au.  
2- 0.38um MIN Au.  
A- Gold FLASH

PACKING METHOD:  
N/A- PACKING IN TRAY.  
TR- PACKING IN TAPE AND REEL.

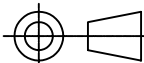
SHELL PLATING:  
1- GOLD FLASH PLATED.  
2- SOLDERABLE NICKEL PLATED.  
3- TIN PLATED.



RECOMMENDED PANEL CUT OUT DIMENSION



RECOMMENDED PCB LAYOUT (THK=1.6+/-0.15mm)

ITEM	PART	NO.	REQ'D	DESCRIPTION	
PARTS LIST					
UNLESS OTHERWISE SPECIFIED TOLERANCES U.S. METRIC  .X +/- ±0.50 .XX +/- ±0.25 .XXX +/- ±0.10 FRACTIONS +/- ANGLES +/-		APPROVAL DATE  DRAWN RAN.XIAO 2/28/08 CHECKED IP 2/28/08 CHECKED		Amphenol	
FOR MATERIALS AND FINISHES SEE NOTES		DRAWING FILE :  PE MASTER DRAWING HDM-CHDM-F191-001XXXX-1			TITLE  HDMI R/A SMT RECEPTACLE (WITHOUT FLANGE, SHELL DIP)
REMOVE SHARP EDGES  DIMENSIONS  U.S. INCHES— (METRIC) (MM)		ANGLE OF PROJECTION  			
		SIZE DRAWING NO. A3 C HDM-F191-001-X-X-XX		REV. 1	
		SCALE NONE		SHEET 1 OF 1	

# Mouser Electronics

Authorized Distributor

Click to View Pricing, Inventory, Delivery & Lifecycle Information:

[Amphenol:](#)

[HDMF19100112](#)