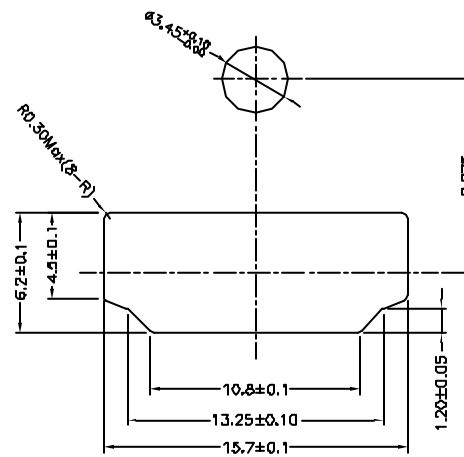
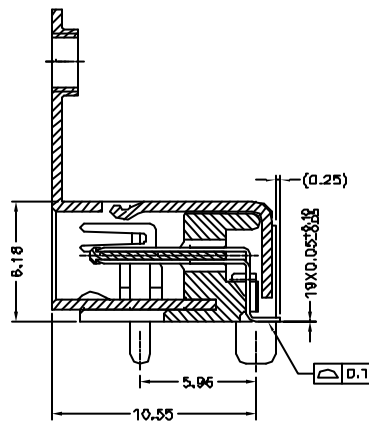
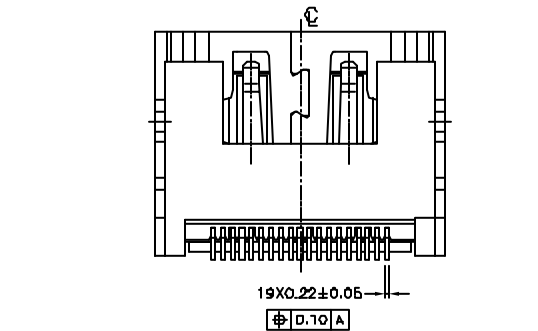


Technical drawing of a mechanical part, likely a bracket or support structure, showing dimensions: 2X2.00, 2X1.00, and 2.20.



NOTES:

1.MATERIAL:

HOUSING: HIGH TEMPERATURE PLASTIC UL94V-0, BLACK.

CONTACT: PHOSPHOR BRONZE ,THICKNESS=0.20mm

SHIELD: BRASS, THICKNESS=0.5mm

2.FINISH:

CONTACT: REFER TO P/N SYSTEM ON MATING AREA

1.27~2.54um NICKEL UNDERPLATE OVERALL

2.54~5.08um PURE TIN ON SOLDER TAIL

SHIELD: REFER TO P/N SYSTEM

3.ELECTRICAL SPECIFICATION:

CURRENT RATING: 0.5A

CONTACT RESISTANCE: 30mΩ MAX

INSULATOR RESISTANCE: 100MΩ MIN(UNMATED) 10MΩ MIN(MATED)

DIELECTRIC WITHSTANDING VOLTAGE: 500 V AC(UNMATED) 300 V AC(MATED)

4. ORDER P/N SYSTEM: HDM-F191-022-X-X-XX

MATING AREA PLATING

1- 0.78um MIN Au.

2- 0.38um MIN Au.

A- Gold FLASH

PACKING METHOD:

N/A- PACKING IN TRAY.

TR- PACKING IN TAPE AND REEL

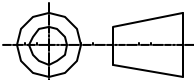
SHELL PLATING:

1- GOLD FLASH PLATED.

2- SOLDERABLE NICKEL PLATED.

3- TIN PLATED.

REVISIONS				
SYM	ECN	DESCRIPTION	DATE	APPROVED
1.3	HKXXXX	Initially release	8/29/07	IP

ITEM	PART	NO.	REQ'D	DESCRIPTION
PARTS LIST				
UNLESS OTHERWISE SPECIFIED TOLERANCES U.S. METRIC .X +/- ±0.50 .XX +/- ±0.25 .XXX +/- ±0.10 FRACTIONS +/- ANGLES +/- FOR MATERIALS AND FINISHES SEE NOTES REMOVE SHARP EDGES DIMENSIONS U.S. INCHES (METRIC) (MM)		APPROVAL		DATE
		DRAWN RAN.XIAO		8/28/07
		CHECKED IP		8/28/07
		CHECKED		
		DRAWING FILE : P:\MASTER\DRAWING\HDM\CHEN\H1102220001		
		TITLE HDMI R/A SMT RECEPTACLE (WITH FLANGE, SHELL DIP)		
		SIZE A3	DRAWING NO. G HDM-F191-022-X-X-XX	REV. 1.3
		SCALE NONE	SHEET 1 OF 1	
		ANGLE OF PROJECTION 		

Mouser Electronics

Authorized Distributor

Click to View Pricing, Inventory, Delivery & Lifecycle Information:

[Amphenol:](#)

[HDMF19102212](#)