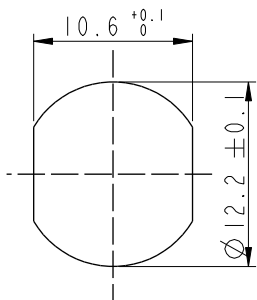


REV.	ECN NO.	DATE	SIGN	DESCRIPTION
B	C190510	2019-03-21	Su Nan	Add The Size Table
C	C200275	2020-03-13	Nan_Su	△C X1
D	C210309	2021-03-09	Ruru	△D X4

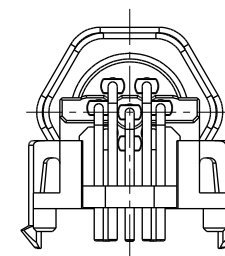
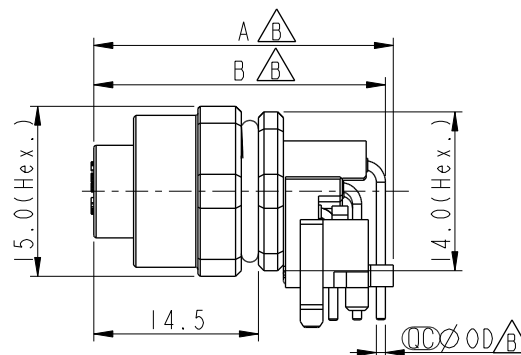
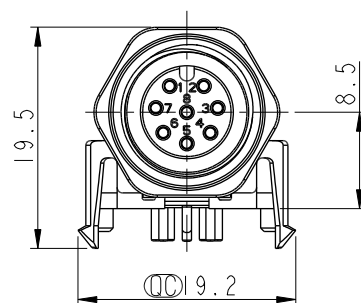
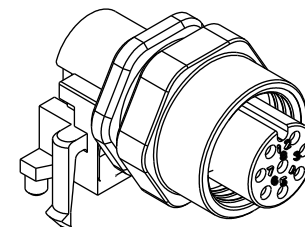
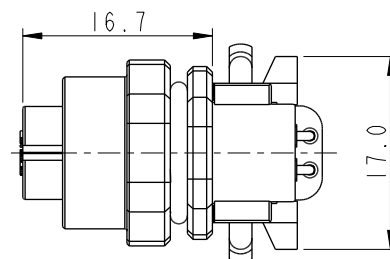


Recommended  
Panel Cut-Out



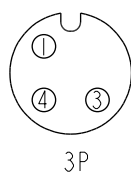
MSAS-XXPFFR-SF7003

XX: No. Of Pin

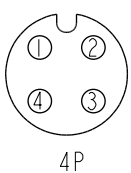


MSAS-03PFFR-SF7003	26.6	25.5	1.0
MSAS-04PFFR-SF7003	26.6	25.5	1.0
MSAS-05PFFR-SF7003	26.6	25.5	1.0
MSAS-08PFFR-SF7003	26.4	25.7	0.8

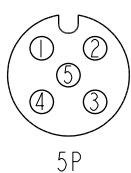
Item No.	A	B	OD
----------	---	---	----



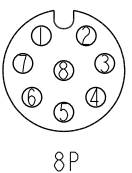
3P



4P

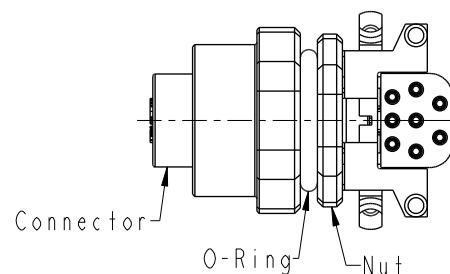


5P



8P

Pin Assignment Front View



Connector

O-Ring

Nut

△Note:

- \* RoHS Compliant
- \* ⌀ Important dimension
- \* Waterproof rate: IPX7, mated
- \* Connector
- Housing: Thermoplastic, Black
- Pin: Copper alloy, Gold plated
- O-Ring1: Rubber, Black
- O-Ring2: Rubber, Gray
- Nut: Metal
- \* Nut: Metal
- \* O-Ring: Rubber, Gray
- \* For panel thickness max: 3.0mm
- \* For pcb thickness max: 1.6mm
- \* O-Ring and nut are assembled on connectors

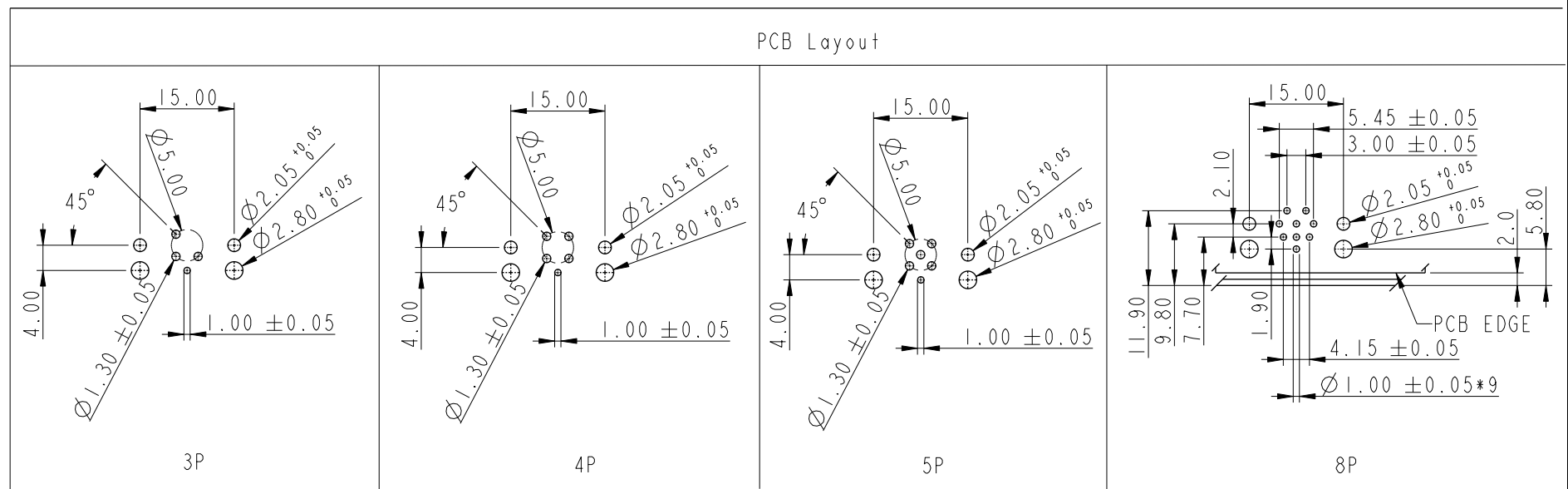
UNIT:mm		TITLE N SEN, M12 A -SHLD, SCREW RECEPTACLE, F, F, PCB R
TOLERANCE .X ±0.25 .XX ±0.1 .XXX ±0.05 ANGLES ±1°	SCALE 3:2 REV. D	SIZE A4 WC-REV. A.3
	SHEET 1 OF 2	QC: Inspection item

**Amphenol LTW**  
安費諾亮泰企業股份有限公司

ITEM NO.	DRAWN BY Su Nan	DATE 2019-03-21
DWG NO. MSAS-XXPFFR-SF7003	CHECKED BY Feng	DATE 2019-03-21
CUSTOMER ALTW	APPROVED BY Jerry	DATE 2019-03-21

THIS DOCUMENT IS SUBJECT TO CHANGE WITHOUT NOTICE. IT IS CONFIDENTIAL AND A PROPERTY OF Amphenol LTW. DISCLOSURE TO THIRD PARTY HAS TO BE AUTHORIZED BY Amphenol LTW.

PCB Layout



UNIT:mm		TITLE	
TOLERANCE		N SEN, M12 A -SHLD, SCREW	
.X	±0.25	RECEPTACLE, F, F, PCB R	
.XX	±0.1		
.XXX	±0.05		
ANGLES	±1°		
SCALE	3:2	SIZE	A4
REV.	D	WC-REV.	A.3
		SHEET	2 OF 2
		QC: Inspection item	

**Amphenol LTW**  
安費諾亮泰企業股份有限公司

ITEM NO	DRAWN BY	DATE
DWG NO	Su Nan	2019-03-21
CUSTOMER	CHECKED BY	DATE
ALTW	Feng	2019-03-21
	APPROVED BY	DATE
	Jerry	2019-03-21

# Mouser Electronics

Authorized Distributor

Click to View Pricing, Inventory, Delivery & Lifecycle Information:

[Amphenol:](#)

[MSAS-05PFFR-SF7003](#) [MSAS-08PFFR-SF7003](#)