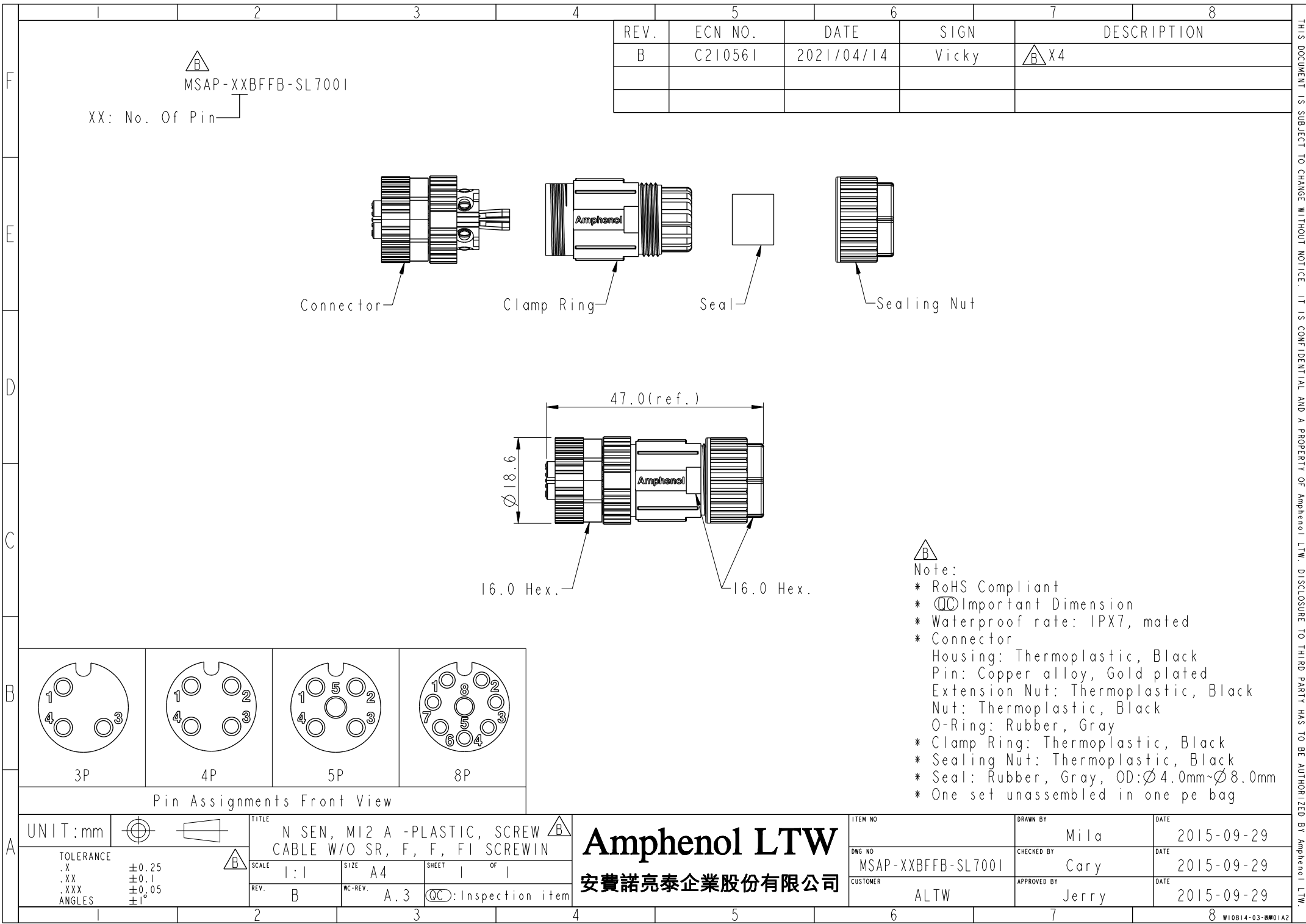
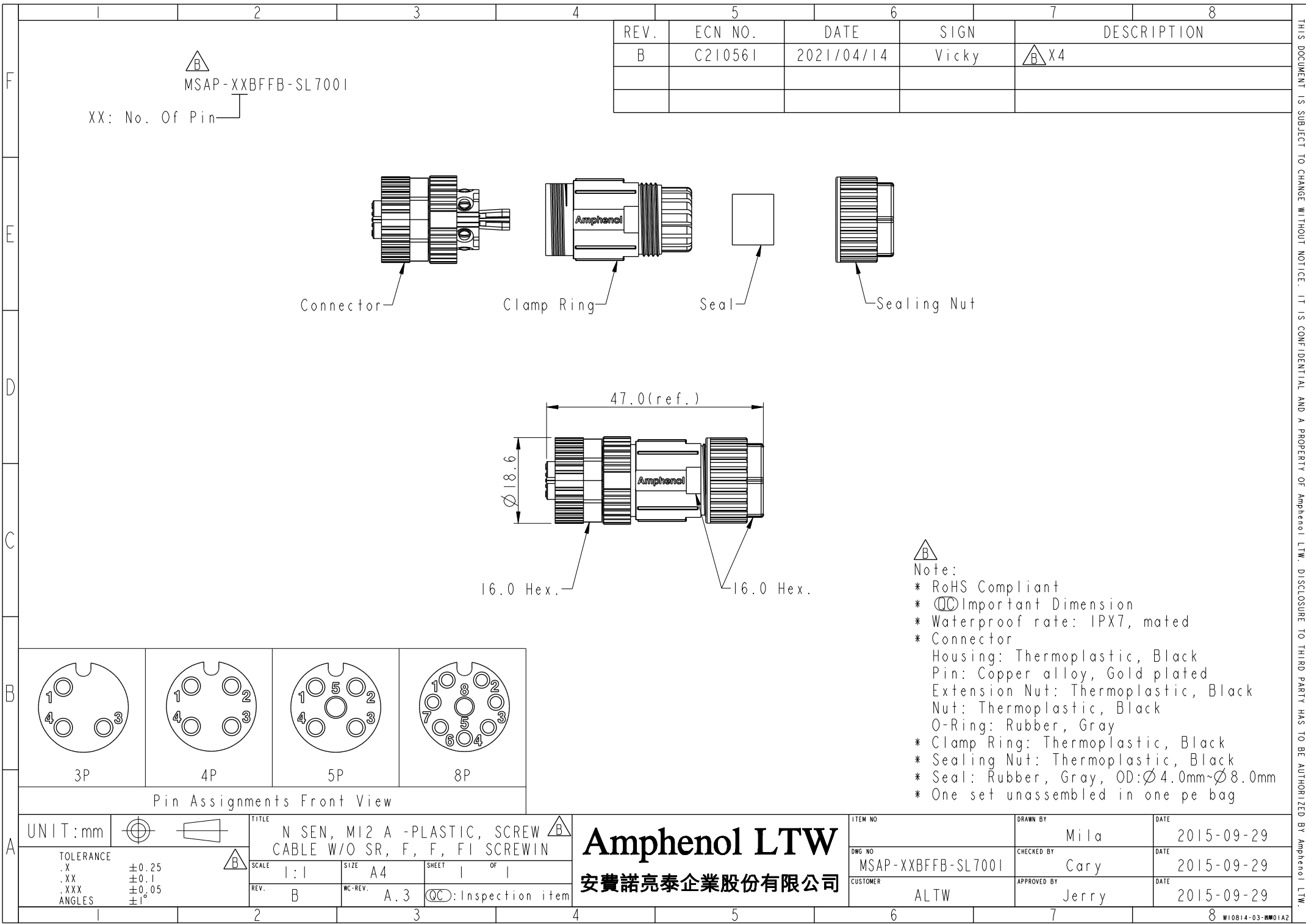


				REV.	ECN NO.	DATE	SIGN	DESCRIPTION	
				B	C2I056I	2021/04/14	Vicky	X4	

</

	I	2	3	4	5	6	7	8	THIS DOCUMENT IS SUBJECT TO CHANGE WITHOUT NOTICE. IT IS CONFIDENTIAL AND A PROPERTY OF Amphenol LTW. DISCLOSURE TO THIRD PARTY HAS TO BE AUTHORIZED BY Amphenol LTW.		
F					REV. B	ECN NO. C2I056I	DATE 2021/04/I4	SIGN Vicky		DESCRIPTION <div>B X4</div>	
E	MSAP-XXBFFB-SL700I <div>△ XX: No. Of Pin</div>										
D	<div>Connector</div> <div>Clamp Ring</div> <div>Seal</div> <div>Sealing Nut</div>										
C	<div>Amphenol</div> <div>47.0(ref.)</div> <div>Ø 18.6</div> <div>16.0 Hex.</div> <div>16.0 Hex.</div>										
B	<div>Pin Assignments Front View</div> <div>3P</div> <div>4P</div> <div>5P</div> <div>8P</div>				<div>Note:</div> <div>* RoHS Compliant</div> <div>* Important Dimension</div> <div>* Waterproof rate: IPX7, mated Connector Housing: Thermoplastic, Black Pin: Copper alloy, Gold plated Extension Nut: Thermoplastic, Black Nut: Thermoplastic, Black O-Ring: Rubber, Gray Clamp Ring: Thermoplastic, Black Sealing Nut: Thermoplastic, Black Seal: Rubber, Gray, OD: Ø4.0mm~Ø8.0mm One set unassembled in one pe bag</div>						
A	UNIT:mm	TOLERANCE .X ±0.25 .XX ±0.1 .XXX ±0.05 ANGLES ±1°	TITLE N SEN, M12 A -PLASTIC, SCREW CABLE W/O SR, F, F, FI SREWIN	SCALE 1 : 1	SIZE A4	SHEET 1	OF 1	ITEM NO		DRAWN BY Mila	DATE 2015-09-29
	Rev. B WC-REV. A.3 QC: Inspection item				DWG NO MSAP-XXBFFB-SL700I CUSTOMER ALTW		CHECKED BY Cary APPROVED BY Jerry			DATE 2015-09-29 DATE 2015-09-29	
Anmphenol LTw安費諾亮泰企業股份有限公司											
WI0814-03-BWDIAZ											

	I	2	3	4	5	6	7	8	
F					REV. B	ECN NO. C2I056I	DATE 2021/04/I4	SIGN Vicky	DESCRIPTION X4
E	MSAP-XXBFFB-SL700I XX: No. Of Pin								
D	 Connector Clamp Ring Seal Sealing Nut								
C									
B	 3P 4P 5P 8P Pin Assignments Front View				<div> Note: * RoHS Compliant * Important Dimension * Waterproof rate: IPX7, mated * Connector Housing: Thermoplastic, Black Pin: Copper alloy, Gold plated Extension Nut: Thermoplastic, Black Nut: Thermoplastic, Black O-Ring: Rubber, Gray * Clamp Ring: Thermoplastic, Black * Sealing Nut: Thermoplastic, Black * Seal: Rubber, Gray, OD:Ø4.0mm~Ø8.0mm * One set unassembled in one pe bag</div>				
A	<div>UNIT:mm TOLERANCE .X ±0.25 .XX ±0.I .XXX ±0.05 ANGLES ±I° </div> <div>TITLE N SEN, MI2 A -PLASTIC, SCREW CABLE W/O SR, F, F, FI SREWIN SCALE I:I SIZE A4 SHEET I OF I REV. B WC.REV. A.3 QC:Inspection item</div>				<div>Amphenol LTW 安費諾亮泰企業股份有限公司</div> <div>ITEM NO DWG NO MSAP-XXBFFB-SL700I CUSTOMER ALTW DRAWN BY Mila CHECKED BY Cary APPROVED BY Jerry DATE 2015-09-29 2015-09-29 2015-09-29</div>				
	I	2	3	4	5	6	7	8	
	WI0BI4-03-BM0IA2								

[illegible]

REV.	ECN NO.	DATE	SIGN	DESCRIPTION
B	C2I056I	2021/04/14	Vicky	X4

MSAP-XXBFFB-SL700I

XX: No. Of Pin

Connector Clamp Ring Seal Sealing Nut

Pin Assignments Front View

3P

4P

5P

8P

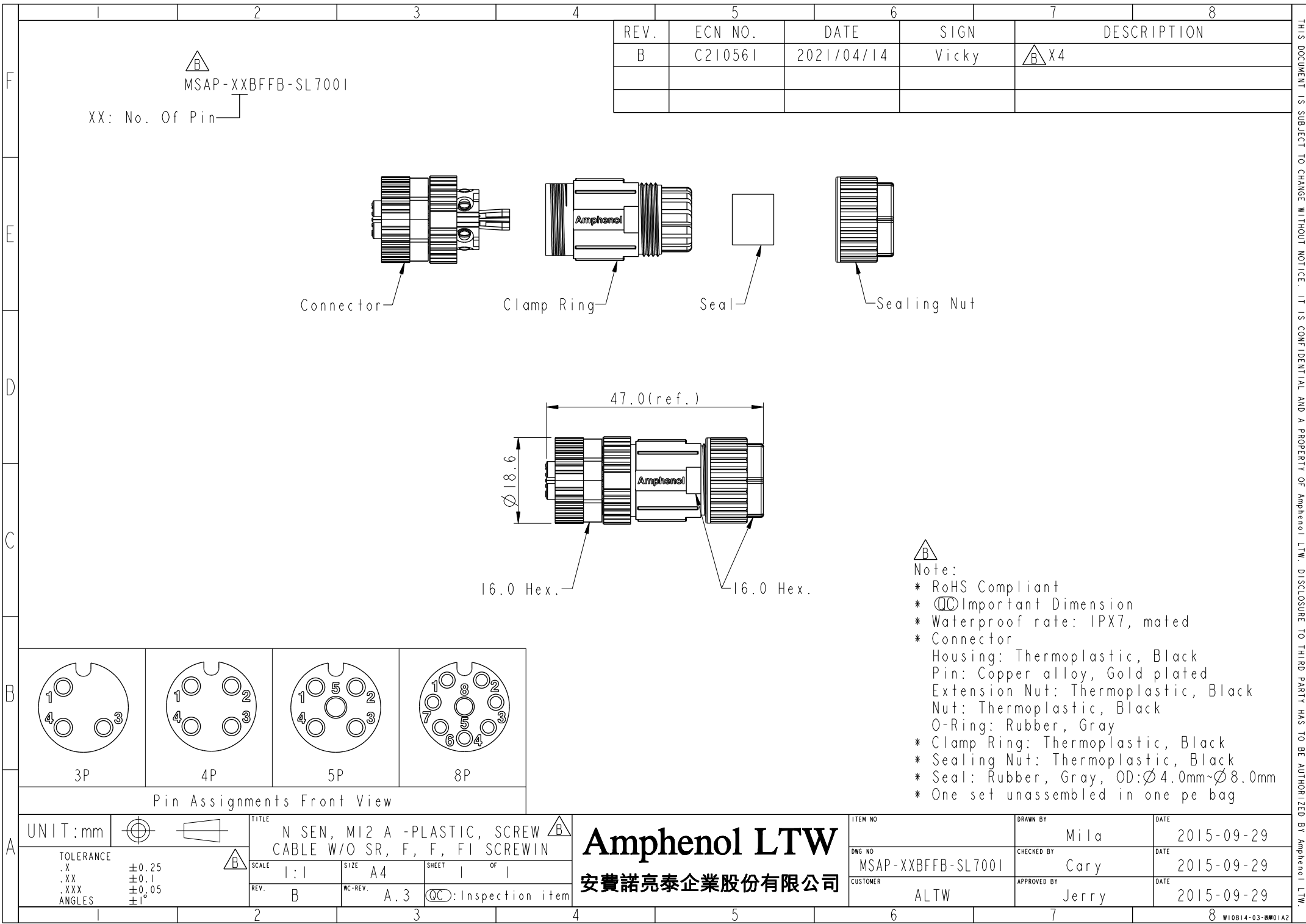
Note:

- * RoHS Compliant
- * Important Dimension
- * Waterproof rate: IPX7, mated
- * Connector Housing: Thermoplastic, Black
- * Pin: Copper alloy, Gold plated
- * Extension Nut: Thermoplastic, Black
- * Nut: Thermoplastic, Black
- * O-Ring: Rubber, Gray
- * Clamp Ring: Thermoplastic, Black
- * Sealing Nut: Thermoplastic, Black
- * Seal: Rubber, Gray, OD:Ø4.0mm~Ø8.0mm
- * One set unassembled in one pe bag

UNIT:mm		TITLE N SEN, M12 A -PLASTIC, SCREW CABLE W/O SR, F, F, FI SCREWIN	Amphenol LTW 安費諾亮泰企業股份有限公司	ITEM NO	DRAWN BY Mila	DATE 2015-09-29
TOLERANCE .X ±0.25 .XX ±0.1 .XXX ±0.05 ANGLES ±1°		SCALE 1:1	SIZE A4	SHEET 1 OF 1	CHECKED BY Cary	DATE 2015-09-29
REV. B	WC-REV. A.3	QC: Inspection item		CUSTOMER ALTW	APPROVED BY Jerry	DATE 2015-09-29

THIS DOCUMENT IS SUBJECT TO CHANGE WITHOUT NOTICE. IT IS CONFIDENTIAL AND A PROPERTY OF Amphenol LTW. DISCLOSURE TO THIRD PARTY HAS TO BE AUTHORIZED BY Amphenol LTW.

- [illegible]



	I	2	3	4	5	6	7	8						
F					REV.	ECN NO.	DATE	SIGN	DESCRIPTION					
E	MSAP-XXBFFB-SL700I △ XX: No. Of Pin				B	C2I056I	2021/04/I4	Vicky	△ X4					
D	<p style="text-align: center;">Connector Clamp Ring Seal Sealing Nut</p>													
C	<p style="text-align: center;">47.0(ref.) Ø18.6 16.0 Hex. 16.0 Hex.</p>													
B					<p>△ Note:</p> <ul style="list-style-type: none">* RoHS Compliant* Ⓞ Important Dimension* Waterproof rate: IPX7, mated* Connector Housing: Thermoplastic, BlackPin: Copper alloy, Gold platedExtension Nut: Thermoplastic, BlackNut: Thermoplastic, BlackO-Ring: Rubber, Gray* Clamp Ring: Thermoplastic, Black* Sealing Nut: Thermoplastic, Black* Seal: Rubber, Gray, OD: Ø4.0mm~Ø8.0mm* One set unassembled in one pe bag									
A	UNIT:mm △ TOLERANCE .X ±0.25 .XX ±0.1 .XXX ±0.05 ANGLES ±1°													
TITLE N SEN, M12 A -PLASTIC, SCREW CABLE W/O SR, F, F, FI SREWIN △														
SCALE I:I SIZE A4 SHEET I OF I REV. B WC-REV. A.3 QC: Inspection item					Amphenol LTW 安費諾亮泰企業股份有限公司				ITEM NO DWG NO MSAP-XXBFFB-SL700I CUSTOMER ALTW DRAWN BY Mila CHECKED BY Cary APPROVED BY Jerry DATE 2015-09-29 2015-09-29 2015-09-29					
	I	2	3	4	5	6	7	8						
	WI08I4-03-BW0IAZ													

[illegible][illegible][illegible]

Mouser Electronics

Authorized Distributor

Click to View Pricing, Inventory, Delivery & Lifecycle Information:

[Amphenol:](#)

[MSAP-03BFFB-SL7001](#)

[MSAP-04BFFB-SL7001](#)

[MSAP-08BFFB-SL7001](#)

[MSAP-05BFFB-SL7001](#)