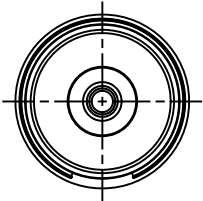
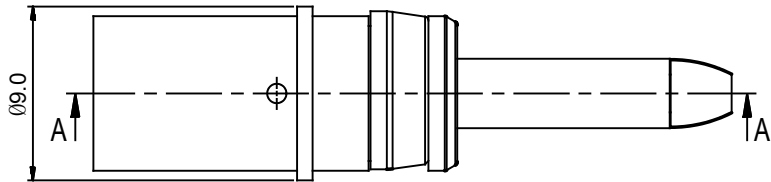
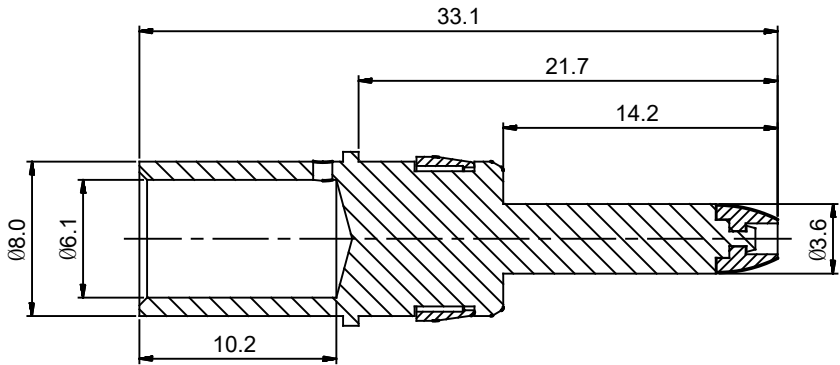


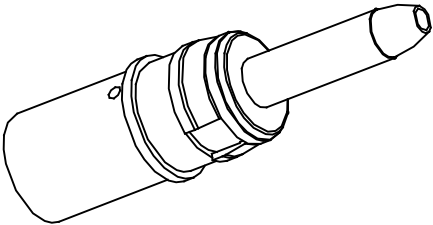
REVISIONS					
REV	ECO	DESCRIPTION	DATE	BY	APPR
B1	-	RELEASE NEW DWG FORMAT	08/25/14	DRACK	TOMMY




- NOTES: UNLESS OTHERWISE SPECIFIED
- MATERIAL: COPPER ALLOY, SILVER PLATED
  - SPECIFICATIONS:
    - RATED CURRENT: 86 AMPS
    - CONTACT RESISTANCE: <0.3 MILLIOHM
    - AVAILABLE WIRE RANGE: 16 MM<sup>2</sup>
    - RoHS COMPLIANT
  - ALL DIMENSIONS ARE FOR REFERENCE USE ONLY.



SECTION A-A



SEE PART NUMBER CHART		PART NUMBER		DESCRIPTION		ITEM
QUANTITY	PART NUMBER		DESCRIPTION			ITEM
MATERIALS LIST						
<b>UNLESS OTHERWISE SPECIFIED:</b> 1) All dimensions are in metric(mm). 2) Tolerances are as follows: 1 PL DEC ±0.30 2 PL DEC ±0.15 3 PL DEC ±0.08 3) Note reference = 		SIGNATURES		DATE		<div>Amphenol</div> <div>Sine Systems - www.amphenol-sine.com 44724 Morley Drive Clinton Township, MI 48036</div> <div>PIN CONTACT WITH RADSOK TECHNOLOGY. CRIMP BARREL, SIZE 8(3.6MM) WIRE RANGE 10MM, 8AWG</div>
		DRAWN: Drack		08/25/14		
		CHECKED:				
		ENGINEER:				
MATERIAL SPECIFICATIONS:		APPROVAL:				SIZE: B    TYPE: C-    DWG NO: MP6ARS8S    REVISION: B1
PROCESS SPECIFICATIONS:		CUSTOMER:				
NEXT ASSY:		THIS DRAWING IS SUPPLIED FOR INFORMATION ONLY. DESIGN FEATURES, SPECIFICATIONS AND PERFORMANCE DATA SHOWN HEREON ARE THE PROPERTY OF THE AMPHENOL CORPORATION. NO RIGHTS OF REPRODUCTION ARE IMPLIED. ALL DIMENSIONS ARE SUBJECT TO NORMAL MANUFACTURING VARIATIONS.				
		SCALE: 2 : 1		SHEET 11 OF		

TITLE: ECO-MATE 3.6MM PIN CONTACT, CRIMP 16MM<sup>2</sup> DWG NO: MP6ARS8S REV: B1 SH: 1 OF: 1

# Mouser Electronics

Authorized Distributor

Click to View Pricing, Inventory, Delivery & Lifecycle Information:

[Amphenol:](#)

[MP6ARS8S](#)