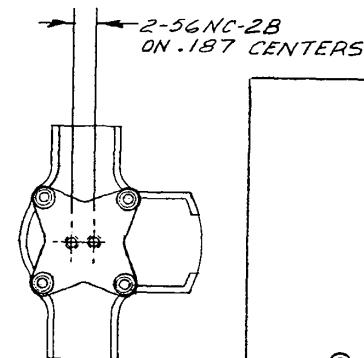
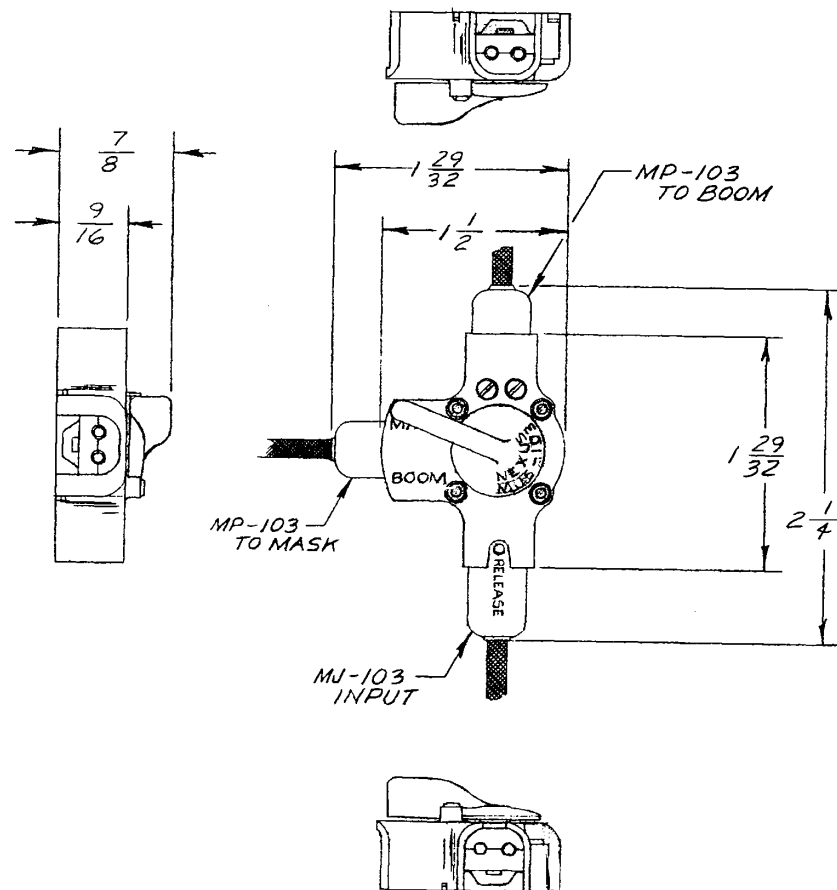


B

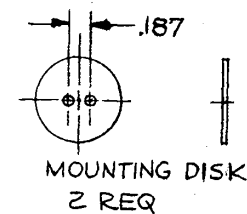
MJS-103

NOTES:

1. MATING CONNECTORS (MJ-103 & MP-103) ARE NOT SUPPLIED WITH THIS ASSEMBLY - SHOWN FOR REFERENCE ONLY.
2. BOOM PLUG IS SECURED TO SWITCH ASSEMBLY BY (2) SET SCREWS. MASK PLUG IS SECURED TO SWITCH ASSEMBLY BY SPRING DETENTS - EXTRACTION FORCE IS 4 TO 8 POUNDS.
3. HI-LOW MICROPHONE CONTACTS ARE SWITCHED BY MOVEMENT OF LEVER, GROUND CONTACTS ARE NOT SWITCHED.



BOTTOM VIEW
MTG. BRACKET



LOCKWASHER, SPLIT SCREW - #2-56 X 1/4 LG
2 REQ 2 REQ

TO ASSEMBLE NEXUS MJS-103 SWITCH TO A SPH-4 HELMET USE ALL HARDWARE SHOWN ABOVE. FAILURE TO USE LOCKWASHERS & 2 DISKS MAY CAUSE SWITCH TO JAM.

A	ADDED MOUNTING PARTS	DATE	CHK
LET	REVISION	DATE	CHK

OWN. BY <i>EC</i>	DATE <i>5/30/64</i>	MATERIAL	
CHECKED BY		FINISH	
APPR. BY <i>WHT</i>	<i>5/30/64</i>	WEIGHT	SCALE 1:1
UNLESS OTHERWISE SPECIFIED		TITLE	
DIMENSIONS ARE IN INCHES TOLERANCES ON FRACTIONS DECIMALS ANGLES		SELECTOR SWITCH, MICROPHONE - BOOM/MASK	
DO NOT SCALE DWG.		SHEET 1 OF 1	
		NEXUS STAMFORD, CONN.	
		SIZE B	DWG. NO. MJS-103

Mouser Electronics

Authorized Distributor

Click to View Pricing, Inventory, Delivery & Lifecycle Information:

[Amphenol:](#)

[MJS-103](#) [MJS-103BC](#)