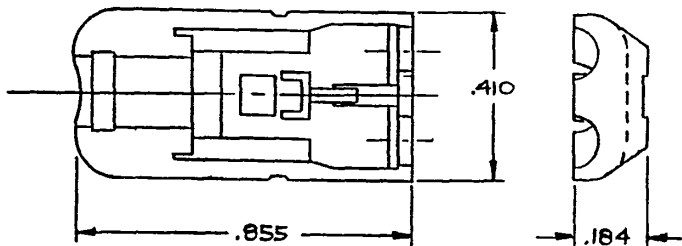
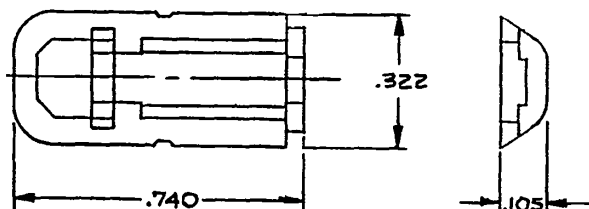


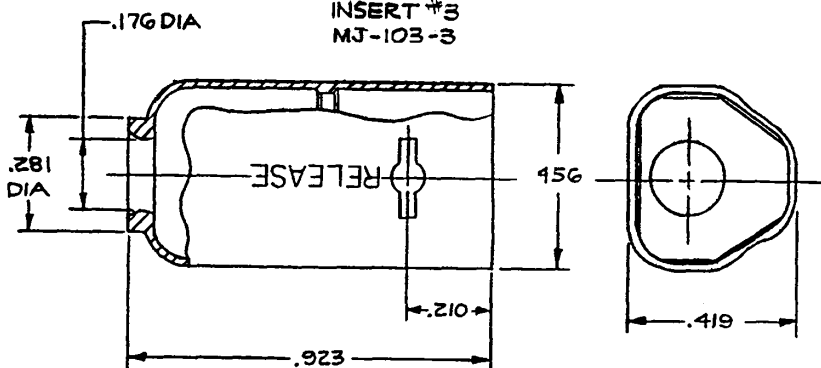
INSERT #1
MJ-103-1



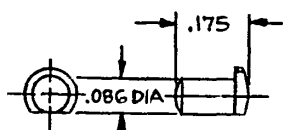
INSERT #2
MJ-103-2



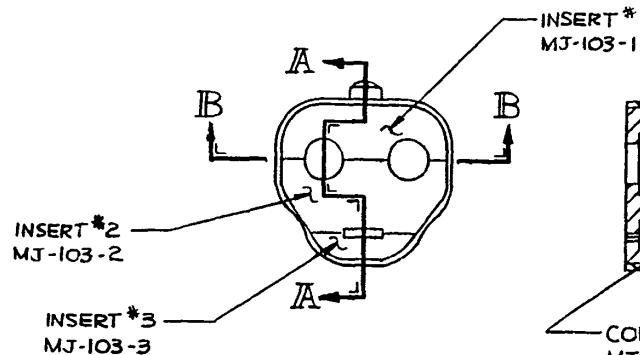
INSERT #3
MJ-103-3



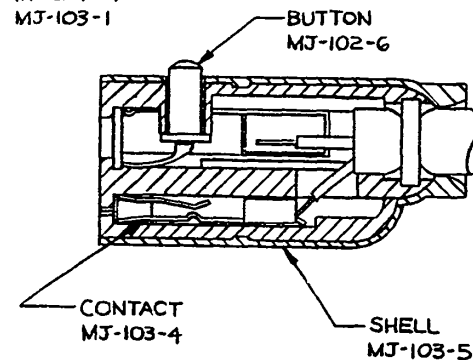
SHELL
MJ-103-5



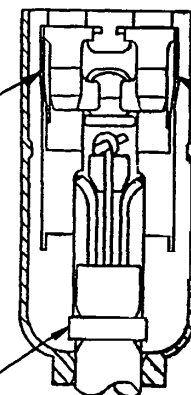
BUTTON
MJ-102-G



CONTACT (LEFT)
MJ-102-1



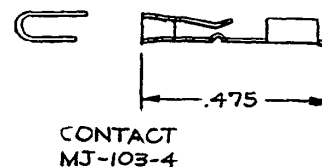
SECTION A-A



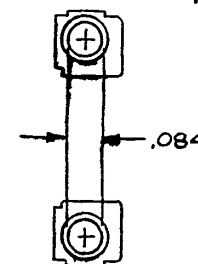
CONTACT (RIGHT)
MJ-102-2

CLAMP
MP-101-4

SECTION B-B



CONTACT (LEFT)
MJ-102-1



CONTACT (RIGHT)
MJ-102-2

THIS DOCUMENT CONTAINS PROPRIETARY INFORMATION OF NEXUS, INCORPORATED AND SUCH INFORMATION MAY NOT BE DISCLOSED TO OTHERS FOR ANY PURPOSE OR USED FOR ANY PURPOSE WITHOUT THE WRITTEN CONSENT OF NEXUS.

REV	REVISION	DATE	CHK.
A	CLAMP WAS RING		

DESIGNED BY IDH	DATE 5-3-85	MATERIAL	
CHECKED BY		FINISH	
APPROVED BY		WEIGHT	SCALE 4:1
UNLESS OTHERWISE SPECIFIED DIMENSIONS ARE IN INCHES TOLERANCES ON FRACTIONS DECIMALS ANGLES		TITLE MICROPHONE JACK	
DO NOT SCALE DWG.		SHEET	OF

NEXUS
STAMFORD, CONN.

C MJ-103

C MJ-103

Mouser Electronics

Authorized Distributor

Click to View Pricing, Inventory, Delivery & Lifecycle Information:

[Amphenol:](#)

[MJ-103](#)