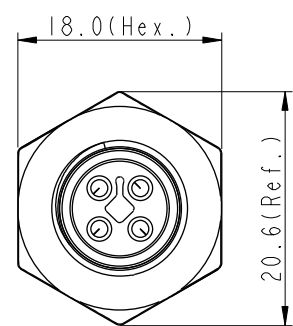
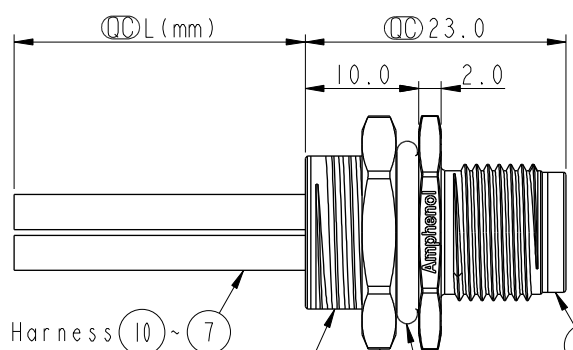
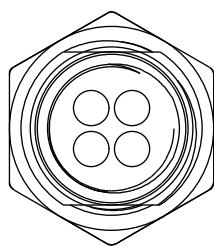
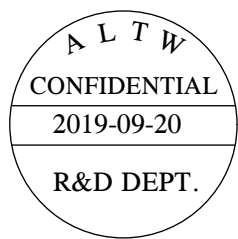
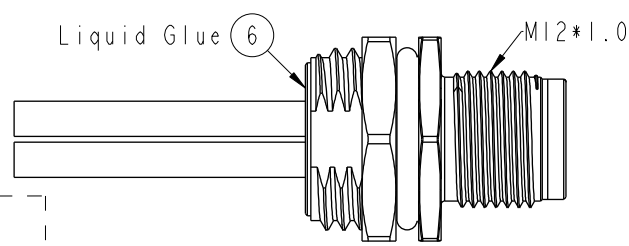


THIS DOCUMENT IS SUBJECT TO CHANGE WITHOUT NOTICE. IT IS CONFIDENTIAL AND A PROPERTY OF Amphenol LTW. DISCLOSURE TO THIRD PARTY HAS TO BE AUTHORIZED BY Amphenol LTW.

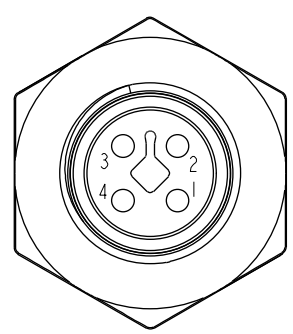
REV.	ECN NO.	DATE	SIGN	DESCRIPTION
A	Initial Release	2015/09/04	Cary	Change Rev. 01 to Rev.A
B	LE317A0023-0024	2017/10/15	Feng_Li	Update The Note
C	CI91643	2019/09/20	Vicky	Update Wire Tolerance



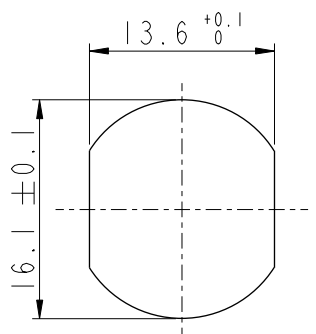
Wire Harness ⑩~⑦  
M16\*1.5 Screw Nut ⑤  
④ O-Ring  
① Connector  
② Male Pin  
③ Shield



M12T-04PMMS-SH8CXX△  
15:150mm  
20:200mm  
95:950mm  
Cable Pitch Unit:50mm  
A0:1000mm  
A5:1500mm  
Cable Pitch Unit:100mm  
Wire Length(L):150~1500mm



Pin Assignment  
Front View



Recommended  
Panel Cut-Out

4	Black	黑
3	Blue	藍
2	White	白
1	Brown	棕
Conn.	Wire Color	
	Pin Out	

Note:  
\* ⌀ Important Dimension.  
\* Waterproof Rate: IP68.  
IP68: 1M Depth Of Water In 24hours.  
△ \* Housing: Nylon+GF, UL94V-0, Black.  
\* Male Pin: Copper Alloy, Gold Plated.  
\* Shield: Zinc Alloy, Nickel Plated.  
\* Panel Nut: Zinc Alloy, Nickel Plated.  
\* O-Ring: Viton, Black.  
\* Wire Harness: UL1015 16AWG (1.5mm²).  
\* Rated Voltage: 60V DC.  
\* Rated Current at 40°C: 12A  
\* Operation Temperature: -40~85℃.  
\* For Panel Thickness Max 4.5mm.  
\* Nut Torque: 4-6 Kgf.cm (0.4~0.6N.m).  
\* Wire harness Tolerance: 150~300 ±15mm  
301~1000 ±20mm  
△ Over1000 +50/-0mm

UNIT:mm		TITLE		ITEM NO		DRAWN BY		DATE	
TOLERANCE		M12 T-Code 4Pin Male Type		DWG NO		Vicky		2019-09-20	
.X	±0.25	SCALE	1:1	SIZE	A4	CHECKED BY	Rita	DATE	2019-09-20
.XX	±0.1	REV.	C	WC-REV.	A.3	APPROVED BY	Max	DATE	2019-09-20
.XXX	±0.05	SHEET 1 OF 1		CUSTOMER		ALTW		2019-09-20	
ANGLES	±1°	QC: Inspection item		Amphenol LTW		安費諾亮泰企業股份有限公司		W10814-03-0001A2	

# Mouser Electronics

Authorized Distributor

Click to View Pricing, Inventory, Delivery & Lifecycle Information:

[Amphenol:](#)

[M12T-04PMMS-SH8C15](#)