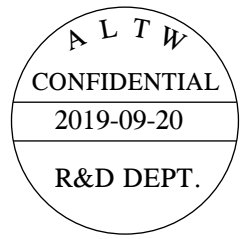


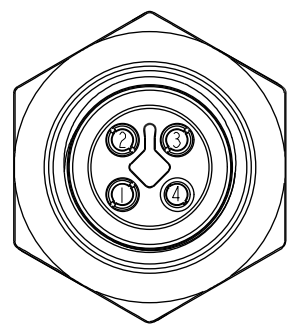
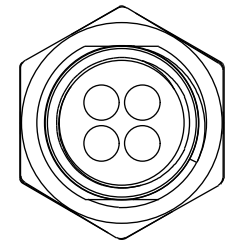
THIS DOCUMENT IS SUBJECT TO CHANGE WITHOUT NOTICE. IT IS CONFIDENTIAL AND A PROPERTY OF Amphenol LTW. DISCLOSURE TO THIRD PARTY HAS TO BE AUTHORIZED BY Amphenol LTW.

REV.	ECN NO.	DATE	SIGN	DESCRIPTION
A	Initial Release	2015/03/04	Cary	Change Rev. 01 to Rev.A
B	CI91643	2019/09/20	Vicky	Update Wire Tolerance

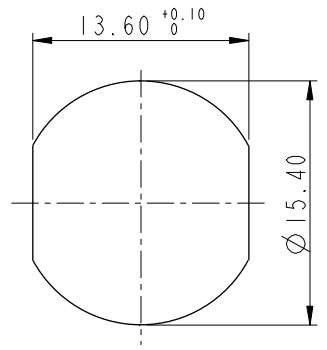


MI2T-04PFFS-SH8BXX

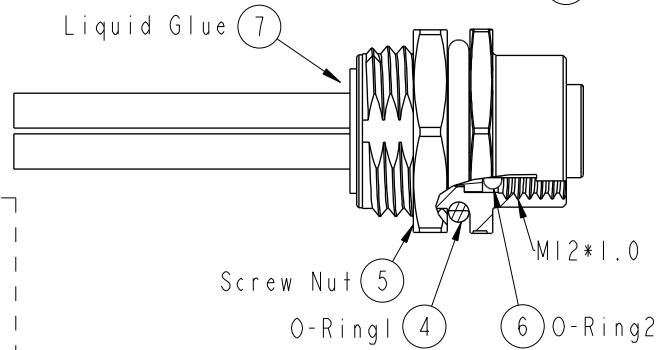
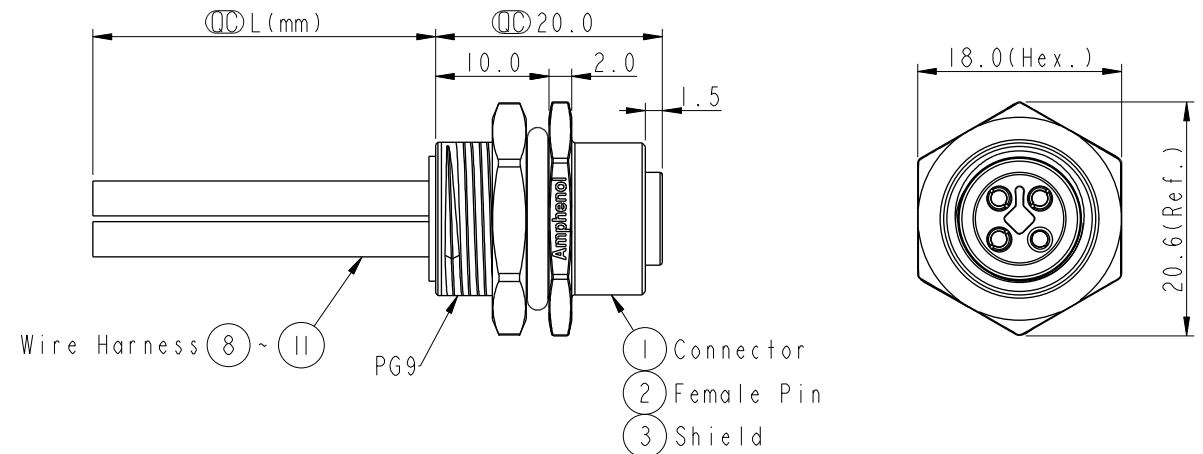
15:150mm  
20:200mm  
└┘  
95:950mm  
Cable Pitch Unit:50mm  
  
A0:1000mm  
└┘  
A5:1500mm  
Cable Pitch Unit:100mm  
Wire Length(L):150~1500mm



Pin Assignment  
Front View



Recommended  
Panel Cut-Out



4	Black	黑
3	Blue	藍
2	White	白
1	Brown	棕
Conn.	Wire Color	
	Pin Out	

Note:  
\* Important Dimension.  
\* Waterproof Rate: IP68.  
\* IP68: 1M Depth Of Water In 24hours.  
\* Housing: PA66, UL94V-0, Black.  
\* Female Pin: Copper Alloy, Gold Plated.  
\* Shield: Zinc Alloy, Nickel Plated.  
\* Panel Nut: Zinc Alloy, Nickel Plated.  
\* O-Ring1: Viton, Black.  
\* O-Ring2: Viton, Green.  
\* Wire Harness: UL1015 16AWG (1.5mm²).  
\* Rated Voltage: 60V DC.  
\* Rated Current at 40°C: 12A  
\* Operation Temperature: -40~85℃.  
\* For Panel Thickness Max 4.5mm.  
\* Nut Torque: 4-6 Kgf.cm (0.4~0.6 N.m).  
\* Wire harness Tolerance: 150~300 ±15mm  
301~1000 ±20mm  
 Over 1000 +50/-0mm

UNIT:mm		 		TITLE M12 T-Code 4Pin Female Type				Amphenol LTW 安費諾亮泰企業股份有限公司				ITEM NO		DRAWN BY Vicky		DATE 2019-09-20	
TOLERANCE .X ±0.25 .XX ±0.1 .XXX ±0.05 ANGLES ±1°												SCALE 2:1		SIZE A4		SHEET 1 OF 1	
				REV. B		WC-REV. A.3		QC:Inspection item		CUSTOMER ALTW		APPROVED BY Max		DATE 2019-09-20			

安費諾亮泰企業股份有限公司

# Mouser Electronics

Authorized Distributor

Click to View Pricing, Inventory, Delivery & Lifecycle Information:

[Amphenol:](#)

[M12T-04PFFS-SH8B30](#) [M12T-04PFFS-SF8B30](#)