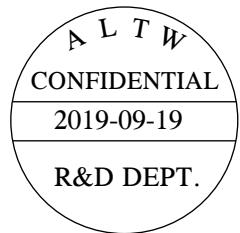


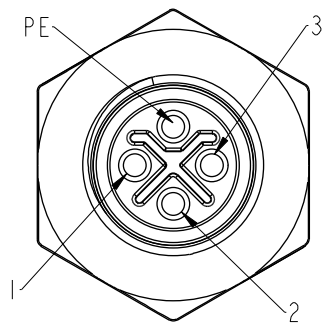
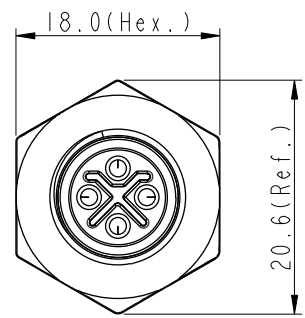
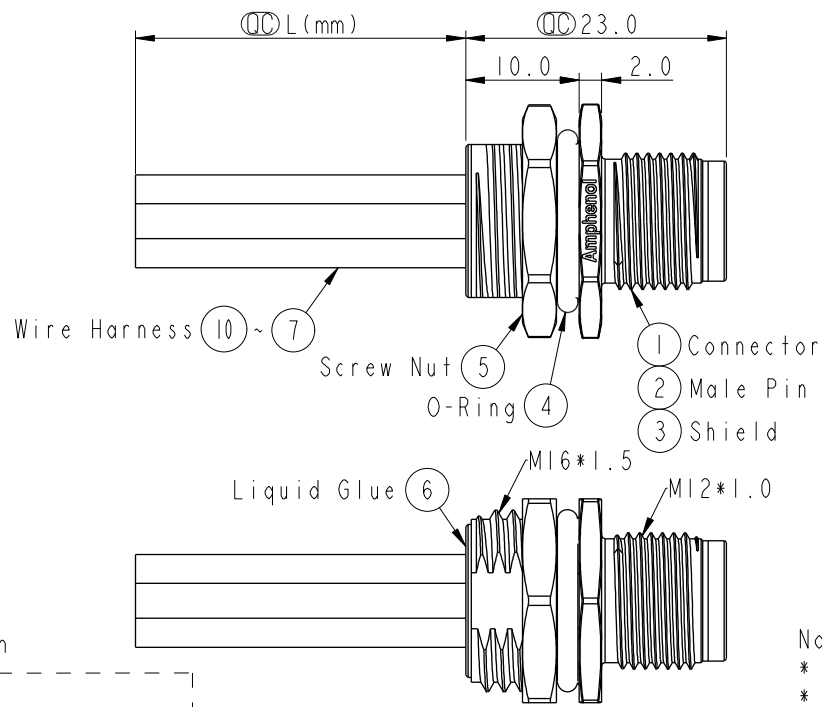
THIS DOCUMENT IS SUBJECT TO CHANGE WITHOUT NOTICE. IT IS CONFIDENTIAL AND A PROPERTY OF Amphenol LTW. DISCLOSURE TO THIRD PARTY HAS TO BE AUTHORIZED BY Amphenol LTW.



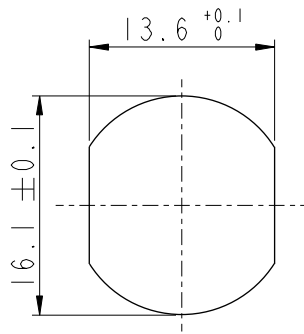
REV.	ECN NO.	DATE	SIGN	DESCRIPTION
A	Initial Release	2015/09/07	Cary	Change Rev. 01 to Rev.A
B	LE317A0008-0009	2017/10/09	Feng_Li	Update The Note
C	CI91643	2019/09/19	Vicky	Update Wire Tolerance

M12S-04PMMS-SH8CXX

15:150mm
20:200mm
95:950mm
Cable Pitch Unit:50mm
A0:1000mm
A5:1500mm
Cable Pitch Unit:100mm
Wire Length(L):150~1500mm



Pin Assignment
Front View



Recommended
Panel Cut-Out

PE	Black	黑
3	Blue	藍
2	White	白
1	Brown	棕
Conn.	Wire Color	
	Pin Out	

Note:
* \varnothing Important Dimension.
* Waterproof Rate: IP68.
IP68: 1M Depth Of Water In 24hours.
* Housing: Nylon+GF, UL94V-0, Black.
* Male Pin: Copper Alloy, Gold Plated.
* Shield: Zinc Alloy, Nickel Plated.
* Panel Nut: Zinc Alloy, Nickel Plated.
* O-Ring: Viton, Black.
* Wire Harness: UL1015 16AWG(1.5mm²).
* Rated Voltage: 630V AC
* Rated Current at 40°C: 12A
* Operation Temperature: -40~85°C.
* For Panel Thickness Max 4.5mm.
* Nut Torque: 4-6 Kgf.cm(0.4~0.6N.m).
* Wire harness Tolerance: 150~300 ±15mm
301~1000 ±20mm
Over1000 +50/-0mm

UNIT:mm		TITLE		ITEM NO		DRAWN BY		DATE	
TOLERANCE		M12 S-Code 4Pin Male Type		DWG NO		Vicky		2019-09-19	
.X	±0.25	SCALE	1:1	SIZE	A4	CHECKED BY	Rita	DATE	2019-09-19
.XX	±0.1	REV.	C	WC-REV.	A.2	APPROVED BY	Max	DATE	2019-09-19
.XXX	±0.05	SHEET 1 OF 1		CUSTOMER		ALTW			
ANGLES	±1°	QC: Inspection item		Amphenol LTW		安費諾亮泰企業股份有限公司			

Mouser Electronics

Authorized Distributor

Click to View Pricing, Inventory, Delivery & Lifecycle Information:

[Amphenol:](#)

[M12S-04PMMS-SH8C15](#)