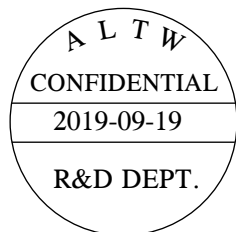
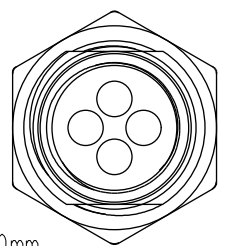


THIS DOCUMENT IS SUBJECT TO CHANGE WITHOUT NOTICE. IT IS CONFIDENTIAL AND A PROPERTY OF Amphenol LTW. DISCLOSURE TO THIRD PARTY HAS TO BE AUTHORIZED BY Amphenol LTW.

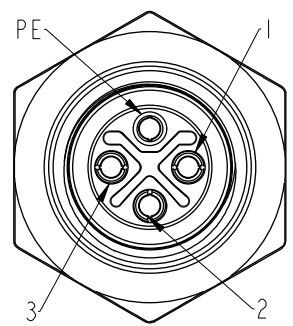
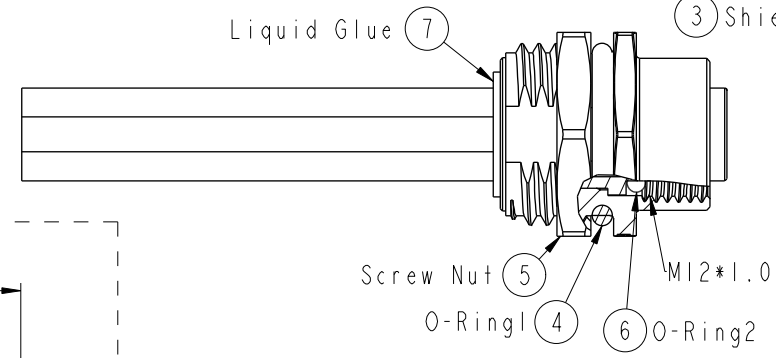
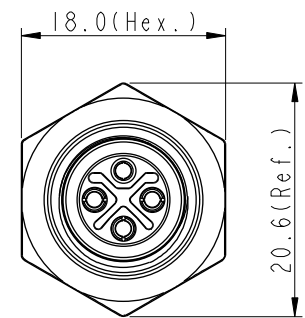
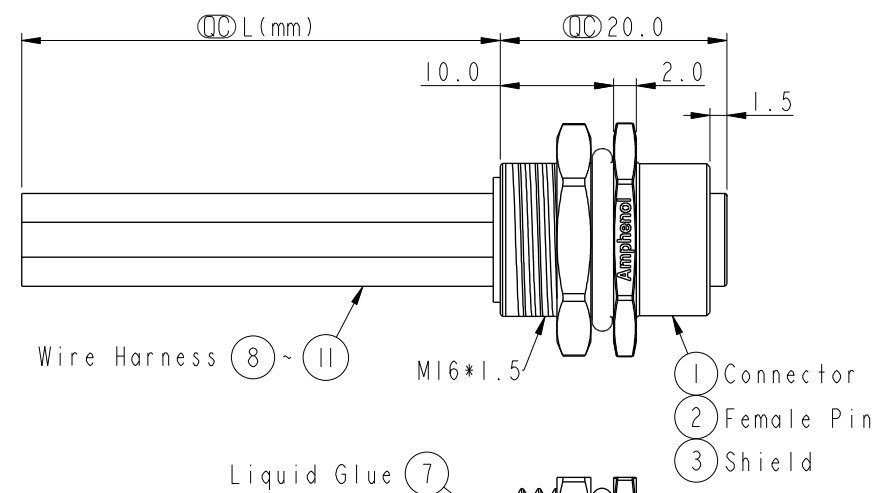
REV.	ECN NO.	DATE	SIGN	DESCRIPTION
A	Initial Release	2015/09/09	Cary	Change Rev. 01 to Rev.A
B	CI91643	2019/09/19	Vicky	Update Wire Tolerance



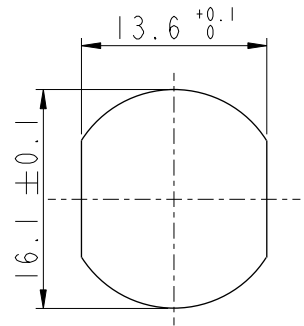
M12S-04PFFS-SH8CXX/B



15:150mm
20:200mm
95:950mm
Cable Pitch Unit:50mm
A0:1000mm
A5:1500mm
Cable Pitch Unit:100mm
Wire Length(L):150~1500mm



Pin Assignment
Front View



Recommended
Panel Cut-Out

PE	Black	黑
3	Blue	藍
2	White	白
1	Brown	棕
Conn.	Wire Color	
	Pin Out	

Note:
* \varnothing Important Dimension.
* Waterproof Rate: IP68.
* IP68: 1M Depth Of Water In 24hours.
* Housing: PA66, UL94V-0, Black.
* Female Pin: Copper Alloy, Gold Plated.
* Shield: Zinc Alloy, Nickel Plated.
* Panel Nut: Zinc Alloy, Nickel Plated.
* O-Ring1: Viton, Black.
* O-Ring2: Viton, Green.
* Wire Harness: UL1015 16AWG (1.5mm²).
* Rated Voltage: 630V AC.
* Rated Current at 40°C: 12A
* Operation Temperature: -40~85°C.
* For Panel Thickness Max 4.5mm.
* Nut Torque: 4-6 Kgf.cm (0.4~0.6 N.m).
* Wire harness Tolerance: 150~300 ±15mm
301~1000 ±20mm
Over 1000 +50/-0mm

UNIT:mm		TITLE		ITEM NO		DRAWN BY		DATE	
		M12 S-Code 4Pin Female Type		ALTW		Vicky		2019-09-19	
TOLERANCE		SCALE	SIZE	SHEET	OF	CHECKED BY		DATE	
.X ±0.25		2:1	A4	1	1	Rita		2019-09-19	
.XX ±0.1		REV.	WC-REV.	QC: Inspection item		APPROVED BY		DATE	
.XXX ±0.05		B	A.1			Max		2019-09-19	
ANGLES ±1°									

Amphenol LTW
安費諾亮泰企業股份有限公司

Mouser Electronics

Authorized Distributor

Click to View Pricing, Inventory, Delivery & Lifecycle Information:

[Amphenol:](#)

[M12S-04PFFS-SH8C15](#)