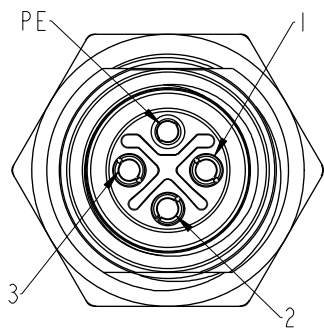


REV.	ECN NO.	DATE	SIGN	DESCRIPTION
A	Initial Release	2015/09/09	Cary	Change Rev. 01 to Rev.A
B	CI91643	2019/09/18	Vicky	Update Wire Tolerance

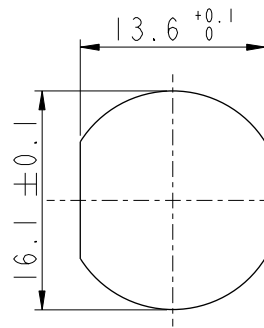
MI2S-04PFFS-SF8CXX△B

15:150mm
20:200mm
95:950mm
Cable Pitch Unit:50mm

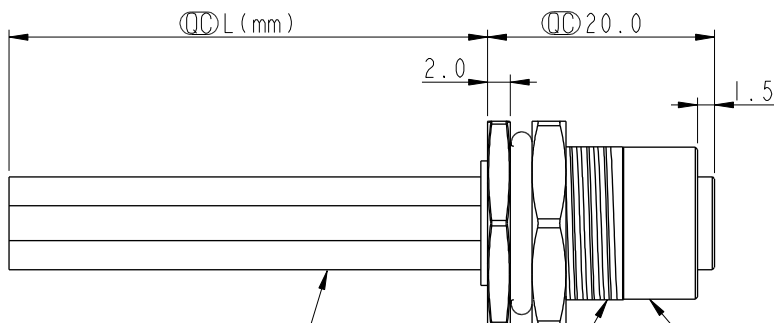
A0:1000mm
A5:1500mm
Cable Pitch Unit:100mm
Wire Length(L):150~1500mm



Pin Assignment
Front View

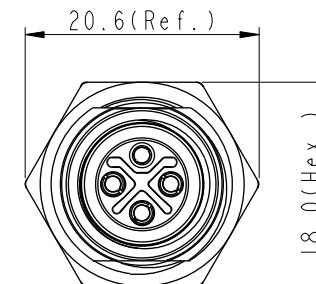
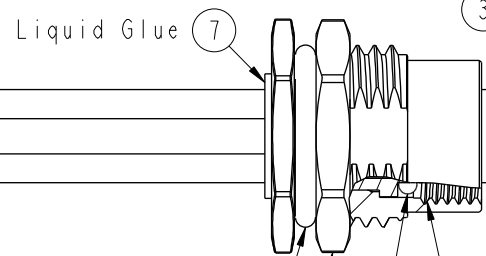


Recommended
Panel Cut-Out



Wire Harness (8)~(11)

① Connector
② Female Pin
③ Shield



Note:
* \varnothing Important Dimension.
* Waterproof Rate: IP68.
* IP68: 1M Depth Of Water In 24hours.
* Housing: PA66, UL94V-0, Black.
* Female Pin: Copper Alloy, Gold Plated.
* Shield: Zinc Alloy, Nickel Plated.
* Panel Nut: Zinc Alloy, Nickel Plated.
* O-Ring1: Viton, Black.
* O-Ring2: Viton, Green.
* Wire Harness: UL1015 16AWG(1.5mm²).
* Rated Voltage: 630V AC.
* Rated Current at 40°C: 12A.
* Operation Temperature: -40~85°C.
* For Panel Thickness Max 4.5mm.
* Nut Torque: 4~6 Kgf-cm (0.4~0.6N.m).
* Wire harness Tolerance: 150~300 ±15mm
301~1000 ±20mm
△ Over1000 +50/-0mm

PE	Black	黑
3	Blue	藍
2	White	白
1	Brown	棕
Conn.	Wire Color	
Pin Out		

UNIT:mm		
TOLERANCE		
.X	±0.25	
.XX	±0.1	
.XXX	±0.05	
ANGLES	±1°	

TITLE MI2 S-Code 4Pin Female Type			
SCALE	2:1	SIZE	A4
REV.	B	WC-REV.	A.1
SHEET 1 OF 1 QC: Inspection item			

Amphenol LTW
安費諾亮泰企業股份有限公司

ITEM NO	DRAWN BY	DATE
DWG NO	CHECKED BY	DATE
CUSTOMER	APPROVED BY	DATE
ALTW	Max	2015-09-09

THIS DOCUMENT IS SUBJECT TO CHANGE WITHOUT NOTICE. IT IS CONFIDENTIAL AND A PROPERTY OF Amphenol LTW. DISCLOSURE TO THIRD PARTY HAS TO BE AUTHORIZED BY Amphenol LTW.

Mouser Electronics

Authorized Distributor

Click to View Pricing, Inventory, Delivery & Lifecycle Information:

[Amphenol:](#)

[M12S-04PFFS-SF8C15](#)