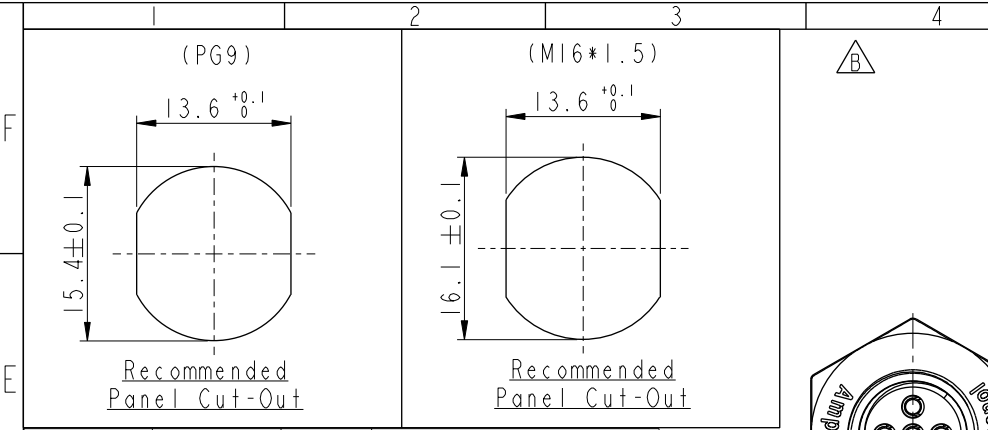
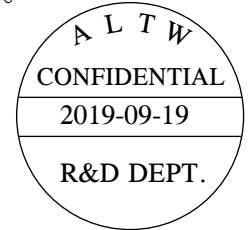
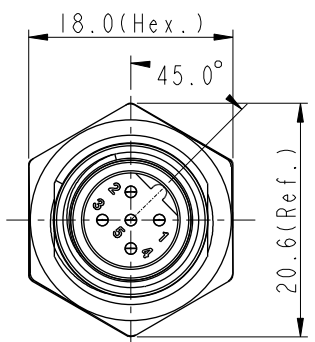
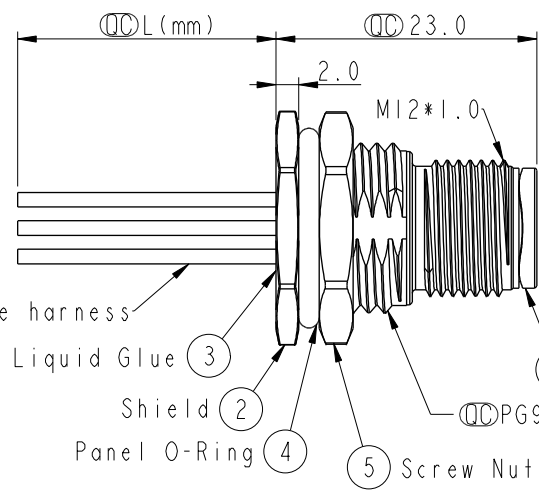
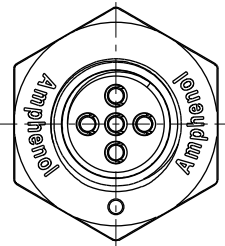


THIS DOCUMENT IS SUBJECT TO CHANGE WITHOUT NOTICE. IT IS CONFIDENTIAL AND A PROPERTY OF Amphenol LTW. DISCLOSURE TO THIRD PARTY HAS TO BE AUTHORIZED BY Amphenol LTW.

REV.	ECN NO.	DATE	SIGN	DESCRIPTION
B	LE31580008-009	2015-07-27	Yulong_wang	Change to Share Drawing.
C	E191630	2019-09-19	Ruru	Update Wire Tolerance



5P	UL1061	22	M12B-05PMMC-SF8BXX M12B-05PMMC-SF8CXX
Contacts	Wire harness	AWG	Item No.



M 12B - 05 P M M C - S F 8 X XX

12B: B-Code  
05: 5Pin  
P: Panel (板端)  
M: Male Connector (公座)  
M: Male Pin (公Pin)  
C: Crimp Type (打端式)  
S: Screw (螺紋式)

15: 150mm  
20: 200mm  
95: 950mm  
Cable Pitch Unit=50mm

A0: 1000mm  
A5: 1500mm  
Cable Pitch Unit=100mm  
Wire Length (L): 150~1500 mm

B: PG9  
C: M16\*1.5

8: IP68 (防水等級68)

F: Front Fasten (前鎖式/Enclosure Rear Mount)

5	Gray	灰
4	Black	黑
3	Blue	藍
2	White	白
1	Brown	棕

Pin #	Wire
	Pin Out

Note:

- \* Important Dimension.
- \* Waterproof Rate: IP68.
- \* Housing: Nylon+GF, Black.
- \* Male Pin: Copper Alloy, Gold Plated.
- \* Shield: Zinc Alloy, Nickel Plated.
- \* Screw Nut: Zinc Alloy, Nickel Plated.
- \* Panel O-Ring: Viton, Black.
- \* Wire harness: UL1061
- \* Rated Voltage: 60V dc. or ac.
- \* Rated Current: 4A
- \* Operating Temperature: -25~85°C
- \* For Panel Thickness Max 4.5mm.
- \* Recommended Nut Torque: 4~6 Kgf.cm.
- \* Wire harness Tolerance: 150~300±15mm  
301~1000±20mm  
Over1000 ±50/-0mm

UNIT:mm						TITLE M12 B-Code Male Conn. Panel Front With Wire harness		ITEM NO		DRAWN BY Ruru		DATE 2019-09-19	
TOLERANCE		.X ±0.25		.XX ±0.1		.XXX ±0.05		DWG NO M12B-05PMMC-SF8XXX		CHECKED BY Rita		DATE 2019-09-19	
ANGLES		±1°		REV. C		WC-REV. A.5		CUSTOMER ALTW		APPROVED BY Max		DATE 2019-09-19	

Amphenol LTW  
安費諾亮泰企業股份有限公司

# Mouser Electronics

Authorized Distributor

Click to View Pricing, Inventory, Delivery & Lifecycle Information:

[Amphenol:](#)

[M12B-05PMMC-SF8B15](#) [M12B-05PMMC-SF8C15](#)