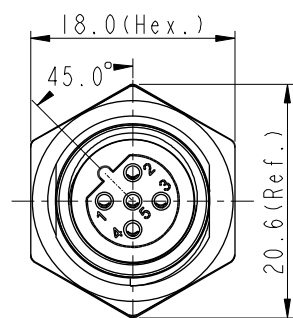
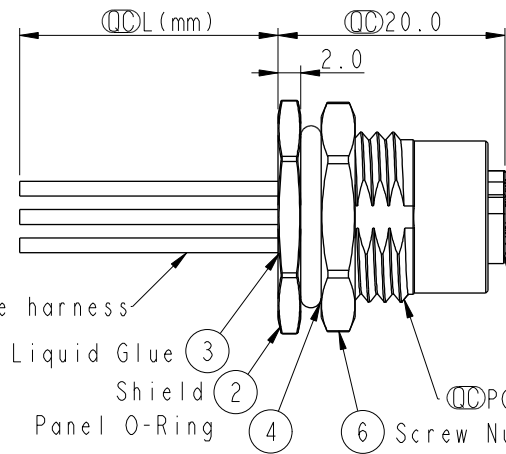
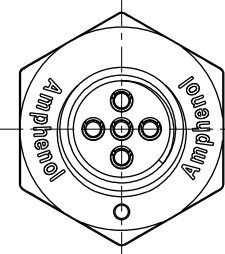
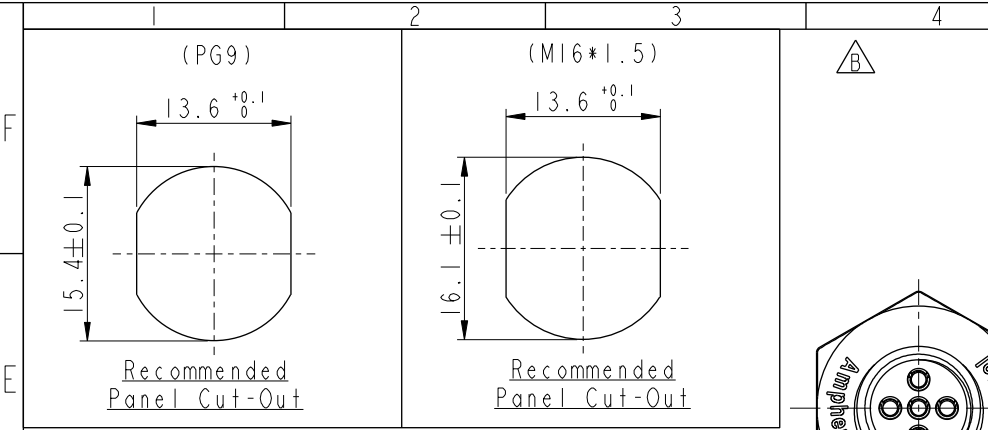


THIS DOCUMENT IS SUBJECT TO CHANGE WITHOUT NOTICE. IT IS CONFIDENTIAL AND A PROPERTY OF Amphenol LTW. DISCLOSURE TO THIRD PARTY HAS TO BE AUTHORIZED BY Amphenol LTW.

| REV. | ECN NO. | DATE | SIGN | DESCRIPTION |
|------|----------------|------------|-------------|--------------------------|
| B | LE31580004-005 | 2015-07-27 | Yulong_wang | Change to Share Drawing. |
| C | E191630 | 2019-09-19 | Ruru | Update Wire Tolerance |



M 12B - 05 P F F C - S F 8 X XX

12B: B-Code
05: 5Pin
P: Panel (板端)
F: Female Connector (母座)
F: Female Pin (母Pin)
C: Crimp Type (打端式)
S: Screw (螺紋式)

15: 150mm
20: 200mm
95: 950mm
Cable Pitch Unit=50mm

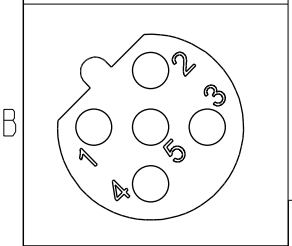
A0: 1000mm
A5: 1500mm
Cable Pitch Unit=100mm
Wire Length (L): 150~1500 mm

B: PG9
C: M16*1.5

8: IP68 (防水等級68)

F: Front Fasten (前鎖式/Enclosure Rear Mount)

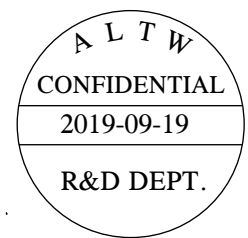
| Pin # | Wire | Pin Out |
|-------|-------|---------|
| 5 | Gray | 灰 |
| 4 | Black | 黑 |
| 3 | Blue | 藍 |
| 2 | White | 白 |
| 1 | Brown | 棕 |



| | | | |
|----------|--------------|-----|--|
| 5P | UL1061 | 22 | M12B-05PFFC-SF8BXX M12B-05PFFC-SF8CXX |
| Contacts | Wire harness | AWG | Item No. |

Note:

- * Important Dimension.
- * Waterproof Rate: IP68.
- * Housing: Nylon+GF, Black.
- * Female Pin: Copper Alloy, Gold Plated.
- * Shield: Zinc Alloy, Nickel Plated.
- * Screw Nut: Zinc Alloy, Nickel Plated.
- * Panel O-Ring: Viton, Black.
- * Housing O-Ring: Viton, Green.
- * Wire harness: UL1061
- * Rated Voltage: 60V dc. or ac.
- * Rated Current: 4A
- * Operating Temperature: -25~85°C
- * For Panel Thickness Max 4.5mm.
- * Recommended Nut Torque: 4-6 Kgf.cm.
- * Wire harness Tolerance: 150~300±15mm
301~1000±20mm
Over1000 ±50/-0mm



| | | | |
|-----------------|--|--------------|---|
| UNIT:mm | | | TITLE M12 B-Code Female Conn. Panel Front With Wire harness |
| TOLERANCE | .X ±0.25 .XX ±0.1 .XXX ±0.05 ANGLES ±1° | SCALE 2:1 | SIZE A4 |
| REV. | C | WC-REV. | A.5 |
| Inspection item | | | |

Amphenol LTW
安費諾亮泰企業股份有限公司

| | | |
|------------------------------|--------------------|--------------------|
| ITEM NO | DRAWN BY Ruru | DATE 2019-09-19 |
| DWG NO M12B-05PFFC-SF8XXX | CHECKED BY Rita | DATE 2019-09-19 |
| CUSTOMER ALTW | APPROVED BY Max | DATE 2019-09-19 |

Mouser Electronics

Authorized Distributor

Click to View Pricing, Inventory, Delivery & Lifecycle Information:

[Amphenol:](#)

[M12B-05PFFC-SF8C15](#) [M12B-05PFFC-SF8B15](#) [M12B-05PFFC-SH8B15](#) [M12B-05PFFC-SH8C15](#)