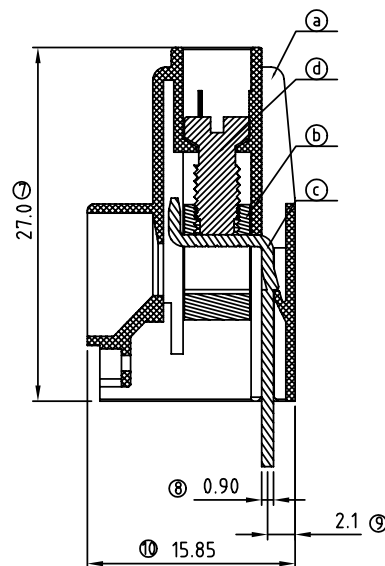
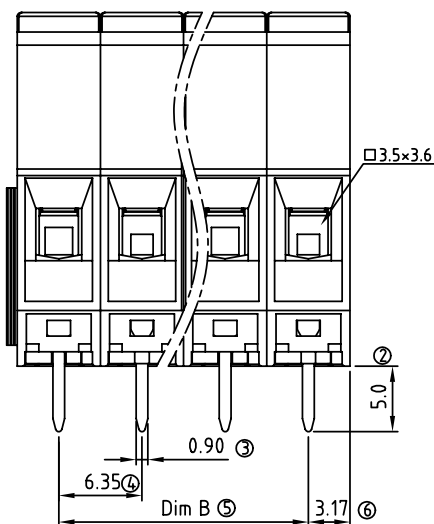


N = Number of poles

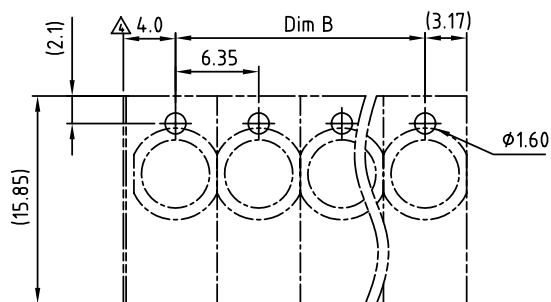
Dim A=Nx6.35

Dim B=(N-1)x6.35

Poles	Dim A	Dim B
1-6p	±0.20	±0.15
7-12p	±0.30	±0.25
13-16p	±0.40	±0.35



SECTION C-C



PCB LAYOUT


SIGN	DATE	DESCRIPTION	APPROVER
△	09/14/09	Wire guard solder pin is changed from Brass to Copper	Aaron
△	10/20/09	Part NO. is changed	Aaron
△	2010.05.31	Torque is changed from 8.9Lb-in to 5.2Lb-in	Cheng Bo
△	2010.05.31	The design is changed	Cheng Bo

THIS IS CAD DRAWING, DO NOT REVISE MANUALLY!!!

Material:

- Item a Terminal housing:Thermoplastic (UL 94V-0)
- Item b Clamp: Brass , Ni plated
- Item c Wire guard solder pin (Back single row): Copper Tin plated
- Item d Terminal screw: Steel, Zinc plating"-slot type

Electrical

- Voltage rating: 300VAC
- Current rating: 30A
- Wire range:
- Solid wire(AWG): 10-24
- Stranded wire(AWG): 10-24
- Torque(Lb-In): 5.2
- Screw: M3.5
- Wire strip length: 8-9mm
- Withstanding Voltage: 1.6KV
- Operating temperature: -40°C to +115°C
- Soldering temperature: 250°C±10°C/5 Sec
- Safety Approval: 

△ KP xx 0 1 x 1 xxxx G

No. of poles end
stackable design
01 1 CONTACTS
02 2 CONTACTS
...
16 16 CONTACTS

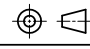
0 Black (RAL9005)
2 Red (RAL3001/D)
3 Orange(RAL2011/P)
4 Yellow(RAL1018/A)
5 Green(RAL6018/T)
6 Blue (RAL5015/A)
8 Grey(RAL7035/D)

0000:"@Logo (Standard) RoHS
000A:"ANYTEK"Logo Pb<40,000ppm
Any special item by
customer request,
please contact sales
department.

ANYTEK

CUSTOMER COPY

ALL RIGHTS RESERVED. REPRODUCTION OR ISSUE TO THIRD PARTIES IN ANY FORM WHATEVER IS NOT PERMITTED WITHOUT WRITTEN AUTHORITY FROM THE PROPRIETOR. PROPERTY OF ANYTEK TECHNOLOGY CO., LTD

TITLE	KP 6.35 Series back single row (without cover)						
PART NO.	KPxx01x1xxxxG			DWG NO.	8KP0005		
APPROVED	CHECKED	DESIGNED	DRAWN	CUST NO.	Tolerance		
			Cheng Bo 2010.05.31		UNIT: mm	X. ±0.50	
					SCALE: NONE	X.X ±0.30	
						X.XX ±0.10	
						X° ±1°	

SHEET: 01/01

REV: E

Mouser Electronics

Authorized Distributor

Click to View Pricing, Inventory, Delivery & Lifecycle Information:

Amphenol:

[KP0101510000G](#) [KP0201510000G](#) [KP0301510000G](#) [KP0401510000G](#) [KP0501510000G](#) [KP0601510000G](#)
[KP0701510000G](#) [KP0801510000G](#) [KP0901510000G](#) [KP1001510000G](#) [KP1101510000G](#) [KP1201510000G](#)
[KP1301510000G](#) [KP1401510000G](#) [KP1501510000G](#) [KP1601510000G](#)