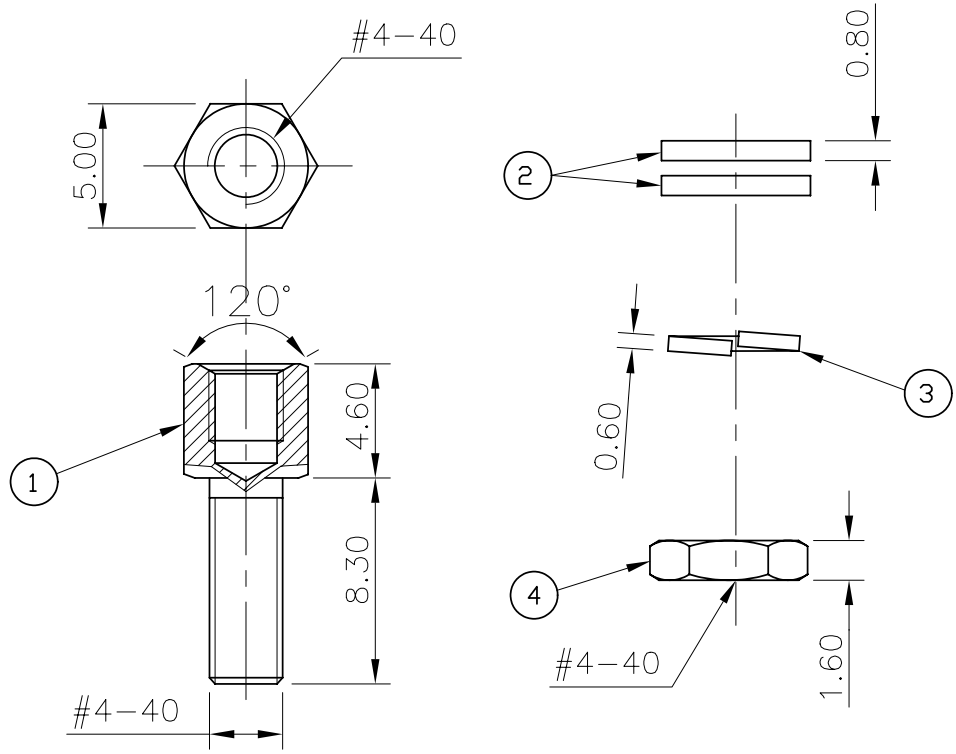


This document is the property of Amphenol Corporation and is delivered on the express condition that it is not to be disclosed, reproduced or used, in whole or in part, for manufacture or sale by anyone other than Amphenol Corporation without its prior consent, & that no right is granted to disclose or to use any information in this document.



- 1 SCREW
- 2 WASHERS
- 3 LOCK WASHER
- 4 NUT



Customer drawing

D-SUB TECHNICAL DATA

MATERIAL:

Screwlock: Steel,100u" min tin over 50u" min nickel.
Washer: Steel,100u" min tin over 50u" min nickel.
Lock washer: XC 35
Nut: Brass,100u" min tin over 50u" min nickel.

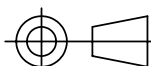
PACKAGE:

Delivered separately
1 P/N = 10 sets

MARKING:

Amphenol...(Series No.) Commercial reference
Manufacturing date

REVISIONS				
SYM	ECN	DESCRIPTION	DATE	APPROVED
1			04/25/08	

UNLESS OTHERWISE SPECIFIED		APPROVAL		DATE		Amphenol®			
TOLERANCES		DRAWN		Christina.cui				04/25/08	
U.S.		CHECKED		Hk.wang				04/25/08	
METRIC		CHECKED							
.X +/-						TITLE Accessory, screwlock with nut and washers			
.XX +/-									
.XXX +/-									
FRACTIONS									
ANGLES +/-		2°				SIZE DRAWING NO. A4 C L17D204182TX			
FOR MATERIALS AND FINISHES SEE NOTES		DRAWING FILE :				REV. 1			
REMOVE SHARP EDGES		ANGLE OF PROJECTION							
DIMENSIONS									
U.S.		INCHES							
METRIC		MM				SCALE NONE			
						SHEET 1 OF 1			

Mouser Electronics

Authorized Distributor

Click to View Pricing, Inventory, Delivery & Lifecycle Information:

[Amphenol:](#)

[L17-D20418-2-TX](#)