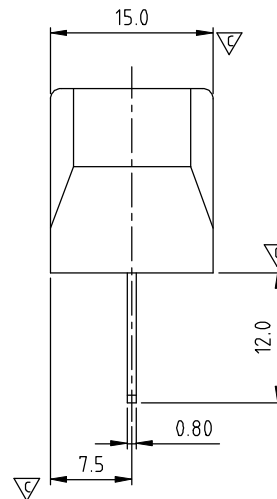
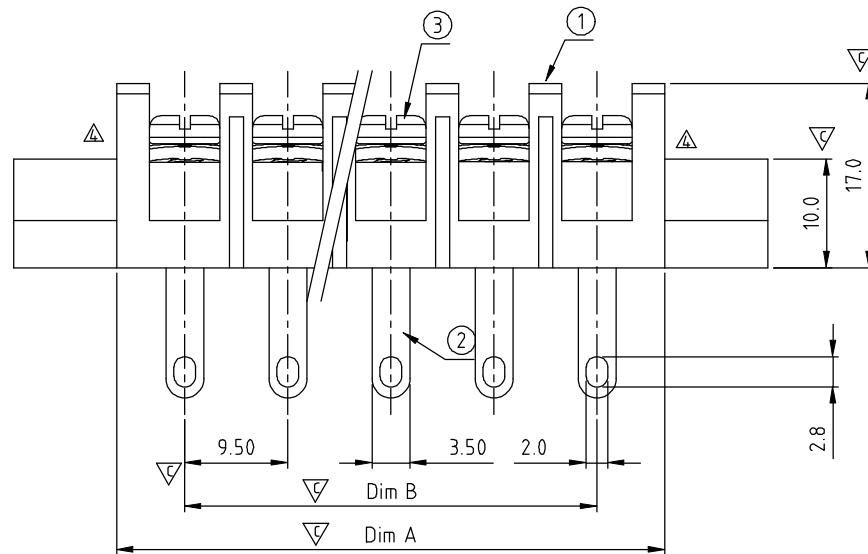


N=Number of contacts  
Dimension A&B&C

DIM A	$N \times 9.5 + 3.0$
DIM B	$(N-1) \times 9.5$
DIM C	$(N+2) \times 9.5 + 3.0$

Poles	Tolerance
4P	$\pm 0.20$
5P-10P	$\pm 0.30$
11P-24P	$\pm 0.40$
25P-32P	$\pm 0.60$



SIGN	DATE	DESCRIPTION	APPROVER
△	2011.04.28	The construction is changed here.	Tason
△	10/28'12	Change the dimensional tolerance	Jacky
△	10/28'12	Change the screw plating specification	Jacky
△	06/05'14	change the structure	Guoxue
△	06/05'14	Change the dimensional tolerance	Guoxue
THIS IS CAD DRAWING, DO NOT REVISE MANUALLY!!!			

#### MATERIALS ELECTRICAL

RATED VOLTAGE & CURRENT:

300 V, 20 A

WITHSTAND VOLTAGE:

AC 2000 V/Min

INSULATION RESISTANCE:

1000 MΩ OR MORE AT DC 500 V

OPERATING TEMPERATURE RANG:

-40 °C ~ +115 °C

SCREW TORQUE VALUE:

12 Lb-In.

WIRE RANGE:

22 - 12AWG

1) MOLDED PARTS:

Thermoplastic, UL 94 V-0 BLACK

2) TERMINAL:

BRASS, 0.8t

3) TERMINAL SCREWS:

STEEL, M3.5

APPROVAL:

Critical dimension: ▽

PART No:

YK505 xx 3 x x 00G

NO. OF POLES

04: 4 POLES

05: 5 POLES

06: 6 POLES

...

30: 30 POLES

RoHS compliant  
(lead<4%)  
In copper Alloy

MARK

0: "@" MARK

1: "ANY" MARK

TERMINAL & SCREW PLATED

0: TERMINAL & SCREW: G/F

△ 1: TERMINAL: G/F, SCREW: Zinc


2: TERMINAL: Sn, SCREW: G/F

△ 3: TERMINAL: Sn, SCREW: Zinc

# ANYTEK

## CUSTOMER COPY

ALL RIGHTS RESERVED. REPRODUCTION OR ISSUE TO THIRD PARTIES IN ANY FORM WHATEVER IS NOT PERMITTED WITHOUT WRITTEN AUTHORITY FROM THE PROPRIETOR. PROPERTY OF ANYTEK TECHNOLOGY CO., LTD

TITLE		YK-505 W/Flange&W/O Cover Series (4P-30P)					
PART NO.		YK505xx3xx00G		DWG NO.		8YK0003-505	
APPROVED		CHECKED	DESIGNED	DRAWN	CUST NO.		Tolerance
			Guoxue 2014.06.11	Guoxue 2014.06.11			X.     ±0.50
					UNIT:   mm		X.X    ±0.30
					SCALE: NONE		X.XX   ±0.10
					SHEET: 01/01		X°     ±1°
					REV.: F		

# Mouser Electronics

Authorized Distributor

Click to View Pricing, Inventory, Delivery & Lifecycle Information:

## Amphenol:

<a href="#"><u>YK5050233000G</u></a>	<a href="#"><u>YK5050333000G</u></a>	<a href="#"><u>YK5050433000G</u></a>	<a href="#"><u>YK5050533000G</u></a>	<a href="#"><u>YK5050633000G</u></a>	<a href="#"><u>YK5050733000G</u></a>
<a href="#"><u>YK5050833000G</u></a>	<a href="#"><u>YK5050933000G</u></a>	<a href="#"><u>YK5051033000G</u></a>	<a href="#"><u>YK5051133000G</u></a>	<a href="#"><u>YK5051233000G</u></a>	<a href="#"><u>YK5051333000G</u></a>
<a href="#"><u>YK5051433000G</u></a>	<a href="#"><u>YK5051533000G</u></a>	<a href="#"><u>YK5051633000G</u></a>	<a href="#"><u>YK5051733000G</u></a>	<a href="#"><u>YK5051833000G</u></a>	<a href="#"><u>YK5051933000G</u></a>
<a href="#"><u>YK5052033000G</u></a>	<a href="#"><u>YK5052133000G</u></a>	<a href="#"><u>YK5052233000G</u></a>	<a href="#"><u>YK5052333000G</u></a>	<a href="#"><u>YK5052433000G</u></a>	<a href="#"><u>YK5052533000G</u></a>
<a href="#"><u>YK5052633000G</u></a>	<a href="#"><u>YK5052733000G</u></a>	<a href="#"><u>YK5052833000G</u></a>	<a href="#"><u>YK5052933000G</u></a>	<a href="#"><u>YK5053033000G</u></a>	