

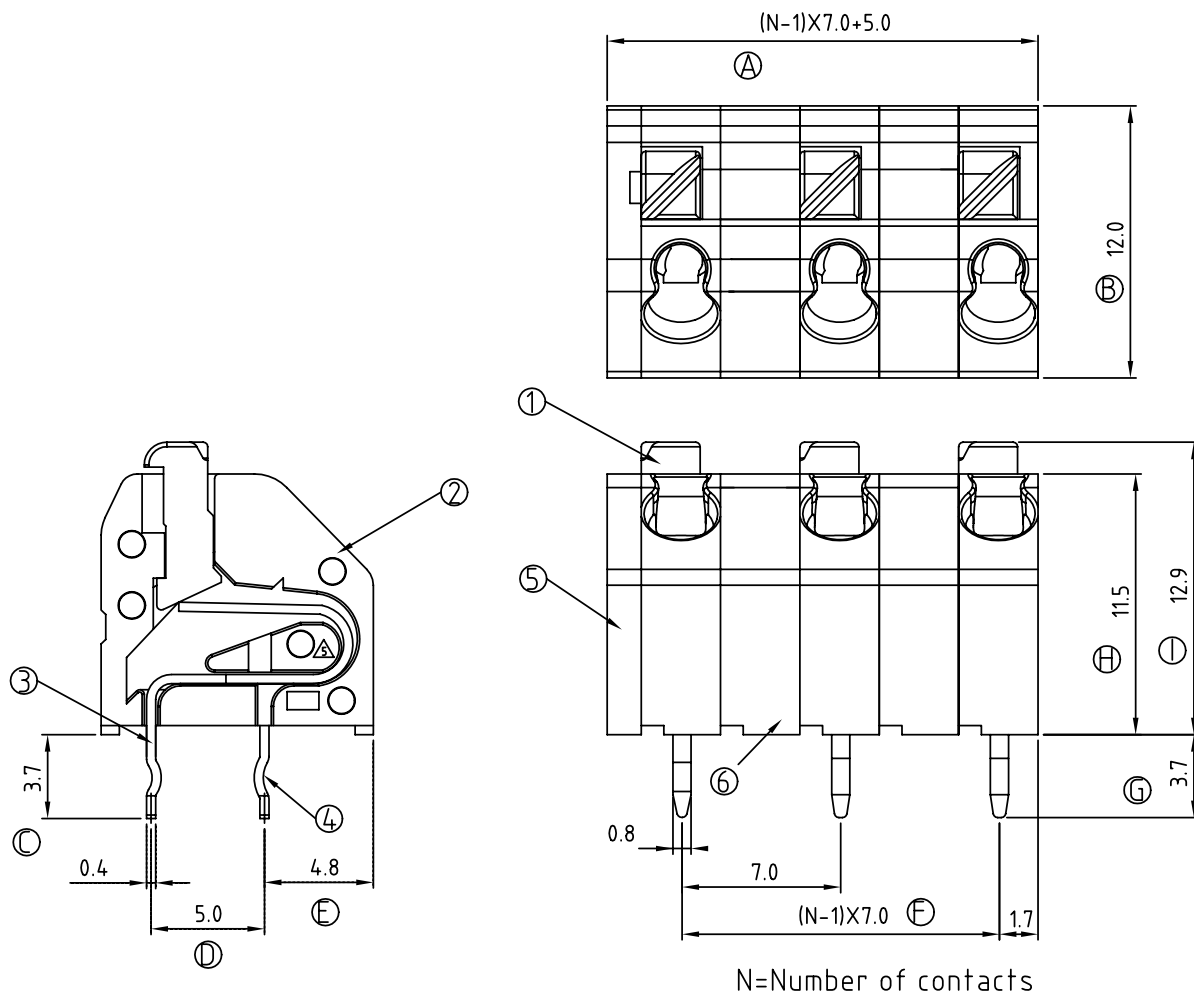
E

D

C

B

A



N=Number of contacts

P.C.B. LAYOUT

SIGN	DATE	DESCRIPTION	APPROVER
△	01/26'07	The Soldering temperature from 245° to 250°	Aaron
△	01/26'07	Add "VDE" stipulation	Aaron
△	12/25'08	Add "TUV" stipulation	Tony
△	5/06'10	Electrical changed	Runner
△	6/03'10	Structure changed	Cheng Bo
△	12/25'10	How to order is changed	Runner

THIS IS CAD DRAWING, DO NOT REVISE MANUALLY!!!

Material:

- Item ① Insulator(lever): Thermoplastic (UL94V-0)
- Item ② Insulator(housing): Thermoplastic (UL94V-0)
- Item ③ Side contact pin: PhBz.Tin plated.
- Item ④ Center contact pin: PhBz.Tin plated.
- Item ⑤ Side Cover : Thermoplastic (UL94V-0)
- Item ⑥ Insulator(Board): Thermoplastic (UL94V-0)

△△△	Electrical:	cULus	VDE
●	Voltage rating:	300V	250V
●	Current rating:	6A	6A
●	Wire range:	0.5-0.75 mm ²	
●	Solid wire(AWG):	16-22	
●	Stranded wire(AWG):	16-22	
●	Wire strip length:	8.5-10.0mm	
●	Withstanding Voltage:	1.6KV	2 KV
△●	Operating temperature:	-40°C to +115°C	
●	Soldering temperature:	250°C ±10°C/5 Sec	
●	Safety Approval:	cULus VDE	

PART NO.


HC xx 10 x 0 xxxx G △

Poles	Color	0000 Standard @ Logo
02 2Contacts	2 Red	000A Standard ANY Logo
03 3Contacts	3 Orange	Any special item by
12 12Contacts	5 Gree(RAL6018/T)	customer request,
	8 Grey(RAL7004/P)	please contact sales
		department.

ANYTEK

CUSTOMER COPY

ALL RIGHTS RESERVED. REPRODUCTION OR ISSUE TO THIRD PARTIES IN ANY FORM WHATEVER IS NOT PERMITTED WITHOUT WRITTEN AUTHORITY FROM THE PROPRIETOR. PROPERTY OF ANYTEK TECHNOLOGY CO., LTD

TITLE		HC - 7.0mm Series							
PART NO.		HCxx10x0xxxxG			DWG NO.	8HC0201			
APPROVED	CHECKED	DESIGNED	DRAWN	CUST NO.				Tolerance	
		Runner 2010.12.25	Cheng Bo 2010.06.03					UNIT: mm	
					SCALE: NONE		X.X	±0.30	
							X.XX	±0.10	
				SHEET: 01/01	REV.: G		X°	±1°	

Mouser Electronics

Authorized Distributor

Click to View Pricing, Inventory, Delivery & Lifecycle Information:

[Amphenol:](#)

[HC0210800000G](#) [HC0310800000G](#) [HC0410800000G](#) [HC0510800000G](#) [HC0610800000G](#) [HC0710800000G](#)
[HC0810800000G](#) [HC0910800000G](#) [HC1010800000G](#) [HC1110800000G](#) [HC1210800000G](#)