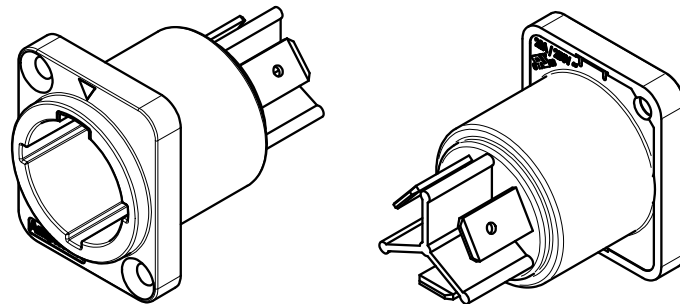
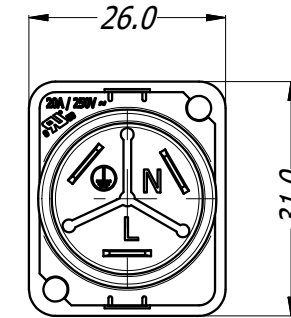
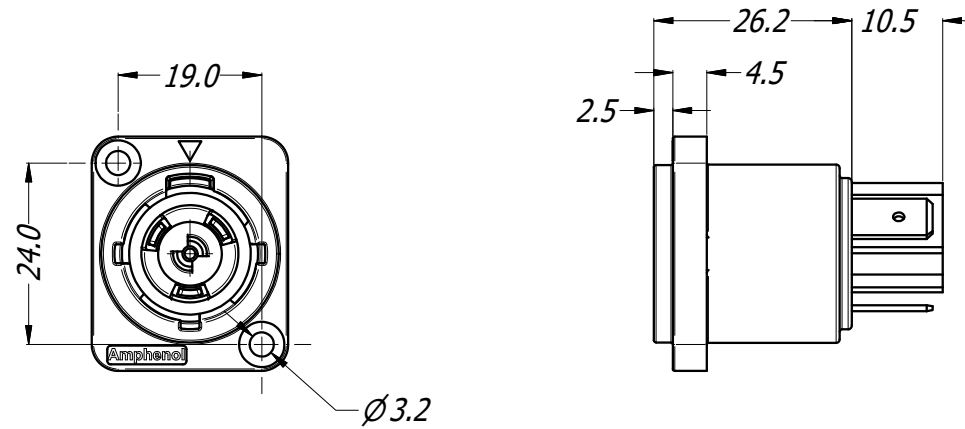
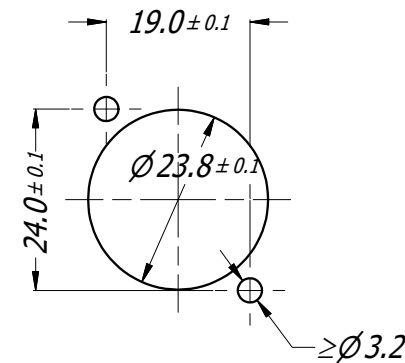


CAUS




3D VIEW
1:1



PANEL CUTOUT

- NOTES:**
- USE SCREW #4 OR M3
 - SCREW TORQUE: 0.4 N-m (3.5 lb-in) MAX

UNLESS OTHERWISE SPECIFIED TOLERANCE TO BE		THIS DOCUMENT IS THE PROPERTY OF AMPHENOL AUSTRALIA PTY. LTD. . NO PART THEREOF MAY BE REPRODUCED AND USED WITHOUT THE PRIOR WRITTEN CONSENT OF THE OWNER.				<div>Amphenol</div> <div>Amphenol Australia Pty.Ltd, 22 Industry Blvd, Carrum Downs VIC 3201</div>			
LINEAR	ANGULAR								
X ±0.5	X' ±1	MATERIAL: REFER COMPONENTS	DRN:	T.N	DATE:	29/08/16	TITLE:	PART No:	REV
X.X ±0.1	X.X' ±30'		CKD:	P.M	DATE:	29/08/16	MALE PANEL MOUNT HP SERIES WITH DIVIDER	HPT-3-MD	1
X.X ±0.05	X.X'X " ±15'		APP'D:	P.M	DATE:	29/08/16		DRAWING No.	SHEET
BREAK ALL SHARP EDGES AND REMOVE ALL BURRS		FINISH:	SCALE: 1:1		SIZE: A4		55011093-000-4		3/4
DO NOT SCALE									
DIMENSIONS IN MILLIMETRES			THIRD ANGLE PROJECTION						

Mouser Electronics

Authorized Distributor

Click to View Pricing, Inventory, Delivery & Lifecycle Information:

[Amphenol:](#)

[HPT-3-MD](#)