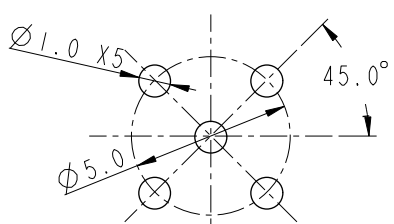
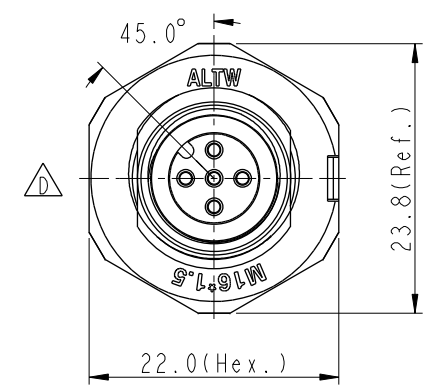
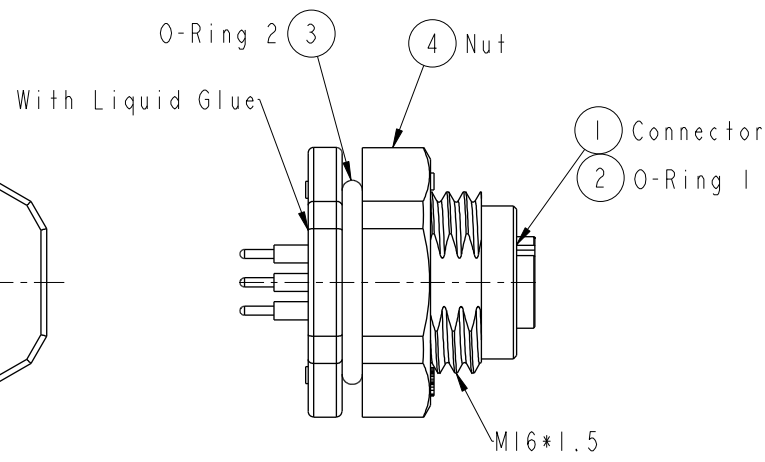


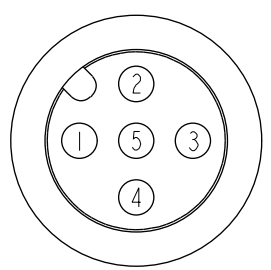
THIS DOCUMENT IS SUBJECT TO CHANGE WITHOUT NOTICE. IT IS CONFIDENTIAL AND A PROPERTY OF Amphenol LTW. DISCLOSURE TO THIRD PARTY HAS TO BE AUTHORIZED BY Amphenol LTW.

REV.	ECN NO.	DATE	SIGN	DESCRIPTION
B	LEN1770182	2017/07/03	Frank Deng	Change Note
C	CI90517	2019/04/09	Vicky	Change Note & Tolerance
D	CI90804	2019/05/22	Vicky	Update View

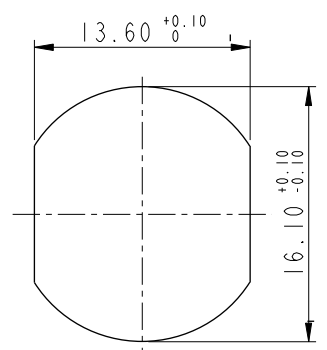
ALTW
CONFIDENTIAL
2019-05-22
R&D DEPT.



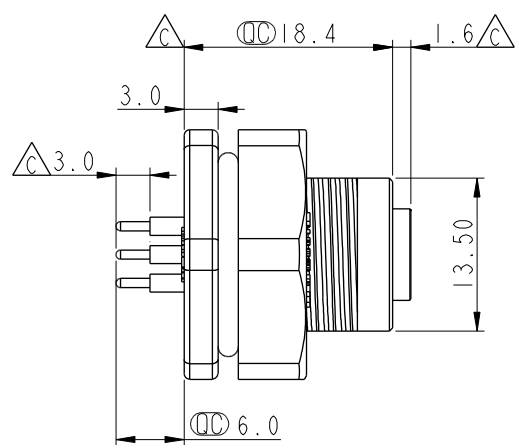
PCB Layout



Pin Assignment
Front View



Recommended Panel Cut-Out



Note:

- * Important Dimension To Check.
- * Waterproof Rate: IP68, Unmated.
In 1 meter water within 24 hours
- * Connector: Thermoplastic, Black.
- * Pin: Copper Alloy, Gold Plated.
- * Shield: Thermoplastic, Black.
- * Nut: Thermoplastic, Black.
- * O-Ring 1: Rubber, Gray.
- * O-Ring 2: Rubber, Gray.
- * For Panel Thickness Max 4.9mm
- * Nut are packed separately in PE bags.

UNIT:mm		TITLE		NMEA2000 Micro-C Female Conn. PCB Type, Plastic Nut		Amphenol LTW		ITEM NO		DRAWN BY		DATE	
TOLERANCE		SCALE		SIZE		SHEET		DWG NO		CHECKED BY		DATE	
.X ±0.25		3:2		A4		1		HPC-05PFFP-SF8001		Vicky		2019-05-22	
.XX ±0.1		REV.		WC-REV.		OF		HPC-05PFFP-SF8001		Rita		2019-05-22	
.XXX ±0.05		D		A.4		1		CUSTOMER		APPROVED BY		DATE	
ANGLES ±1°								ALTW		Max		2019-05-22	

安費諾亮泰企業股份有限公司

Mouser Electronics

Authorized Distributor

Click to View Pricing, Inventory, Delivery & Lifecycle Information:

[Amphenol:](#)

[HPC-05PFFP-SF8001](#)