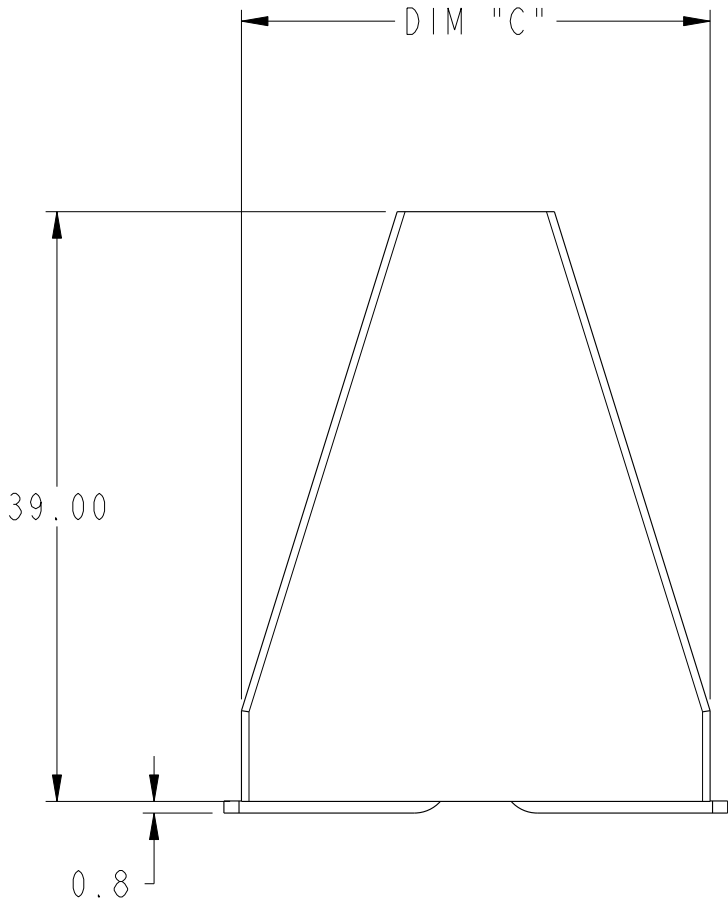
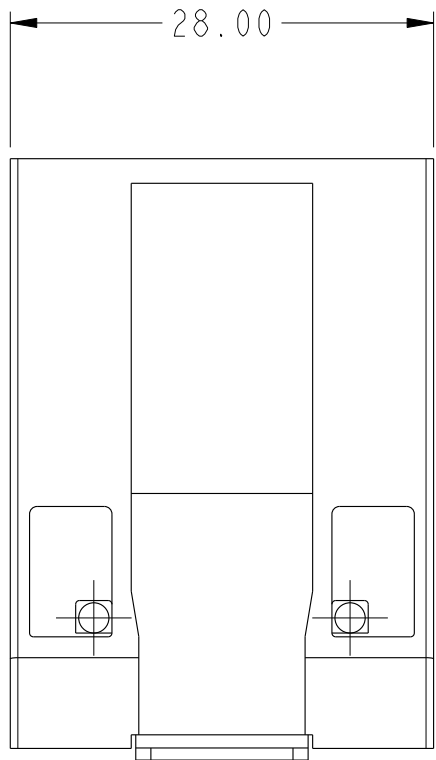
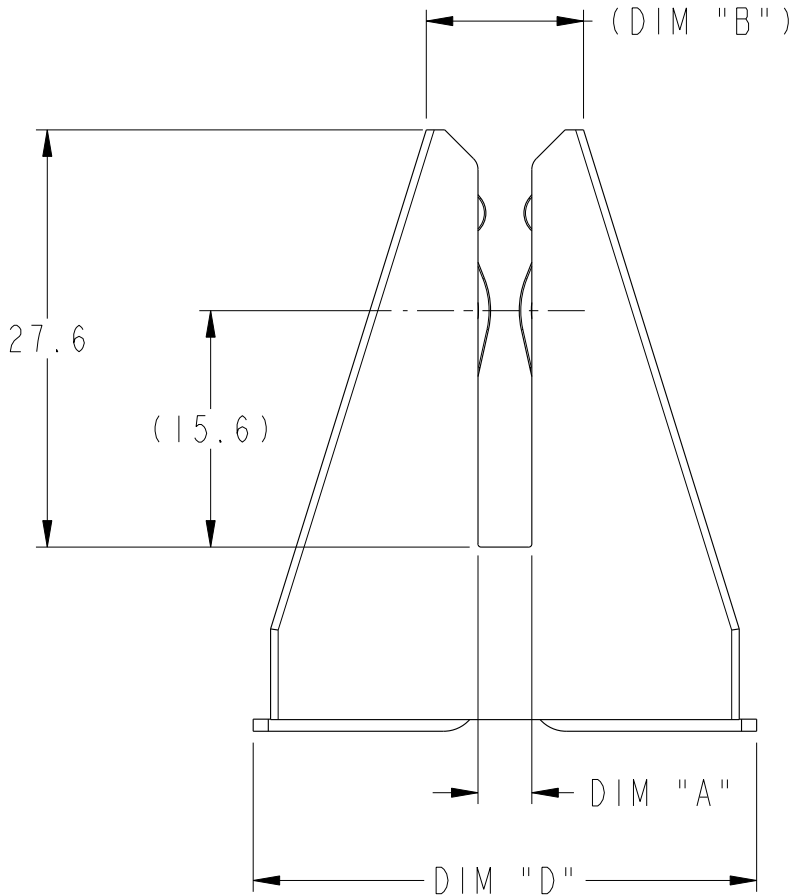


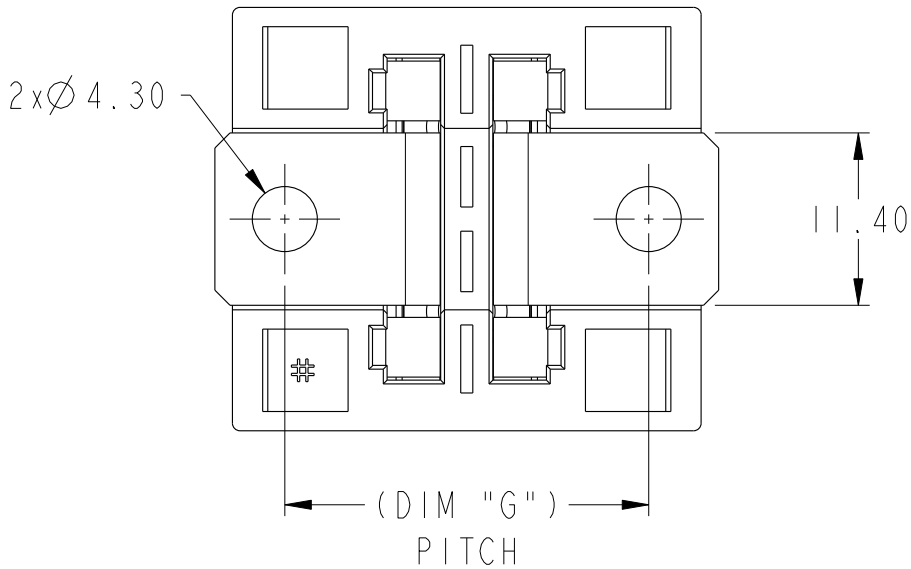
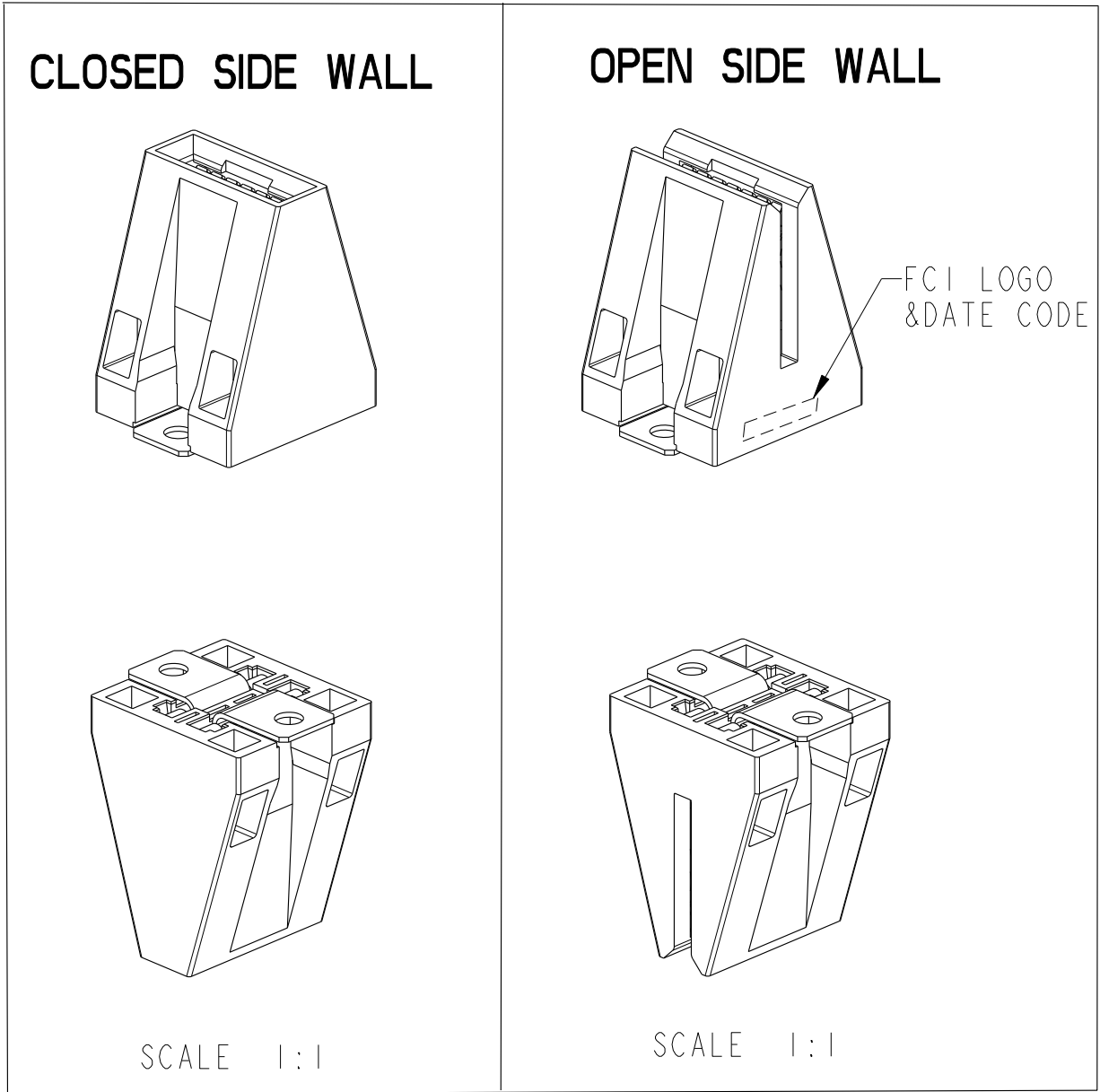
1		2		3		4	5	6	7	8
PRODUCT NUMBER		ASSEMBLY TYPE	DIM "A"	DIM "B"	DIM "C"	DIM "D"	DIM "G" PITCH	MATING BUS-BAR THICKNESS DIM "H" ±0.10		
A	10134620-001LF	OPEN SIDE WALL	2.56	9.4	30.0	32.3	23.0	2.00		
	10134620-002LF		3.56	10.4	31.0	33.3	24.0	3.00		
	10134620-003LF		4.56	11.4	32.0	34.3	25.0	4.00		
—	10134620-004LF	CLOSED SIDE WALL	2.56	9.4	30.0	32.3	23.0	2.00		
	10134620-005LF		3.56	10.4	31.0	33.3	24.0	3.00		
	10134620-006LF		4.56	11.4	32.0	34.3	25.0	4.00		

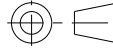




CLOSED SIDE WALL

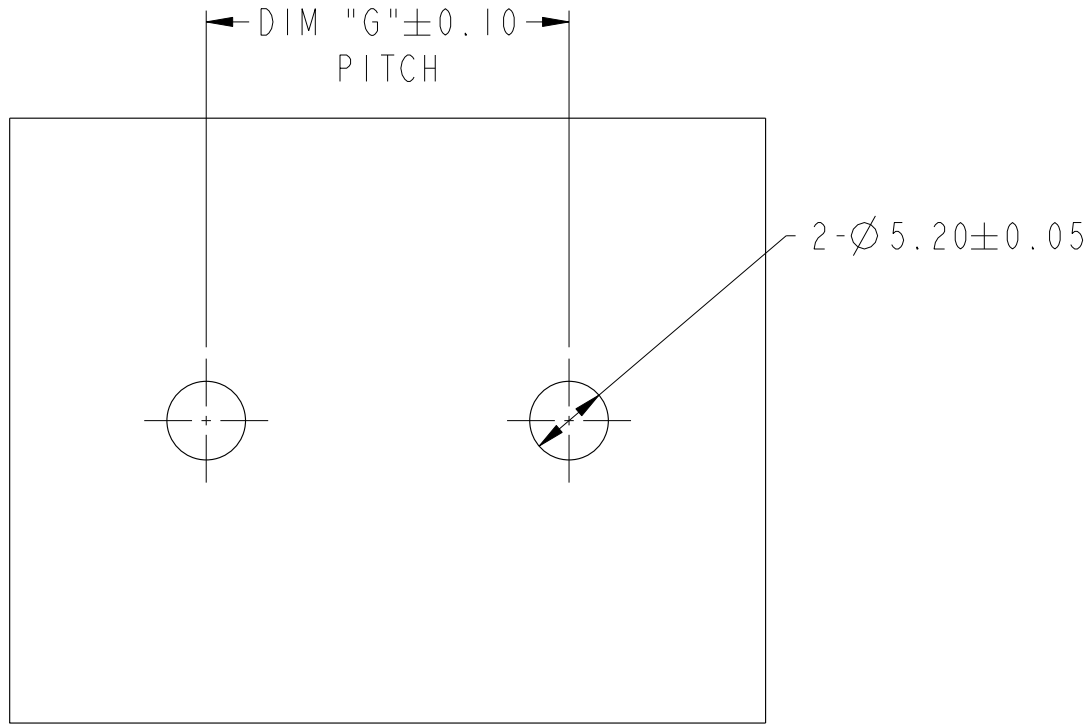
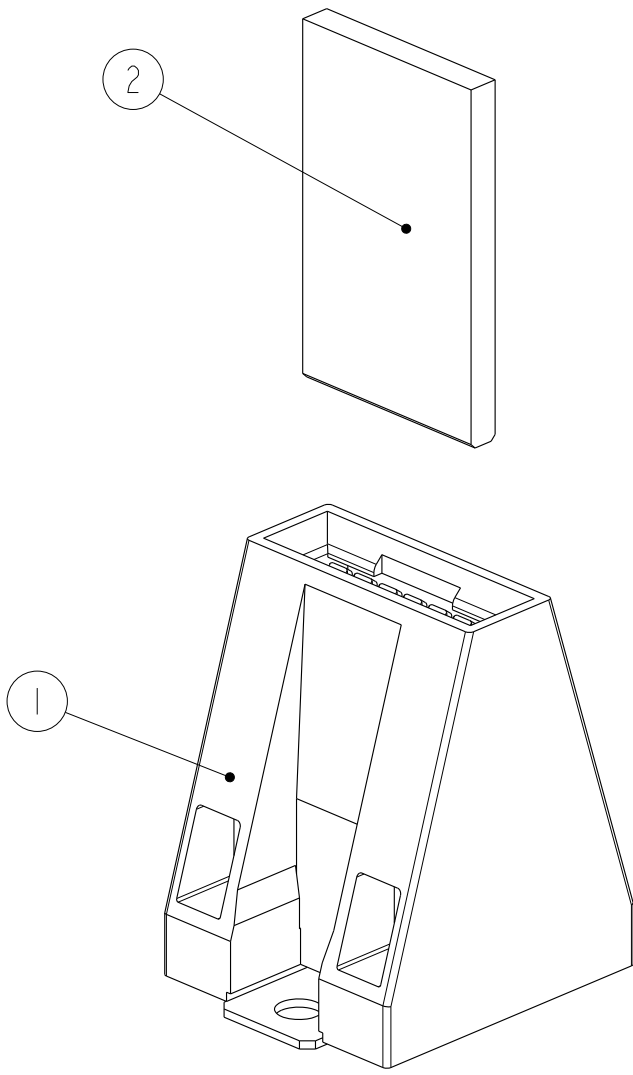


OPEN SIDE WALL

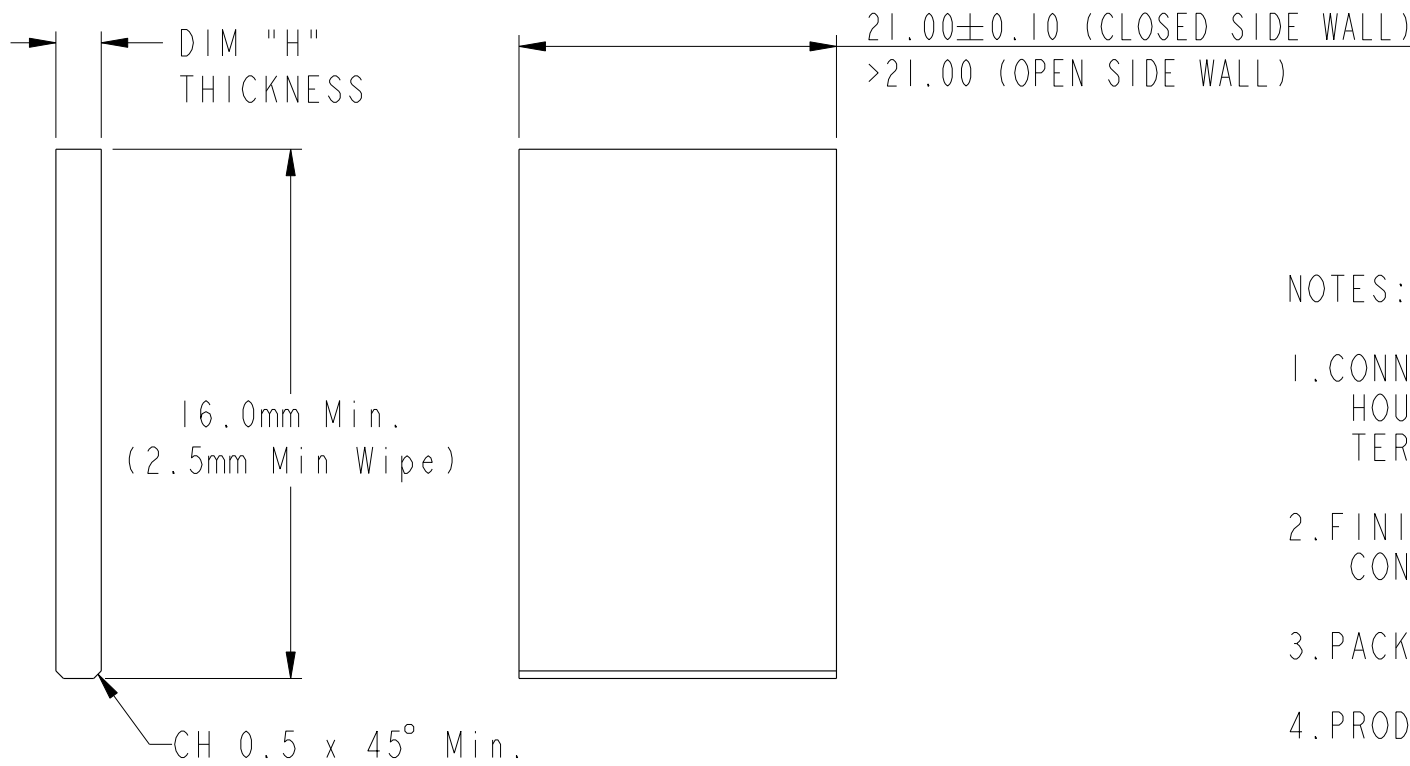
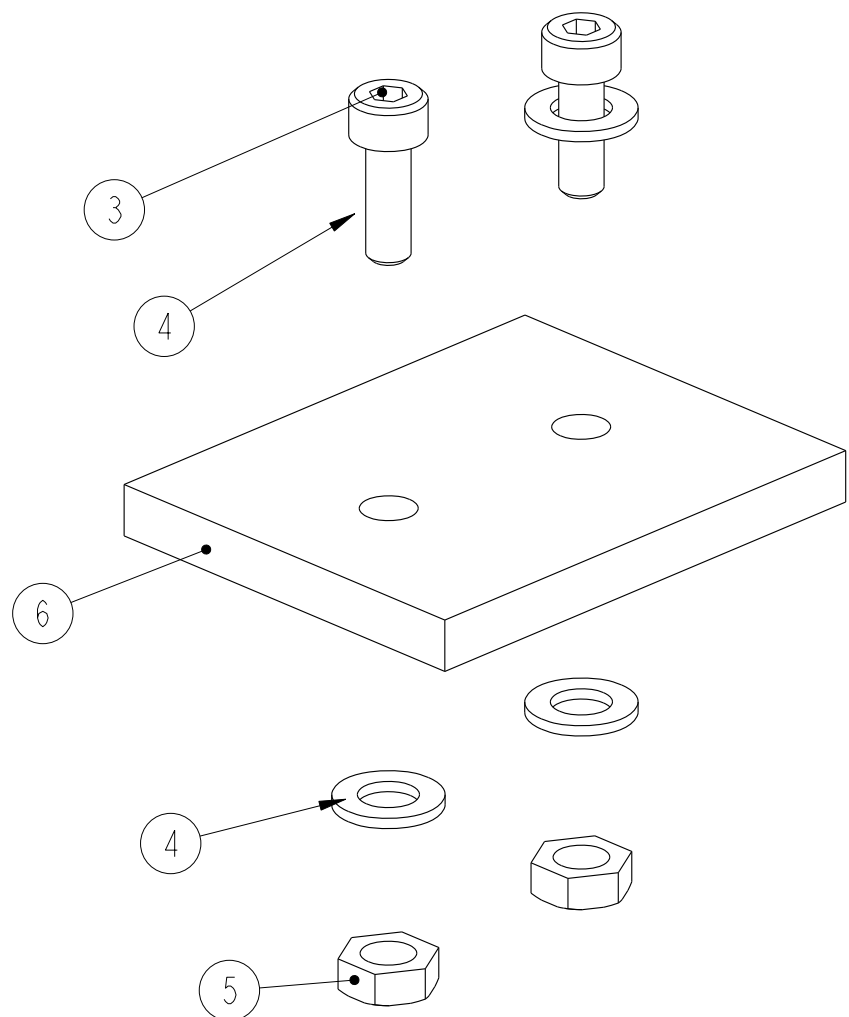


spec ref -				dr Terris Liu		2015/12/08		projection		mm		size A2		scale 2:1	
tolerance std -				eng Terris Liu		2016/07/22						ecn no -		rel level Preliminary	
ASME Y14.5M				chr -		-									
				appr -				product family -							
surface 		linear		Amphenol FCI		title BarKlip VERTICAL ASSEMBLY CLOSED SLOT TYPE		dwg no 10134620		rev 1					
		0.X ±0.50													
		0.XX ±0.30													
ASME Y14.5M		angular 0° ±2°		www.fci.com		cat. no. -		Product - Customer Drw				sheet 1 of 2			

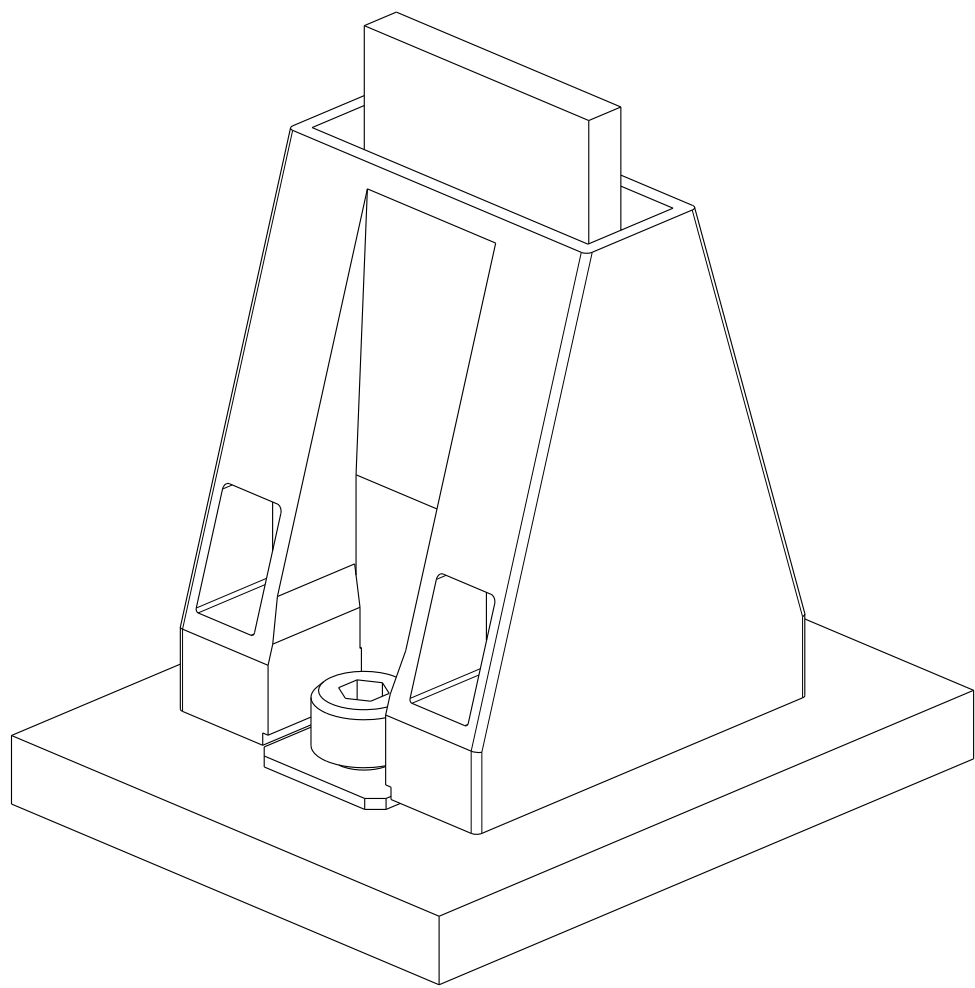
S.NO	DESCRIPTION	QTY	REMARKS
1	Product	1	OPEN / CLOSED SIDE WALL
2	MATING BUS-BAR	1	PLATING RECOMMENDATION:3 um Silver over 2.54 um Nickel
3	M4 SCREW	2	
4	M4 WASHER	4	
5	M4 NUT	2	
6	MOUNTING BUS-BAR	1	PLATING RECOMMENDATION:3 um Silver over 2.54 um Nickel



SCALE 2:1
RECOMMENDED MOUNTING BUS-BAR
THICKNESS 5.00 MAX.

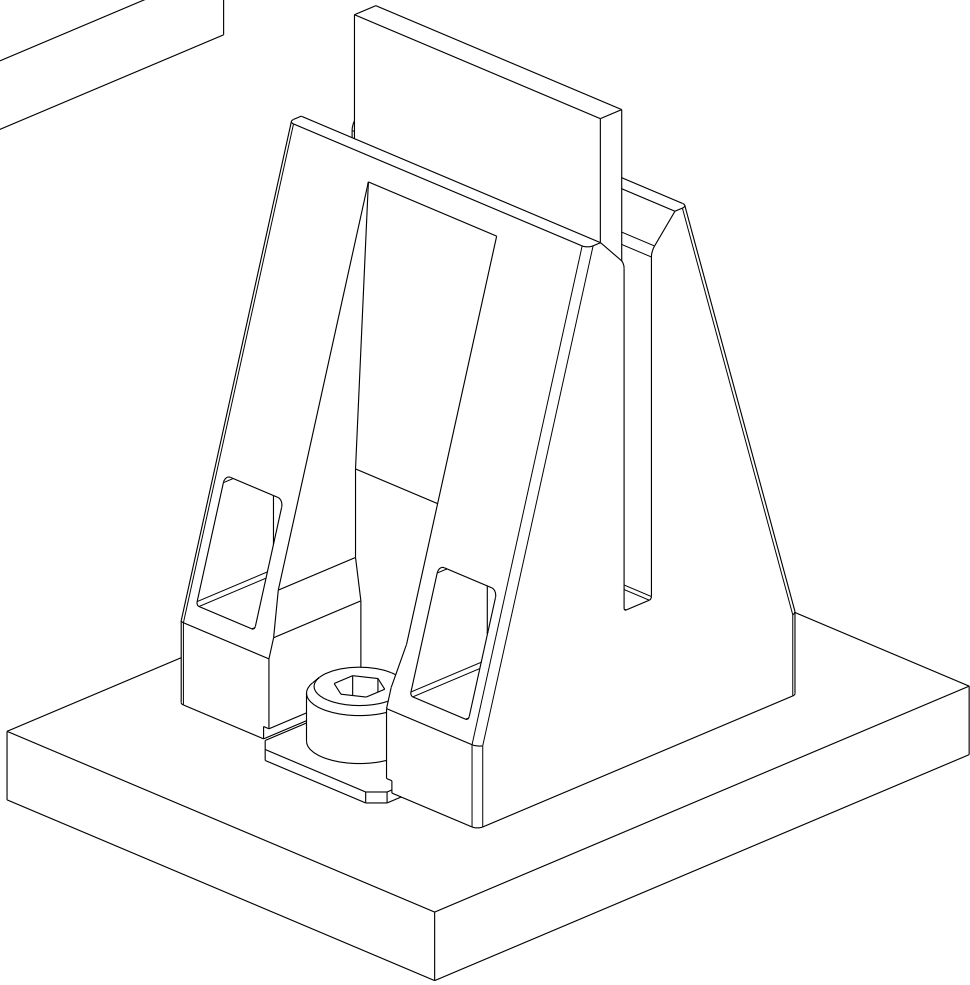


SCALE 2:1
RECOMMENDED MATING BUS-BAR



CLOSED SIDE WALL

MATED WITH BUS-BAR VIEW



OPEN SIDE WALL

NOTES:

- CONNECTOR MATERIAL:
HOUSING: HIGH TEMPERATURE THERMOPLASTIC GLASS FILLED, Black,UL 94V-0
TERMINALS: COPPER ALLOY
- FINISHES:
CONTACT AREA:PLATED AGT OVER NICKEL I
- PACKING SPECIFICATION: GS-14-2376
- PRODUCT SPECIFICATION: GS-12-1319
- PRODUCT APPLICATION: GS-20-0446
- LEAD FREE PRODUCTS MEET EUROPEAN UNION DIRECTIVES
AND OTHER COUNTRY REGULATIONS AS DESCRIBED IN GS-47-0004.

spec ref	-	dr	Terris Liu	2015/12/08	projection	mm	size	A2	scale	2:1
tolerance std	-	eng	Terris Liu	2016/07/22			ecn no	-		
ASME Y14.5M	TOLERANCES UNLESS OTHERWISE SPECIFIED	chr	-	-			rel level	Preliminary		
		appr	-	-	product family	-				
surface	✓	linear	0.X	±0.50	Amphenol FCI	BarKlip VERTICAL ASSEMBLY	dwg no	10134620	rev	1
ASME Y14.5M	angular	0°	±2°	www.fci.com	cat. no.	-	Product - Customer Drw	sheet 2 of 2		

Mouser Electronics

Authorized Distributor

Click to View Pricing, Inventory, Delivery & Lifecycle Information:

[FCI / Amphenol:](#)

[10134620-002LF](#) [10134620-005LF](#) [10134620-001LF](#) [10134620-006LF](#) [10134620-003LF](#) [10134620-004LF](#)