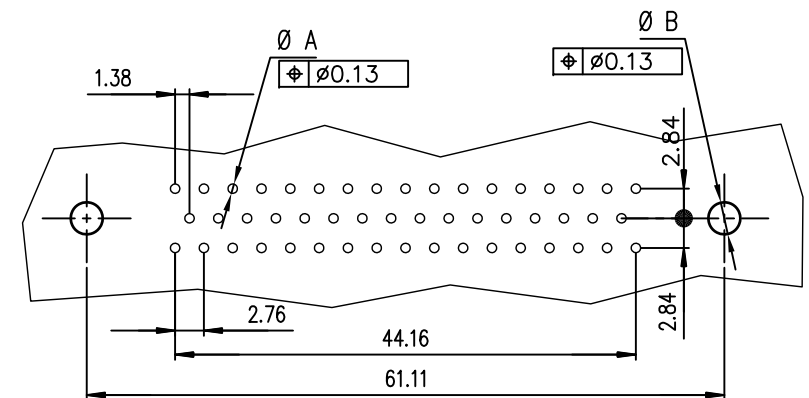
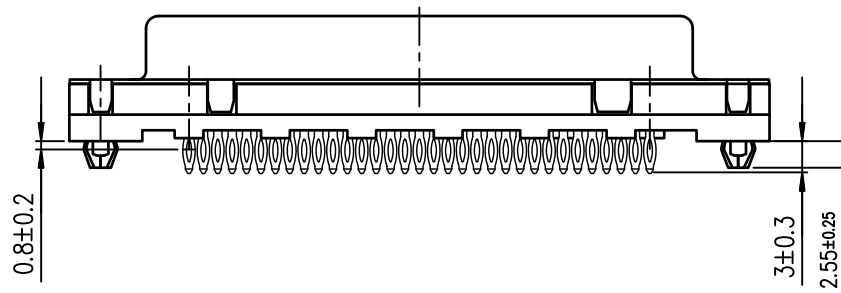



PC board drilling dimensions
(after plating – thickness: 1.60 to 3.20 mm)



ROHS PART NUMBER

PART NUMBER	
200 Mating	D50S91C4GL00LF
500 Mating	D50S91C6GL00LF

GENERAL CHARACTERISTICS AND ROHS INFORMATION:
SEE DRAWING C01-8646-0001

mat'l. code				surface ISO 1302 ✓		tolerance ISO 406 ISO 1101		projection 		product family D-SUB			
ltr		ecn no		dr		date		tolerances unless otherwise specified				title	
F		ELX-I-21654		AB		2015-10-26		angles		linear		.0±0.1	
G		ELX-I-24020		AAB		2016-06-06		0°±2°				.00±0.1	
												.00±0.1	
										scale 2:1		FEMALE DELTA-D 50 EUROPE STRAIGHT PRESS-FIT	
								dr		PESSON		1995-10-03	
								engr		MITHUN PAUL		2016-06-06	
								chr		ATHUL A.B		2016-06-06	
								appd		BIJU K PAUL		2016-06-06	
sheet index		revision sheet		G		1							

Mouser Electronics

Authorized Distributor

Click to View Pricing, Inventory, Delivery & Lifecycle Information:

[Amphenol:](#)

[D50S91C4GL00LF](#)