



Copyright FCI.

PRODUCT NO.
73725

PRODUCT NUMBER CODE

- 73725-X X X X LF
- HOUSING COLOR OPTION
0-WHITE
1-BLACK
- SENSOR CONTACT OPTION
0-WITH SENSOR CONTACT
1-WITHOUT SENSOR CONTACT
- SHIELD PLATING OPTION
1- 1.25µm MINIMUM NICKEL UNDERPLATE & 2.5µm MINIMUM BRIGHT TIN PLATED OVER ALL. (HOLD DOWN STYLE "A")
2- 1.25µm MINIMUM NICKEL UNDERPLATED OVER ALL; 2.5 µm MINIMUM BRIGHT TIN PLATED ON HOLD DOWN AREA ONLY. (HOLD DOWN STYLE "B")
3- 1.25µm MINIMUM NICKEL UNDERPLATED OVER ALL; 2.5 µm MINIMUM BRIGHT TIN PLATED ON HOLD DOWN AREA ONLY. (HOLD DOWN STYLE "A")
4- 1.25µm MINIMUM NICKEL UNDERPLATED & 2.5µm MINIMUM BRIGHT TIN OVER ALL AREA. (HOLD DOWN STYLE "B")
5- 1.25µm MINIMUM NICKEL UNDERPLATED OVER ALL; 2.5µm MINIMUM BRIGHT TIN PLATED ON HOLD DOWN AREA ONLY. (HOLD DOWN STYLE "C")
6- 1.25µm MINIMUM NICKEL ONLY. (HOLD DOWN STYLE "A")
7- 1.25µm MINIMUM NICKEL UNDERPLATED & 2.5 µm MINIMUM MATTE TIN PLATED OVER ALL. (HOLD DOWN STYLE "A")
8- 1.25µm MINIMUM NICKEL UNDERPLATED & 2.5 µm MINIMUM MATTE TIN PLATED ALL AREA. (HOLD DOWN STYLE "B")
9- 1.25µm MINIMUM NICKEL UNDERPLATED OVER ALL; 2.5 µm MINIMUM MATTE TIN PLATED ON HOLD DOWN AREA ONLY. (HOLD DOWN STYLE "D")
S- 1.25µm MINIMUM NICKEL ONLY; (HOLD DOWN STYLE "A"). HIGH PERFORMANCE MATERIAL FOR 12,000 DURABILITY CYCLES
A- 1.25µm MINIMUM NICKEL PLATED OVER ALL. 2.5 µm MINIMUM MATTE TIN PLATED ON HOLD DOWN AREA ONLY. (HOLD DOWN STYLE "B")
- LEAD FREE OPTION
SEE NOTE 9
- PACKAGING OPTION
B - TUBE
R - TAPE&REEL

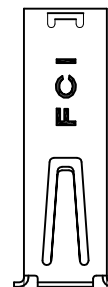
TERMINAL OPTION

50u" NI UNDERPLATE; 30u" GXT CONTACT AREA, 100u" TIN TAIL AREA;

- 0- DIM "A": 2.29 (TERMINAL TAIL LENGTH);
1- DIM "A": 3.71 (TERMINAL TAIL LENGTH);

NOTES:

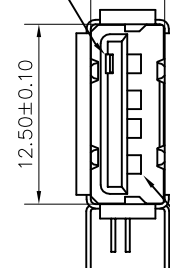
- MATERIAL:
CONTACTS: COPPER ALLOY
SHIELD: COPPER ALLOY
HOUSING: UL 94V-0 THERMOPLASTIC, COLOR: SEE PRODUCT CODE
- PLATING:
CONTACTS: GOLD FLASH OVER PALLADIUM NICKEL (0.76µm MINIMUM) IN CONTACT AREA; 2.5 µm TIN MINIMUM IN SOLDER TAIL AREA.
1.27 µm MINIMUM NICKEL UNDERPLATE OVER ALL SURFACES.
SHIELD: SEE PRODUCT NUMBER CODE.
(THE PLATING MEASURE POINT ON THE SHIELD HOLD DOWN AREA ONLY).
- DATUMS & BASIC DIMENSIONS TO BE DETERMINED BY CUSTOMER
- RECOMMENDED PCB BOARD THICKNESS IS 1.00 ~ 1.60mm EXCEPT 73725-1191BLF; 73725-1191BLF CAN BE USED FOR THE PCB BOARD THICKNESS 2.30 ~ 2.65mm.
- MAXIMUM PANEL THICKNESS TO BE 2.67mm IF MOUNTED BEHIND PANEL
- METAL SHELL SLIVER 0.20 MAX.
- NI PLATING DOES NOT COMPLY WITH THE USB STANDARDS (TO BE CONTINUED)



5.76

5.12±0.10

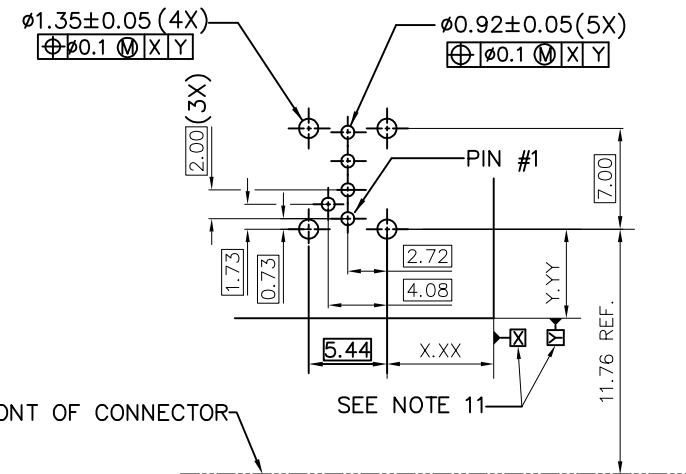
SENSOR CONTACT



12.50±0.10

POS. #1

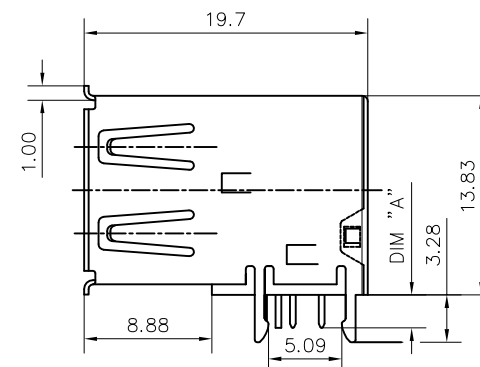
WITH SENSOR CONTACT



FRONT OF CONNECTOR

SEE NOTE 11

PC BOARD MOUNTING DIMENSIONS FOR 5 PIN



FOR 73725-X0X0B
HOLD DOWN STYLE "A"

mat'l code				tolerance unless otherwise specified		CUSTOMER COPY		FCI	
rev.	ecn no.	dr	date	linear	.0 ± .30	projection	title	www.fciconnect.com	
AB	N09-0202	R.B	2009/06/25		.00 ± .20		USB UP-RIGHT RECEPT		
AC	N10-0128	A.ZH	05/14/2010		.000± 0.10				
AD	ELX-N-14592	A.ZH	06/25/2012	angles	± 2°				
AE	ELX-N-13462	A.ZH	11/14/2012	dr	PAMP	5/20/97	unit	product family USB	code
AF	ELX-N-14592	J.HAN	06/10/2013	enrg	R Y LIU	5/20/97	mm	size	NT
AG	ELX-N-21594	LQ	06/04/2015	chr	R Y LIU	5/20/97	scale	dwg no.	sheet
				appd	JENN TSAO	5/20/97		73725	1 OF 4
sheet revision AG									
index sheet 1-4									

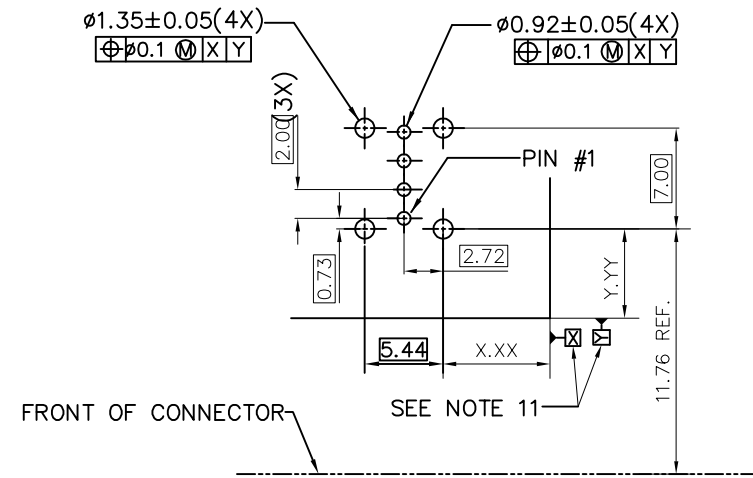
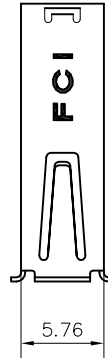


Copyright FCI.

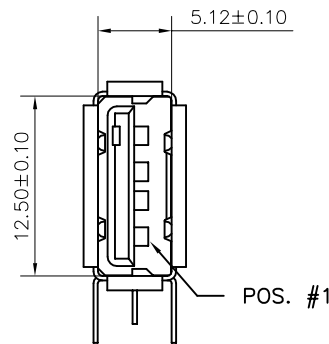
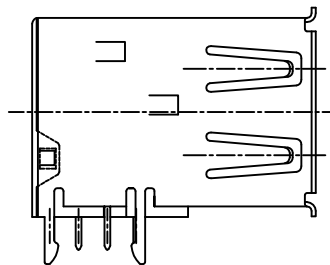
PRODUCT NO.
73725

(CONTINUED)

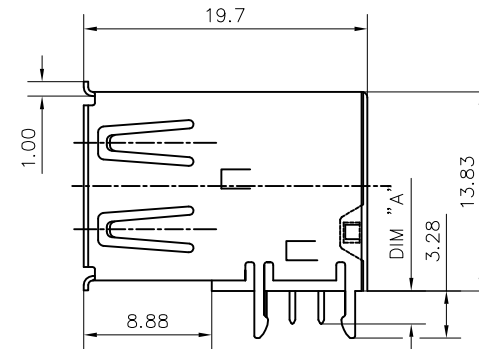
8. P/N'S WITH SUFFIX "LF" ARE LEAD FREE P/N'S
9. FOR LEAD FREE P/N, THE PRODUCT MEET EUROPEAN UNION DIRECTIVES AND OTHER COUNTRY REGULATION AS DESCRIBED IN GS-22-008
10. FOR THE PRODUCTS WITH THE METAL SHELL PLATING NICKEL AND MATTE SN CAN WITHSTAND EXPOSURE TO 260°C PEAK TEMPERATURE FOR 40 SECONDS IN A CONVECTION, INFRA-RED OR VAPOR PHASE REFLOW PROCESS; FOR THE PRODUCTS WITH METAL SHELL PLATING BRIGHT SN OR SEMI-BRIGHT SN CAN'T WITHSTAND REFLOW AND JUST CAN WITHSTAND EXPOSURE TO 260°C PEAK TEMPERATURE FOR 10 SECONDS IN WAVE SOLDERING PROCESS.
11. FOR ALL LEAD FREE P/N'S, WITH SUFFIX LF.
12. THE PRODUCT CAN BE USED FOR PIP PROCESS
13. DATUM OF CUSTOMER'S PCB LAYOUT.



PC BOARD MOUNTING DIMENSIONS FOR 4 PIN

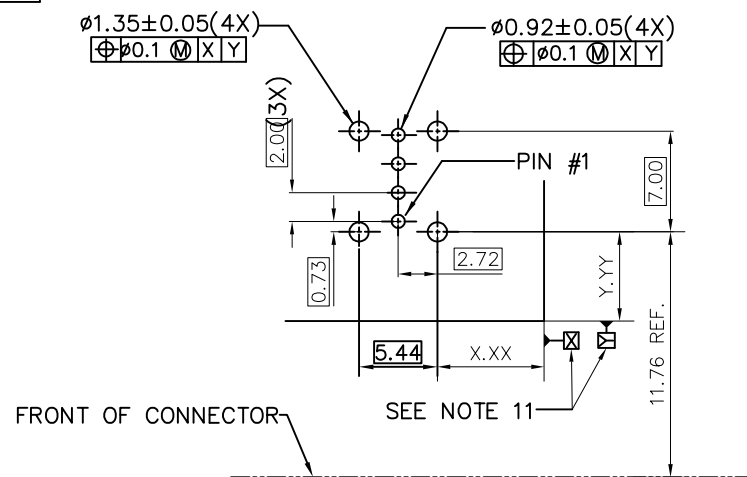


WITHOUT SENSOR CONTACT

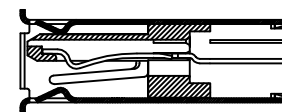


FOR 73725-X1X0B

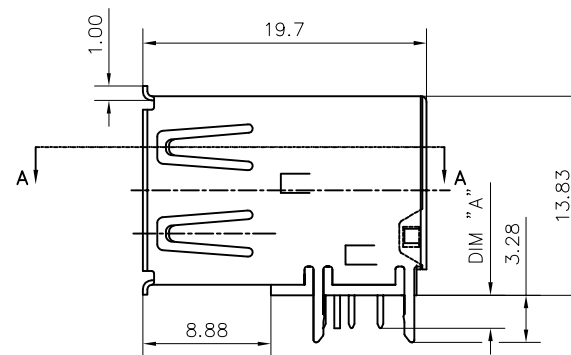
mat'l code				tolerance unless otherwise specified		CUSTOMER COPY		FCI	
rev.	ecn	no.	dr	date	linear	.0 ± .30	projection	title USB UP-RIGHT RECEPT	
AG						.00 ± .20			
						.000± 0.10		product family USB	
					angles	± 2°			
			dr	PETER PAM	9/4/97	unit	mm	size	
			enr	R Y LIU	9/4/97	scale	A3		
			chr	R Y LIU	9/4/97			73725	
			appd	JENN TSAO	9/4/97				
sheet	revision							2 OF 4	
index	sheet								



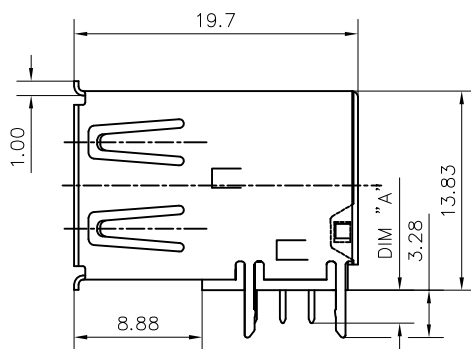
PC BOARD MOUNTING DIMENSIONS FOR 4 PIN



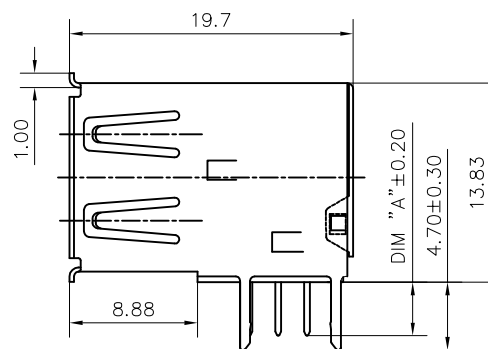
SECTION A-A



WITH SENSOR CONTACT
FOR 73725-X0X0B
HOLD DOWN STYLE "B"



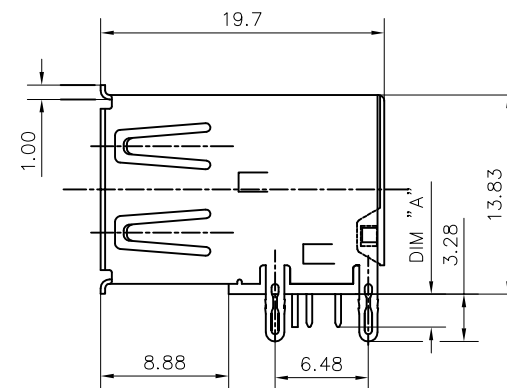
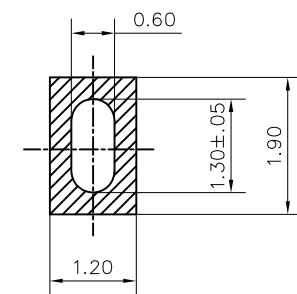
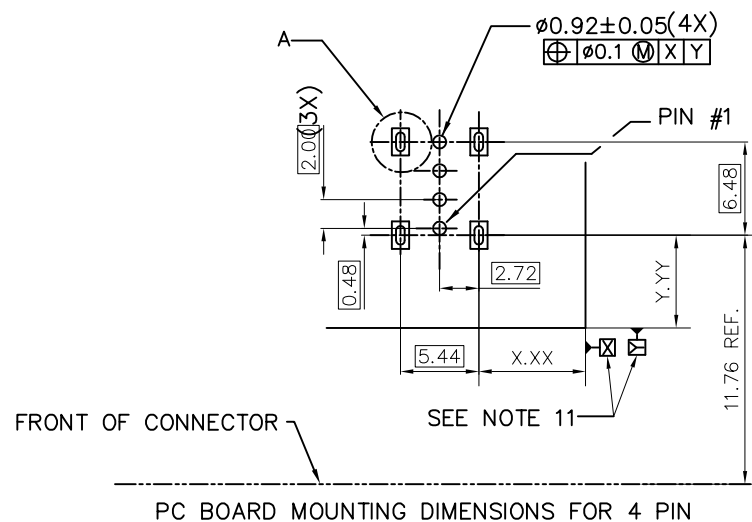
WITHOUT SENSOR CONTACT
FOR 73725-X1X0B
HOLD DOWN STYLE "B"



WITHOUT SENSOR CONTACT
FOR 73725-X191XLF
HOLD DOWN STYLE "D"

[illegible]

PRODUCT NO.
73725



WITHOUT SENSOR CONTACT
FOR 73725-X1X0B
HOLD DOWN STYLE "C"

mat'l code				tolerance unless otherwise specified		CUSTOMER COPY		FCI www.fciconnect.com	
rev.	ecn	no.	dr	date	linear	.0 ± .30	projection	title USB UP-RIGHT RECEPT	
AG						.00 ± .20			
					angles	.000± 0.10		product family USB	
						± 2°			
			dr	PETER	01/12/99	unit		size	
			enr	R Y LIU	01/12/99	mm			
			chr	R Y LIU	01/12/99	scale		dwg no.	
			appd	JENN TSAO	01/12/99				
sheet revision								73725	
index	sheet								
								code NT	
								sheet 4 OF 4	

Mouser Electronics

Authorized Distributor

Click to View Pricing, Inventory, Delivery & Lifecycle Information:

FCI / Amphenol:

[73725-1120BLF](#) [73725-1180BLF](#) [73725-0110BLF](#) [73725-0180BLF](#) [73725-0010BLF](#) [73725-1110BLF](#) [73725-1130BLF](#) [73725-1191BLF](#) [73725-1030BLF](#) [73725-0110RLF](#) [73725-01A0BLF](#) [73725-11A0BLF](#) [73725-0180RLF](#) [73725-0191BLF](#) [73725-1191RLF](#) [73725-1180RLF](#) [73725-11A0RLF](#) [73725-01A0RLF](#) [73725-1190BLF](#) [73725-1190RLF](#) [73725-1121BLF](#) [73725-1181RLF](#) [73725-0111BLF](#) [73725-1110RLF](#)