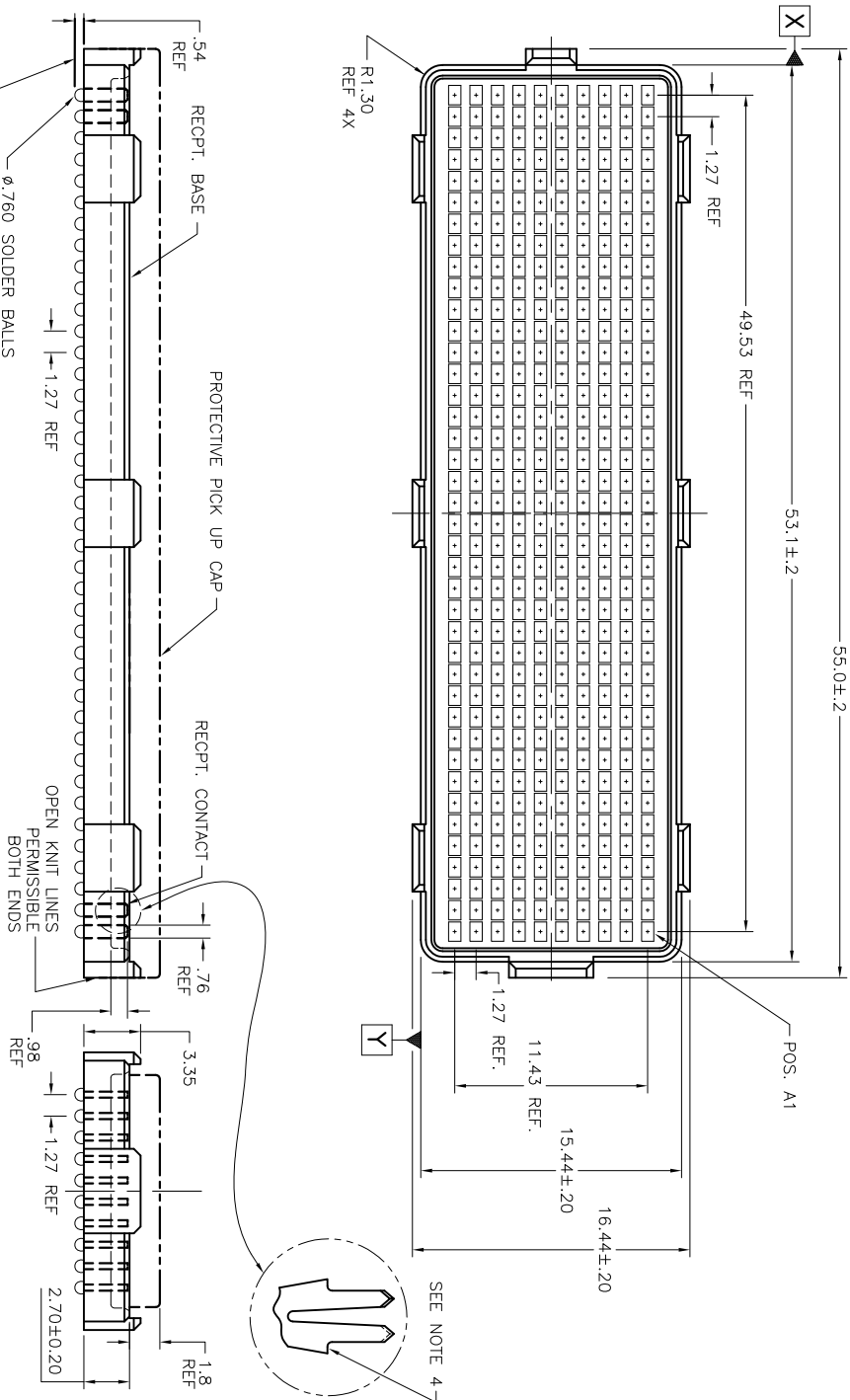


PRODUCT NUMBER  
SEE TABLE-SHEET 3

1 2

3

4



NOTE 2.  
Ø .760 SOLDER BALLS  
Ø .30 X Y

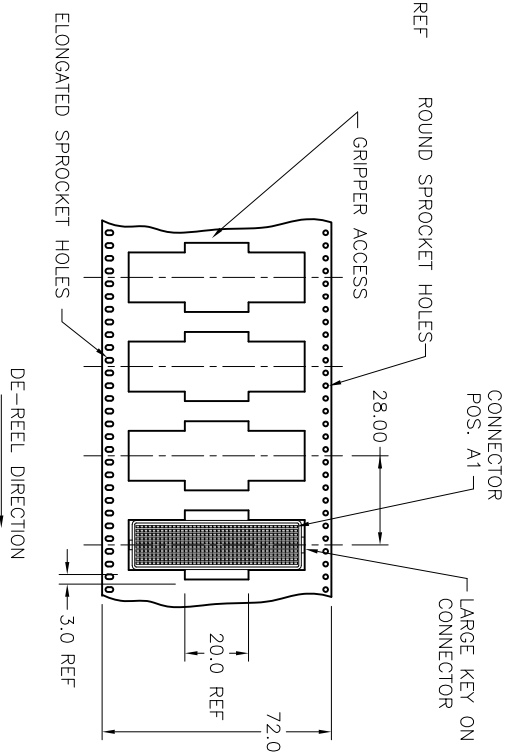
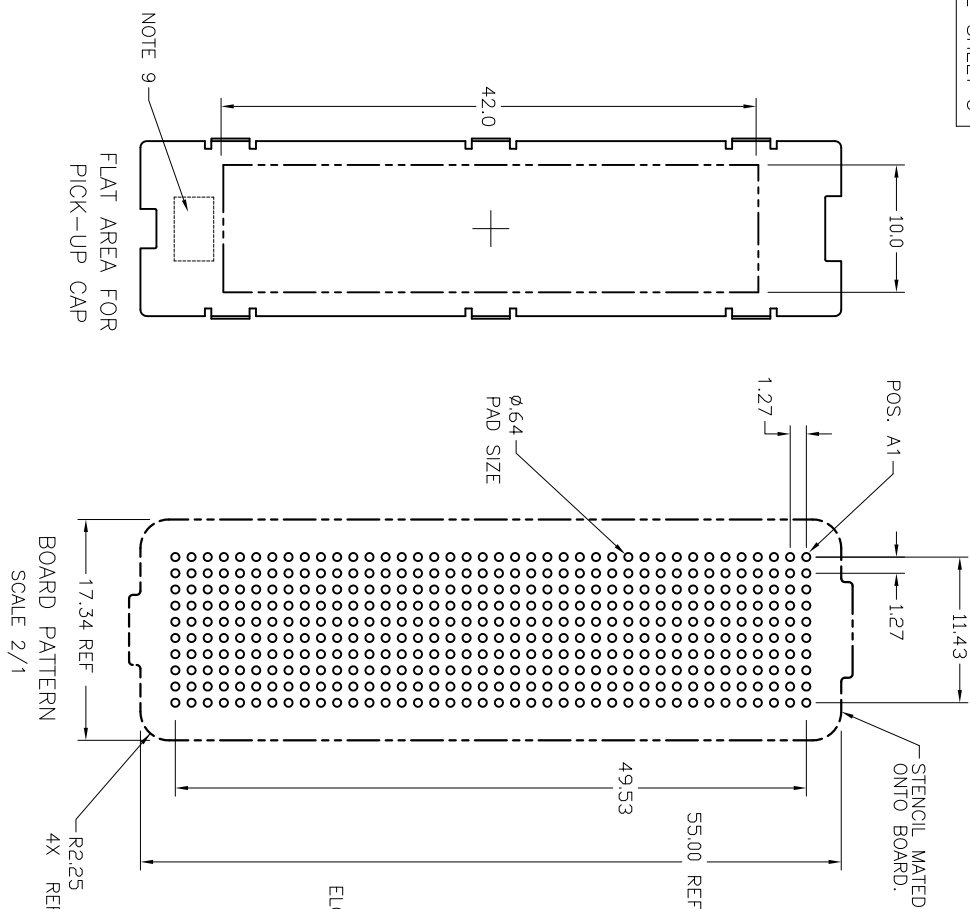
.203

mat'l. code		surface		tolerance		projection		product family	
litr	ecm no.	dfr	date	ASPE Y14.5	ASPE Y14.5	ASPE Y14.5	ASPE Y14.5	MEG-ARRAY	title
N	V06-0560	LP	2006-07-08	angles	XXX.13	XXX.13	XXX.13	4mm	4mm RECEPTACLE ASSEMBLY
P	V-004083	HTB	2010-06-13	or ±2°	XXX.051	XXX.051	XXX.051	10 X 40	10 X 40 = 400 POSITIONS
R	V012300	DCH	2012-06-11	D. WUJCHEN	1997-11-26	1997-11-26	1997-11-26	Scale: 3:1	
S	V-13457	DCH	2012-11-15	D. WUJCHEN	1997-11-26	1997-11-26	1997-11-26		
T	V-22253	RWB	2015-10-20	ENGJ	T. LEMKE	1997-11-26	1997-11-26		
-	-	-	-	CTR	T. LEMKE	1997-11-26	1997-11-26		
M	V05-1071	DAI	2005-12-21	QDDJ	T. LEMKE	1997-11-26	1997-11-26		
Sheet	revision	T	T	T	T				
Index	Sheet	1	2	3	4				

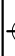


74221

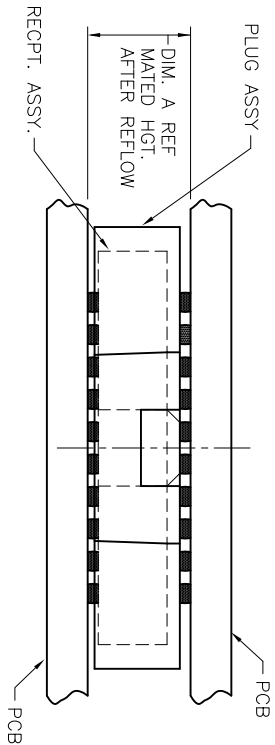
A4



TAPE & REEL PACKAGING SCALE NONE  
PER EIA 481-3

mat'l. code		surface		tolerance		projection	
SEE NOTE 1		ASME Y4.5 ✓		ASME Y4.5			
lbr	ecrn no	lbr	date	tolerances unless otherwise specified			
T		angles		$\times 1.3$			
		lines		$\times 1.3$			
		$\phi \pm .1$		$\times 1.3$			
				Scale 2:1			
		lbr	D. WALSHEN	1997-11-26			
		lbr	T. LEMKE	1997-11-26			
		lbr	T. LEMKE	1997-11-26			
		lbr	T. LEMKE	1997-11-26			
sheet index	revision						
	sheet						

PRODUCT NUMBER	PICK-UP CAP	CONTACT PLATING	SOLDER BALL	NOTES
74221-001	YES	15µ" (.38µm) Au	SnPb	
74221-001LF	YES		SnAgCu LEAD FREE	7
74221-091	YES	15µ" (.38µm) GXT	SnPb	
74221-091LF	YES		SnAgCu LEAD FREE	7
74221-101	YES	30µ" (.76µm) Au	SnPb	
74221-101LF	YES		SnAgCu LEAD FREE	7
74221-191	YES	30µ" (.76µm) GXT	SnPb	
74221-191LF	YES		SnAgCu LEAD FREE	7
74221-201	YES	Au SPECIAL	SnPb	5
74221-201LF	YES		SnAgCu LEAD FREE	5 AND 7
74221-291	YES	GXT SPECIAL	SnPb	5
74221-291LF	YES		SnAgCu LEAD FREE	5 AND 7
74221-A01	YES	30µ" (.76µm) Au SPECIAL	SnPb	8
74221-A01LF	YES		SnAgCu LEAD FREE	8 AND 7
74221-301	YES	15µ" (.38µm) SPECIAL	SnPb	8
74221-301LF	YES	15µ" (.38µm) SPECIAL	SnAgCu LEAD FREE	7 AND 8
74221-401	YES	30µ" (.76µm) SPECIAL	SnPb	8
74221-401LF	YES	30µ" (.76µm) SPECIAL	SnAgCu LEAD FREE	7 AND 8
74221-501	YES	SPECIAL	SnPb	5 AND 8
74221-501LF	YES	SPECIAL	SnAgCu LEAD FREE	5, 7, 8



MATED HEIGHT TABLE			
DIM. A	PLUG ASSY P/N	RECEPT. ASSY P/N	
4.0	84740	74221	
10.0	84520	74221	

MATED HEIGHT AFTER REFLOW IS BASED ON Ø .064mm PAD (METAL-DEFINED) AND .13mm SOLDER PASTE STENCIL THICKNESS. SEE NOTE 3.  
END VIEW - MATED CONNECTORS SCALE NONE

mat'l. code	SEE NOTE 1	surface	tolerance	projection	product family
lit	ecm no	dfr	date	ASPC Y14.5	ASPC Y14.5
T				angles	XXX-13
				or ±2°	XXX-051
				dfr	D. WUJCHEN 1997-11-26
				engr	T. LEMKE 1997-11-26
				cltr	T. LEMKE 1997-11-26
				apdd	T. LEMKE 1997-11-26
sheet	revision				
index	sheet				



4mm RECEPTACLE ASSEMBLY  
10 x 40 = 400 POSITIONS  
74221  
sheet 3 of 4  
size A4  
CUSTOMER Drawing



Copyright FC



FCconnect.com

1 | 2

3 |

4

PRODUCT NUMBER  
SEE TABLE-SHEET 3

NOTES:

1. MATERIAL:

HOUSING: LCP, MEETS UL94 V-0 OR BETTER.  
CONTACT: COPPER ALLOY

PLATING

CONTACT: (SEE TABLE ON SHEET 3)  
SOLDER BALL: (SEE TABLE ON SHEET 3)  
EUTECTIC SnPb OR LEAD FREE  
95.5Sn/4Ag/0.5Cu

2. SOLDER BALLS WILL NOT BE PERFECT SPHERICAL SHAPE  
DUE TO REFLOW ATTACHMENT.

3. MATED HEIGHT EFFECTED BY CUSTOMER'S PCB PAD SIZE,  
PLATING, SOLDER REFLOW PROFILE, & SOLDER PASTE.

4. NO TIN\LEAD OR FLUX ABOVE TERMINAL SHOULDER.

5. PLATING FOR -2XX SERIES DASH NOS. MEETS  
THE REQUIREMENTS OF GR-1217-CORE,  
CENTRAL OFFICE ENVIRONMENT, (25 YEAR LIFE EXPECTANCY). THE

6. FOR PROPER APPLICATION FOLLOW FCI APPLICATION  
SPECIFICATION GS-20-033. LEAD FREE SOLDER BALLS WILL  
NOT SOLDER PROPERLY IN A LEADED SOLDER PROCESS  
DUE TO A HIGHER REFLOW TEMPERATURE. LEAD FREE  
PRODUCT IS THEREFORE NOT BACKWARDS COMPATIBLE WITH  
LEADED OR SOME SOLDERING APPLICATIONS. REFERENCE  
FCI APPLICATION SPECIFICATION.

7. THIS PRODUCT MEETS EUROPEAN UNION DIRECTIVES AND  
OTHER COUNTRY REGULATIONS AS DESCRIBED IN GS-47-0004  
PRODUCT MEETING THIS DIRECTIVE IS IDENTIFIED IN THE LOT  
CODE NUMBER MARKED ON EACH PART BY HAVING AN "X"  
IN THE SEVENTH CHARACTER POSITION.

8. 74221-A01, -A01LF, HAVE CUSTOMER SPECIAL PLATING.

9. CURRENT COMPANY LOGO TO BE VISIBLE IN  
APPROXIMATE AREA SHOWN.

10. A TRIANGLE SYMBOL WILL BE NEXT  
TO ANY DIMENSION, NEW VIEW, OR NOTE WHICH  
HAS BEEN MODIFIED WITH THE CURRENT DRAWING  
/REVISION.

11. -301, -301LF, -401, -401LF, -501, -501LF ARE OBSOLETE

mat'l. code	surface	tolerance	projection	product family
SEE NOTE 1	ASPC Y4.5	ASPC Y4.5		MEG-ARRAY
lfr	ecn no	dr	date	tolerances unless otherwise specified
T				angles
				3x3
				XXX-13
				0' ±2'
				XXX-051
				dr
				T. BREWAKER 2016-06-13
				ENGR D. HORCHLER 2016-06-13
				DR D. HORCHLER 2016-06-13
				apdd D. HORCHLER 2016-06-13
sheet	revision			
index	sheet			



title  
4mm RECEPTACLE ASSEMBLY  
10 x 40 = 400 POSITIONS  
dwg no  
74221  
sheet 4 of 4  
size  
A4  
type  
CUSTOMER Drawing

form: ArrayMLC

1 |

2 |

3 |

4

# Mouser Electronics

Authorized Distributor

Click to View Pricing, Inventory, Delivery & Lifecycle Information:

[FCI / Amphenol:](#)

[74221-A01](#)