

REFERENCE SPECIFICATIONS

-NFC 93425 (in compliance with HE 507)

PHYSICAL CHARACTERISTICS

- INSULATOR MATERIAL: THERMOPLASTIC UL94 V-0
- ACCESSORIES: STAINLESS STEEL or BRASS, cadmium plated yellow passivation
- SHELLS: STEEL, cadmium plated yellow passivation

ELECTRICAL CHARACTERISTICS

- CONTACT/CONTACT : >=1000 V
- CONTACT/GROUND : >=1200 V
- INSULATION RESISTANCE: >=5000 MOhms

ENVIRONMENTAL CHARACTERISTICS

- CLIMATIC CATEGORY: 55/125/56
- TEMPERATURE RANGE -55°C TO +125°C
- DAMP HEAT STEADY STATE 56 DAYS
- SALT SPRAY 48 HOURS

Series

DBMF5W5SN

Shell size: E A B C
see sheet 2

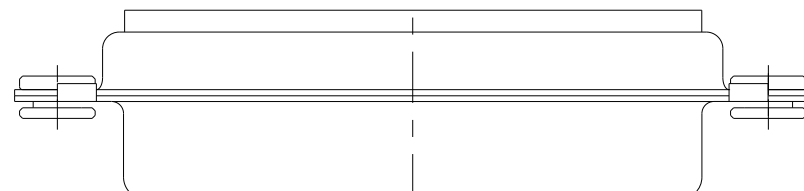
Front accessory definition
see sheet 2

- Blank** :without accessory
- L** :threaded insert M3
- O** :threaded insert UNC 4-40
- V** :female screw UNC 4-40
- I** :female screw M3
- F** :floating mounting

Contacts
Layout of contacts (see sheet 3)

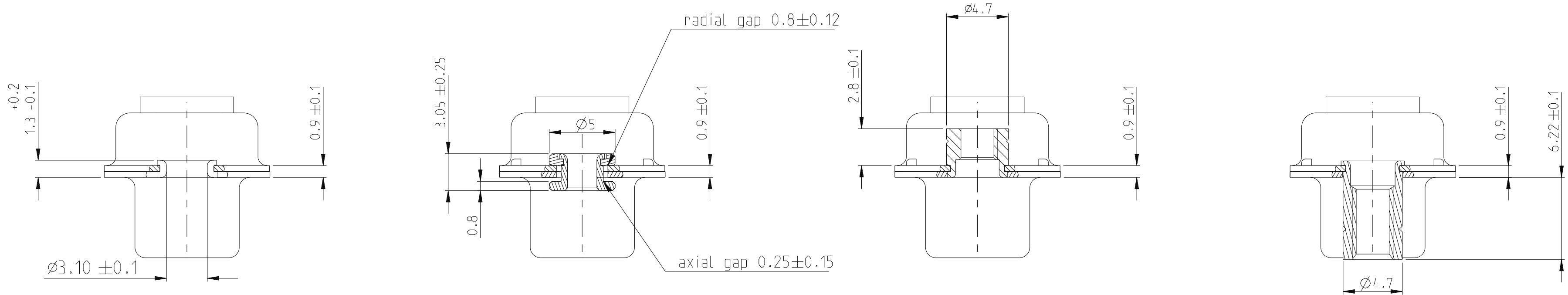
S :Socket

N :mandatory indication for HE 507 series



rev	ecn no	dr	date
A	LS06-0174	MPE	2006/11/14
B	LS07-0273	MPE	2007/10/30
C	F10-0072	LSA	2010/07/20
-	-	-	-
-	-	-	-
-	-	-	-
-	-	-	-
-	-	-	-

www.fciconnect.com		surface ISO 1302	- ✓	tolerance std ISO 406 ISO 1101	projection ⊕	mm ↔
		TOLERANCES UNLESS OTHERWISE SPECIFIED				
Dr	Pro Engineer 1	2015/06/14	ANGULAR	0.X	±0.3	size A2
Eng	Marty Glass	2015/06/16	LINEAR	0.XX	±0.1	Scale 2:1
Chr	-	-	0° ±2°	0.XXX	±0.05	ECN -
Appr	-	-	Product family	-	Spec ref	Released
FCI		title SUB FEMALE DMW			dwg no C01-8637-1731C	Rev. C
		full power without contact			-Product - Customer Drw sheet 1 of 4	
		catalog no				




FRONT ACCESSORY	Blank	without	F	Floating mounting	L	insert M3	V	Female screw UNC 4-40
					O	insert UNC 4-40	I	Female screw M3

PART NUMBER	FRONT ACCESSORY
D*M*W*SN	without
D*ML*W*SN	insert M3
D*MO*W*SN	insert UNC 4-40
D*MV*W*SN	female screw UNC 4-40
D*MI*W*SN	female screw M3
D*MF*W*SN	floating mounting

shell size	LAYOUTS
*	xW x
E	2V2
A	3V3
A	3W3
B	5W5
C	8W8

SCALE: 4

C

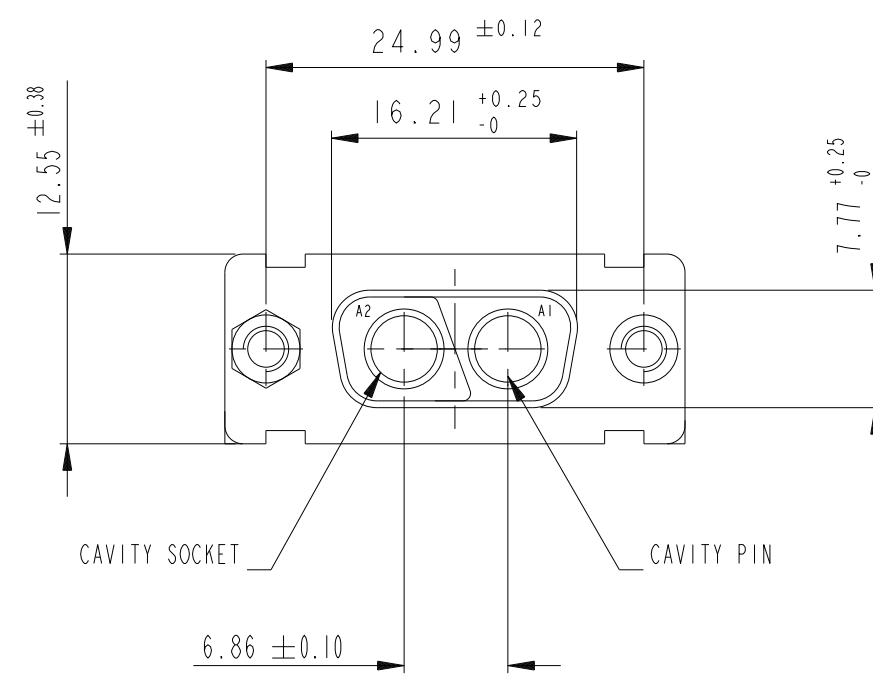
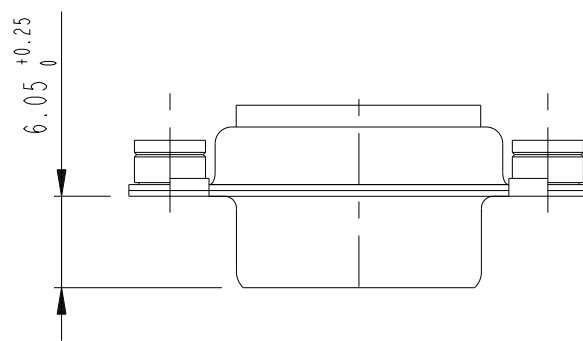
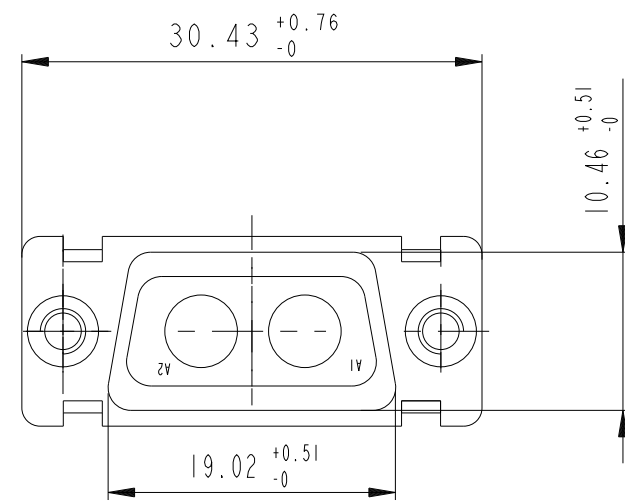
www.fciconnect.com			surface - ISO 1302		tolerance std ISO 406 ISO 1101		projection	mm
			TOLERANCES UNLESS OTHERWISE SPECIFIED					
Dr	Pro Engineer 1	2015/06/14	ANGULAR	LINEAR	0.X	±0.3	size	Scale
Eng	Marty Glass	2015/06/16			0.XX	±0.1	A2	4:1
Chr	-	-			0° ±2°	0.XXX	±0.05	ECN
Appr	-	-	Product family			-	Spec ref	Released
			title SUB FEMALE DMW			dwg no C01-8637-1731C		Rev.
			full power without contact					C
catalog no			-Product - Customer Drw sheet 2 of 4					

PDS: Rev :C

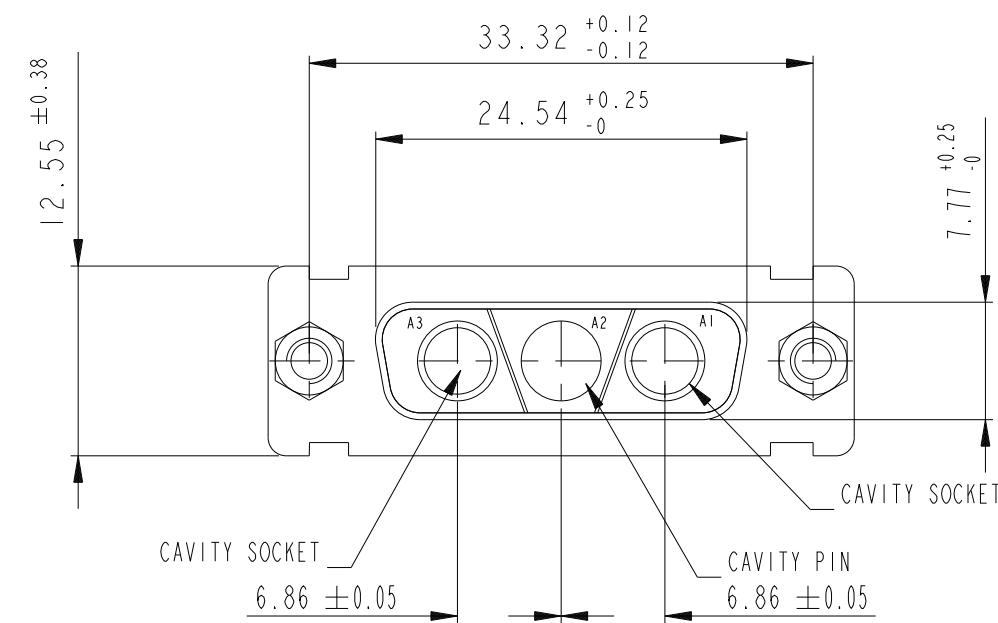
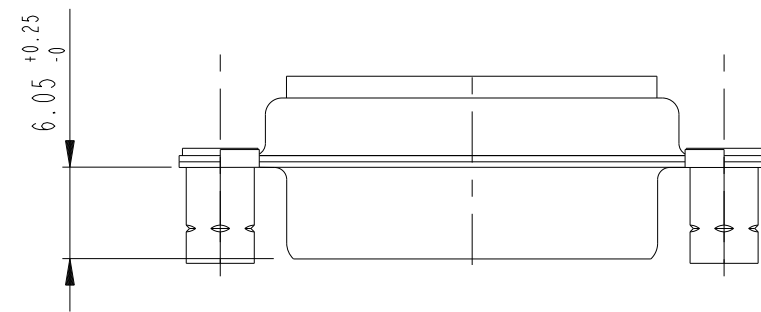
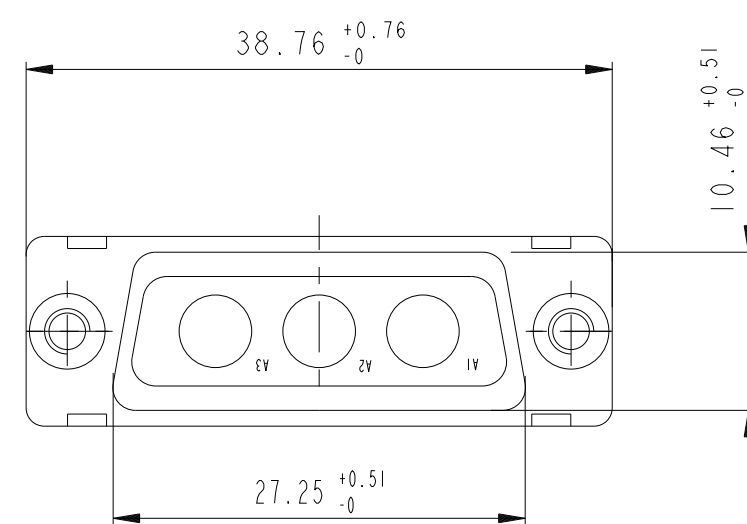
STATUS:Released

Printed: Jun 18, 2015

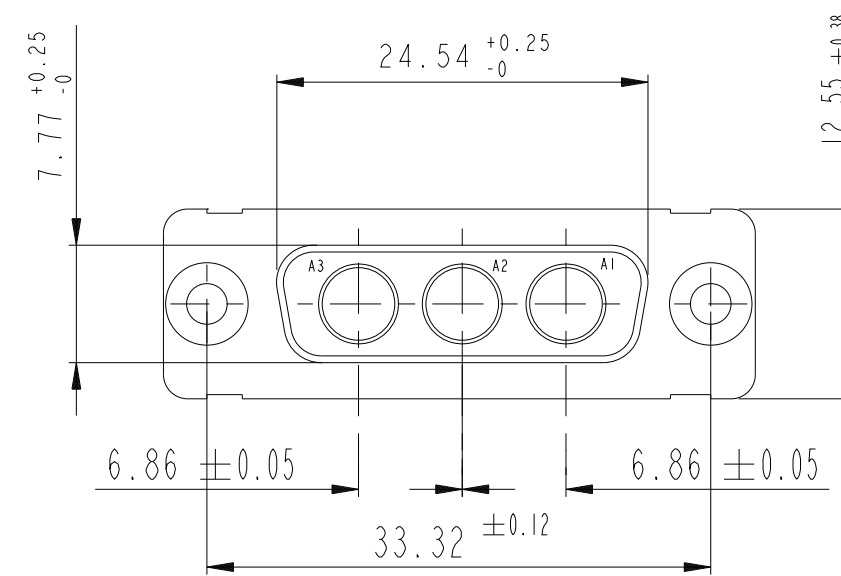
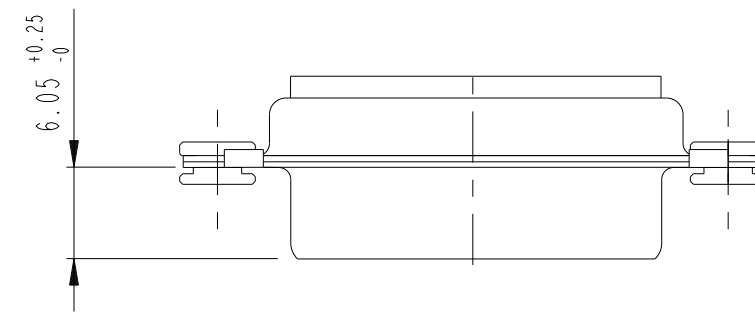
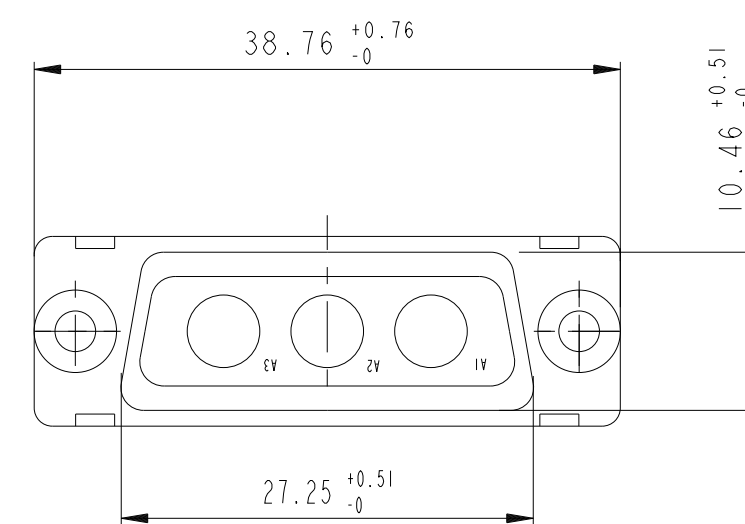
2V2



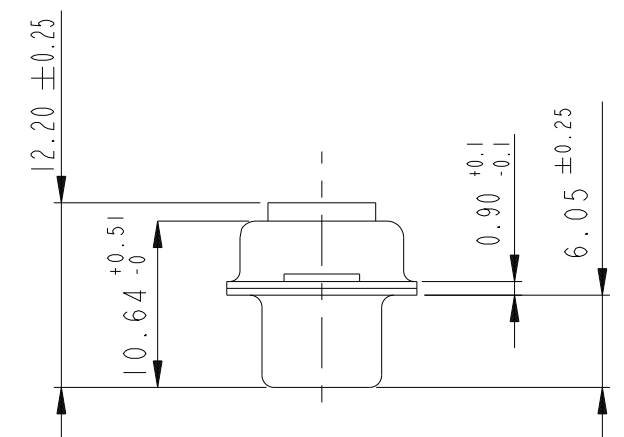
3V3

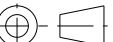




3W3



SIDE VIEW FOR
LAYOUTS: E A B C



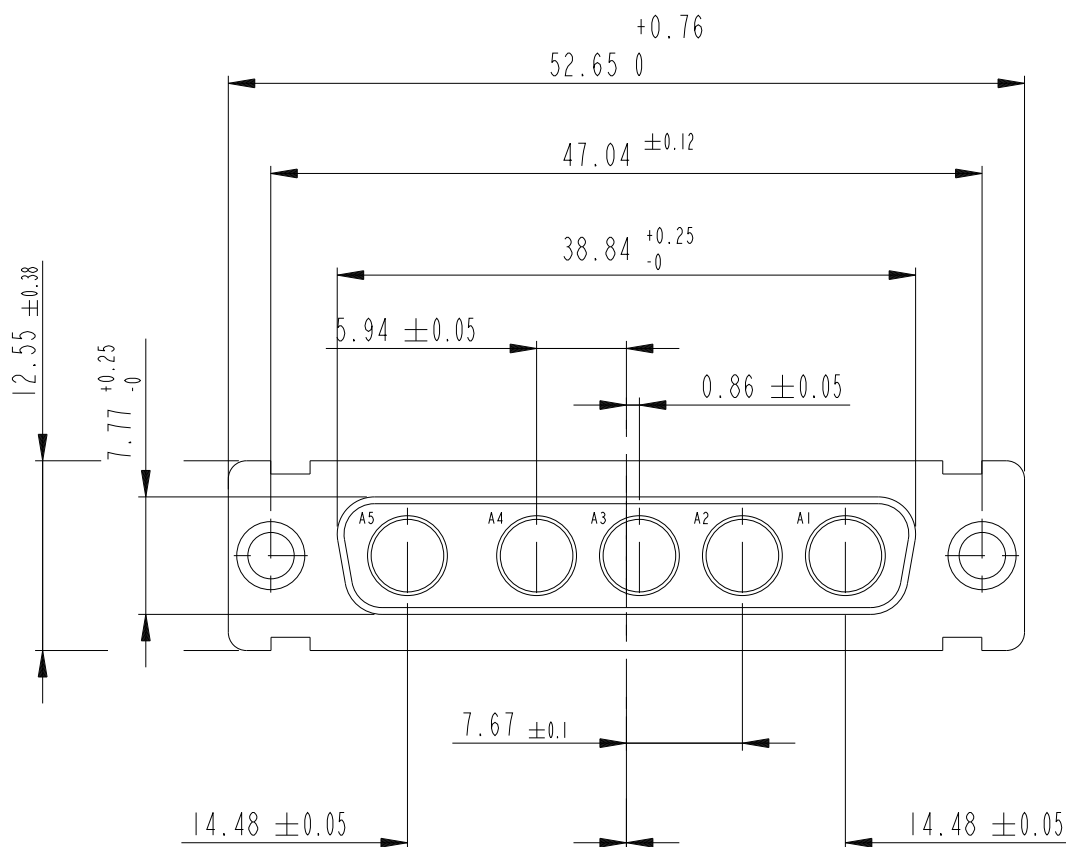
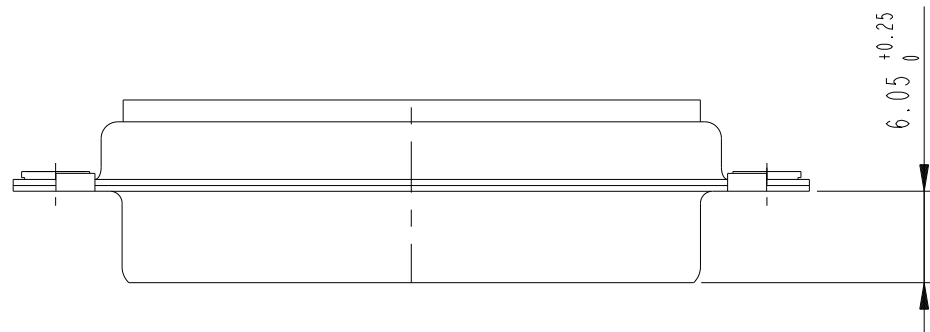
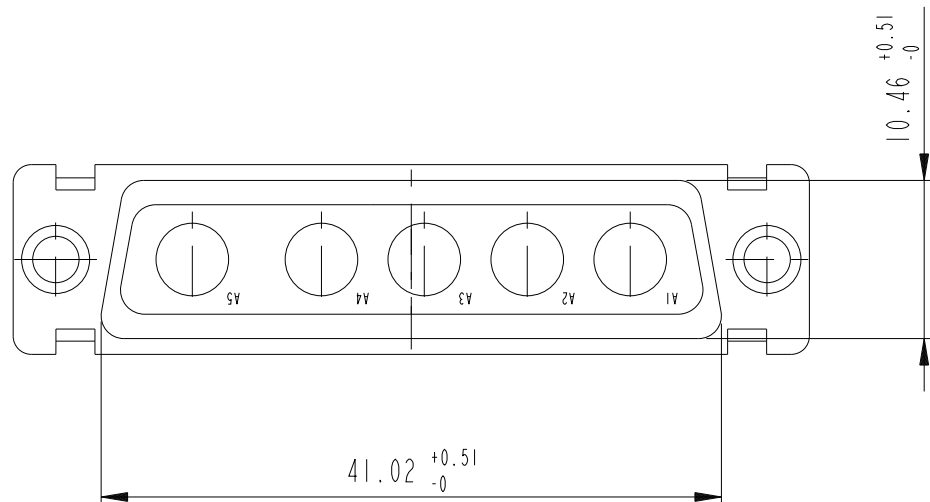
www.fciconnect.com			surface ISO 1302		- ✓ tolerance std ISO 406 ISO 1101		projection 		mm 	
			TOLERANCES UNLESS OTHERWISE SPECIFIED							
Dr	Pro Engineer 1	2015/06/14	ANGULAR	LINEAR	0.X		±0.3		size	Scale
Eng	Marty Glass	2015/06/16			0.XX		±0.1		A2	2:1
Chr	-	-			0° ±2°		0.XXX ±0.05		ECN -	
Appr	-	-	Product family				-	Spec ref Released		
		title SUB FEMALE DMW				dwg no C01-8637-1731C		Rev. C		
		full power without contact								
		catalog no		-Product - Customer Drw sheet 3 of 4						

PDS: Rev : C

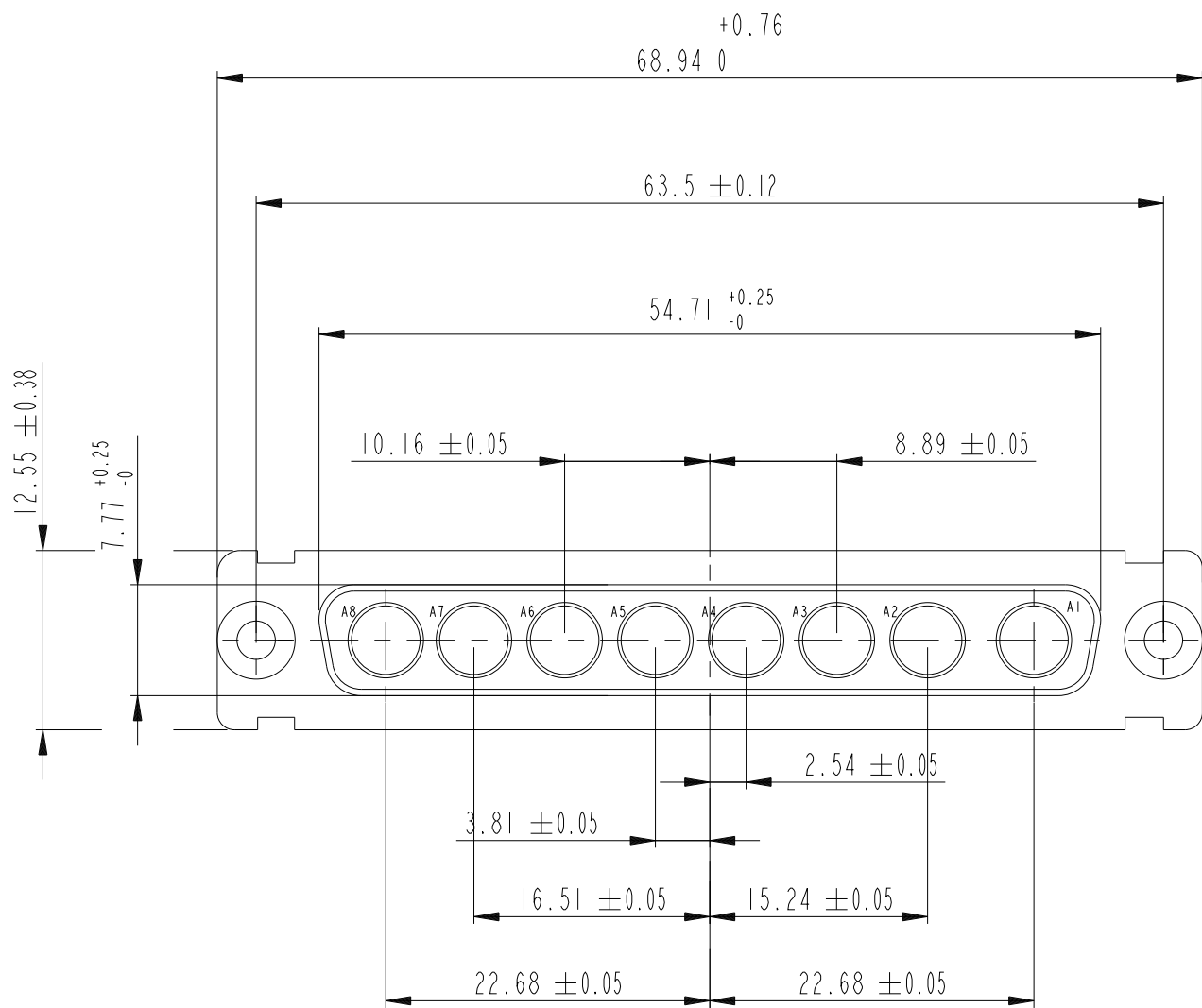
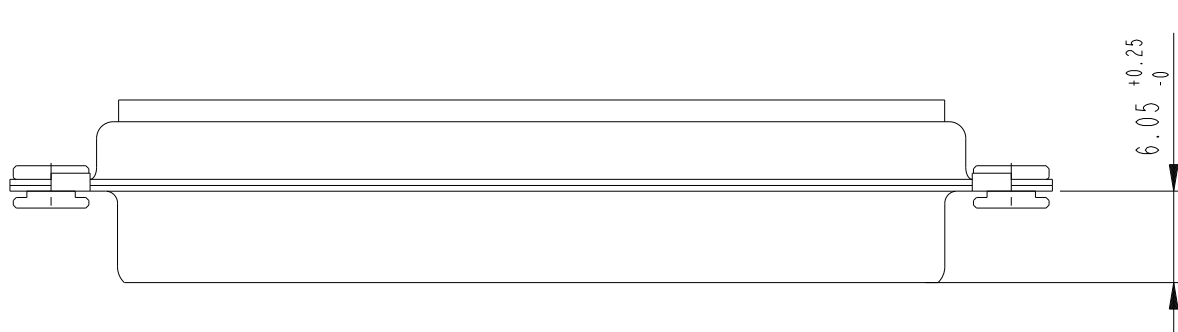
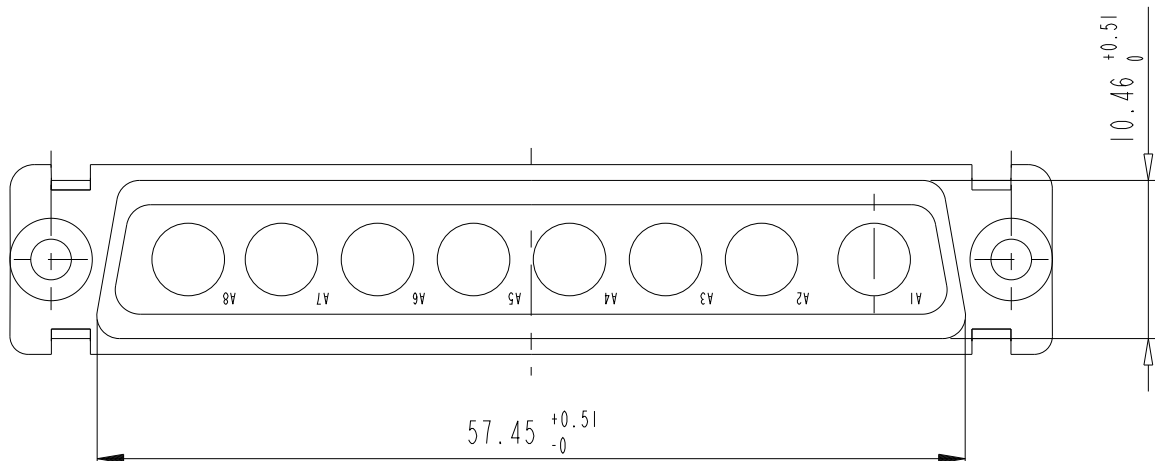
STATUS: Released

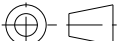


Printed: Jun 18, 2015

5W5



8W8



www.fciconnect.com			surface ISO 1302		- ✓	tolerance std ISO 406 ISO 1101		projection 		mm 												
			TOLERANCES UNLESS OTHERWISE SPECIFIED																			
Pro Engineer 1			2015/06/14		ANGULAR		LINEAR		0.X		±0.3		size		A2		Scale					
Marty Glass			2015/06/16						0.XX		±0.1						2:1					
-			-		0° ±2°				0.XXX		±0.05		ECN		-							
-			-		Product family						-		Spec ref		Released							
			title										SUB FEMALE DMW		no		C01-8637-1731C		Rev.			
			full power without contact														C					
catalog no			-										Product - Customer Draw sheet 4 of 4									

Mouser Electronics

Authorized Distributor

Click to View Pricing, Inventory, Delivery & Lifecycle Information:

[Amphenol:](#)

[DAMF3W3SN](#)