

-NFC 93425 (in compliance with HE 507)

PHYSICAL CHARACTERISTICS

-INSULATOR MATERIAL:	THERMOPLASTIC UL94V0
-CONTACT MATERIAL:	BRASS(SIGNAL CONTACT)
	BRASS (POWERS CONTACT)
-ACCESSORIES:	BRASS
-SHELLS:	STEEL

ELECTRICAL CHARACTERISTICS

-NOMINAL CURRENT:	7.5A (SIGNAL CONTACT) 30A or 40A (POWER CONTACT)
-CONTACT RESISTANCE:	7.3 m Ohms(SIGNAL and POWER)
-CONTACT/CONTACT :	1000 V
-CONTACT/GROUND :	1200 V
-INSULATION RESISTANCE:	5000 MOhms

- CLIMATIC CATEGORY: 55/125/21
TEMPERATURE RANGE -55°C TO +125°C
DAMP HEAT STEADY STATE 21 DAYS
SALT SPRAY 48 HOURS

- RETENTION AGAINST TORQUE:
 - Threaded insert: 0.7 N.m minimum
 - Female screw : 0.5 N.m minimum

NOTE RoHS INFORMATION

- The "LF" products meet european union Directives and other country regulations as described in GS-22-008.
- The housing will withstand exposure to 260°C peak temperature for 3.5 seconds in a wave solder application with a 1.6mm minimum thick circuit board. See application notes/procedures if they are available.
- Termination plating spec:
 - Signal contacts: Ni + Gold
 - Power contacts: Ni 1.27µm+Sn 2.5 to 7.5µm,pure bright
- Active area plating spec:
 - Signal and power contacts: Ni + Gold
- Shell plating :2 to 4 µm Cu + 3 to 10 µm Sn,pure bright
- Accessories: Sn pure bright
- Packaging spec: See GS-14-920

Series

Shell size: E A B C D
see sheet 2

Front accessory definition
see sheet 2

```
(Blank) :No shell accessory
L       :Threaded insert M3
O       :Threaded insert UNC 4-40
V       :Female screw UNC 4-40
I       :Female screw M3
```

Layout of contacts (see sheet 3)

Contacts

Termination type ←

3 Straight version

Plating ←————→

00	200 matings/unmatings
43	500 matings/unmatings

PCB accessories definition
see sheet 2

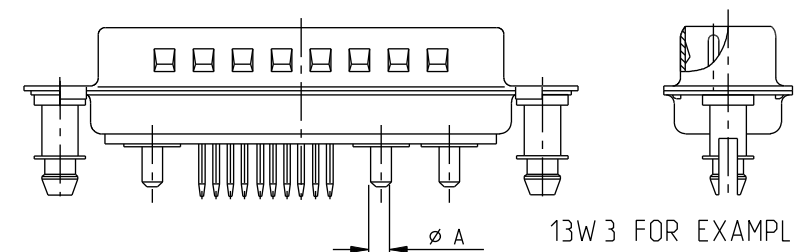
A : No PCB accessory
H : Harpoons for PCB 2.40mm
G : Harpoons for PCB 1.60mm


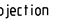

```
Power contacts  ←————
00 :Not fitted with power contact
30 :Fitted with power contacts 30 Amp.
40 :Fitted with power contacts 40 Amp.
```

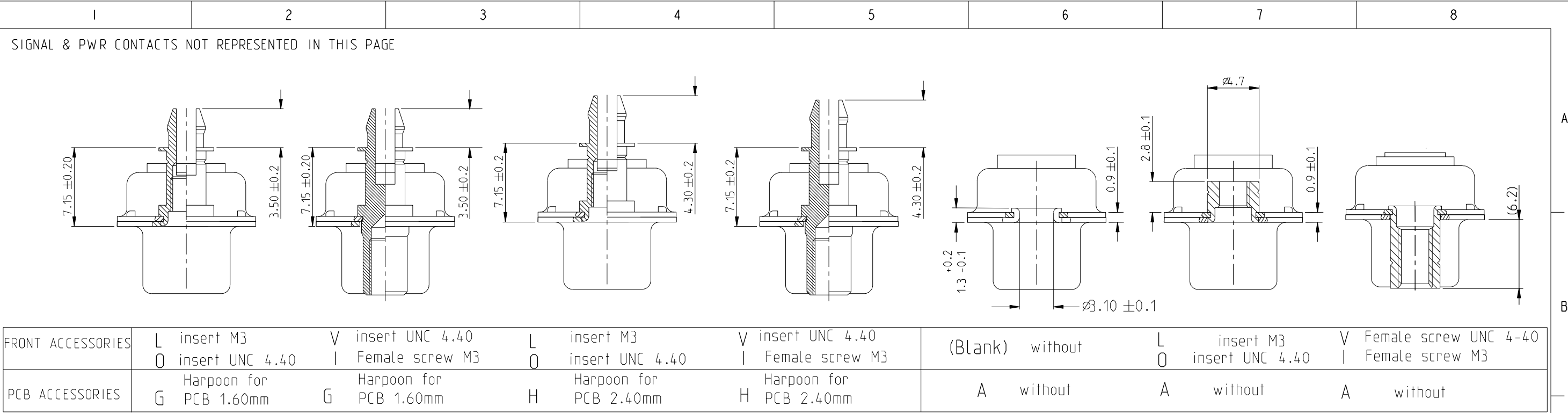
TABLE 1:PCB HOLE DIAMETERS

POWER CONTACTS			ACCESSORIES	SIGNAL CONTACTS
30 A	2.00	ø2.40	ø3.10	ø0.90 min
40 A	2.80	3.10		
Max current power	ØA ^{+0.1} ₀	PCB HOLE +/-0.1	PCB HOLE +/-0.1	PCB HOLE +/-0.1

rev	ecn no	dr	date
H	F09-0092	LSA	2009/09/1
J	F10-0035	LSA	2010/04/1
-	-	-	-
D	LS07-0239	MPE	2007/09/2
E	LS07-0273	MPE	2007/10/3
F	LS08-0067	MPE	2008/03/1
G	LS09-0027	MPE	2009/01/2



www.fciconnect.com			surface 		tolerance std		projection 			
			TOLERANCES UNLESS OTHERWISE SPECIFIED							
Dr	M PESSON	2005-10-11	ANGULAR	LINEAR	0.X	±/	size	A2	Scale	2:1
Eng	P LEGARE	2005-10-11			0.XX	±/				
Chr			0° ±/		0.XXX	±/	ECN	F10-0035		
Appr			Product family				- Spec ref			
FCI		title SUB MALE DW				dwg no		C01-8639-2306		Rev
		mixed power straight solder								J
catalog no		-				CUSTOMER		sheet 1 of 7		



(this part of the table is not detailed in tables below)

PART NUMBER	AMPS	MATINGS/ UNMATINGS	FRONT ACCESSORY	PCB ACCESSORIES
D*LxW xP300G30LF	30	200	insert M3	harpoon PCB 1.60mm
D*OxW xP300G30LF	30	200	insert UNC 4.40	harpoon PCB 1.60mm
D*VxW xP300G30LF	30	200	female screw UNC 4.40	harpoon PCB 1.60mm
D*LxW xP300H30LF	30	200	insert M3	harpoon PCB 2.40mm
D*OxW xP300H30LF	30	200	insert UNC 4.40	harpoon PCB 2.40mm
D*VxW xP300H30LF	30	200	female screw UNC 4.40	harpoon PCB 2.40mm
D*LxW xP300G40LF	40	200	insert M3	harpoon PCB 1.60mm
D*OxW xP300G40LF	40	200	insert UNC 4.40	harpoon PCB 1.60mm
D*VxW xP300G40LF	40	200	female screw UNC 4.40	harpoon PCB 1.60mm
D*LxW xP300H40LF	40	200	insert M3	harpoon PCB 2.40mm
D*OxW xP300H40LF	40	200	insert UNC 4.40	harpoon PCB 2.40mm
D*VxW xP300H40LF	40	200	female screw UNC 4.40	harpoon PCB 2.40mm

shell size

*

E

A

A

B

B

B

B

C

C

C

D

D

D

D

LAYOUTS

xW x

5W 1

11W 1

7W 2

21W 1

17W 2

13W 3

9W 4

25W 3

21W A4

27W 2

47W 1

24W 7

36W 4

PART NUMBER	AMPS	MATINGS/ UNMATINGS	FRONT ACCESSORY	PCB ACCESSORIES
D*LxW xP343G30LF	30	500	insert M3	harpoon PCB 1.60mm
D*OxW xP343G30LF	30	500	insert UNC 4.40	harpoon PCB 1.60mm
D*VxW xP343G30LF	30	500	female screw UNC 4.40	harpoon PCB 1.60mm
D*LxW xP343H30LF	30	500	insert M3	harpoon PCB 2.40mm
D*OxW xP343H30LF	30	500	insert UNC 4.40	harpoon PCB 2.40mm
D*VxW xP343H30LF	30	500	female screw UNC 4.40	harpoon PCB 2.40mm
D*LxW xP343G40LF	40	500	insert M3	harpoon PCB 1.60mm
D*OxW xP343G40LF	40	500	insert UNC 4.40	harpoon PCB 1.60mm
D*VxW xP343G40LF	40	500	female screw UNC 4.40	harpoon PCB 1.60mm
D*LxW xP343H40LF	40	500	insert M3	harpoon PCB 2.40mm
D*OxW xP343H40LF	40	500	insert UNC 4.40	harpoon PCB 2.40mm
D*VxW xP343H40LF	40	500	female screw UNC 4.40	harpoon PCB 2.40mm

www.fciconnect.com			surface <input checked="" type="checkbox"/>	tolerance std		projection		
			TOLERANCES UNLESS OTHERWISE SPECIFIED					
Dr	M PESSON	2005-10-11	ANGULAR	LINEAR	0.x	±/	size A2	Scale 2:1
Eng	P LEGARE	2005-10-11			0.xx	±/		
Chr					0.xxx	±/		
Appr			Product family		- Spec ref			
FCI			title SUB MALE DW			dwg no C01-8639-2306		Rev. J
			mixed power straight solder					
			catalog no			CUSTOMER		sheet 2 of 7

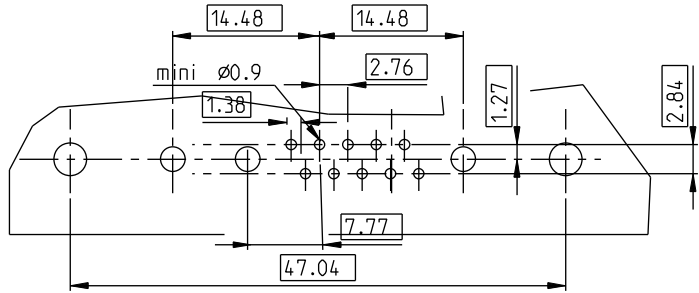




13W 3

LAYOUT AND CONNECTOR DIMENSIONS

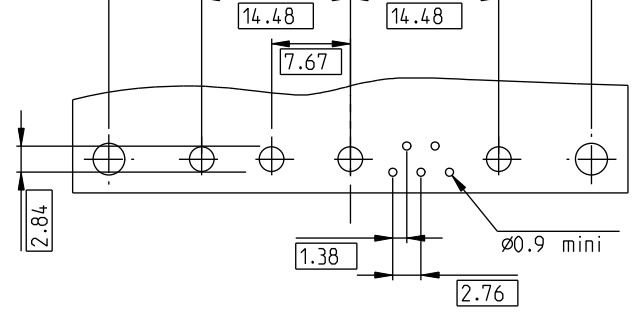
For PCB hole diameters see table 1 sheet 1



9W 4

LAYOUT AND CONNECTOR DIMENSIONS

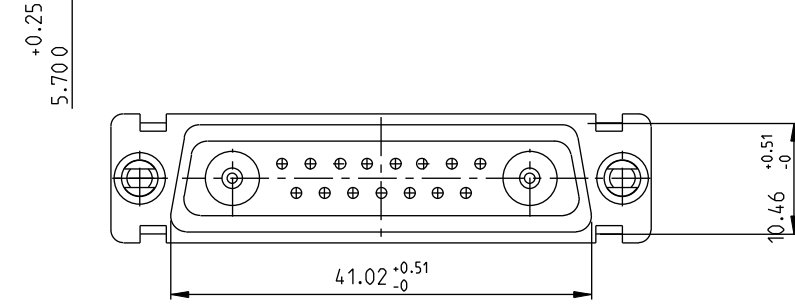
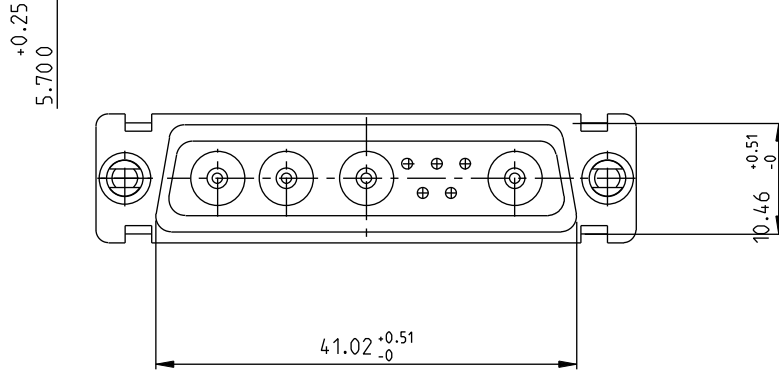
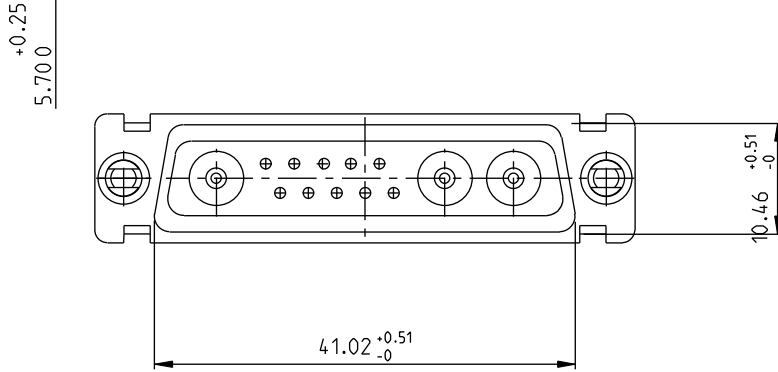
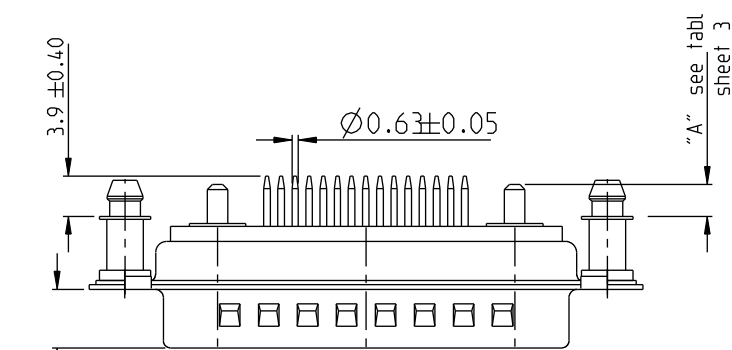
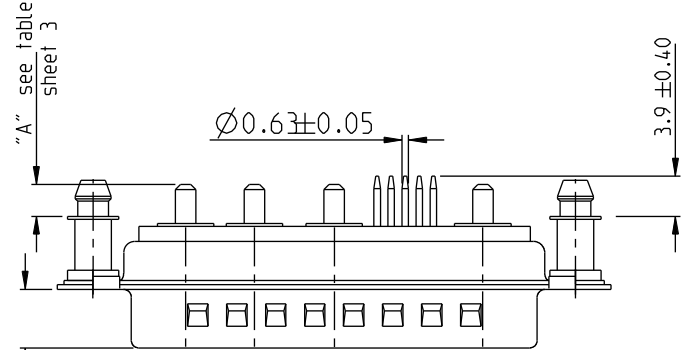
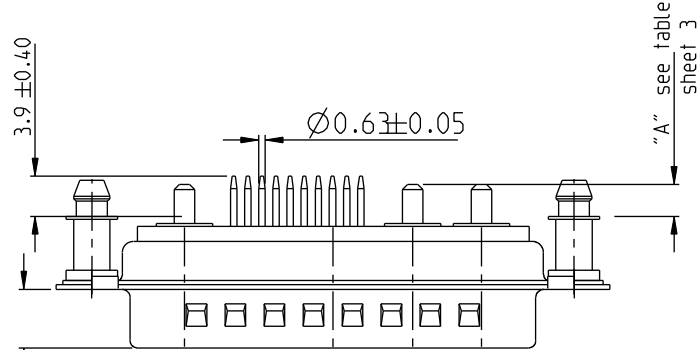
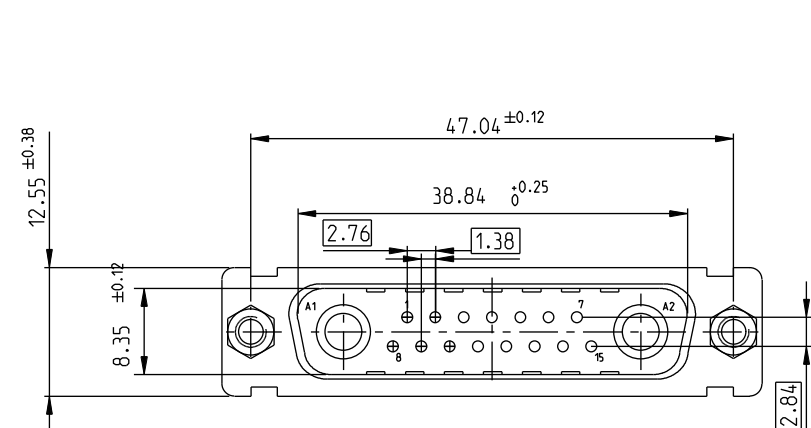
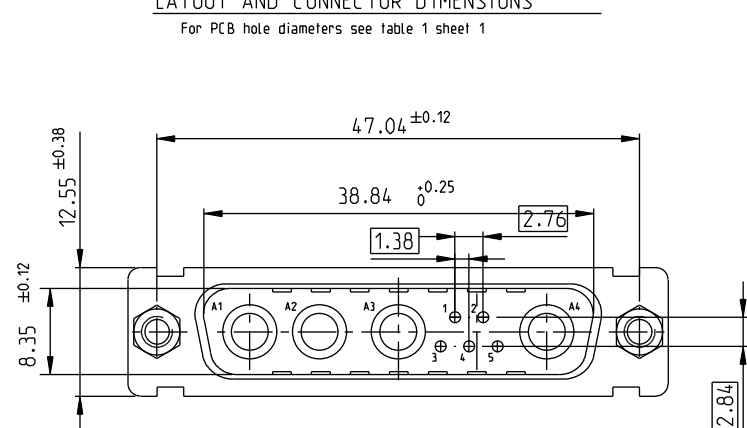
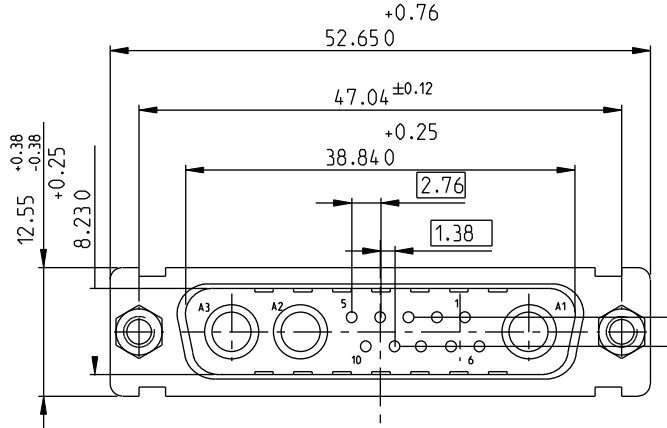
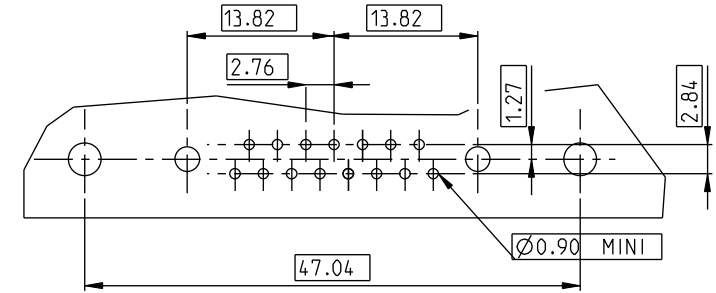
For PCB hole diameters see table 1 sheet 1




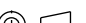


17W 2

LAYOUT AND CONNECTOR DIMENSIONS

For PCB hole diameters see table 1 sheet 1



Floating signal contacts

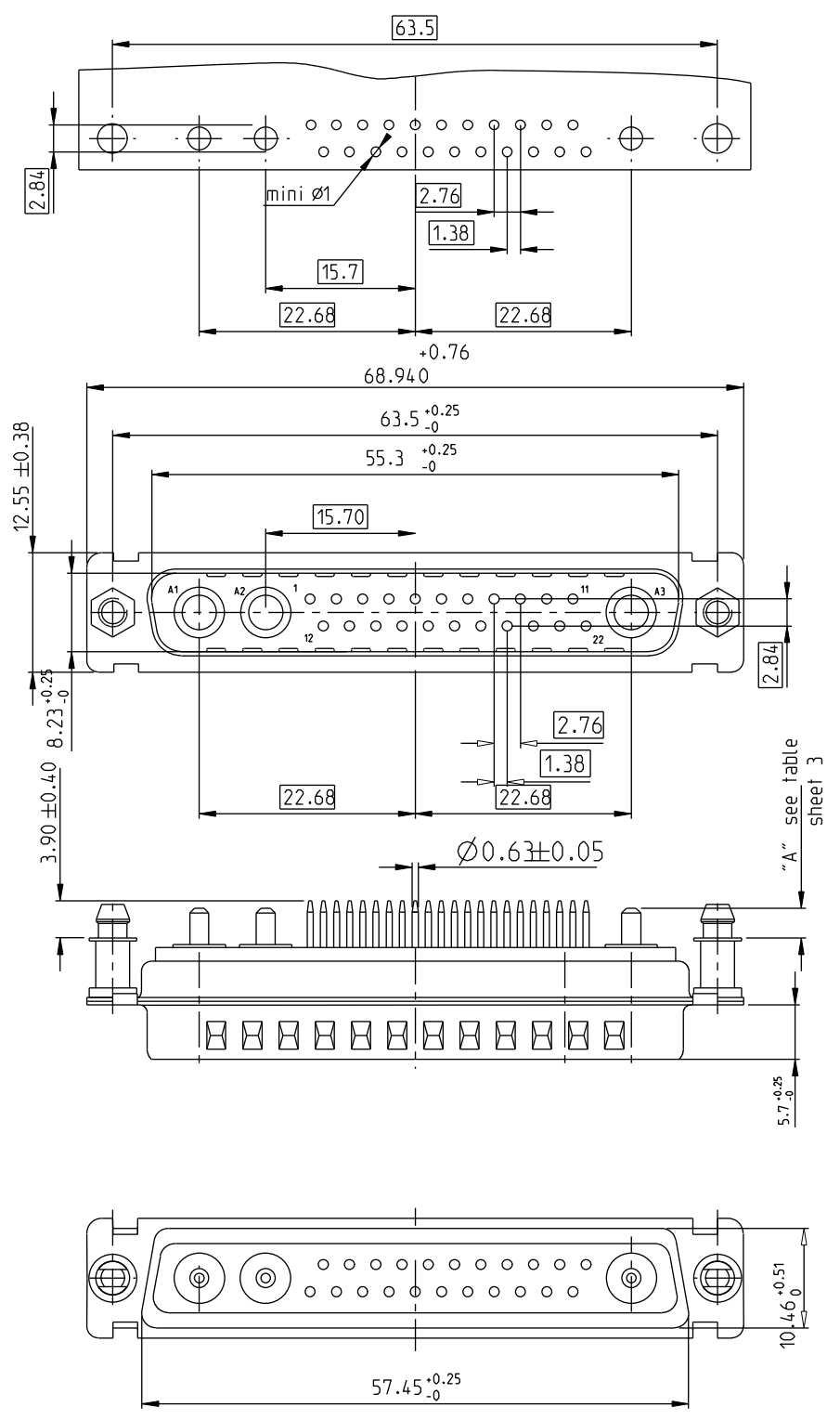
www.fciconnect.com			surface 		tolerance std		projection 			
			TOLERANCES UNLESS OTHERWISE SPECIFIED							
Dr	M PESSON	2005-10-11	ANGULAR	LINEAR	0.X	±/	size A2	Scale 2:1		
Eng	P LEGARE	2005-10-11			0.XX	±/				
Chr					0.XXX	±/				
Appr			0° ±/°				ECN		F10-0035	
			Product family				-	Spec ref		
			title SUB MALE DW mixed power straight solder				dwg no C01-8639-2306		Rev. J	
			catalog no		-		CUSTOMER		sheet 4 of 7	





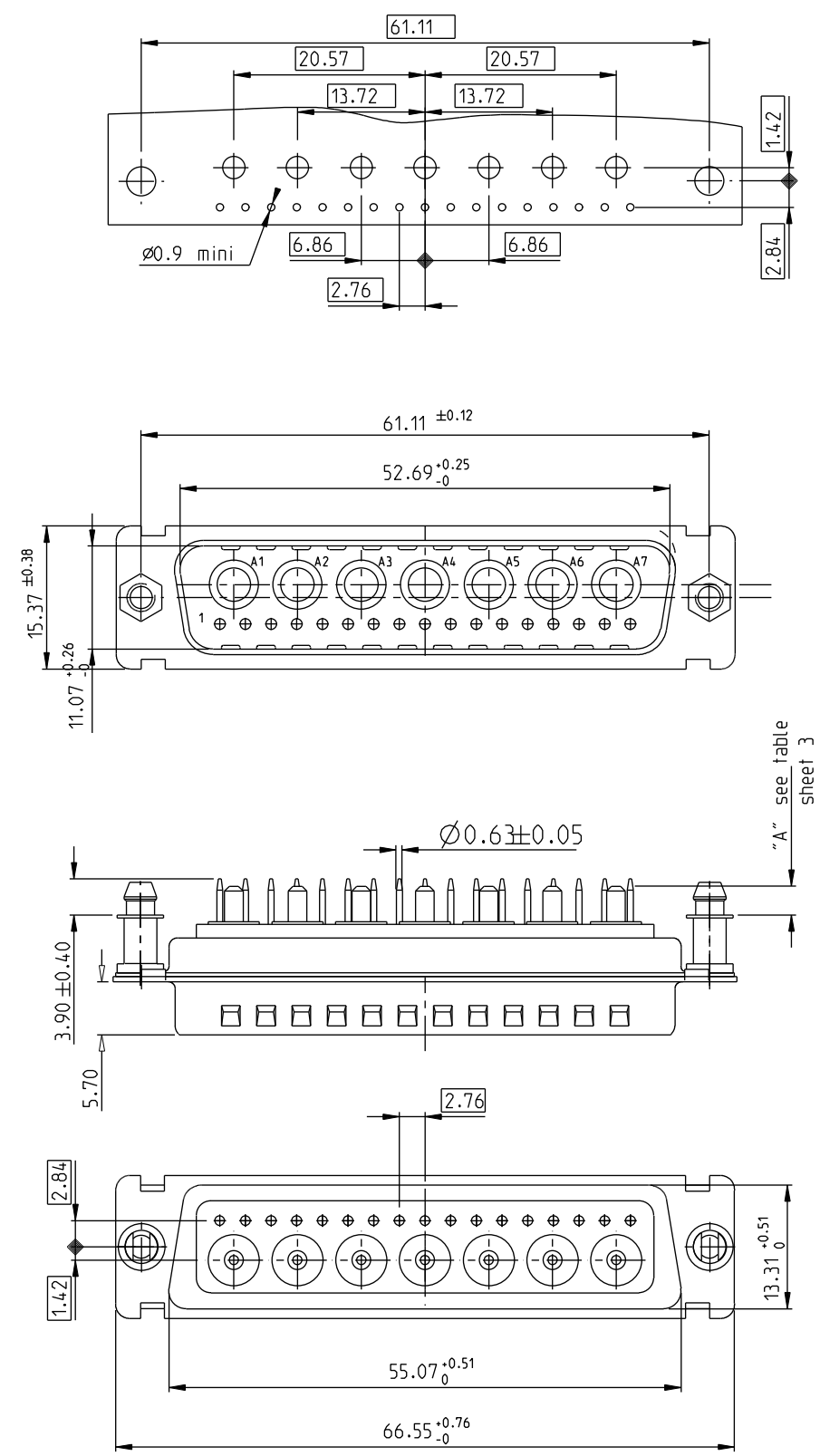
25W 3

LAYOUT AND CONNECTOR DIMENSIONS
For PCB hole diameters see table 1 sheet 1

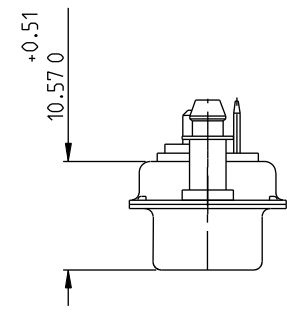


24W 7

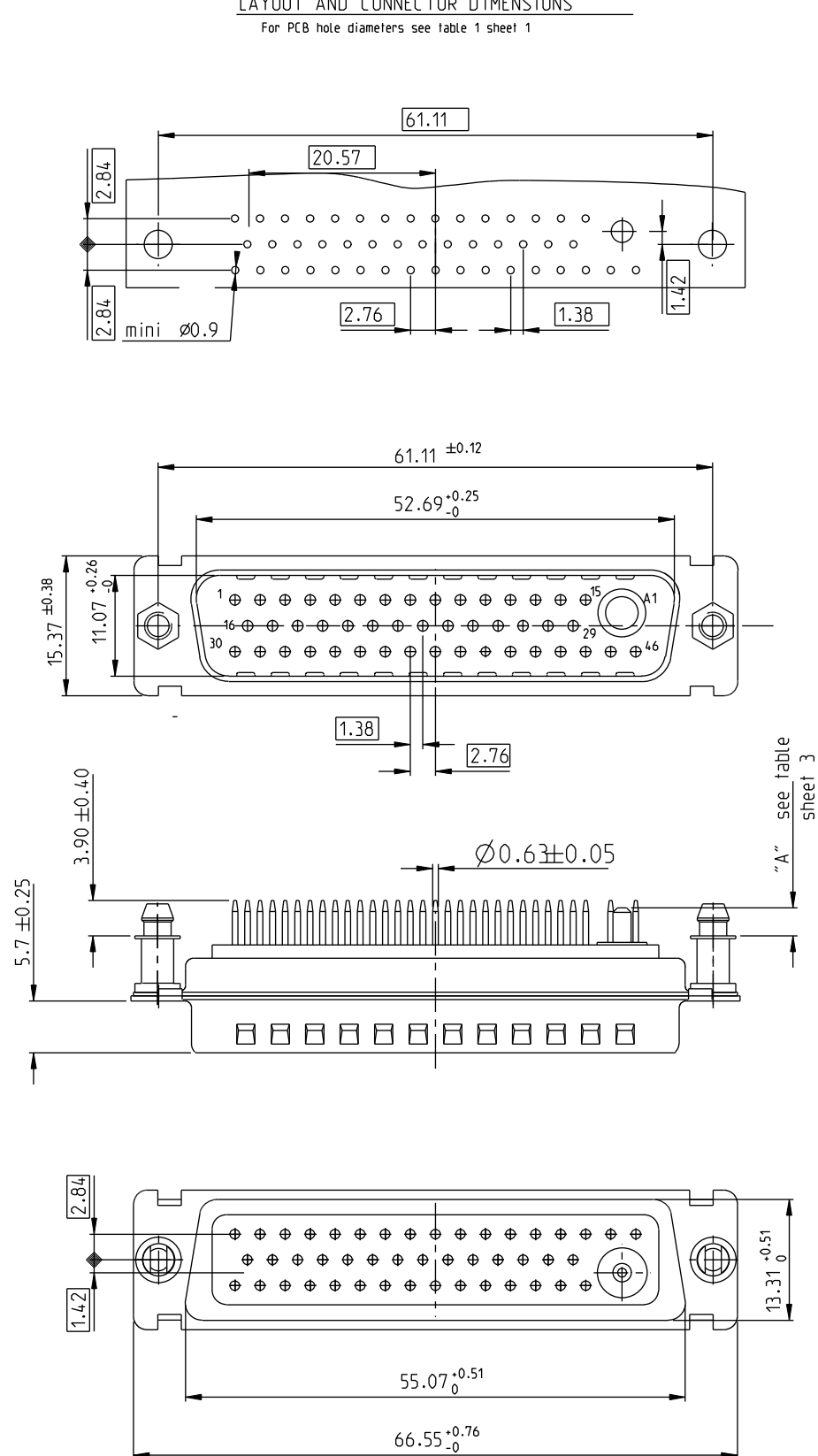
LAYOUT AND CONNECTOR DIMENSIONS
For PCB hole diameters see table 1 sheet 1



SIDE VIEW FOR
LAYOUT: D



www.fciconnect.com			surface	tolerance std	projection		
			TOLERANCES UNLESS OTHERWISE SPECIFIED				
Dr	M PESSON	2005-10-11	ANGULAR	LINEAR	0.X	±/	size
Eng	P LEGARE	2005-10-11			0.XX	±/	A2
Chr					0.XXX	±/	Scale
Appr			0°	±°	ECN		F10-0035
			Product family		- Spec ref		
FCI			title			dwg no	Rev.
			SUB MALE DW			C01-8639-2306	J
			mixed power straight solder				
			catalog no			CUSTOMER	sheet 6 of 7



Mouser Electronics

Authorized Distributor

Click to View Pricing, Inventory, Delivery & Lifecycle Information:

[Amphenol:](#)

[DB9W4P300A00LF](#) [DCV21WA4P300G00LF](#) [DD24W7P343A40LF](#) [DDV24W7P300H40LF](#) [DDL24W7P300H30LF](#)
[DB9W4P343A00LF](#) [DD24W7P300A00LF](#) [DBL13W3P300A30LF](#) [DBO13W3P300H00LF](#)