

## REFERENCE SPECIFICATIONS

-NFC 93425 (in compliance with HE 507)

## PHYSICAL CHARACTERISTICS

-INSULATOR MATERIAL: THERMOPLASTIC UL94V0

-CONTACT MATERIAL: PHOSPHOR BRONZE( SIGNAL CONTACT )  
GOLD OVER NICKEL

-ACCESSORIES: STAINLESS STEEL or BRASS  
Cadmium plated, yellow passivation

-SHELLS: STEEL  
Cadmium plated, yellow passivation

## ELECTRICAL CHARACTERISTICS

-NOMINAL CURRENT: 7.5A (SIGNAL CONTACT)

-CONTACT RESISTANCE:  $\leq 7.3 \text{ m Ohms SIGNAL}$

-CONTACT/CONTACT :  $\geq 1000 \text{ V}$

-CONTACT/GROUND :  $\geq 1200 \text{ V}$

-INSULATION RESISTANCE:  $\geq 5000 \text{ MOhms}$

- CLIMATIC CATEGORY: 55/125/21

TEMPERATURE RANGE -55°C TO +125°C

DAMP HEAT STEADY STATE 56 DAYS

SALT SPRAY 48 HOURS

Series

# DBML13W3S300N

Shell size: **E A B C D**  
see sheet 3

**M** :characteristic  
for the DM series

Front accessory definition  
see sheet 2

**Blank** :without accessory

**L** :threaded insert M3

**O** :threaded insert UNC 4-40

**V** :female screw UNC 4-40

**F** :floating mounting

**S** :spacer

Layout of contacts (see sheet 3)

Contacts

**S** :Socket

Termination type

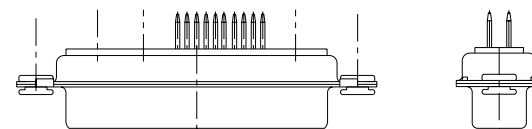
**3** Straight version

Plating




**00** straight solder 500 matings/unmatings

**43** straight solder 500 matings/unmatings for harsh environment

**N** :obligatory indication for HE 507 series



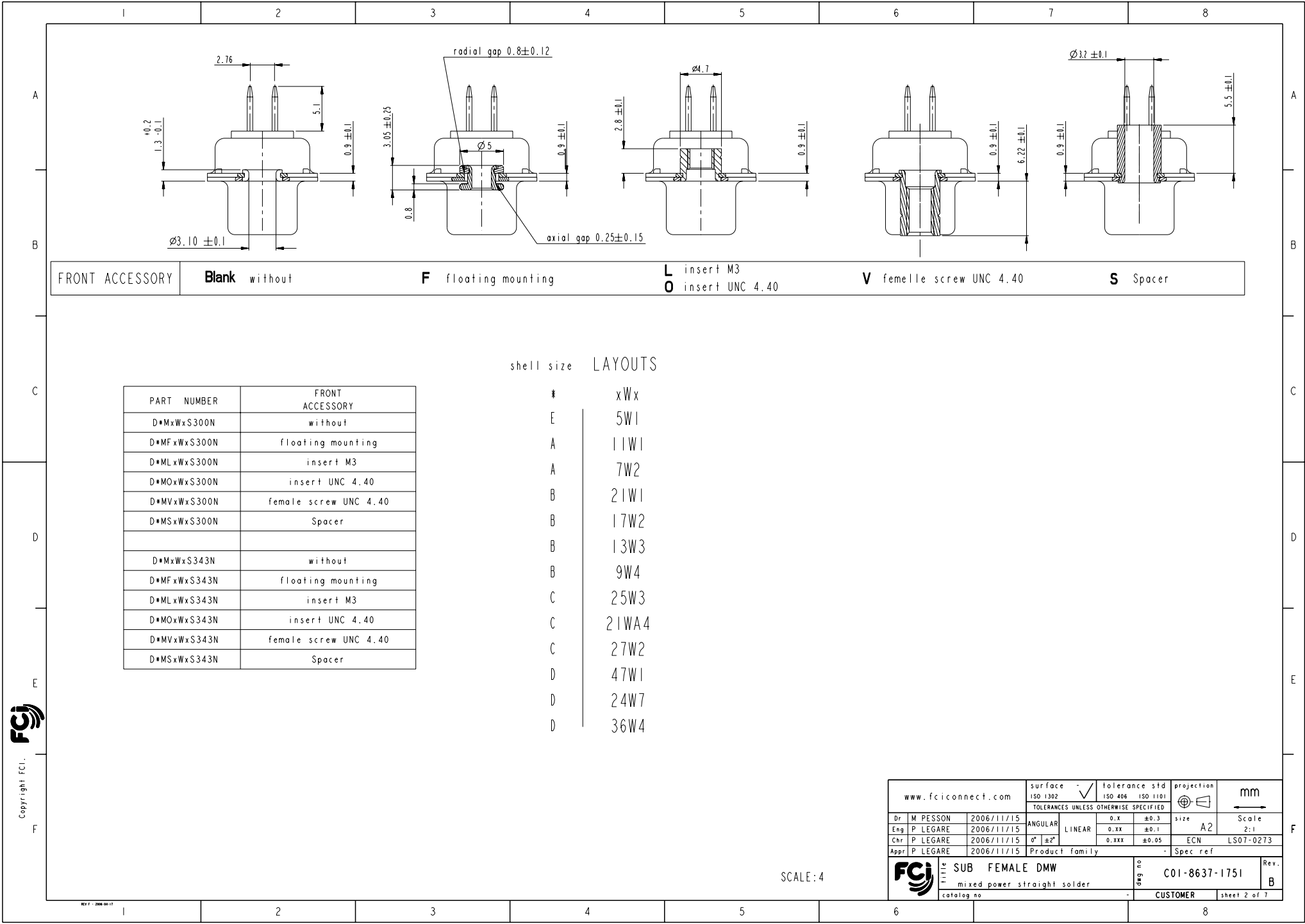
13W3 FOR EXAMPLE

www.fciconnect.com				surface <input checked="" type="checkbox"/> tolerance std ISO 1302 ISO 406 ISO 1101			projection 		mm 						
				TOLERANCES UNLESS OTHERWISE SPECIFIED											
rev	ecn no	dr	date	Dr	M PESSON	2006/11/15	ANGULAR	0.X	±0.3	size	A2	Scale	2:1		
A	LS06-0174	MPE	2006/11/15	Eng	P LEGARE	2006/11/15	LINEAR	0.XX	±0.1						
B	LS07-0273	MPE	2007/10/30	Chr	P LEGARE	2006/11/15	0° ±2°	0.XXX	±0.05	ECN	LS07-0273				
-	-	-	-	Appr	P LEGARE	2006/11/15	Product family	-	-	Spec ref					
-	-	-	-												
-	-	-	-												
-	-	-	-												
-	-	-	-												
								SUB FEMALE DMW		deg no		C01-8637-1751		Rev.	B
								mixed power straight solder							
								catalog no		-		CUSTOMER		sheet 1 of 7	



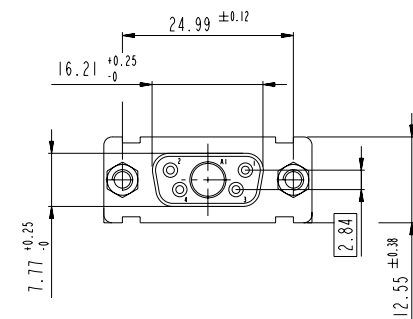
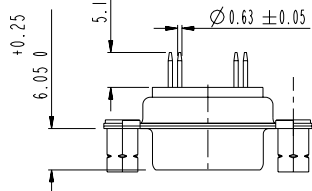
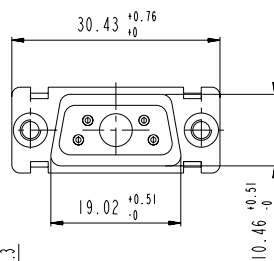
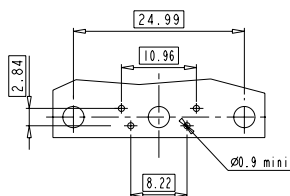
Copyright FCI.

REV 7 - 2006-04-17



## 5W1

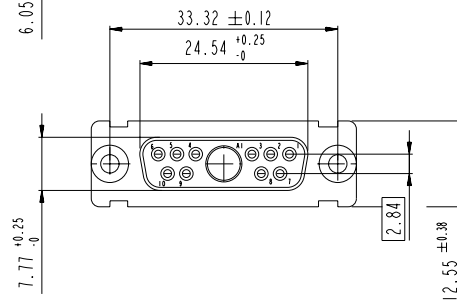
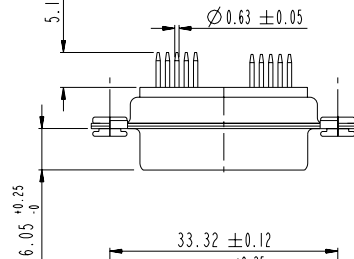
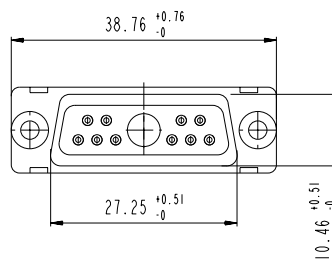
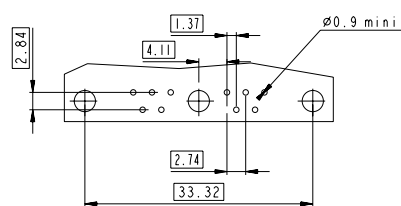
## LAYOUT AND CONNECTOR DIMENSIONS



### Floating signal contacts

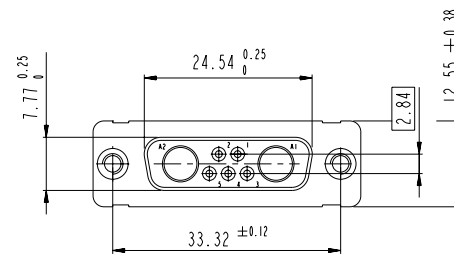
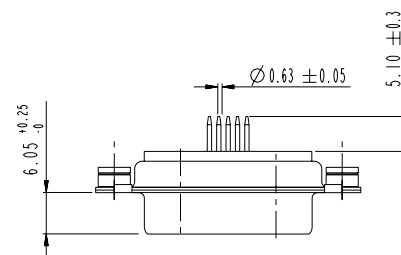
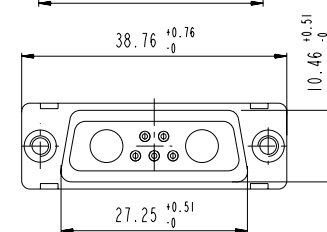
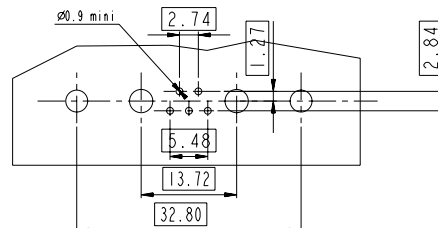
## | | W | |

## LAYOUT AND CONNECTOR DIMENSIONS

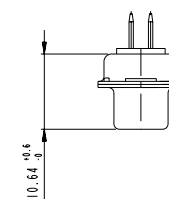





7W2

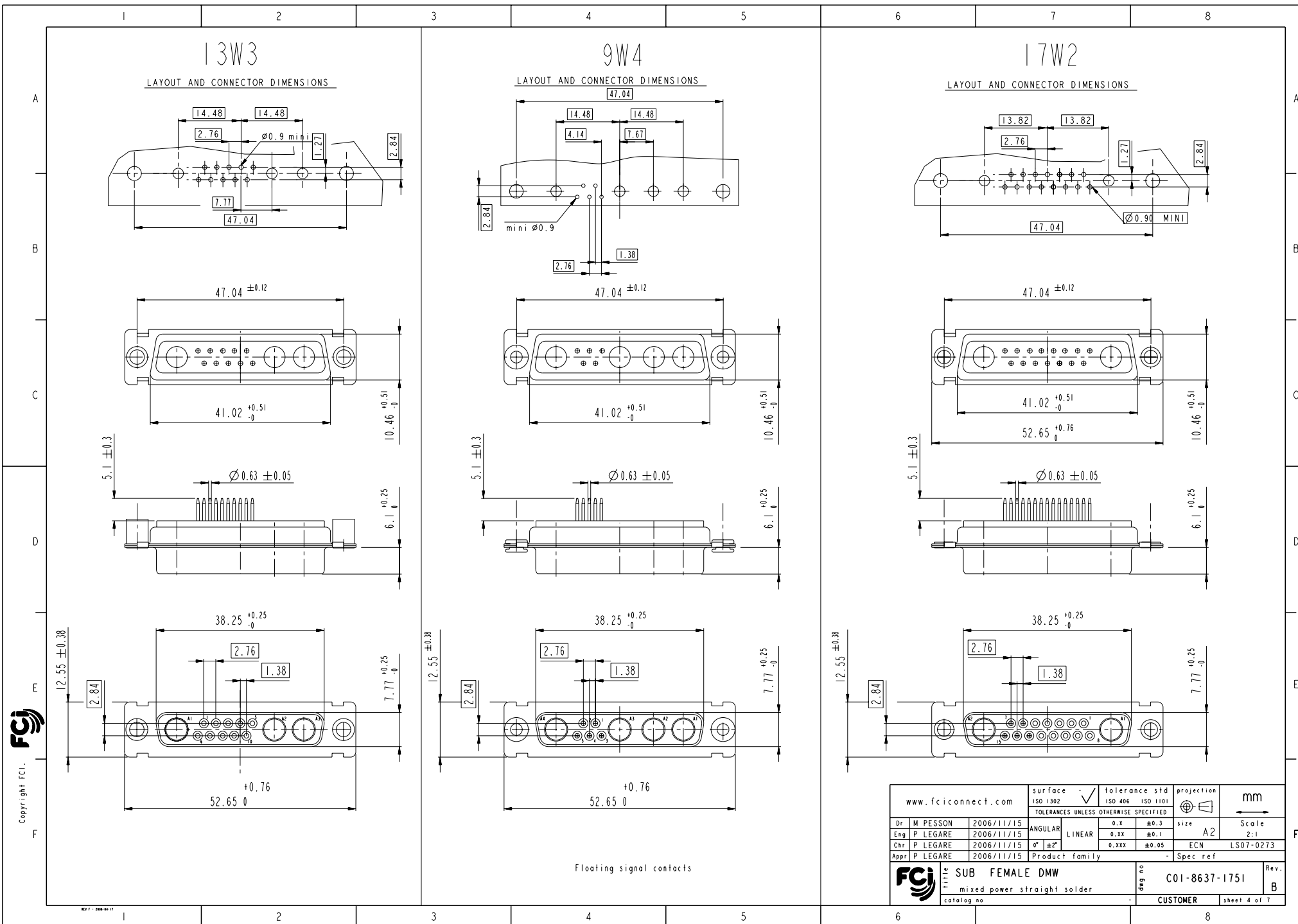
## LAYOUT AND CONNECTOR DIMENSIONS



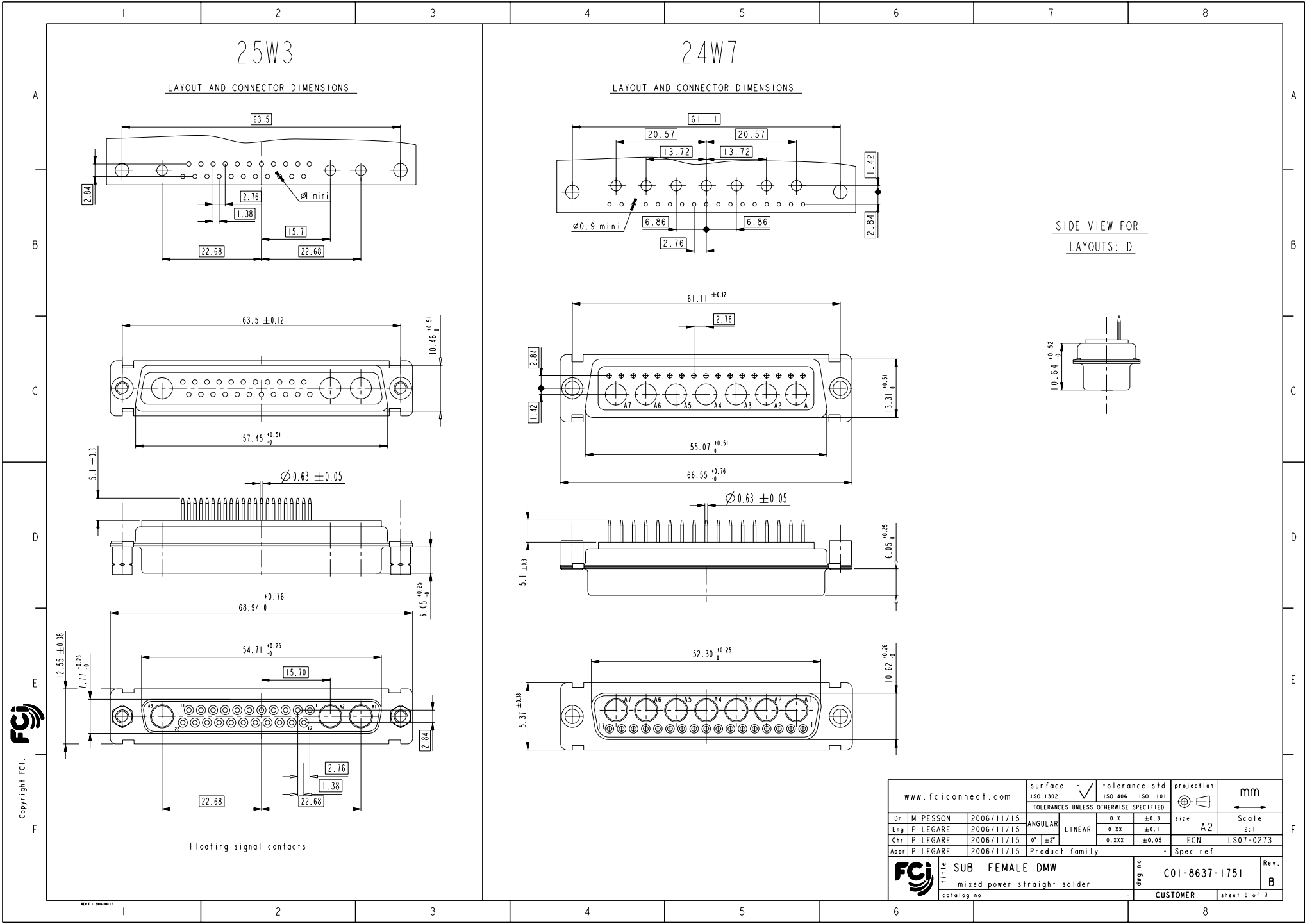
SIDE VIEW FOR  
LAYOUTS: E A B C



www.fciconnect.com			surface - <input checked="" type="checkbox"/> tolerance std ISO 1302 ISO 406 ISO 1101		projection 		mm 	
			TOLERANCES UNLESS OTHERWISE SPECIFIED					
Dr	M PESSON	2006/11/15	ANGULAR	LINEAR	0.XX ±0.3	size	A2	Scale
Eng	P LEGARE	2006/11/15			0.XX ±0.1			2:1
Chr	P LEGARE		0° ±2°		0.XXX ±0.05	ECN	LS07-0273	
Appr	P LEGARE	2006/11/15	Product family			-	Spec ref	
			title SUB FEMALE DMW mixed power straight solder			day no C01-8637-1751		Re B
catalog no			CUSTOMER			sheet 3 of 7		









# Mouser Electronics

Authorized Distributor

Click to View Pricing, Inventory, Delivery & Lifecycle Information:

[FCI / Amphenol:](#)

[DDMF36W4S300N](#) [DAM7W2S300N](#) [DBM13W3S300N](#) [DBM17W2S300N](#) [DBM21W1S300N](#) [DBM9W4S300N](#)  
[DCM21WA4S300N](#) [DCM25W3S300N](#) [DDM24W7S300N](#) [DDM47W1S300N](#)