

REFERENCE SPECIFICATIONS

-NFC 93425 (in compliance with HE 507)

PHYSICAL CHARACTERISTICS

-INSULATOR MATERIAL: THERMOPLASTIC .UL94V0

-ACCESSORIES: BRASS

-SHELLS: STEEL

ELECTRICAL CHARACTERISTICS

-CONTACT/CONTACT : >=1000 V

-CONTACT/GROUND : >=1200 V

-INSULATION RESISTANCE: >=5000 MOhms

ENVIRONMENTAL CHARACTERISTICS

- CLIMATIC CATEGORY: 55/125/21

TEMPERATURE RANGE -55°C TO +125°C

DAMP HEAT STEADY STATE 21 DAYS

SALT SPRAY 24 HOURS

MECHANICAL CHARACTERISTICS

- RETENTION AGAINST TORQUE: - Threaded insert: 0.7 N.m minimum

- Female screw : 0.5 N.m minimum

Series

DBLSW5PA00LF

Shell size: E A B C

see sheet 2

Front accessory definition

see sheet 2

Blank : Without accessory

L : Threaded insert M3

O : Threaded insert UNC 4-40

V : Female screw UNC 4-40

Layout of contacts (see sheet 3)

Contacts

P :Pin

PCB accessory definition

A witout accessory on PCB

Power contacts

00 without power contact

See note RoHS

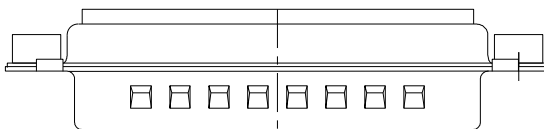
NOTE RoHS INFORMATION

- The "LF" products meet european union Directives and other country regulations as described in GS-22-008.

- Shell plating :2 to 4 µm Cu + Ni + 3 to 10 µmm Sn(pure bright)

- Accessories: Sn pure bright + nickel

- Packaging spec: See GS-14-920



rev	ecn no	dr	date
A	LS05-0113	MPE	2005-11-28
B	LS06-0208	LGO	2006-12-13
C	LS07-0273	MPE	2007-11-05
D	F09-0076	LSA	2009-08-20
E	F10-0017	LSA	2010-03-10
-	-	-	-
-	-	-	-

www.fciconnect.com			surface ISO 1302	-	tolerance std ISO 406	ISO 1101	projection ⊕	mm
Dr	M PESSON	2005-10-11	TOLERANCES UNLESS OTHERWISE SPECIFIED				size	Scale
Eng	P LEGARE	2005-10-11	ANGULAR	LINEAR	0.X	±0.3	A2	2:1
Chr			0°	±2°	0.XX	±0.1	ECN	F09-0076
Appr			0.XXX	±0.05	Product family			
							-	Spec ref
FCI			title			dwg no	Rev.	
			SUB MALE DW			C01-8639-2315	E	
			full power without contact					
			catalog no			-	CUSTOMER	sheet 1 of 4

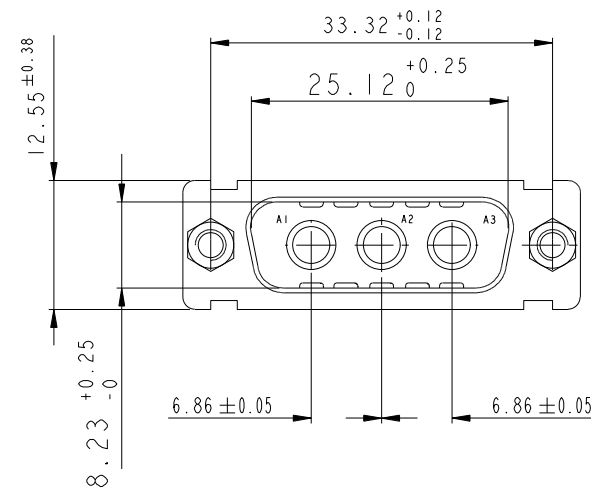
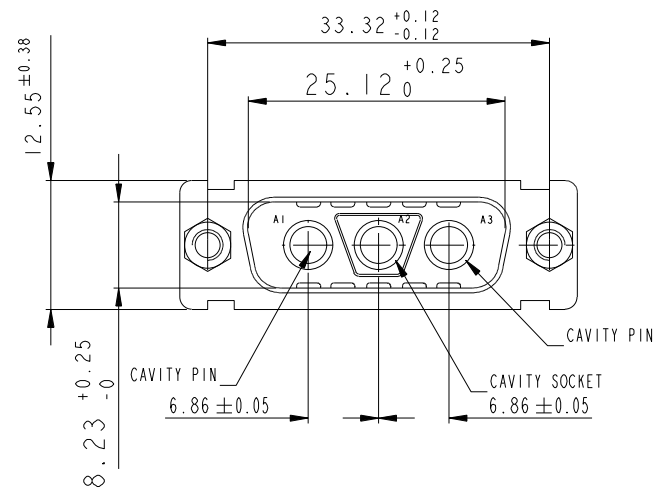
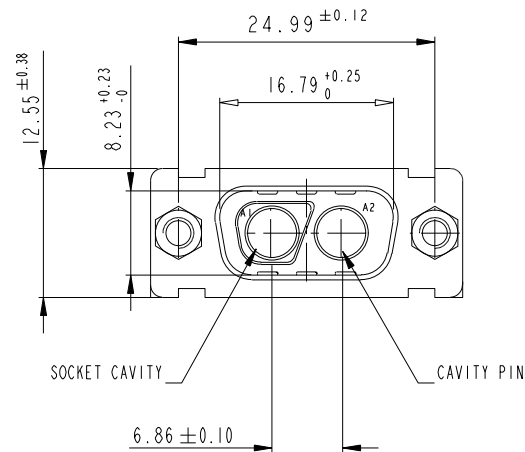
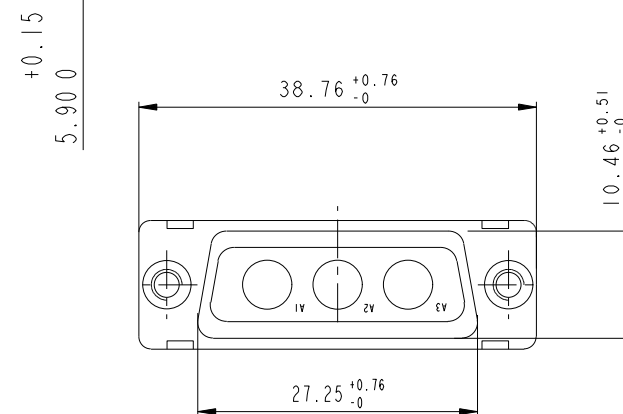
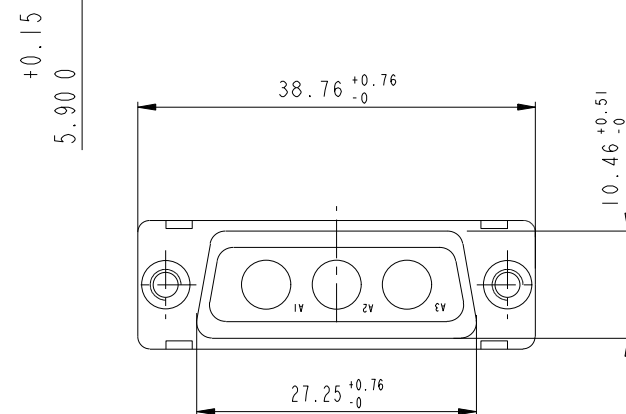
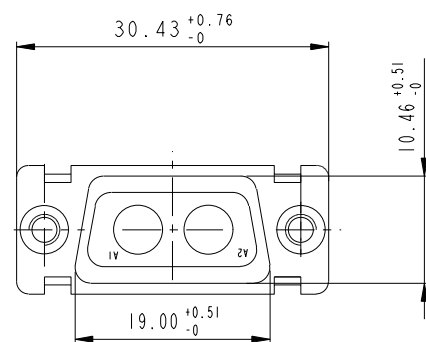
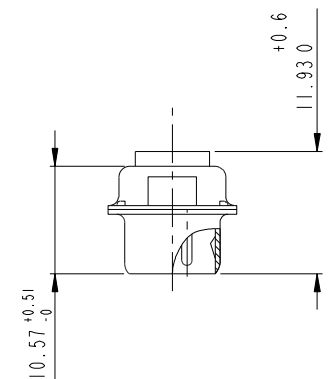
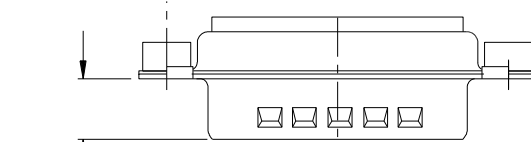
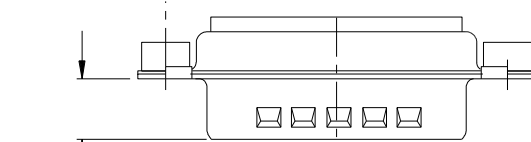
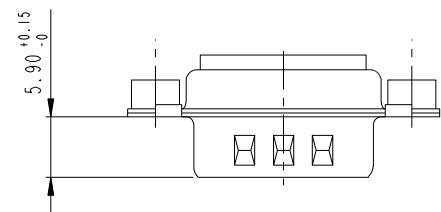



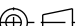


www.fciconnect.com			surface ISO 1302			tolerance std ISO 406 ISO 1101		projection 				
			TOLERANCES UNLESS OTHERWISE SPECIFIED									
Dr	M PESSON	2005-10-11	ANGULAR	LINEAR	0.X		±0.3	size A2	Scale 2:1			
Eng	P LEGARE	2005-10-11			0.XX		±0.1					
Chr					0.XXX		±0.05					
Appr			0°		±2°			ECN		F09-0076		
			Product family				-	Spec ref				
		title SUB MALE DW				dwg no C01-8639-2315				Rev. E		
		full power without contact										
		catalog no				-	CUSTOMER		sheet 2 of 4			

2V2

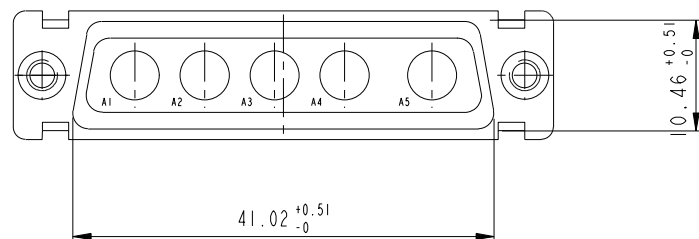
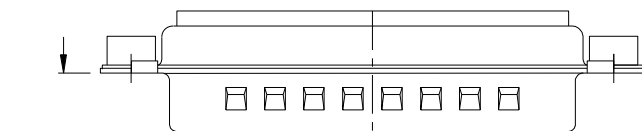
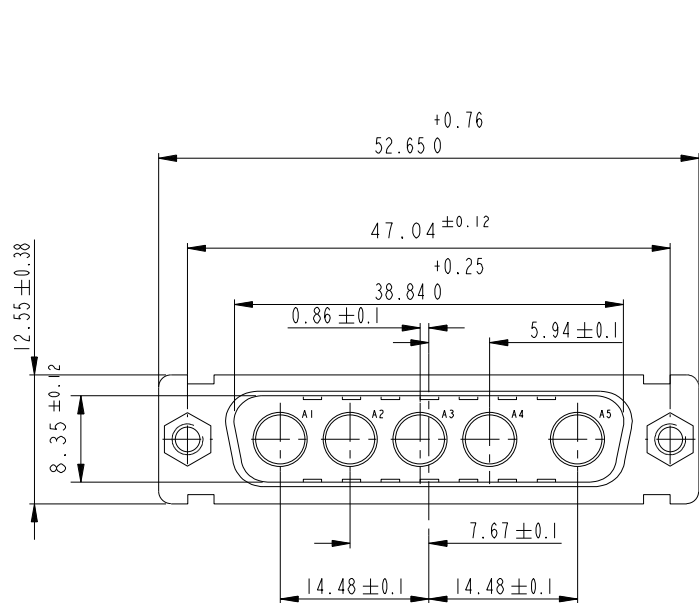
3V3

3W3

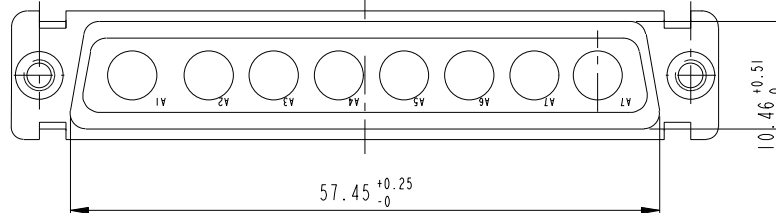
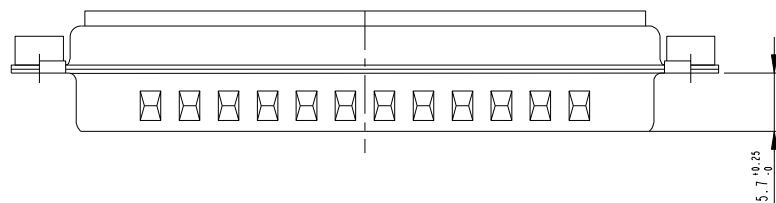
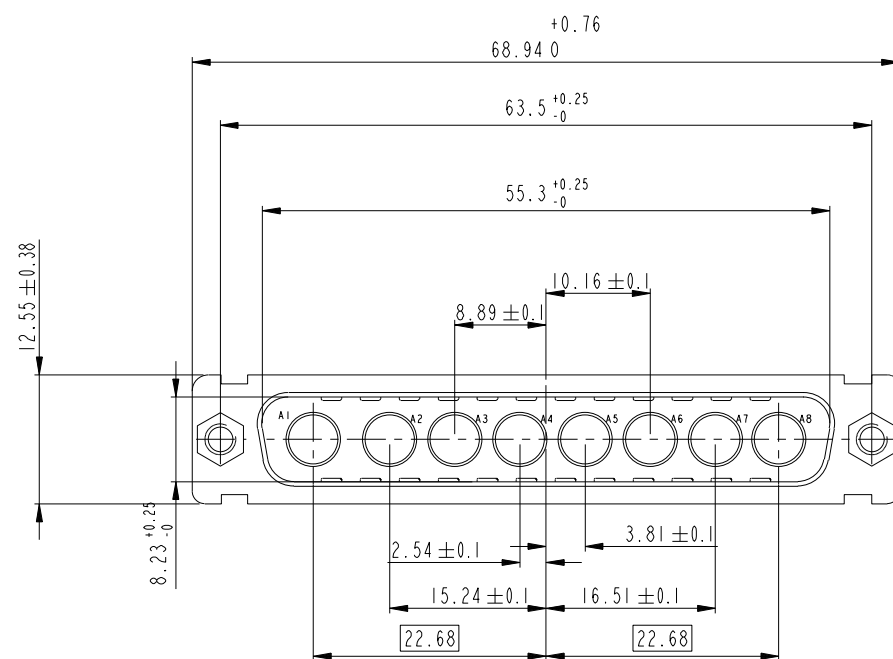
SIDE VIEW FOR
LAYOUTS: E A B C




www.fciconnect.com			surface - 		tolerance std		projection		mm		
			ISO 1302		ISO 406 ISO 1101						
			TOLERANCES UNLESS OTHERWISE SPECIFIED								
Dr	M PESSON	2005-10-11	ANGULAR	LINEAR	0.X	±0.3	size	A2	Scale		
Eng	P LEGARE	2005-10-11			0.XX	±0.1			2:1		
Chr			0° ±2°		0.XXX	±0.05	ECN		F09-0076		
Appr			Product family				-	Spec ref			
			title				dwg no		Rev.		
			SUB MALE DW				C01-8639-2315		E		
			full power without contact								
			catalog no				-	CUSTOMER		sheet 3 of 4	

5W5



8W8



www.fciconnect.com			surface ISO 1302		tolerance std ISO 406 ISO 1101		projection 		mm 	
			TOLERANCES UNLESS OTHERWISE SPECIFIED							
Dr	M PESSON	2005-10-11	ANGULAR	LINEAR	0.X ±0.3		size	Scale		
Eng	P LEGARE	2005-10-11			0.XX ±0.1		A2		2:1	
Chr					0.XXX ±0.05		ECN		F09-0076	
Appr			Product family						- Spec ref	
			title SUB MALE DW full power without contact				dwg no C01-8639-2315		Rev.	
									E	
			catalog no				-	CUSTOMER		sheet 4 of 4

Mouser Electronics

Authorized Distributor

Click to View Pricing, Inventory, Delivery & Lifecycle Information:

[Amphenol:](#)

[DAO3V3PA00LF](#) [DAO3W3PA00LF](#) [DAV3V3PA00LF](#) [DBL5W5PA00LF](#) [DCL8W8PA00LF](#) [DAL3V3PA00LF](#)
[DAL3W3PA00LF](#) [DBO5W5PA00LF](#) [DEO2V2PA00LF](#) [DCV8W8PA00LF](#) [DEL2V2PA00LF](#)