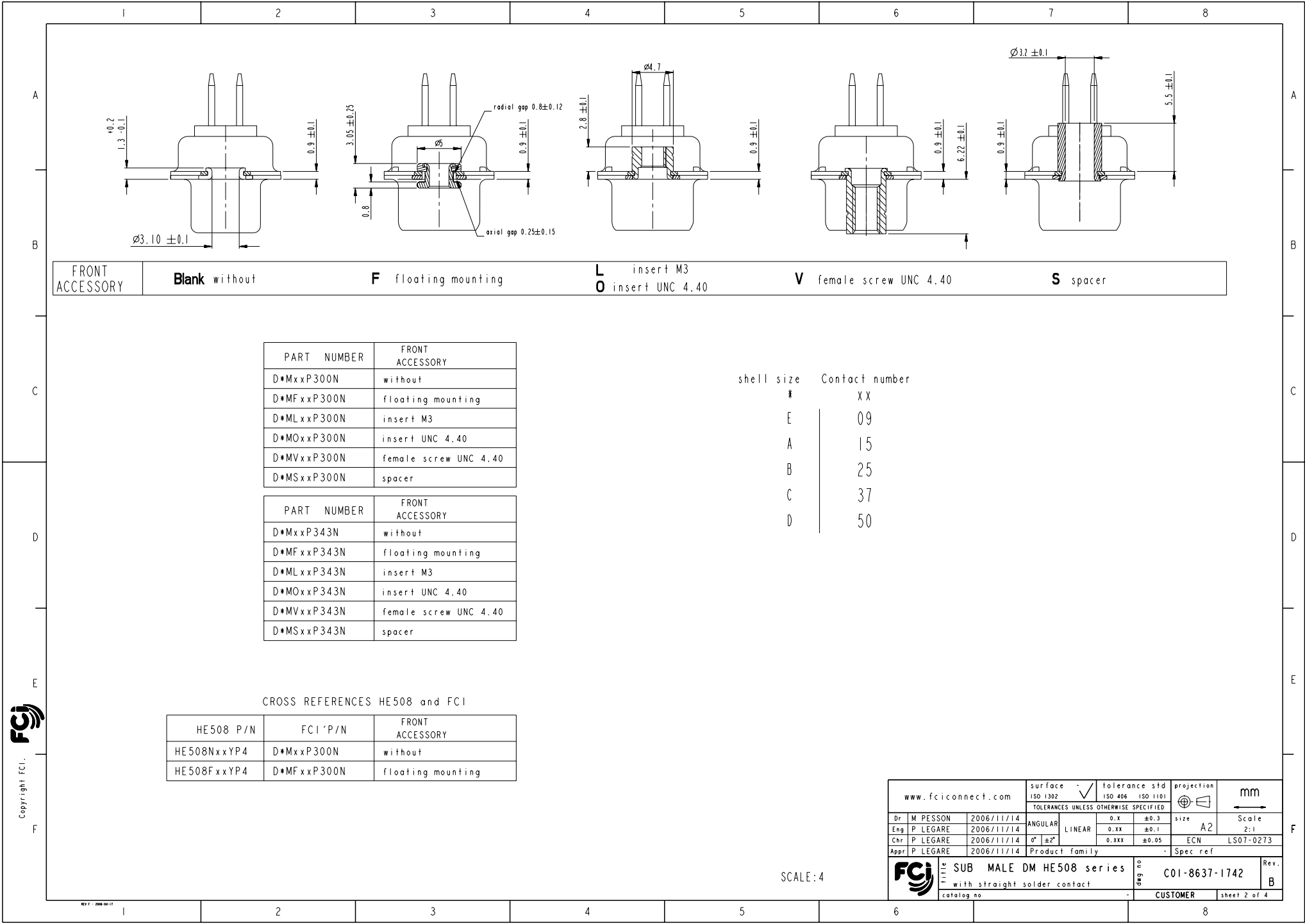


Printed: Jun 17, 2015 Printed: Jun 18, 2015



FRONT ACCESSORY	Blank without	F floating mounting	L insert M3 O insert UNC 4.40	V female screw UNC 4.40	S spacer
-----------------	---------------	---------------------	----------------------------------	-------------------------	----------

PART NUMBER	FRONT ACCESSORY
D*MxxP300N	without
D*MFxxP300N	floating mounting
D*MLxxP300N	insert M3
D*MOxxP300N	insert UNC 4.40
D*MVxxP300N	female screw UNC 4.40
D*MSxxP300N	spacer

PART NUMBER	FRONT ACCESSORY
D*MxxP343N	without
D*MFxxP343N	floating mounting
D*MLxxP343N	insert M3
D*MOxxP343N	insert UNC 4.40
D*MVxxP343N	female screw UNC 4.40
D*MSxxP343N	spacer

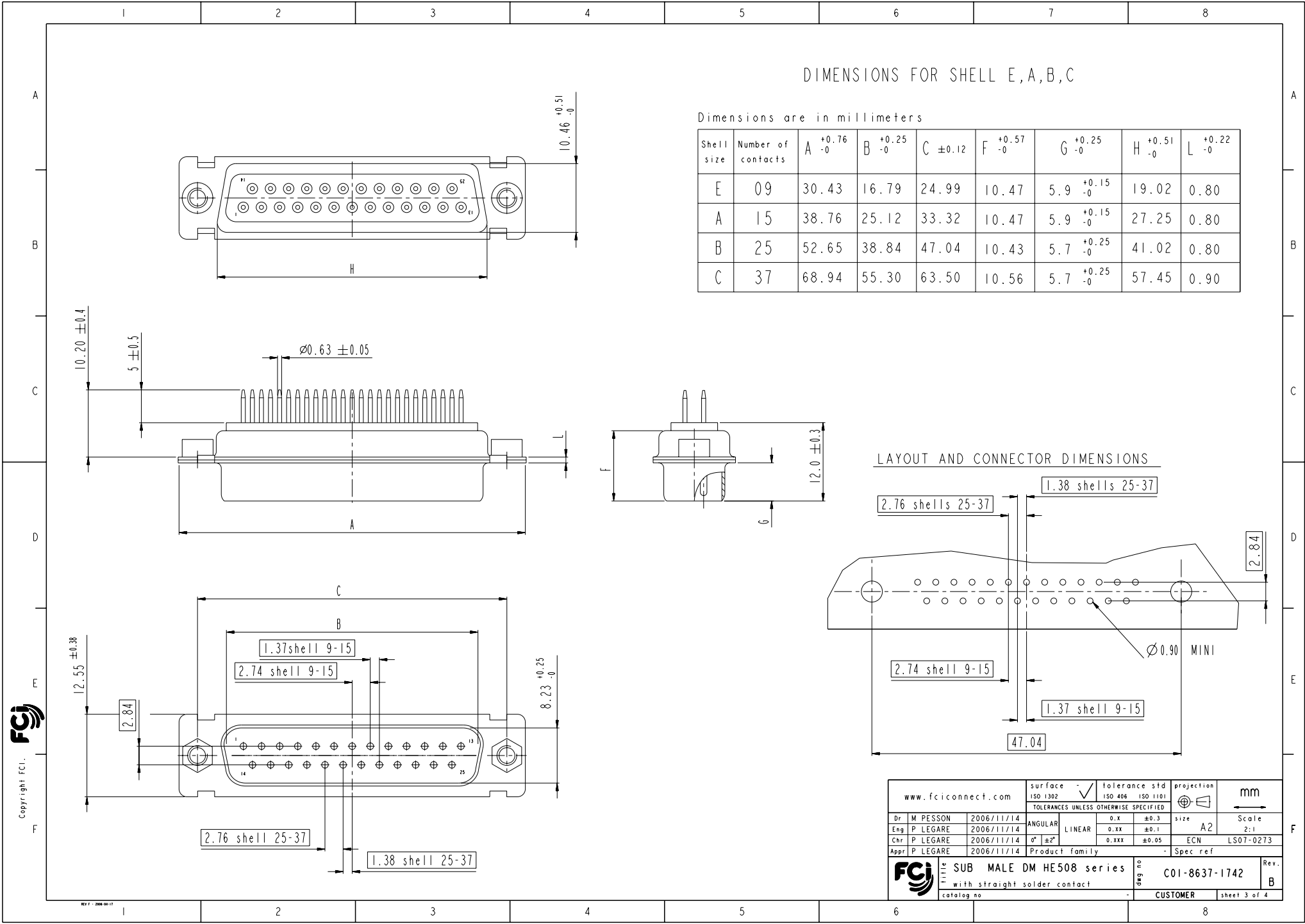
shell size	Contact number
X	XX
E	09
A	15
B	25
C	37
D	50

CROSS REFERENCES HE508 and FC1

HE508 P/N	FC1 P/N	FRONT ACCESSORY
HE508NxxYP4	D*MxxP300N	without
HE508FxxYP4	D*MFxxP300N	floating mounting

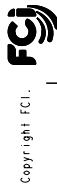
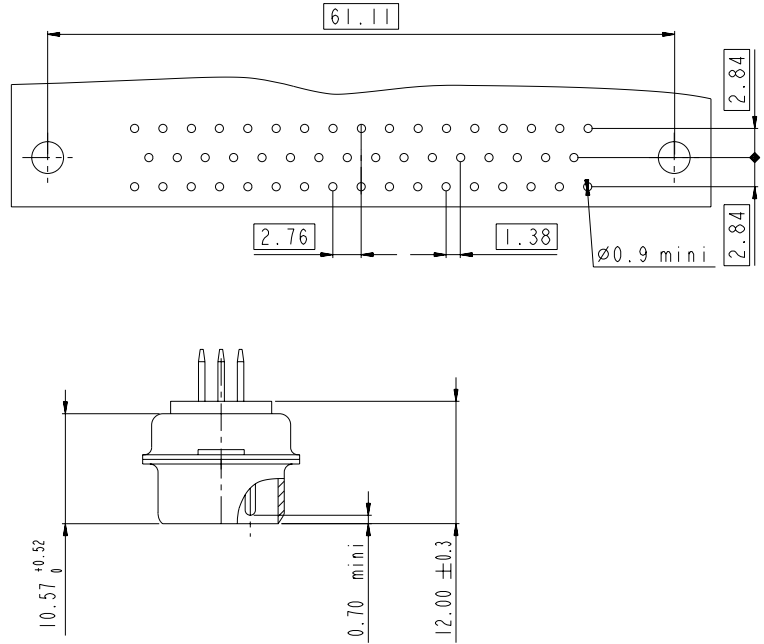
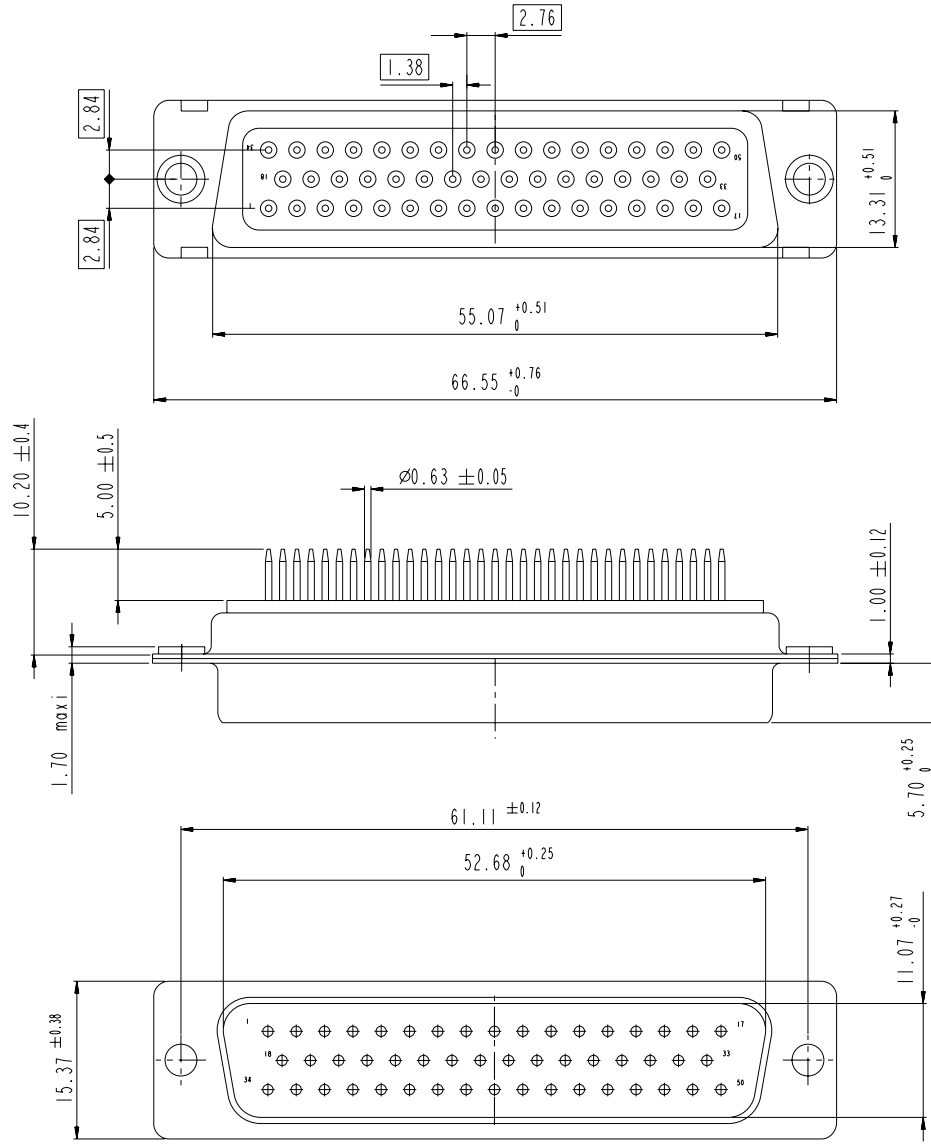
SCALE: 4

www.fciconnect.com		surface ISO 1302	tolerance std ISO 406 ISO 1101	projection size A2	mm Scale 2:1
Dr M PESSON 2006/11/14		TOLERANCES UNLESS OTHERWISE SPECIFIED		ECN LS07-0273	
Eng P LEGARE 2006/11/14	ANGULAR	0.X	±0.3	Spec ref	
Chr P LEGARE 2006/11/14	LINEAR	0.XX	±0.1	Product family	
Appr P LEGARE 2006/11/14	0° ±2°	0.XXX	±0.05	SUB MALE DM HE508 series	
Title with straight solder contact		cat no		Rev. B	sheet 2 of 4



DIMENSIONS FOR SHELL SIZE D (50 CONTACTS)

LAYOUT AND CONNECTOR DIMENSIONS



www.fciconnect.com		surface	ISO 1302	tolerance std	ISO 406	ISO 1101	projection	mm
		TOLERANCES UNLESS OTHERWISE SPECIFIED					size	Scale
Dr	M PESSON	2006/11/14	ANGULAR	0.X	± 0.3		A2	2:1
Eng	P LEGARE	2006/11/14	LINEAR	0.XX	± 0.1		ECN	LS07-0273
Chr	P LEGARE	2006/11/14	$0^\circ \pm 2^\circ$	0.XXX	± 0.05		Spec ref	
Appr	P LEGARE	2006/11/14	Product family					
SUB MALE DM HE508 series		Title		with straight solder contact		C01-8637-1742		Rev.
catalog no						CUSTOMER		B
						sheet 4 of 4		

Mouser Electronics

Authorized Distributor

Click to View Pricing, Inventory, Delivery & Lifecycle Information:

[FCI / Amphenol:](#)

[DEM09P300N](#) [DAM15P300N](#) [DBM25P300N](#) [DBMF25P300N](#) [DCM37P300N](#) [DDM50P300N](#)