



Copyright FCI

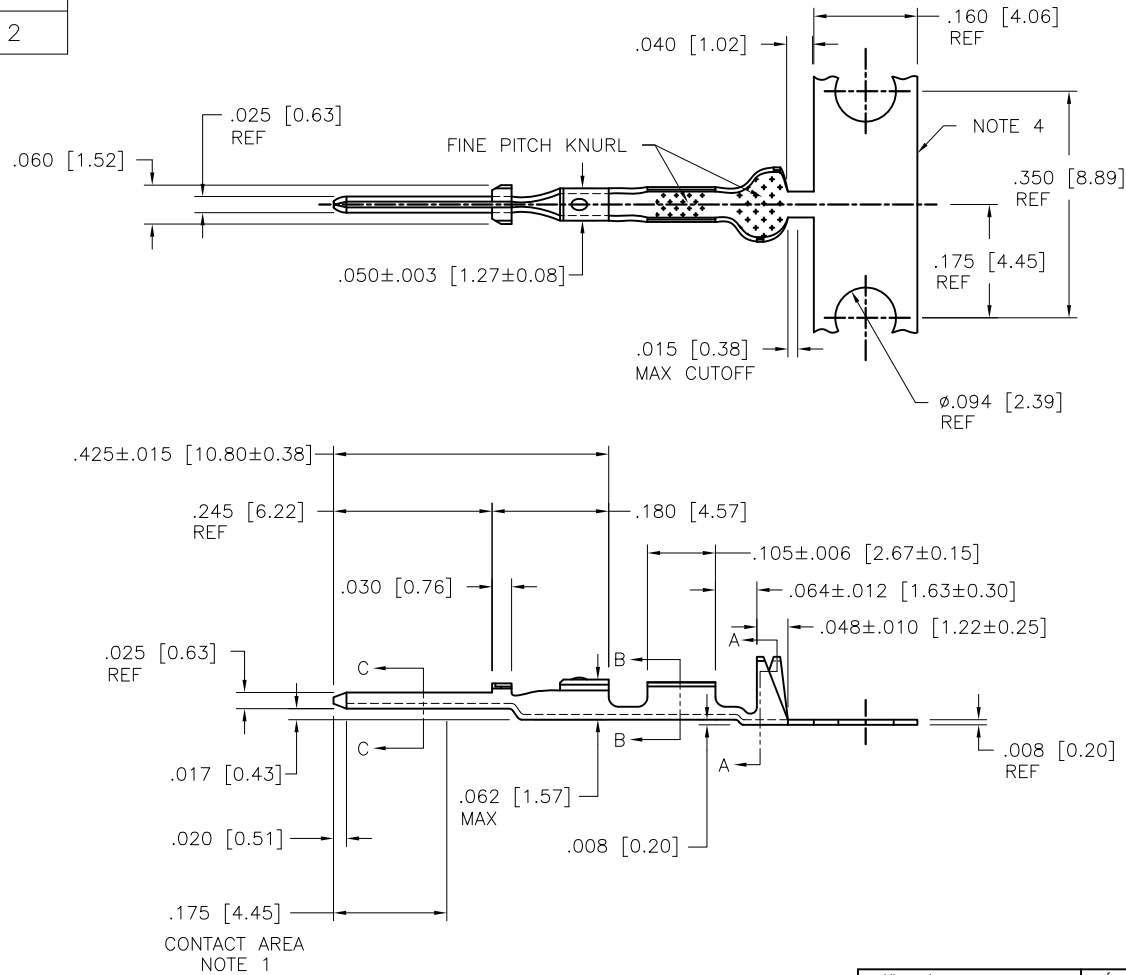


FCIconnect.com



PRODUCT NUMBER

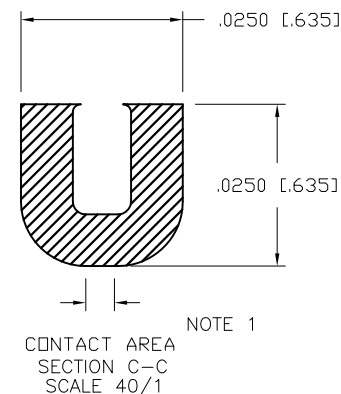
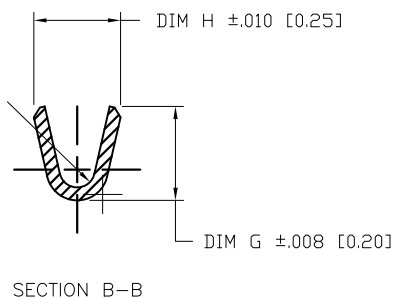
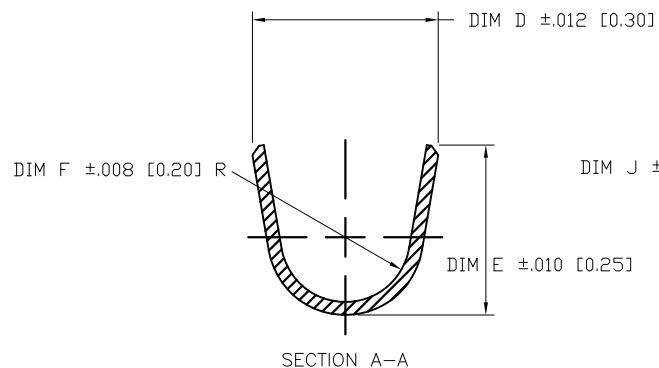
SEE SHEET 2



mat'l. code				surface		tolerance	projection	product family		
SEE TABLE								PV TERMINALS		
ltr	ec'n no	dr	date	tolerances unless otherwise specified				title		
H	V09-0453	HTB	2009-10-15	angles	XX*01/XX*3	INCH/MM	scale 4:1	DUPLEX CTW MALE PIN		
-	-	-	-							
C	V41706	SAR	1994-12-13	0°±2'	XXXX*0020/XXX*051			dwg no sheet 1 of 3 size		
D	V04-1158	TAB	2004-12-06	dr	M. CLOUSER	1994-08-22		76808 A4		
E	V05-0281	HTB	2005-04-14	engr	T. HANNA	1994-08-22		CUSTOMER Drawing		
F	V06-0624	HTB	2006-06-30	chr	T. HANNA	1994-08-22				
G	V08-0114	HTB	2008-04-01	appd	T. HANNA	1994-08-22				
sheet	revision	H	H	H						
index	sheet	1	2	3						

form: A4mmXLC

PRODUCT NUMBER		LOOSE PIECE PRODUCT NUMBER	AWG	PLATING	DIM D	DIM E	DIM F	DIM G	DIM H	DIM J
REELED FOR APPLICATION MACHINES FEEDING										
RIGHT – LEFT	LEFT – RIGHT									
76808–001	76808–004	76808–007	O B S O L E T E							
76808–001LF	76808–004LF	76808–007LF	28–32	NOTE 7	.115 [2.92]	.105 [2.67]	.040 [1.02]	.058 [1.47]	.054 [1.37]	.011 [0.28]
76808–002	76808–005	76808–008	O B S O L E T E							
76808–002LF	76808–005LF	76808–008LF (OBS)	22–26	NOTE 7	.139 [3.53]	.120 [3.05]	.050 [1.27]	.065 [1.65]	.070 [1.78]	.017 [0.43]
76808–003	76808–006	76808–009	O B S O L E T E							
76808–003LF	76808–006LF	76808–009LF	18–20	NOTE 7	.139 [3.53]	.120 [3.05]	.050 [1.27]	.083 [2.11]	.104 [2.64]	.021 [0.53]



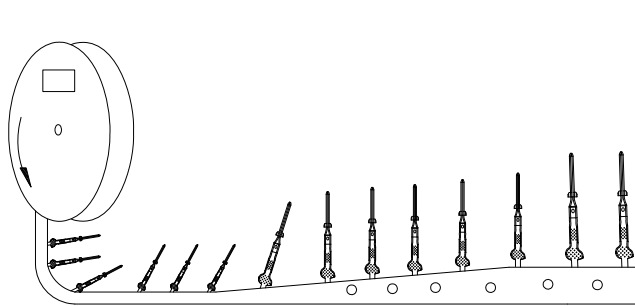
NOTES:

- ① PLATING: 50u"/1.27u MIN. Ni UNDERPLATE OVER ENTIRE TERMINAL. OVERPLATE 30u"/0.76 MIN. Au IN CONTACT AREA. 50u"/1.27u MIN. TIN-LEAD IN CRIMPING AREA.
- ② TERMINAL MAY BE USED WITH MINI LATCH HOUSING.
- ③ APPLICABLE SPECIFICATION:
A. BUS-12-098 PRODUCT SPECIFICATION.
B. TA-211 CRIMP SPECIFICATION.
- ④ FOR MANUFACTURING PURPOSES ONLY.
- ⑤ PRODUCT MEETS EUROPEAN UNION DIRECTIVES AND OTHER COUNTRY REGULATIONS AS DESCRIBED IN GS-22-008.
- ⑥ THIS PRODUCT IS NOT INTENDED TO BE EXPOSED TO MANUFACTURING SOLDERING PROCESSES.
- ⑦ PLATING: 50u"/1.27u MIN. Ni UNDERPLATE OVER ENTIRE TERMINAL. OVERPLATE 30u"/0.76 MIN. Au IN CONTACT AREA. 50u"/1.27u MIN. TIN IN CRIMPING AREA.

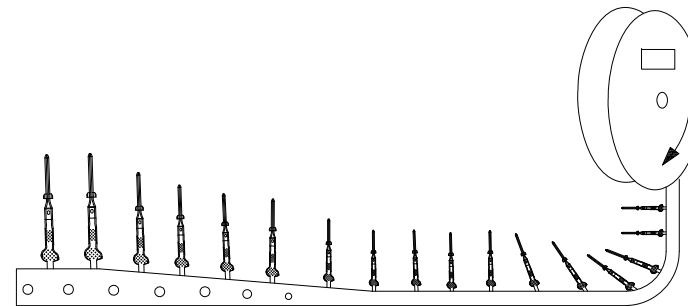
mat'l. code				surface		tolerance	projection	product family	
SEE TABLE				✓				PV TERMINALS	
ltr	ecm no	dr	date	tolerances unless otherwise specified				title	
H				angles		XX*.01/X*.3		INCH/MM	
				0° ± 2°		XXX*.005/XX*.13			
						XXXX*.0020/XXX*.051	scale 10:1	dwg no	
				dr	M. CLOUSER	1994-08-22		sheet 2 of 3	
				engr	T. HANNA	1994-08-22		76808	
				chr	T. HANNA	1994-08-22		size	
				appd	T. HANNA	1994-08-22		A4	
sheet index	revision sheet							type	
								CUSTOMER Drawing	

PRODUCT NUMBER

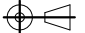

SEE SHEET 2



Unreeling Direction
Left to Right Into
Applicator



Unreeling Direction
Right to Left Into
Applicator

mat'l. code SEE TABLE				surface	tolerance	projection	product family PV TERMINALS		
ltr	ecrn no	dr	date	tolerances unless otherwise specified			title		
H				angles	$.XX \pm .01 / X \pm .3$	INCH/MM	DUPLEX CTW MALE PIN		
					$.XXX \pm .005 / XX \pm .13$				
				$0' \pm .2'$	$.XXXX \pm .0020 / XXX \pm .051$	scale 1:1	dwg no		
				dr	M. CLOUSER	1994-08-22	sheet 3 of 3		
				engr	T. HANNA	1994-08-22	76808		
				chr	T. HANNA	1994-08-22			
				appd	T. HANNA	1994-08-22			
sheet index	revision sheet						type		
							CUSTOMER Drawing		

Mouser Electronics

Authorized Distributor

Click to View Pricing, Inventory, Delivery & Lifecycle Information:

[FCI / Amphenol:](#)

[76808-005LF](#)