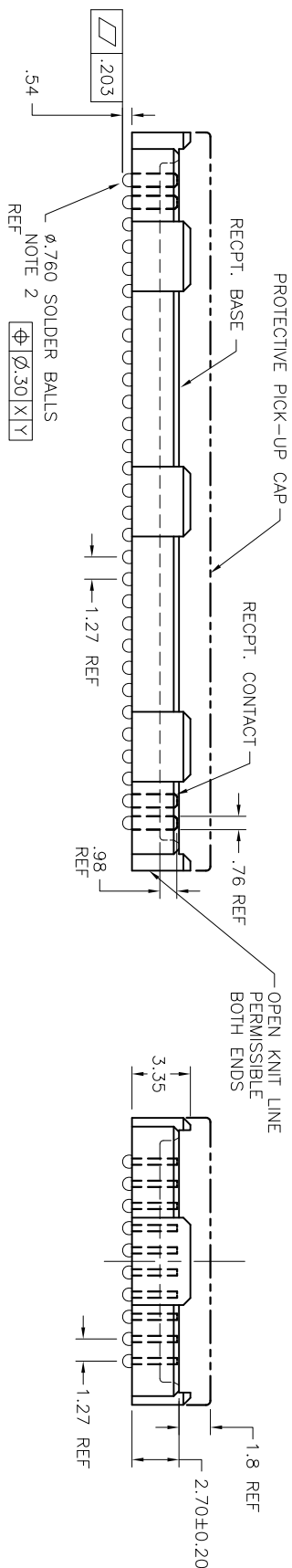
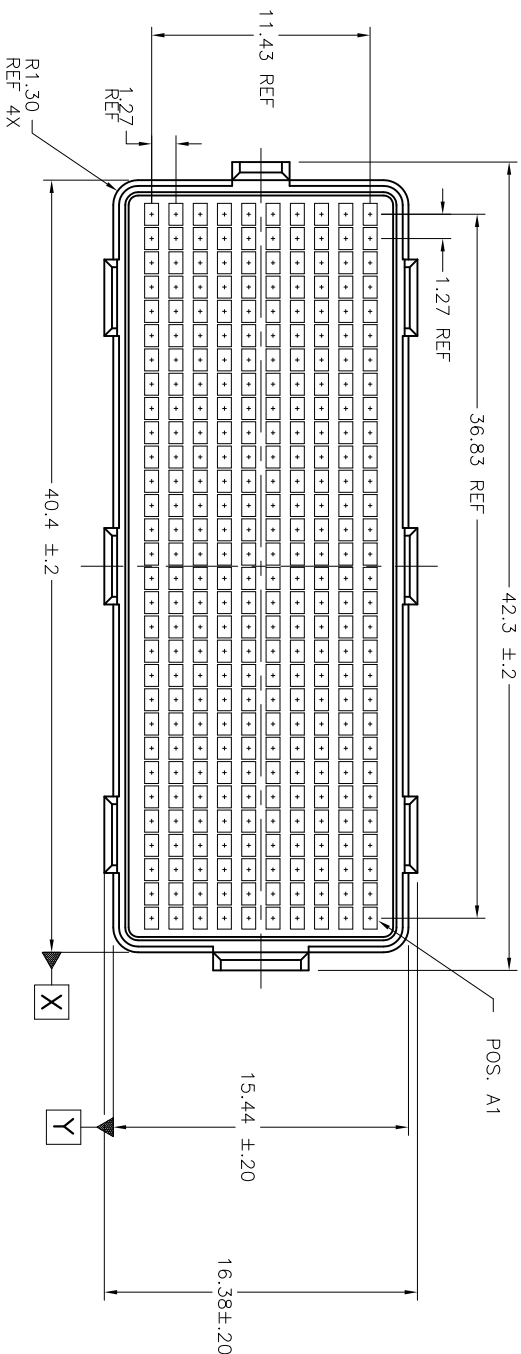


PRODUCT NUMBER
SEE TABLE

1 2

3

4



mat'l. code	SEE NOTE 1	surface	tolerance	projection	product family	title
lfr	ecm no.	dr	date	ASME Y14.5	ASME Y14.5	
K	Y06-0560	LP	2006-07-8	angles	3x3	
L	V11-0028	HTB	2011-06-02	angles	3x3	
M	V-012333	RE	2002-07-30	0' ±.2'	XXX.051	
N	V-13453	DCI	2012-11-14	dr	D. WAUGHEN	1999-12-8
P	V-13453	DCI	2012-12-06	brqj	D. HARPER	1999-12-8
R	V-18087	DCI	2014-02-25	cltr	D. HARPER	1999-12-8
-	-	-	-	apdd	D. HARPER	1999-12-8
sheet	revision	R	R	R	R	
index	sheet	1	2	3	4	



Type

Drawing no

84501

sheet 1 of 4

size

A4

CUSTOMER Drawing

B

form: ArrayMLC

1

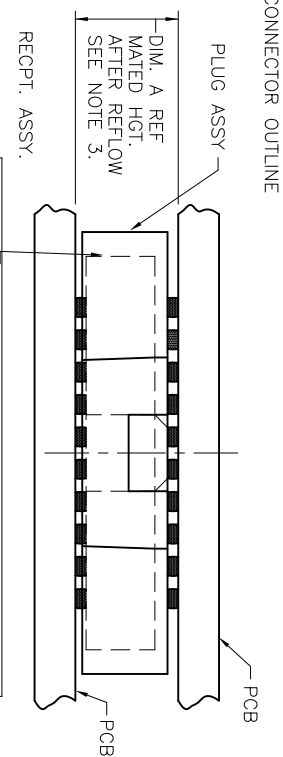
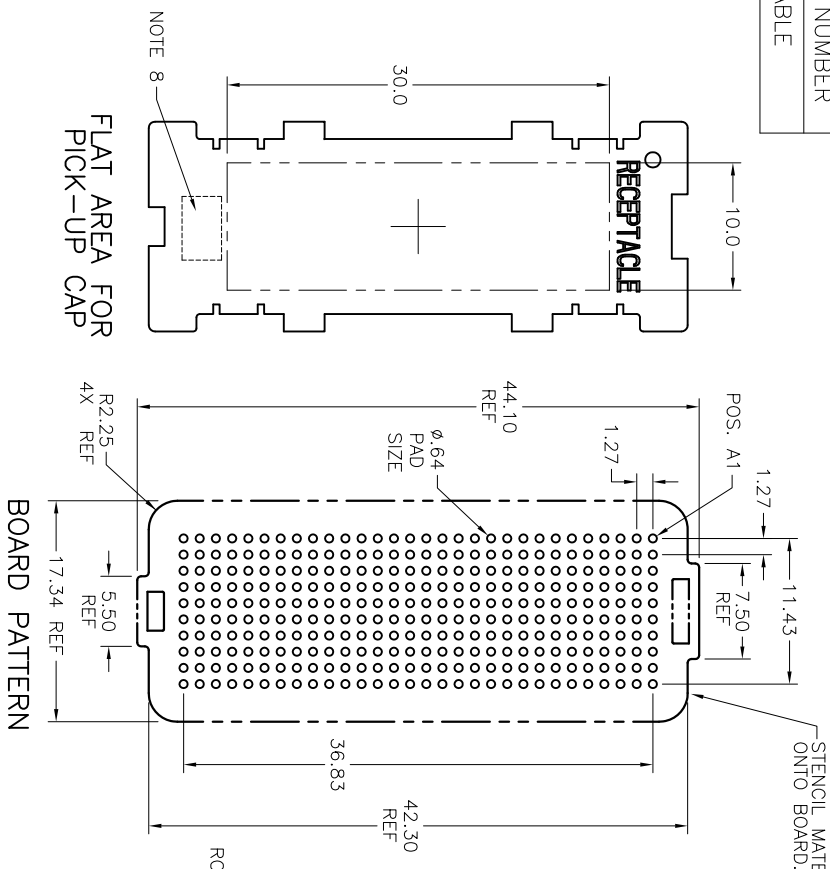
2

3

4

A

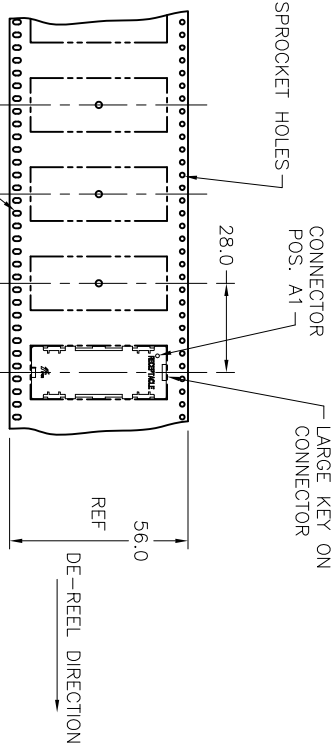
A



MATED HEIGHT TABLE		
DIM. A	PLUG ASSY. P/N	RECP. ASSY. P/N
4.0	8-4500	8-4501
10.0	8-4578	8-4501




MATED HEIGHT AFTER REFLOW IS BASED ON Ø.64mm PAD (METAL-DEFINED) AND .13mm SOLDER PASTE STENCIL THICKNESS. SEE NOTE 3.

END VIEW - MATED CONNECTORS SCALE NONE



ELONGATED SPROCKET HOLES—TAPE & REEL PACKAGING

PER EIA 481-3
SCALE NONE

mat'l code		surface		tolerance		projection		product family	
SEE NOTE 1		ASME Y14.5		✓ ASME Y14.5				MEG--ARRAY	
lth	ecrn no	dr	date	tolerances unless otherwise specified				title	
R				angles				4mm RECEPTACLE ASSEMBLY	
				0' ±.2'		MM		10 X 30 = 300 POS.	
				XXX-051		scale 2:1			
		dr		D. WAUGHEN				dwg no	
				1998-12-16				sheet 2 of 4	
				EJUNG D. HARPER				size	
				1998-12-16				A4	
				CHN D. HARPER					
				1998-12-16					
				apnd D. HARPER					
				1998-12-16					
sheet index		revision						type	
sheet		sheet						CUSTOMER Drawing	

PRODUCT NUMBER	PICK-UP CAP (NATURAL OR BLACK IN COLOR)	CONTACT PLATING AND THICKNESS	SOLDER BALL	NOTES
84501-001	YES	15µ" (.38µm) Au	SnPb	
84501-001LF	YES	15µ" (.38µm) Au	LEAD FREE	6
84501-091	YES	15µ" (.38µm) GXT	SnPb	
84501-091LF	YES	15µ" (.38µm) GXT	LEAD FREE	6
84501-093LF	YES	15µ" (.38µm) GXT	LEAD FREE	6 , 11
84501-101	YES	30µ" (.76µm) Au	SnPb	
84501-101LF	YES	30µ" (.76µm) Au	LEAD FREE	6
84501-191	YES	30µ" (.76µm) GXT	SnPb	
84501-191LF	YES	30µ" (.76µm) GXT	LEAD FREE	6
84501-201	YES	50µ" (1.27µm) Au SPECIAL	SnPb	4
84501-201LF	YES	50µ" (1.27µm) Au SPECIAL	LEAD FREE	4 AND 6
84501-291	YES	50µ" (1.27µm) GXT SPECIAL	SnPb	4
84501-291LF	YES	50µ" (1.27µm) GXT SPECIAL	LEAD FREE	4 AND 6
84501-A01	YES	30µ" (.76µm) Au SPECIAL	SnPb	7
84501-A01LF	YES	30µ" (.76µm) Au SPECIAL	LEAD FREE	6 & 7
84501-301	YES	15µ" (.38µm) Au SPECIAL	SnPb	7
84501-301LF	YES	15µ" (.38µm) Au SPECIAL	LEAD FREE	6 & 7
84501-401	YES	30µ" (.76µm) Au SPECIAL	SnPb	7
84501-401LF	YES	30µ" (.76µm) Au SPECIAL	LEAD FREE	6 & 7
84501-501	YES	Au SPECIAL	SnPb	4 & 7
84501-501LF	YES	Au SPECIAL	LEAD FREE	4, 6 & 7

mat'l. code		SEE NOTE 1		surface		tolerance		projection		product family	
litr	ecn no	dfr	date	ASPC Y14.5		ASPC Y14.5				MEG-ARRAY	
				angles unless otherwise specified						title	
				angles		XXX-13		MM		4mm RECEPTACLE ASSEMBLY	
				Dfr		D. WAUGHEN 1998-12-6		Scale 2:1		dwg no	
				ENGR		D. HARPER 1998-12-6				sheet 3 of 4	
				Dfr		D. HARPER 1998-12-6				size	
				apdd		D. HARPER 1998-12-6				A4	
sheet		revision								CUSTOMER Drawing	
index		sheet									

NOTES:

① MATERIAL

HOUSING: LCP
CONTACT: COPPER ALLOY

PLATING

CONTACT: (SEE TABLE ON SHEETS)
SOLDER BALL: (SEE TABLE ON SHEETS)
EUTECTIC SnPb OR LEAD FREE
95.5Sn/4Ag/0.5Cu

2. SOLDER BALLS WILL NOT BE PERFECT SPHERICAL SHAPE DUE TO REFLOW ATTACHMENT.



3. MATED HEIGHT EFFECTED BY CUSTOMER'S PCB PAD SIZE, PLATING, SOLDER REFLOW PROFILE, & SOLDER PASTE.

4. PLATING FOR –2XX SERIES PRODUCT NUMBERS MEET THE REQUIREMENTS OF GR-1217-CORE. CENTRAL OFFICE ENVIRONMENT, (25 YEAR LIFE EXPECTANCY), THE CONTACTS IN THESE PRODUCT NUMBERS ALSO HAVE SPECIAL CONTACT GEOMETRY

5. FOR PROPER APPLICATION FOLLOW FCi APPLICATION SPECIFICATION GS-20-033 LEAD FREE SOLDER BALLS WILL NOT SOLDER PROPERLY IN A LEADED SOLDER PROCESS DUE TO A HIGHER REFLOW TEMPERATURE. LEAD FREE PRODUCT IS THEREFORE NOT BACKWARDS COMPATIBLE WITH LEADED OR SOME SOLDERING APPLICATIONS. REFERENCE FCi APPLICATION SPECIFICATION.

6. THIS PRODUCT MEETS EUROPEAN UNION DIRECTIVES AND OTHER COUNTRY REGULATIONS AS DESCRIBED IN GS-47-0004 PRODUCT MEETING. THIS DIRECTIVE IS IDENTIFIED IN THE LOT CODE NUMBER MARKED ON EACH PART BY HAVING AN "X" IN THE SEVENTH CHARACTER POSITION.

7. 84501-A01 AND -A01LF ARE CUSTOMER SPECIALS.

mat'l. code			surface		tolerance		projection		product family		
SEE NOTE 1			ASME Y4.5 ✓		ASME Y4.5				MEG-ARRAY		
lfr	ecn no	dr	date	tolerances unless otherwise specified						title	
R				angles		X-3		MM		4mm RECEPTACLE ASSEMBLY	
				linear		XX+B XX-B				10 X 30 = 300 POS.	
				0' ± 2"		XXX-051		scale 2:1			
				dr	D. WAUGHEN		1799-12-16		dwg no		
				ENGR	D. HARPER		1799-12-16		sheet 4 of 4		
				CHP	D. HARPER		1799-12-16		size		
				apprd	D. HARPER		1799-12-16		A4		
sheet index	revision								type		
	sheet								CUSTOMER Drawing		

Mouser Electronics

Authorized Distributor

Click to View Pricing, Inventory, Delivery & Lifecycle Information:

[FCI / Amphenol:](#)

[84501-A01](#)