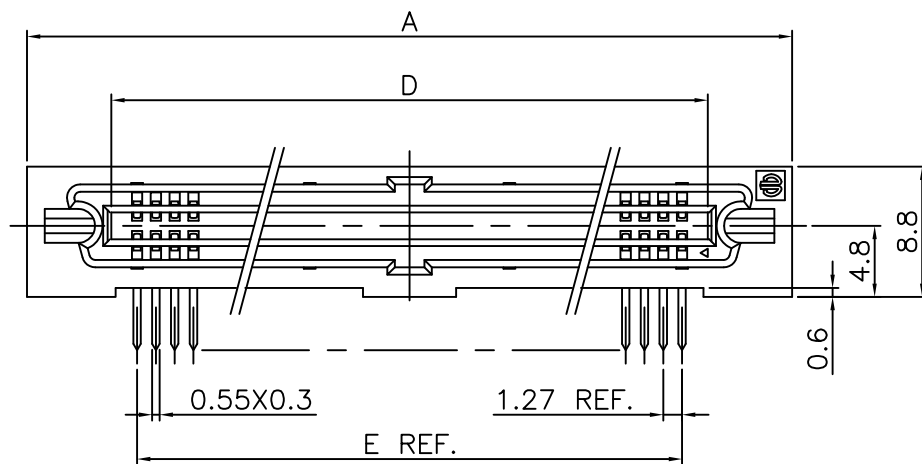
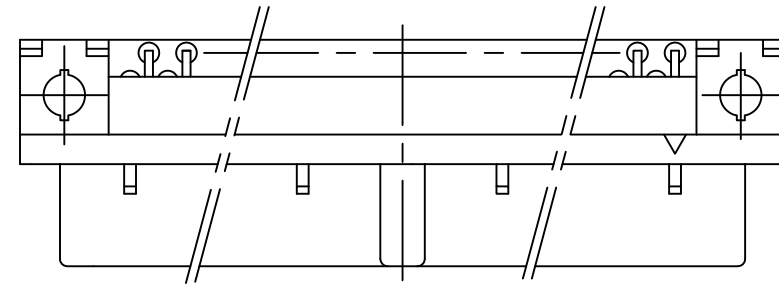
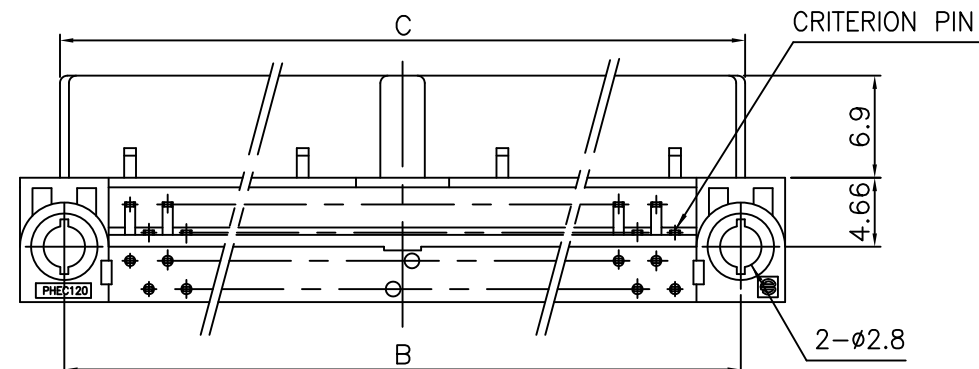


PRODUCT NO.

JSC 97409



NO. OF CONTACTS:40,60,68,80,100,120

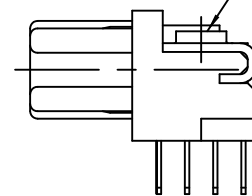


NOTES

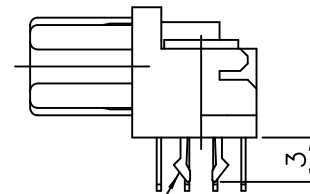
- 1.BODY, LOCATOR MATERIAL : PBT GLASS FILLED (UL94V-0), COLOR BLACK
- 2.TERMINAL MATERIAL : PHOSPHOR BRONZE
- 3.MOUNTING LATCH MATERIAL : PHOSPHOR BRONZE
- 4.SCREW NUT : STEEL
- 5.TERMINAL FINISH
CONTACT AREA : GOLD 0.25 μ m min. OVER NICKEL UNDERLAYER
SOLDER TAILS : PURE Sn 2 μ m min. OVER NICKEL UNDERLAYER
- 6.MOUNTING LATCH FINISH : PURE Sn 2 μ m min. OVER NICKEL UNDERLAYER
- 7.SCREW NUT FINISH : NICKEL
- 8.THIS PRODUCT MEETS EUROPEAN UNION DIRECTIVES AND OTHER COUNTRY REGULATIONS AS DESCRIBED IN GS-22-008
- 9.THE HOUSING WILL WITHSTAND EXPOSURE TO 260 DEGREE PEAK TEMPERATURE FOR 10 SECONDS IN A WAVE SOLDER APPLICATION WITH A 1.6mm MINIMUM THICK CIRCUIT BOARD.

SCREW NUT

M2.6

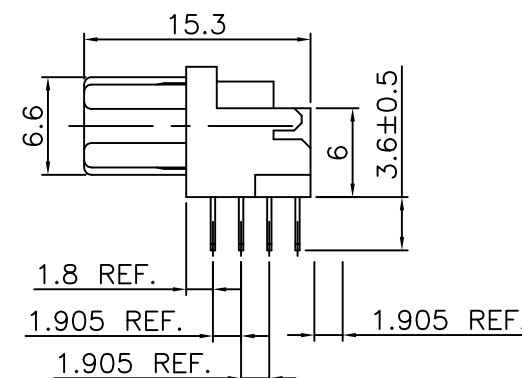


PHEC___R-R212 Obsolete



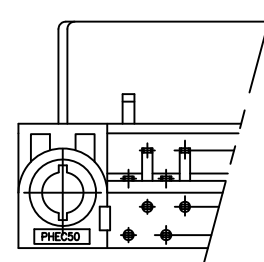
MOUNTING LATCH

PHEC___R-R211



PHEC___R-R210

NO. OF CONTACTS:30,34,50

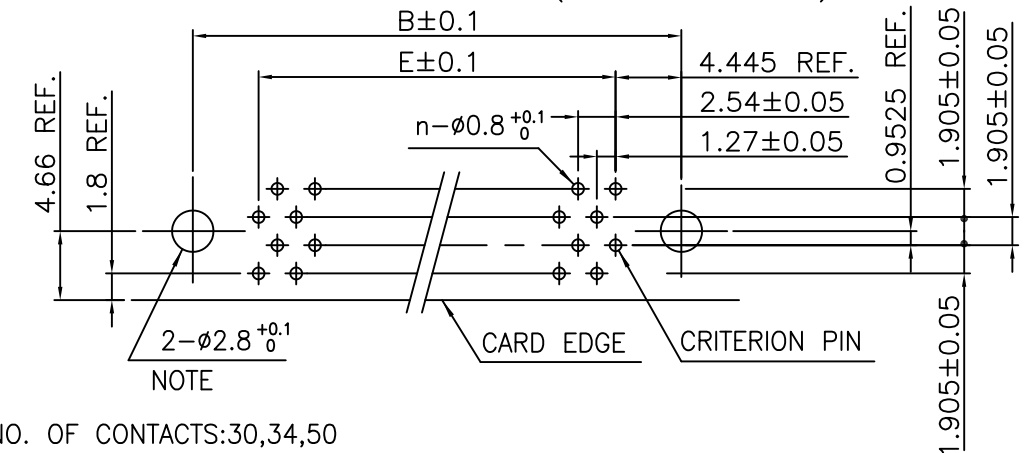


RECOMMENDED PC BOARD

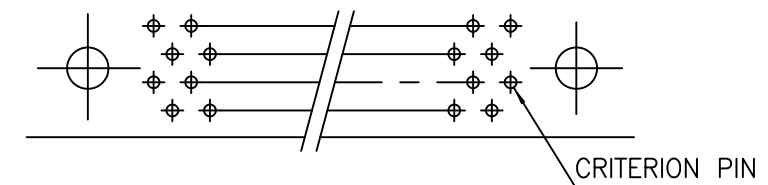
THICKNESS:1.6 ±0.2

HOLE PATTERN (COMPONENT SIDE)

NO. OF CONTACTS:40,60,68,80,100,120 (n:NO. OF CONTACTS)



NO. OF CONTACTS:30,34,50



NOTE : THROUGH-HOLES FOR MOUNTING LATCHES ALSO SHOULD BE PLATED.

CAT. NO.	NO. OF CONTACTS (MATING SIDE)	DIMENSIONS				
		A	B	C	D	E
PHEC30R-R21_LF	15/ROW X 2 ROWS	32.67	26.67	27.26	21.26	17.78
PHEC34R-R21_LF	17/ROW X 2 ROWS	35.21	29.21	29.80	23.80	20.32
PHEC40R-R21_LF	20/ROW X 2 ROWS	39.02	33.02	33.61	27.61	24.13
PHEC50R-R21_LF	25/ROW X 2 ROWS	45.37	39.37	39.96	33.96	30.48
PHEC60R-R21_LF	30/ROW X 2 ROWS	51.72	45.72	46.31	40.31	36.83
PHEC68R-R21_LF	34/ROW X 2 ROWS	56.80	50.80	51.39	45.39	41.91
PHEC80R-R21_LF	40/ROW X 2 ROWS	64.42	58.42	59.01	53.01	49.53
PHEC100R-R21_LF	50/ROW X 2 ROWS	77.12	71.12	71.71	65.71	62.23
PHEC120R-R21_LF	60/ROW X 2 ROWS	89.82	83.82	84.41	78.41	74.93

mat'l. code					surface ISO 1302	tolerance ISO 406 ISO 1101	projection MM	product family PHEC	CODE JP
ltr	description	ecn no	dr	date	tolerances unless otherwise specified		scale N/A	title PRINTED CIRCUIT CONNECTOR (CAT.NO.PHEC _ _ _ R-R21_LF)	
A	RELEASED	J08-0178	S.W	2008-4-18	angles	linear		dwg no	
B	EOL of R212LF	ELX-J-17067	S.W	2014-2-27	0°±2'	0.X ±0.3 0.XX ±0.3 0.XXX ±0.3		sheet 1 of 1 size	
					dr	S.Watanabe	2014-2-27	JSC 97409	
					enr	S.Watanabe	2014-2-27	A3	
					chr	K.Ito	2014-2-27		
					appd	Y.Kameda	2014-2-27	type Customer Drawing	
sheet index	revision sheet	B	1					Rev. B	

Mouser Electronics

Authorized Distributor

Click to View Pricing, Inventory, Delivery & Lifecycle Information:

[FCI / Amphenol:](#)

[PHEC30R-R210LF](#)