

FCI CONFIDENTIAL

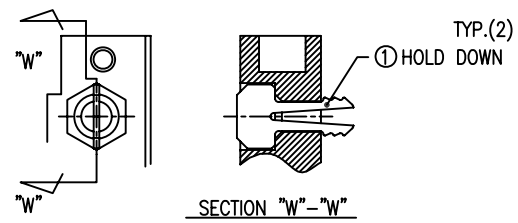
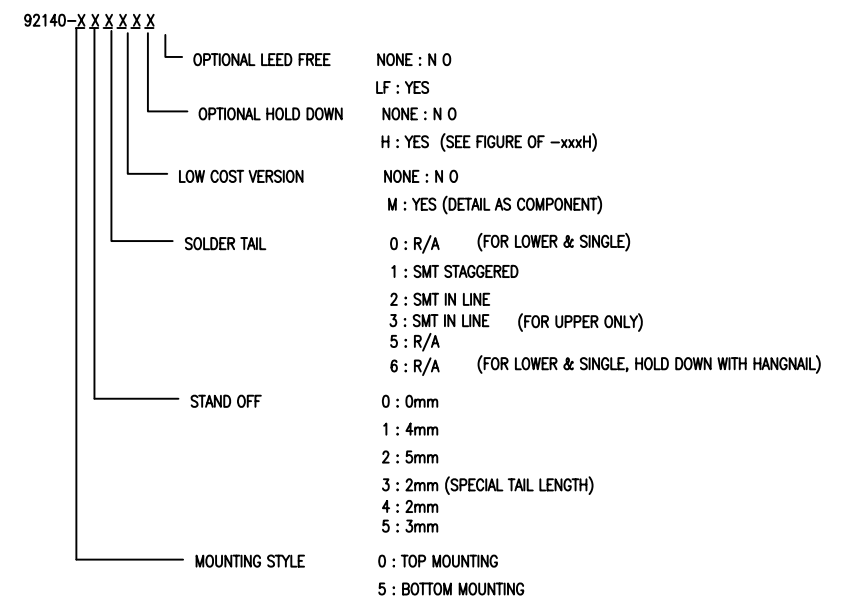


FCIconnect.com

This document is the property of and embodies CONFIDENTIAL and PROPRIETARY information of FCI. No part of the information shown on this document may be used in any way or disclosed to others without the written consent of FCI.
Copyright FCI

PRODUCT NO.
92140

PRODUCT NO.	STAND OFF	SOLDER TAIL	DIM "P" (mm)	DIM "Q" (mm)	FOR LOWER DECK OR UPPER DECK	HOLD DOWN	LOCATOR FOR SOLDER TAIL ALIGNMENT	SHEET NO.	MOUNTING STYLE TO PCB
92140-XXXX	DIM "U" (mm)								
000	0	R/A	2.8	—	LOWER	NONE	NONE	NO.2	TOP MOUNT 92140-XXXX
000M	0	R/A	2.8	—	LOWER	NONE	NONE		
000LF	0	R/A	2.8	—	LOWER	NONE	NONE		
000MLF	0	R/A	2.8	—	LOWER	NONE	NONE		
000H	0	R/A	2.8	—	LOWER	YES	NONE		
000HLF	0	R/A	2.8	—	LOWER	YES	NONE		
001	0	SMT STG.	—	—	LOWER	NONE	NONE		
001LF	0	SMT STG.	—	—	LOWER	NONE	NONE		
001H	0	SMT STG.	—	—	LOWER	YES	NONE		
001HLF	0	SMT STG.	—	—	LOWER	YES	NONE		
002	0	SMT L.L.	—	—	LOWER	NONE	NONE		
002LF	0	SMT L.L.	—	—	LOWER	NONE	NONE		
002H	0	SMT L.L.	—	—	LOWER	YES	NONE		
002HLF	0	SMT L.L.	—	—	LOWER	YES	NONE		
010	4	R/A	2.8	—	LOWER	NONE	YES		
010LF	4	R/A	2.8	—	LOWER	NONE	YES		
010H	4	R/A	2.8	—	LOWER	YES	YES		
010HLF	4	R/A	2.8	—	LOWER	YES	YES		
020	5	R/A	2.8	—	LOWER	NONE	YES		
020LF	5	R/A	2.8	—	LOWER	NONE	YES		
020MLF	5	R/A	2.8	—	LOWER	NONE	YES	NO.3	
021MLF	5	R/A	2.8	—	LOWER	NONE	YES		
020H	5	R/A	2.8	—	LOWER	YES	YES		
020HLF	5	R/A	2.8	—	LOWER	YES	YES		
026HLF	5	R/A	2.8	—	LOWER	YES	YES		
040	2	R/A	2.5	—	LOWER	NONE	NONE		
040LF	2	R/A	2.5	—	LOWER	NONE	NONE		
040HLF	2	R/A	2.5	—	LOWER	YES	NONE		
050	3	R/A	2.8	—	LOWER	NONE	YES		
050LF	3	R/A	2.8	—	LOWER	NONE	YES		
050H	3	R/A	2.8	—	LOWER	YES	YES		
050HLF	3	R/A	2.8	—	LOWER	YES	YES		
005	FOR 0	R/A	2.8	8.6	UPPER	NONE	YES	NO.4	
005LF	FOR 0	R/A	2.8	8.6	UPPER	NONE	YES		
045	FOR 2	R/A	2.5	10.3	UPPER	NONE	YES		
045LF	FOR 2	R/A	2.5	10.3	UPPER	NONE	YES		
500	0	R/A	2.8	—	LOWER	NONE	NONE	NO.5	BOTTOM MOUNT 92140-XXXX
500LF	0	R/A	2.8	—	LOWER	NONE	NONE		
500H	0	R/A	2.8	—	LOWER	YES	NONE		
500HLF	0	R/A	2.8	—	LOWER	YES	NONE		
501	0	SMT STG.	—	—	LOWER	NONE	NONE		
501LF	0	SMT STG.	—	—	LOWER	NONE	NONE		
501H	0	SMT STG.	—	—	LOWER	YES	NONE		
501HLF	0	SMT STG.	—	—	LOWER	YES	NONE		
502	0	SMT L.L.	—	—	LOWER	NONE	NONE		
502LF	0	SMT L.L.	—	—	LOWER	NONE	NONE		
502H	0	SMT L.L.	—	—	LOWER	YES	NONE		
502HLF	0	SMT L.L.	—	—	LOWER	YES	NONE		
503	0	SMT L.L.	—	—	LOWER	NONE	NONE		
503LF	0	SMT L.L.	—	—	LOWER	NONE	NONE		
510	4	R/A	2.8	—	LOWER	NONE	YES		
510LF	4	R/A	2.8	—	LOWER	NONE	YES		
510HLF	4	R/A	2.8	—	LOWER	YES	YES		
520	5	R/A	2.8	—	LOWER	NONE	YES	NO.6	
520LF	5	R/A	2.8	—	LOWER	NONE	YES		
520H	5	R/A	2.8	—	LOWER	YES	YES		
520HLF	5	R/A	2.8	—	LOWER	YES	YES		
530	2	R/A	1.48	—	LOWER	NONE	NONE		
530LF	2	R/A	1.48	—	LOWER	NONE	NONE		
540	2	R/A	2.5	—	LOWER	NONE	NONE		
540LF	2	R/A	2.5	—	LOWER	NONE	NONE		
505	FOR 0	R/A	2.8	8.6	UPPER	NONE	YES	NO.7	
505LF	FOR 0	R/A	2.8	8.6	UPPER	NONE	YES		
535	FOR 2	R/A	1.48	9.28	UPPER	NONE	YES		
535LF	FOR 2	R/A	1.48	9.28	UPPER	NONE	YES		
545	FOR 2	R/A	2.5	10.3	UPPER	NONE	YES	NO.7	
545LF	FOR 2	R/A	2.5	10.3	UPPER	NONE	YES		

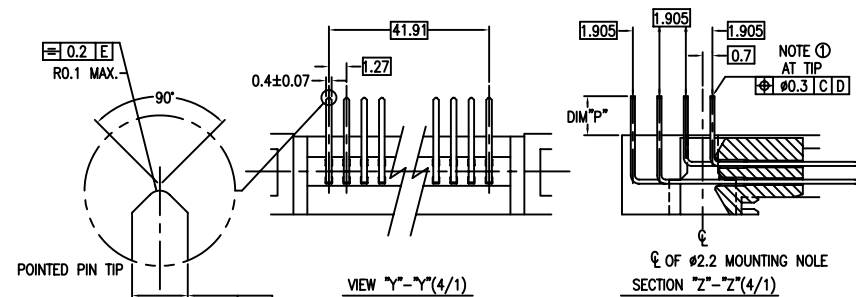
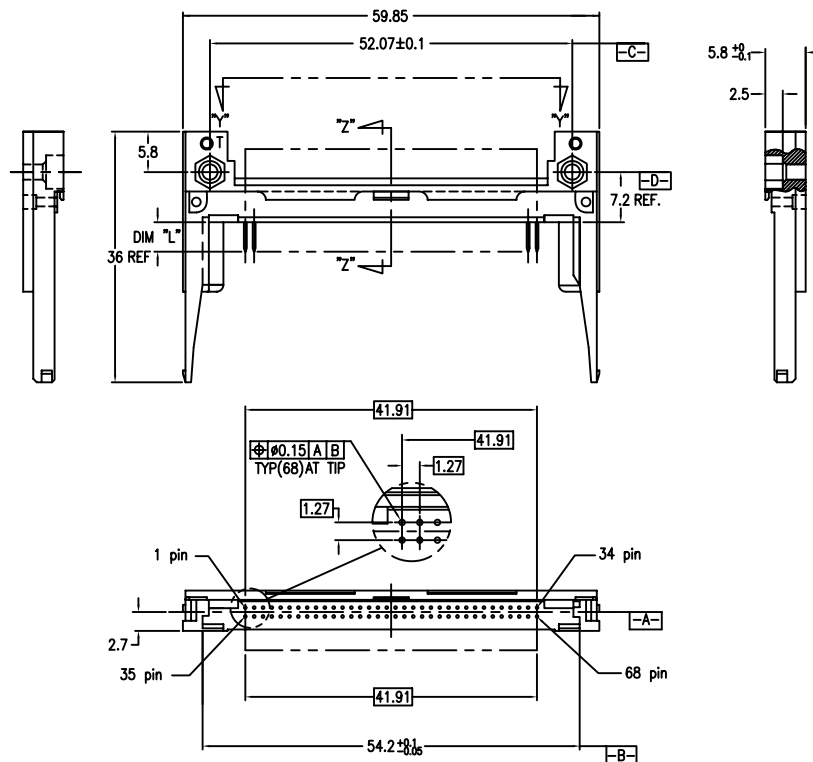


92140-xxxH
(OPTIONAL HOLD DOWN)

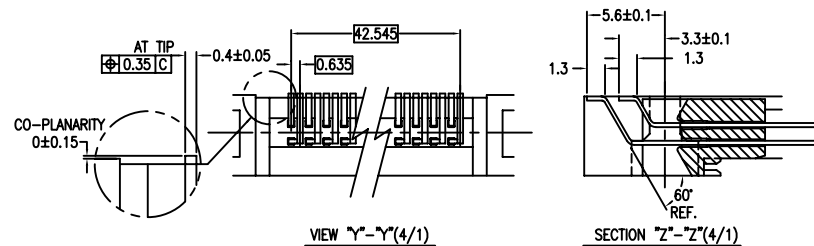
NOTE
1.THIS PRODUCT MEETS EUROPEAN UNION DIRECTIVES AND OTHER COUNTRY REGULATIONS AS DESCRIBED IN GS-22-008.
2.PRODUCT SPEC: 110-263

mat'l. code				surface		tolerance		projection		product family				PCMCIA	
				ISO 1302		ISO 406 ISO 1101									
ltr	ecn no	dr	date	tolerances unless otherwise specified							title				
AL	ELX-N-011428	ZK	04/23/12	angles	linear	0.X±0.3				68 POS EJECTOR HEADER ASSY					
AM	ELX-N-16398	JH	11/29/13			0.XX±0.13				FOR 5.0V APPLICATION					
				±2°		0.XXX±0.051		scale							
				dr	Mike Zhou		11/21/06			dwg no		sheet 1 of 7		size	
AH	N08-0219	MZ	11/14/08	enr	Mike Zhou		11/21/06			92140				A4	
AJ	N09-0045	SH	05/26/09	chr	David Qin		11/21/06								
AK	ELX-N-007949	ZK	11/01/11	appd	Jack Wang		11/21/06								
sheet		revision		AM											
index		sheet		1-7											

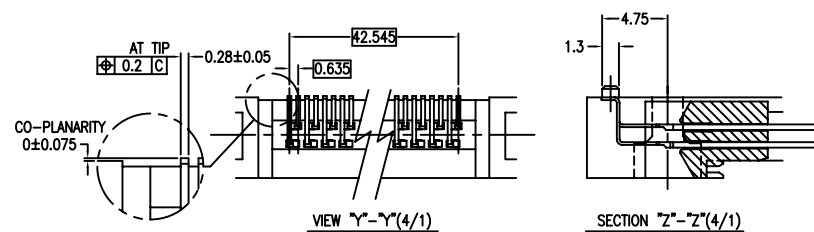
PRODUCT NO.
92140-000M
92140-000MLF
92140-000H
92140-000HLF
92140-001
92140-001LF
92140-001H
92140-001HLF
92140-002
92140-002LF
92140-002H
92140-002HLF



R/A (92140-000X)



SMT STAGGERED (92140-001X)



SMT IN LINE (92140-002X)

NOTES

- ① TRUE POSITION IS A FREE GRID TO PIN PATTERN ITSELF.
- ② SEE TA-946 FOR PCB LAYOUT.
- ③ MATERIAL HOUSING : HIGH TEMPERATURE THERMOPLASTIC UL94V-0 BLACK
PIN : COPPER ALLOY.
HOLD-DOWN : BRASS
- ④ FINISH PIN
UNDER PLATING : 0.5µm MIN. Ni.
CONTACT AREA : 0.076 µm MIN. GOLD

NOTE:SPECIAL VERSION:ONLY 0.25µm Au

SOLDER AREA : 2.5µm MIN. Sn-Pb.
OR 2.5µm MIN. PURE Sn.(FOR -XXXLF)

HOLD-DOWN : 2.5µm MIN. PURE Sn.

5. RECOMMENDED PCB HOLE (OPTIONAL HOLD-DOWN) : 2.3±0.1
6. SEQUENCE PIN ASSIGNMENT

		DIM "L"	
PIN No.	OTHERS	4.25±0.1	5.0±0.1
		36.67	35.51±0.08

7. GENERAL TOLERANCE : ±0.3
8. SEE SHEET 1 REGARDING COMPONENTS.

mat'l. code				surface	tolerance	projection	product family	
				ISO 1302	ISO 406 ISO 1101		PCMCIA	
ltr	ecn no	dr	date	tolerances unless otherwise specified			title	
AM				angles	0.X±0.3	MM	68 POS EJECTOR HEADER ASSY FOR 5.0V APPLICATION	
				linear	0.XX±0.13			
				±2'	0.XXX±0.051	scale	dwg no	
				dr	Mike Zhou	11/21/06	sheet 2 of 7	
				enr	Mike Zhou	11/21/06	92140	
				chr	David Qin	11/21/06	A4	
				appd	Jack Wang	11/21/06	type CUSTOMER Drawing	
sheet index	revision							
	sheet							

FCI CONFIDENTIAL

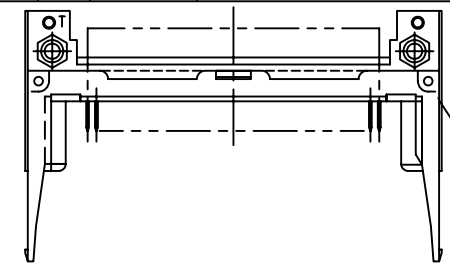
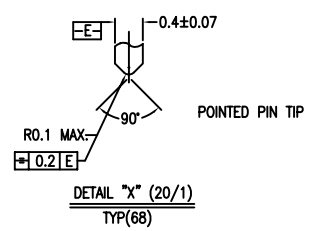
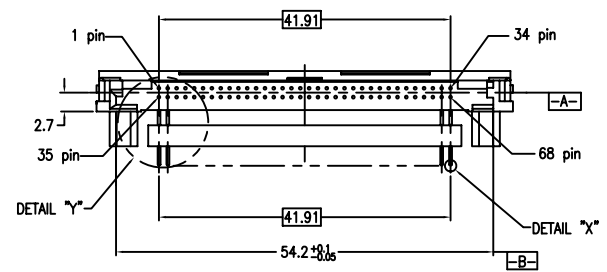
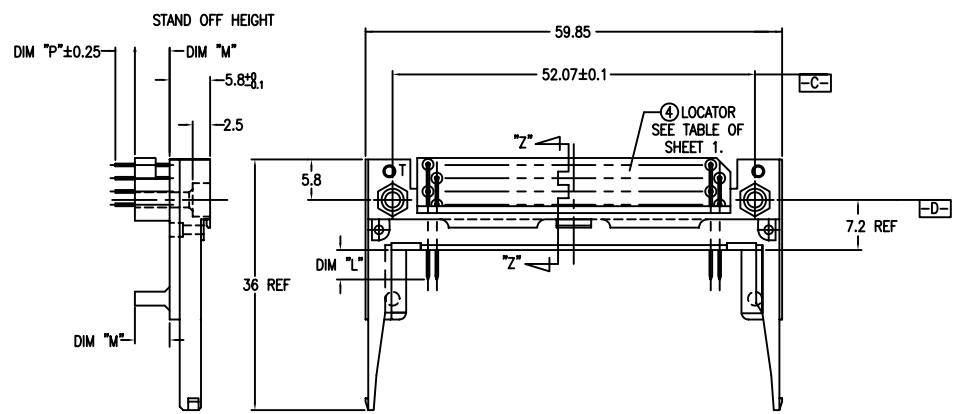
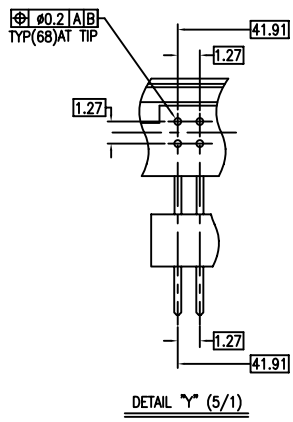


FCIconnect.com

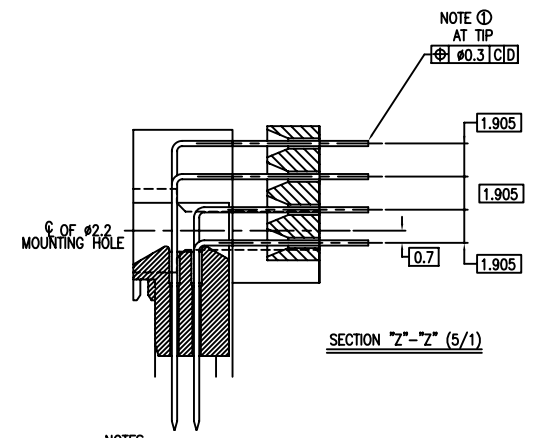
This document is the property of and embodies CONFIDENTIAL and PROPRIETARY information of FCI. No part of the information shown on this document may be used in any way or disclosed to others without the written consent of FCI.

Copyright FCI

PRODUCT NO.	PRODUCT NO.
92140-010	92140-010LF
92140-010H	92140-010HLF
92140-020	92140-020LF
92140-020H	92140-020HLF
92140-040	92140-040LF
92140-050	92140-050LF
92140-050H	92140-050HLF
92140-020MLF	92140-040HLF
92140-021MLF	
92140-026HLF	



ONLY FOR 92140-020MCLF/ 021MCLF (WITHOUT RIB)



- NOTES
- TRUE POSITION IS A FREE GRID TO PIN PATTERN ITSELF.
 - SEE TA-946 FOR PCB LAYOUT.
 - MATERIAL
 - HOUSING : HIGH TEMPERATURE THERMOPLASTIC UL94V-0 BLACK
 - PIN : COPPER ALLOY
 - HOLD-DOWN : BRASS
 - FINISH
 - PIN UNDER PLATING : 0.5µm MIN. Ni.
 - CONTACT AREA 1 : 0.076 µm MIN. GOLD
 - CONTACT AREA 2 : 0.076 µm MIN. GOLD (FOR -XXXMLF).
 - SOLDER AREA : 2.5µm MIN. Sn-Pb.
 - OR 2.5µm MIN. PURE Sn.(FOR -XXXLF&XXXMLF)
 - HOLD-DOWN : 2.5µm MIN. PURE Sn.
 - RECOMMENDED PCB HOLE (OPTIONAL HOLD-DOWN) : 2.3±0.1
 - SEQUENCE PIN ASSIGNMENT
- | | DIM "I" |
|---------|----------|
| PIN No. | 4.25±0.1 |
| OTHERS | 3.5±0.1 |
| | 5.0±0.1 |
| | 1.75±0.1 |
| | 3.5±0.1 |
7. GENERAL TOLERANCE : ±0.3
8. SEE SHEET 1 REGARDING COMPONENTS.
9. THIS PRODUCT MEETS EUROPEAN UNION DIRECTIVES AND OTHER COUNTRY REGULATIONS AS DESCRIBED IN GS-22-008

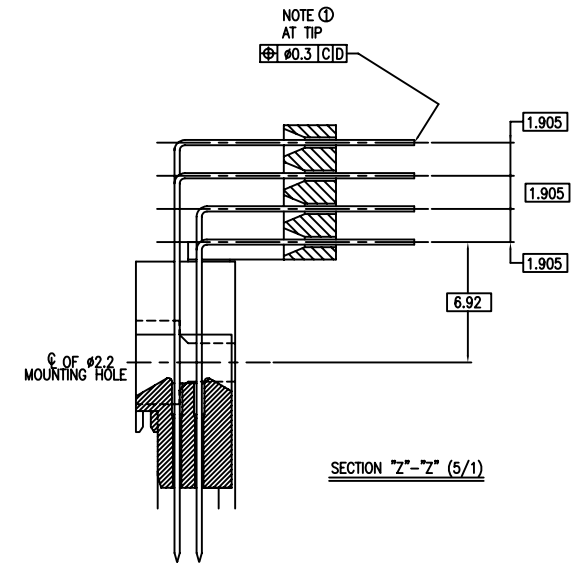
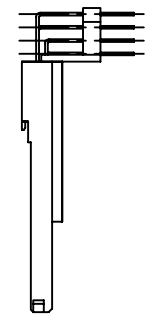
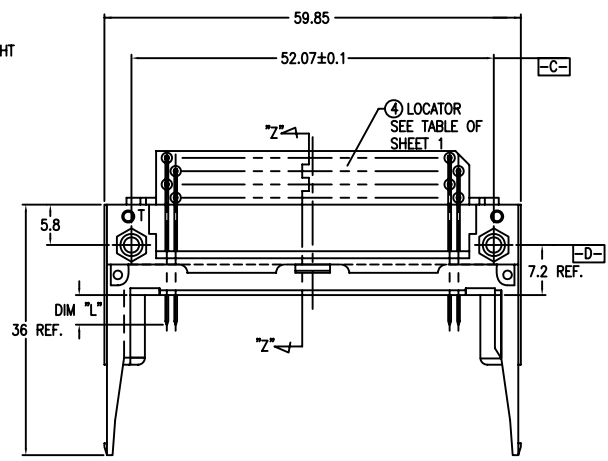
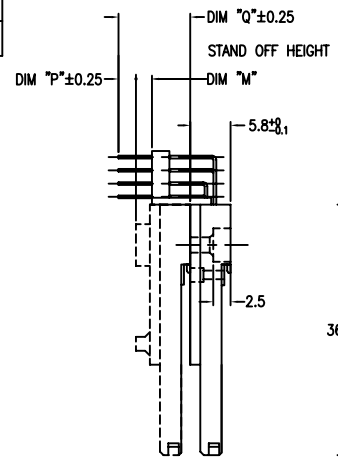
mat'l. code				surface	tolerance	projection	product family	
				ISO 1302	ISO 406 ISO 1101		PCMCIA	
ltr	ecn no	dr	date	tolerances unless otherwise specified			title	
AM				angles	linear	MM	68 POS EJECTOR HEADER ASSY FOR 5.0V APPLICATION	
				±2'	0.X±0.3			
					0.XX±0.13			
					0.XXX±0.051	scale		
				dr	Mike Zhou	11/21/06	dwg no	
				enr	Mike Zhou	11/21/06	92140	
				chr	David Qin	11/21/06	sheet 3 of 7	
				appd	Jack Wang	11/21/06	size	
sheet	revision						A4	
index	sheet						type	
							CUSTOMER Drawing	

FCI CONFIDENTIAL

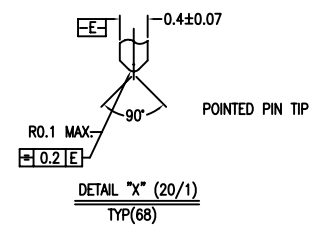
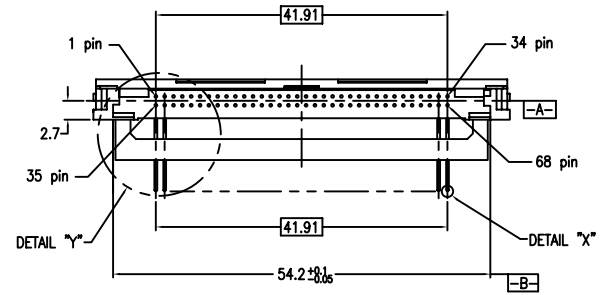
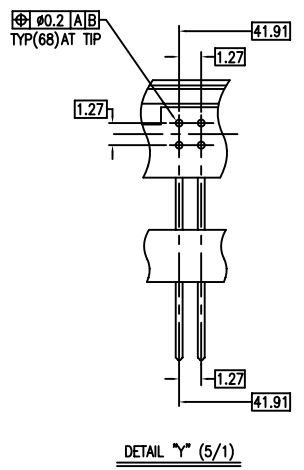


This document is the property of and embodies CONFIDENTIAL and PROPRIETARY information of FCI. No part of the information shown on this document may be used in any way or disclosed to others without the written consent of FCI.
Copyright FCI

PRODUCT NO.
92140-005
92140-005LF
92140-045
92140-045LF



SECTION "Z"- "Z" (5/1)



NOTES

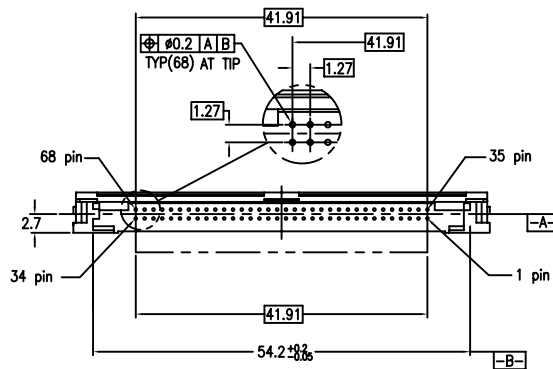
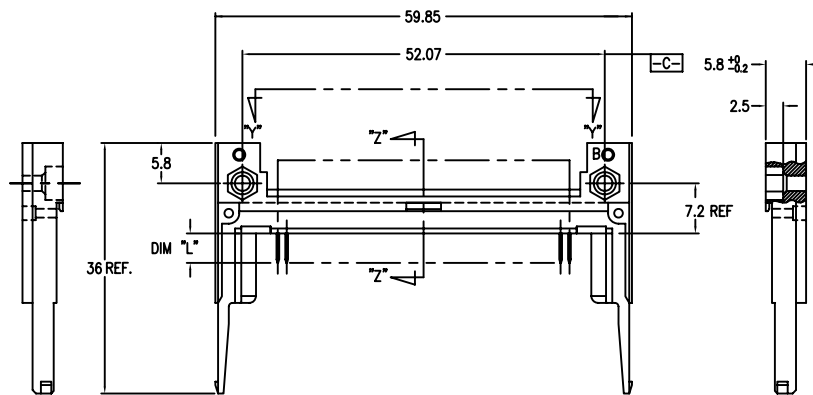
- TRUE POSITION IS A FREE GRID TO PIN PATTERN ITSELF.
- SEE TA-946 FOR PCB LAYOUT.
- MATERIAL
HOUSING : HIGH TEMPERATURE THERMOPLASTIC UL94V-0 BLACK
PIN : COPPER ALLOY
HOLD-DOWN : BRASS
- FINISH
PIN
UNDER PLATING : 0.5µm MIN. Ni.
CONTACT AREA : 0.076 µm MIN. GOLD
SOLDER AREA : 2.5µm MIN. Sn-Pb.
OR 2.5µm MIN. PURE Sn.(FOR -XXXLF)
HOLD-DOWN : 2.5µm MIN. PURE Sn.
- RECOMMENDED PCB HOLE (OPTIONAL HOLD-DOWN) : 2.3±0.1
- SEQUENCE PIN ASSIGNMENT

		DIM "P"	
		4.25±0.1	3.5±0.1
PIN No.	OTHERS	36.67	35.31±0.08

- GENERAL TOLERANCE : ±0.3
- SEE SHEET 1 REGARDING COMPONENTS.
- THIS PRODUCT MEETS EUROPEAN UNION DIRECTIVES AND OTHER COUNTRY REGULATIONS AS DESCRIBED IN GS-22-008

mat'l. code				surface	tolerance	projection	product family	
				ISO 1302	ISO 406 ISO 1101	MM	PCMCIA	
ltr	ecn no	dr	date	tolerances unless otherwise specified		MM	title	
AM				angles	Linear	scale	68 POS EJECTOR HEADER ASSY FOR 5.0V APPLICATION	
				±2°	0.X±0.3 0.XX±0.13 0.XXX±0.051		dwg no	
				dr	Mike Zhou	11/21/06	sheet 4 of 7	
				enr	Mike Zhou	11/21/06	92140	
				chr	David Qin	11/21/06	A4	
				appd	Jack Wang	11/21/06	type CUSTOMER Drawing	
sheet index	revision							
	sheet							

PRODUCT NO.
92140-500
92140-500LF
92140-500H
92140-500HLF
92140-501
92140-501LF
92140-501H
92140-501HLF
92140-502
92140-502LF
92140-502H
92140-502HLF
92140-503
92140-503LF



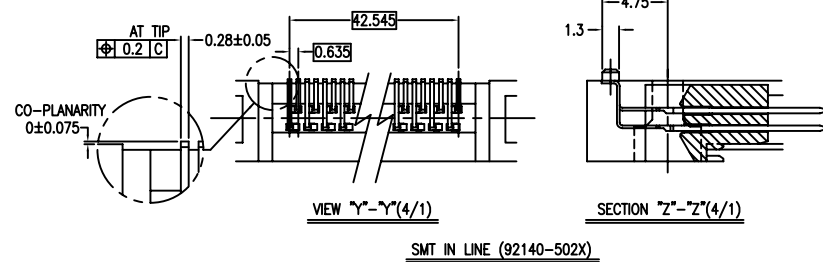
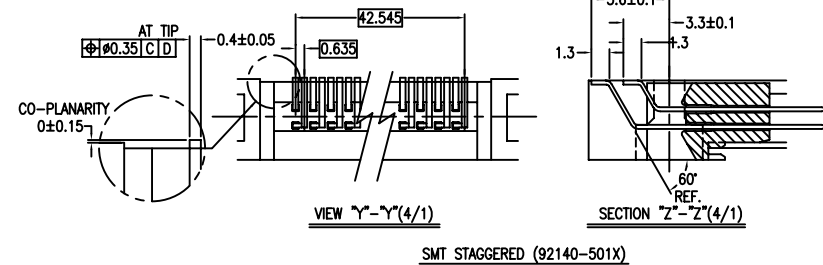
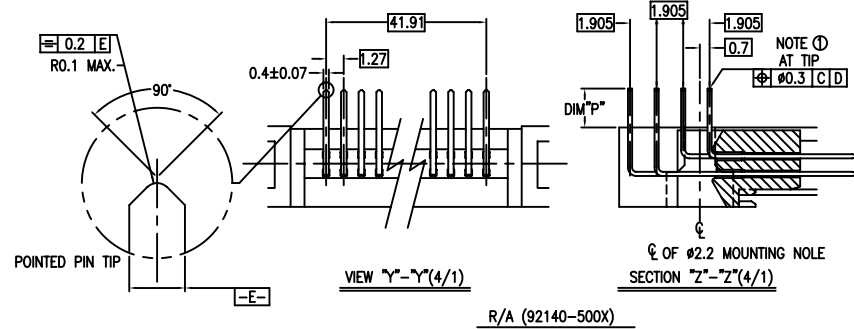
NOTES

- TRUE POSITION IS A FREE GRID TO PIN PATTERN ITSELF.
- SEE TA-946 FOR PCB LAYOUT.
- MATERIAL
HOUSING : HIGH TEMPERATURE THERMOPLASTIC UL94V-0 BLACK
PIN : PHOSPHOR BRONZE.
HOLD-DOWN : BRASS
- FINISH
PIN
UNDER PLATING : 0.5µm MIN. Ni.
CONTACT AREA : 0.076 µm MIN. GOLD

SOLDER AREA : 2.5µm MIN. Sn-Pb.
OR 2.5µm MIN. PURE Sn.(FOR -XXXLF)
HOLD-DOWN : 2.5µm MIN. PURE Sn.
- RECOMMENDED PCB HOLE (OPTIONAL HOLD-DOWN) : 2.3±0.1
- SEQUENCE PIN ASSIGNMENT

	DIM "L"		
	4.25±0.1	3.5±0.1	5.0±0.1
PIN No.	OTHERS	36,67	1,17,34
		36.67	35.51,68

- GENERAL TOLERANCE : ±0.3
- SEE SHEET 1 REGARDING COMPONENTS.
- THIS PRODUCT MEETS EUROPEAN UNION DIRECTIVES AND OTHER COUNTRY REGULATIONS AS DESCRIBED IN GS-22-008



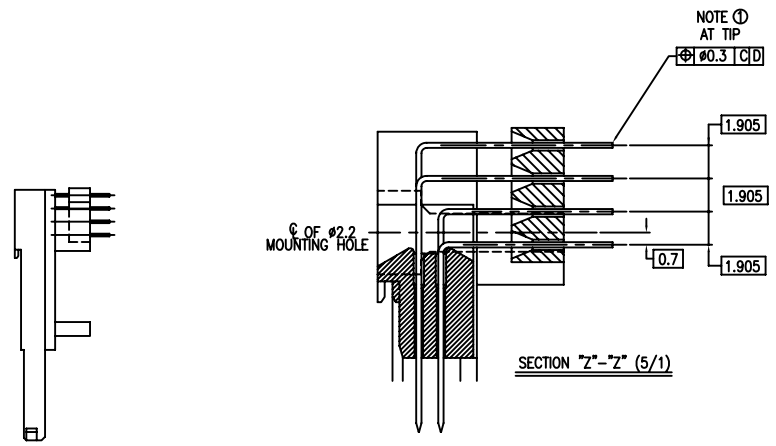
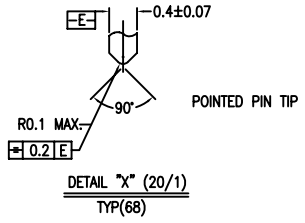
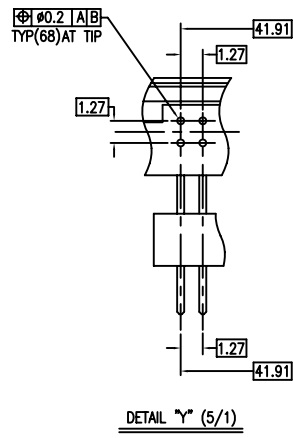
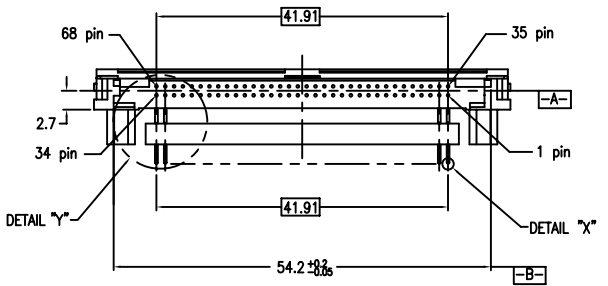
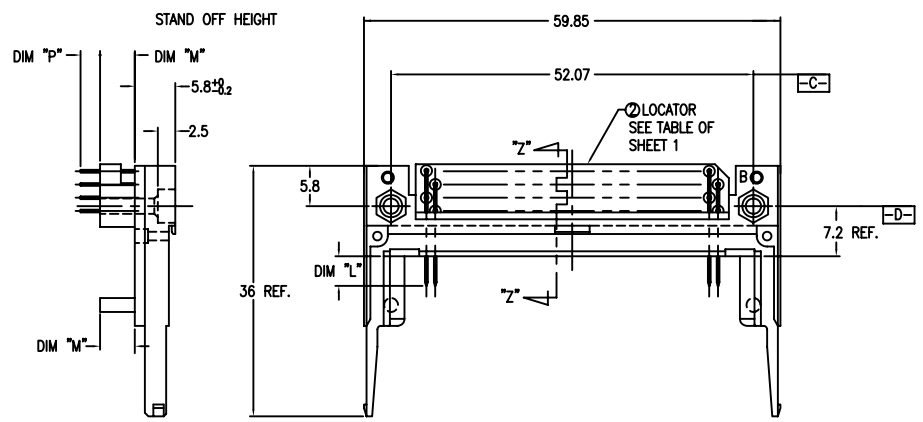
mat'l. code				surface	tolerance	projection	product family		
				ISO 1902	ISO 406 ISO 1101		PCMCIA		
ltr	ecn no	dr	date	angles	linear		title		
AM				±2°		MM	68 POS EJECTOR HEADER ASSY FOR 5.0V APPLICATION		
						scale	dwg no		
				dr	Mike Zhou	11/21/06	sheet 5 of 7		
				enrg	Mike Zhou	11/21/06	92140		
				chr	David Qin	11/21/06	A4		
				appd	Jack Wang	11/21/06	type CUSTOMER Drawing		
sheet index	revision	sheet							

FCI CONFIDENTIAL



This document is the property of and embodies CONFIDENTIAL and PROPRIETARY information of FCI. No part of the information shown on this document may be used in any way or disclosed to others without the written consent of FCI.
Copyright FCI

PRODUCT NO.		
92140-510	92140-510LF	92140-510HLF
92140-520	92140-520LF	
92140-520H	92140-520HLF	
92140-530	92140-530LF	
92140-540	92140-540LF	



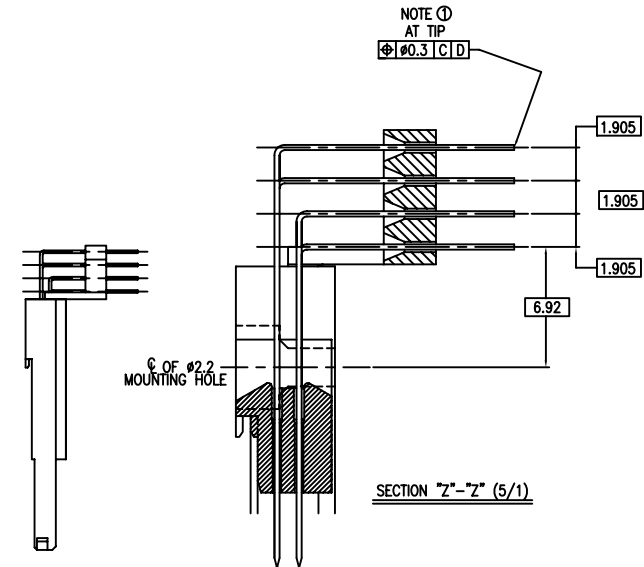
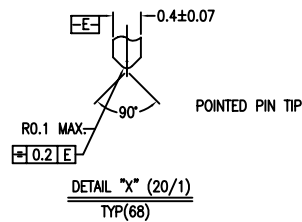
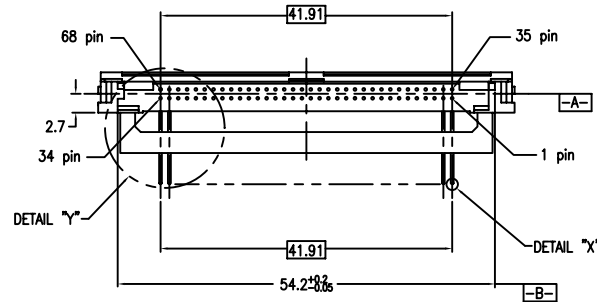
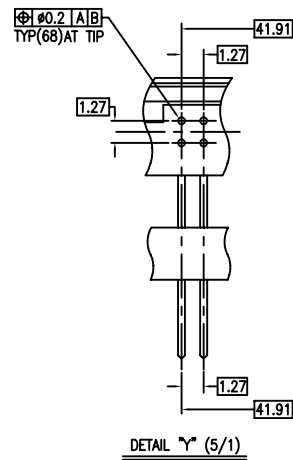
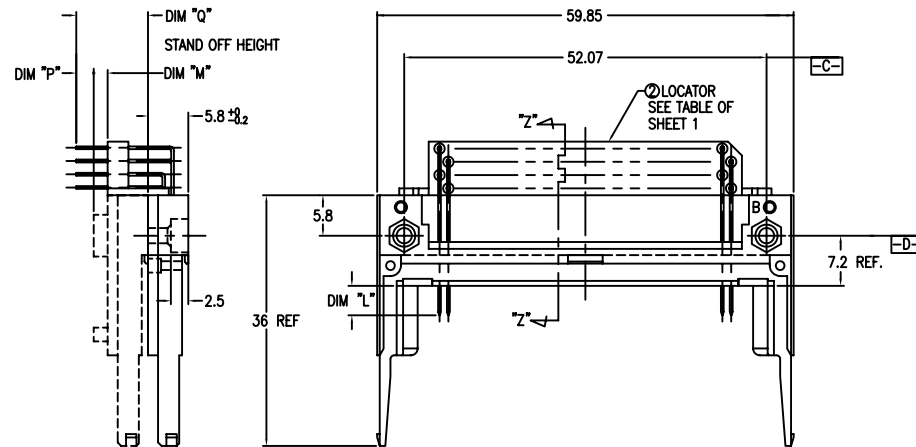
- NOTES
- TRUE POSITION IS A FREE GRID TO PIN PATTERN ITSELF.
 - SEE TA-946 FOR PCB LAYOUT.
 - MATERIAL
HOUSING : HIGH TEMPERATURE THERMOPLASTIC UL94V-0 BLACK
PIN : COPPER ALLOY.
HOLD-DOWN : BRASS
 - FINISH
PIN
UNDER PLATING : 0.5µm MIN. Ni.
CONTACT AREA : 0.076 µm MIN. GOLD
SOLDER AREA : 2.5µm MIN. Sn-Pb.
OR 2.5µm MIN. PURE Sn.(FOR -XXXLF)
HOLD-DOWN : 2.5µm MIN. PURE Sn.
 - RECOMMENDED PCB HOLE (OPTIONAL HOLD-DOWN) : 2.3±0.1
 - SEQUENCE PIN ASSIGNMENT

PIN No.	DIM "L"		
	4.25±0.1	3.5±0.1	5.0±0.1
OTHERS	36.67	36.67	36.67

- GENERAL TOLERANCE : ±0.3
- SEE SHEET 1 REGARDING COMPONENTS.
- THIS PRODUCT MEETS EUROPEAN UNION DIRECTIVES AND OTHER COUNTRY REGULATIONS AS DESCRIBED IN GS-22-008

mat'l. code				surface	tolerance	projection	product family	
				ISO 1302	ISO 406	ISO 101	PCMCIA	
ltr				ecn no		date	title	
AM							68 POS EJECTOR HEADER ASSY	
				angles		linear	FOR 5.0V APPLICATION	
				±2°		scale		
				dr	Mike Zhou	11/21/06	dwg no	
				engr	Mike Zhou	11/21/06	92140	
				chr	David Qin	11/21/06	sheet 6 of 7	
				appd	Jack Wang	11/21/06	size	
sheet				revision			type	
index				sheet			CUSTOMER Drawing	

PRODUCT NO.
92140-505
92140-505LF
92140-535
92140-535LF
92140-545
92140-545LF

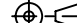


NOTES

- TRUE POSITION IS A FREE GRID TO PIN PATTERN ITSELF.
- SEE TA-946 FOR PCB LAYOUT.
- MATERIAL
HOUSING : HIGH TEMPERATURE THERMOPLASTIC UL94V-0 BLACK
PIN : COPPER ALLOY.
HOLD-DOWN : BRASS
- FINISH
PIN
UNDER PLATING : 0.5μm MIN. Ni.
CONTACT AREA : 0.076 μm MIN. GOLD
SOLDER AREA : 2.5μm MIN. Sn-Pb.
OR 2.5μm MIN. PURE Sn.(FOR -XXXLF)
HOLD-DOWN : 2.5μm MIN. PURE Sn.
- RECOMMENDED PCB HOLE (OPTIONAL HOLD-DOWN) : 2.3±0.1
- SEQUENCE PIN ASSIGNMENT

	DIM "L"		
	4.25±0.1	3.5±0.1	5.0±0.1
PIN No.	OTHERS	36,67	1,7,34,35,57,68

- GENERAL TOLERANCE : ±0.3
- SEE SHEET 1 REGARDING COMPONENTS.
- THIS PRODUCT MEETS EUROPEAN UNION DIRECTIVES AND OTHER COUNTRY REGULATIONS AS DESCRIBED IN GS-22-008
- PRODUCT SPEC: 110-263

mat'l. code				surface ISO 1302		tolerance ISO 406 ISO 1101		projection 		product family PCMCIA															
ltr		ecn no		dr		date		tolerances unless otherwise specified				title													
AM								angles		linear		0.X±0.3		68 POS EJECTOR HEADER ASSY FOR 5.0V APPLICATION											
										0.XX±0.13															
								±2'		0.XXX±0.051															
												scale		dwg no 92140 sheet 7 of 7 size A4											
								dr		Mike Zhou		11/21/06													
								enr		Mike Zhou		11/21/06													
										chr		David Qin		11/21/06		type CUSTOMER Drawing									
										appd		Jack Wang		11/21/06											
sheet index		revision sheet																							

Mouser Electronics

Authorized Distributor

Click to View Pricing, Inventory, Delivery & Lifecycle Information:

[FCI / Amphenol:](#)

[92140-026HLF](#)