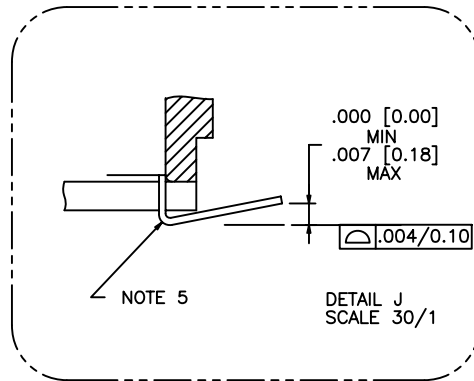
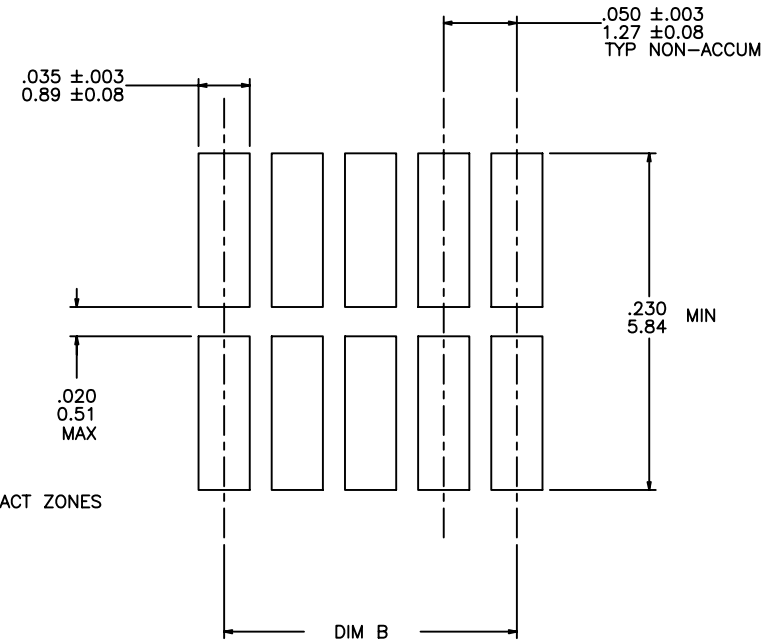
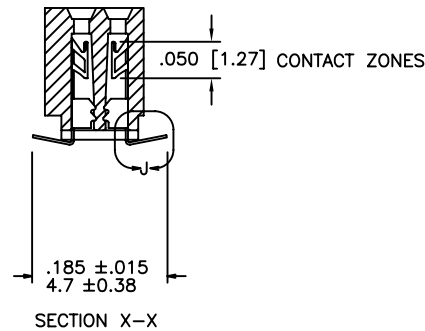
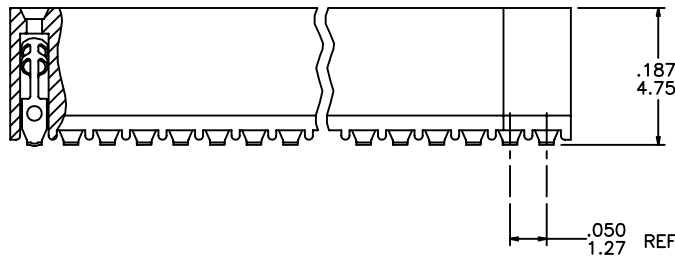
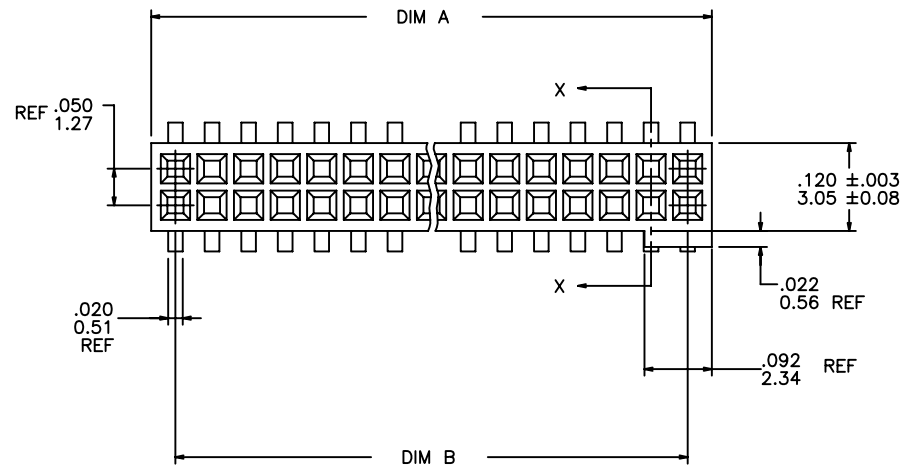




FCIconnect.com

Copyright FCI

PRODUCT NUMBER
SEE TABLE

mat'l. code				surface		tolerance	projection	product family		
-				ISO 1302		ISO 406 ISO 1101		RIBCAGE		
ltr	ecn	no	dr	date		tolerances unless otherwise specified		title		
AC	ELX-N-16109	GM		10/15/13		angles	linear	.050 CC VERT. C.C. ASS'Y.		
V	M05-0123	MHT		06/06/05				SUR. MOUNT-POL.		
W	M06-0225	ERE		06/12/06		0' $\pm 2'$		scale 4:1		
X	M06-0370	MHT		09/26/06	dr	D. SHEAFFER		dwg no		
Y	M08-0053	MHT		02/27/08	enrg	J. OSWALD		sheet 1 of 3		
AA	M09-0058	CMR		4/06/09	chr	J. OSWALD		size		
AB	ELX-N-010200	YO		02/07/12	appd	J. OSWALD		A3		
sheet	revision	AC	AC	AC				type		
index	sheet	1	2	3				Product Customer Drawing		

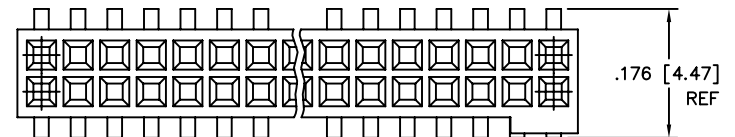
PRODUCT NO. NOTE 3, 9	SIZE	DIM A	DIM B	SPECIAL PACKAGING	TAPE WIDTH PITCH	PCS. PER REEL
87022-X05	2 X 5	.266/6.76	.200/5.08	NOTE 7	24mm 12mm	750
-X10	2 X 10	.516/13.11	.450/11.43	NOTE 7	24mm 12mm	750
-X15	2 X 15	.766/19.46	.700/17.78	NOTE 7	44mm 12mm	500
-X20	2 X 20	1.016/25.81	.950/24.13	NOTE 7	44mm 12mm	500
-X25	2 X 25	1.266/32.16	1.200/30.48	NOTE 7	44mm 12mm	500
-X30	2 X 30	1.516/38.51	1.450/36.83	NO	—	—
-X35	2 X 35	1.766/44.86	1.700/43.18	NO	—	—
-X40	2 X 40	2.016/51.21	1.950/49.53	NO	—	—
-X45	2 X 45	2.266/57.56	2.200/55.88	NO	—	—
87022-X50	2 X 50	2.516/63.91	2.450/63.23	NO	—	—
87022-X25 MIL.	2 X 25	1.266/32.16	1.200/30.48	NO	—	—

NOTE 6

NOTES :

- HOUSING MATERIAL :
LCP GLASS FILLED . FLAME RETARDANT PER UL94V-0.
COLOR : NATURAL
- TERMINAL MATERIAL : BeCu
- TERMINAL PLATING :
3.1 87022-6XX
30u"/.76u MIN GOLD OR GXT OVER Ni ON CONTACT ZONES.
100u"/2.54u MIN Sn. OVER Ni IN SOLDERING ZONES.
OTHERWISE GOLD FLASH OR UNPLATED. MATTE TIN FINISH
AT SOLDERING ZONE.
3.2 87022-1XX
30u"/.76u MIN GOLD OVER Ni ON CONTACT ZONES.
GOLD FLASH OVER Ni IN OTHER ALL ZONES.
- APPLICATION INFORMATION:
A. RECOMMENDED MOUNTING PAD PATTERN IS
SHOWN IN FIGURE "A".
B. MATING PINS TO BE .0176/0.447 TO .0181/0.459 DIA.
C. MATING PIN TIPS TO BE IN TRUE POSITION TO MATING
GRID WITHIN .008/0.20 DIA.
D. SUGGESTED MATING PIN LENGTH .130/3.30
±.010/0.25.

- LEAD TIPS TO BE ABOVE HEEL, UP TO .007/0.18 MAX.
COPLANARITY TO BE MEASURED AT LOWEST POINT (HEEL).
- SOLDERTAIL SHALL BE FINISHED IN ACCORDANCE WITH MIL-STD-1276.
HOT SOLDER DIP (FINISH 51) OR FUSED (REFLOWED) TIN LEAD PLATE
(FINISH 34). 100u"/2.54u MIN.



- ADD "TR" TO END OF DASH NUMBER FOR TAPE AND REEL PACKAGING
WITH CAP. TOOLED ONLY FOR NOTED CONNECTORS.
- ADD "CT" TO END OF DASH NUMBER FOR CONNECTOR WITH
VACUUM CAP IN TUBE.
- ADD "LF" SUFFIX AT THE END OF PART NUMBER FOR LEAD FREE OPTION.
- THIS PRODUCT MEETS EUROPEAN UNION DIRECTIVES AND OTHER
COUNTRY REGULATION AS DESCRIBED IN GS-22-008.
- THE HOUSING WILL WITHSTAND EXPOSURE TO 260°C PEAK TEMPERATURE
FOR 20 SECONDS IN A CONVECTION, INFRA-RED OR VAPOR PHASE REFLOW
OVEN. SEE APPLICATION NOTES/PROCEDURES IF THEY ARE AVAILABLE.
- PRODUCT SPEC PER BUS-12-087.

mat'l. code				surface	tolerance	projection	product family		
—				ISO 1302 ✓	ISO 406 ISO 1101	⊕	RIBCAGE		
ltr	ecr	no	dr	date	tolerances unless otherwise specified	INCH/MM scale 4:1	title		
AC					angles		.050 CC VERT. C.C. ASS'Y.		
					linear		SUR. MOUNT-POL.		
					0°±2'		dwg no		
					dr	D. SHEAFFER	12/6/88	sheet 2 of 3	size
					enr	J. OSWALD	12/6/88	87022	A3
					chr	J. OSWALD	12/6/88	type Product Customer Drawing	
					app	J. OSWALD	12/6/88		
sheet	revision								
index	sheet								



FCIconnect.com

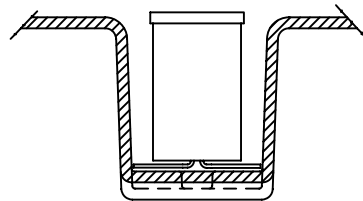
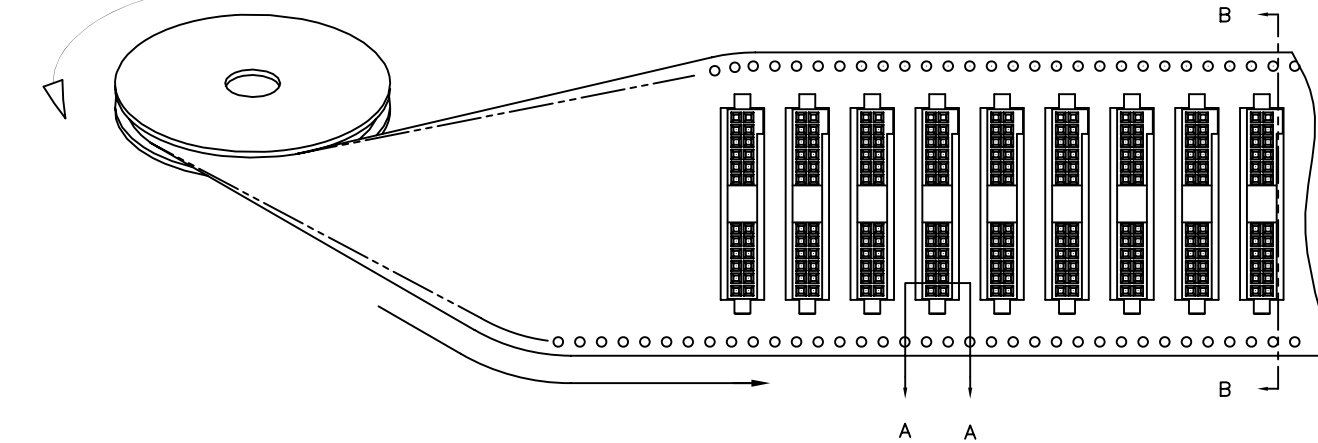
Copyright FCI

PRODUCT NUMBER

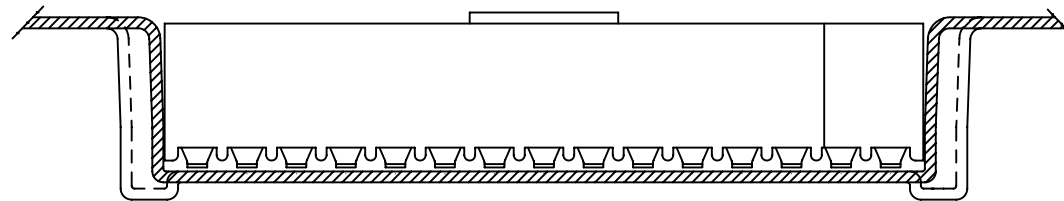
SEE TABLE

UNREELING
DIRECTION

REFERENCE ONLY

TAPE WIDTH'S 32mm AND ABOVE HAS BOTH FEED TRACKS,
BELOW 32mm HAS TOP FEED TRACK ONLY.

SECTION A-A



SECTION B-B

mat'l. code		surface		tolerance		projection		product family	
-		ISO 1302 ✓		ISO 406		INCH/MM		RIBCAGE	
ltr	ecn	no	dr	date		tolerances unless otherwise specified		title	
AC						angles		.050 CC VERT. C.C. ASS'Y.	
						linear		SUR. MOUNT-POL.	
				0°±2°		.XX±.01/0.3		scale 4:1	
						.XXX±.005/0.13		dwg no	
						.XXXX±.0020/0.051		sheet 3 of 3	
				dr		D. SHEAFFER		12/6/88	
				enr		J. OSWALD		12/6/88	
				chr		J. OSWALD		12/6/88	
				appd		J. OSWALD		12/6/88	
sheet	revision					FCI		type	
index	sheet							Product Customer Drawing	

Mouser Electronics

Authorized Distributor

Click to View Pricing, Inventory, Delivery & Lifecycle Information:

[FCI / Amphenol:](#)

[87022-645LF](#)