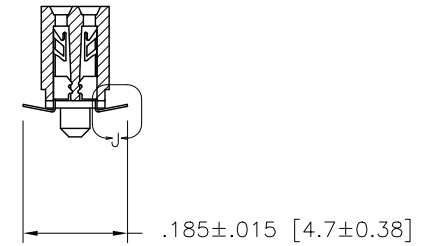
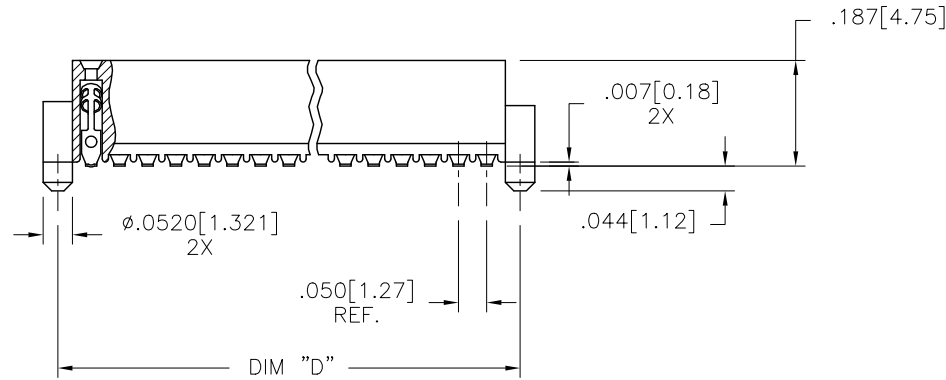
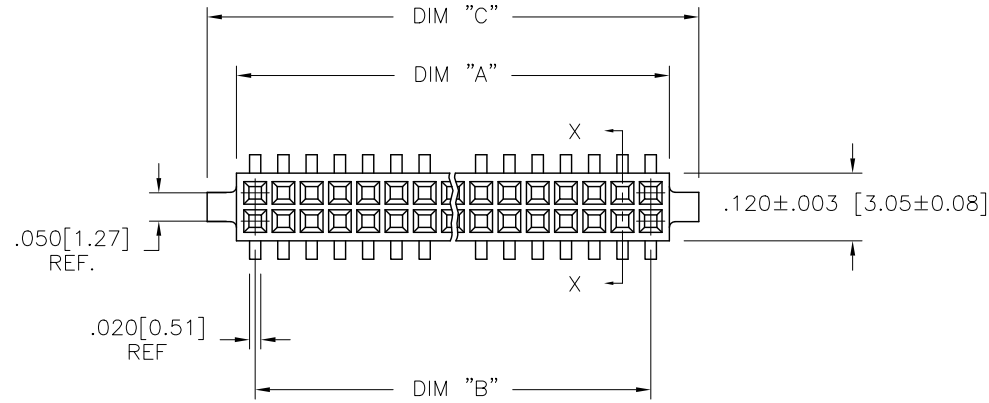


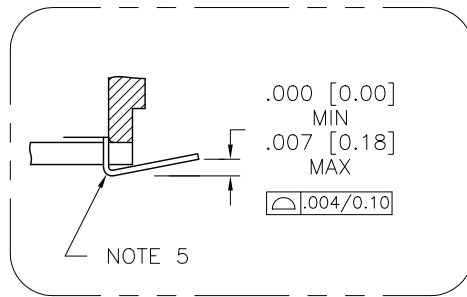





FCIconnect.com

Copyright FCI

PRODUCT NUMBER
SEE TABLE

SECTION X-X

DETAIL J
SCALE 10/1

mat'l. code				surface		tolerance		projection	product family						
-				ISO 1302 ✓		ISO 406 ISO 1101			RIB CAGE						
ltr	ecn no	dr	date	tolerances unless otherwise specified						title					
AC	M05-0084	MHT	5/05/05	angles	linear	xx ±.01/.3					INCH/MM				
AD	M06-0284	AEA	7/27/06			xxx ±.005/.13									
AE	M07-0267	MHT	6/08/07			xxxx ±.0020/.050									
				0°±2°	scale 3:1										
AF	M07-0345	AGS	7/26/07	dr	M. CLOUSER	5/25/91			dwg no	sheet 1 of 4	size				
AG	M09-0345	CMR	4/06/09	engr	B. BARUFFALO	5/25/91									
AH	N10-0174	YO	6/17/10	chr	B. BARUFFALO	5/25/91									
AJ	ELX-N-010201	YO	2/8/12	appd	B. BARUFFALO	5/25/91									
sheet	revision	AJ	AJ	AJ	AJ				87023			A3			
index	sheet	1	2	3	4										
									type				Product	Customer	Drawing

PRODUCT NO.
87023 - XXX

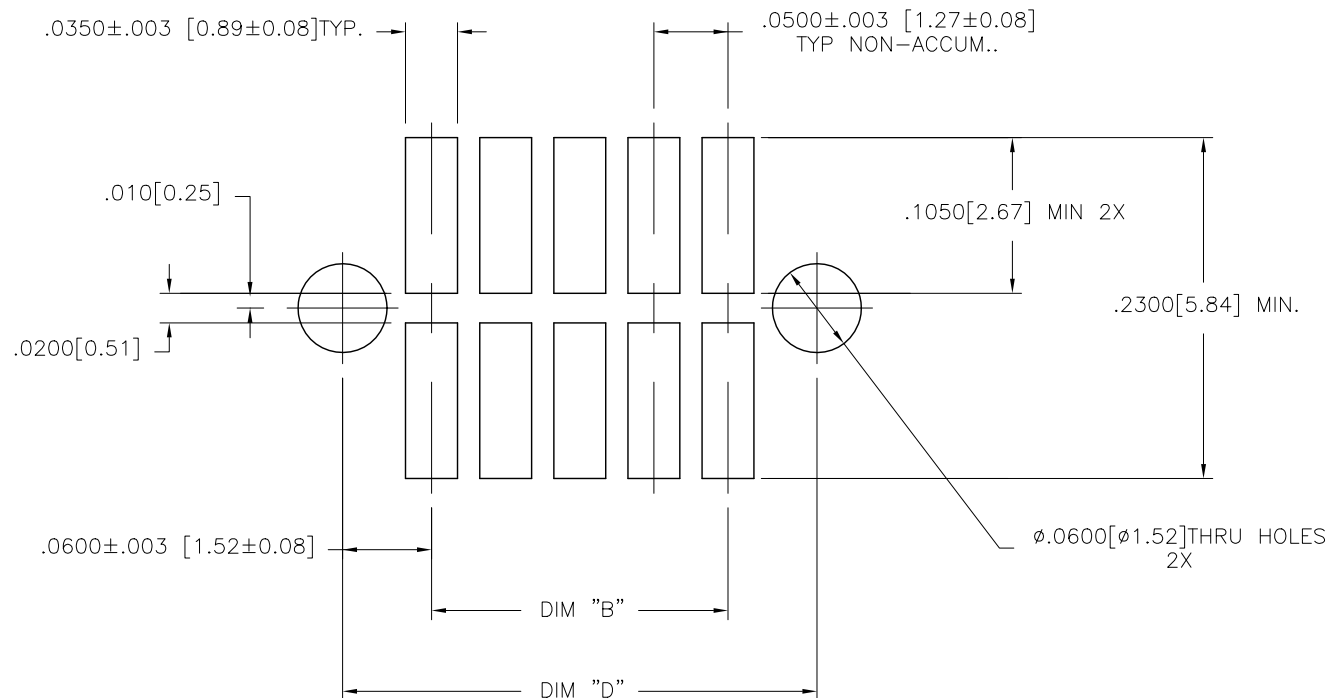
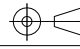

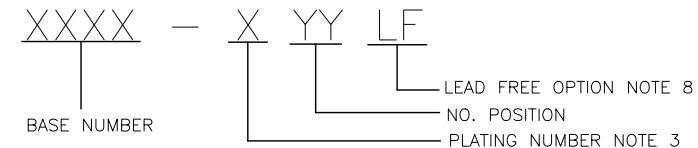


FIGURE A
RECOMMENDED
P.C.B. LAYOUT

mat'l. code —					surface ISO 1302 ✓			tolerance ISO 406 ISO 1101			projection 			product family RIB CAGE					
ltr	ecn	no	dr	date	tolerances unless otherwise specified										title				
AJ					angles		linear	XX ±.01/.3			INCH/MM ↔			.050cc VERT. CARD CONN. SURF. MT. W/LOC. FEATURES					
					0°±2°			XXX ±.005/.13											
								XXXX ±.0020/.050			scale 3:1								
					dr	M. CLOUSER		5/25/91					dwg no		sheet 2 of 4		size		
					engr	B. BARUFFALO		5/25/91					87023		A3				
					chr	B. BARUFFALO		5/25/91					type Product Customer Drawing						
					appd	B. BARUFFALO		5/25/91											
sheet index		revision sheet																	

PRODUCT NO. NOTE 8	SIZE	DIM A	DIM B	DIM C	DIM D	SPECIAL PACKAGING	TAPE WIDTH PITCH	PIECES PER REEL
87023-605	2 X 5	.266/6.756	.200/5.08	.370/9.398	.3200/8.128	NOTE 6	24mm 12mm	750
-610	2 X 10	.516/13.106	.450/11.43	.620/15.748	.5700/14.478	NOTE 6	24mm 12mm	750
-615	2 X 15	.766/19.456	.700/17.78	.870/22.098	.8200/20.828	NOTE 6	44mm 12mm	500
-620	2 X 20	1.016/25.806	.950/24.13	1.120/28.448	1.0700/27.178	NOTE 6 & 7	44mm 12mm	500
-625	2 X 25	1.266/32.156	1.200/30.48	1.370/34.798	1.3200/33.528	NOTE 6	56mm 12mm	500
-630	2 X 30	1.516/38.506	1.450/36.83	1.620/41.148	1.5700/39.878	NOTE 6 & 7	56mm 12mm	500
-635	2 X 35	1.766/44.856	1.700/43.18	1.870/47.498	1.8200/46.228	NOTE 6	72mm 12mm	500
-640	2 X 40	2.016/51.206	1.950/49.53	2.120/53.848	2.0700/52.578	NOTE 6 & 7	72mm 12mm	500
-645	2 X 45	2.266/57.556	2.200/55.88	2.370/60.198	2.3200/58.928	NOTE 6	72mm 12mm	500
-650	2 X 50	2.516/63.906	2.450/62.23	2.620/66.548	2.5700/65.278	NOTE 6	88mm 12mm	500
-905	2 X 5	.266/6.756	.200/5.08	.370/9.398	.3200/8.128	NO	—	—
-910	2 X 10	.516/13.106	.450/11.43	.620/15.748	.5700/14.478	NO	—	—
-915	2 X 15	.766/19.456	.700/17.78	.870/22.098	.8200/20.828	NO	—	—
-920	2 X 20	1.016/25.806	.950/24.13	1.120/28.448	1.0700/27.178	NO	—	—
-925	2 X 25	1.266/32.156	1.200/30.48	1.370/34.798	1.3200/33.528	NO	—	—
-930	2 X 30	1.516/38.506	1.450/36.83	1.620/41.148	1.5700/39.878	NO	—	—
-935	2 X 35	1.766/44.856	1.700/43.18	1.870/47.498	1.8200/46.228	NO	—	—
-940	2 X 40	2.016/51.206	1.950/49.53	2.120/53.848	2.0700/52.578	NO	—	—
-945	2 X 45	2.266/57.556	2.200/55.88	2.370/60.198	2.3200/58.928	NO	—	—
87023-950	2 X 50	2.516/63.906	2.450/62.23	2.620/66.548	2.5700/65.278	NO	—	—



NOTES:

- HOUSING MATERIAL:
GLASS FILLED THERMOPLASTIC FLAME RETARDANT PER UL 94V-0
COLOR: NATURAL
- TERMINAL MATERIAL: BeCu
- TERMINAL PLATING:
-6XXLF: 30u"/.76um MIN HARD GOLD OR GXT OVER Ni ON CONTACT ZONES.
100u"/2.54um MIN PURE TIN OVER Ni
IN SOLDERING ZONES, OTHERWISE GOLD FLASH OR UNPLATED.
-9XXLF: 60u"/1.52um MIN HARD GOLD ON CONTACT ZONES,
100u"/2.54um MIN PURE TIN OVER Ni
OVER Ni IN SOLDERING ZONES, OTHERWISE GOLD FLASH OR UNPLATED.
- APPLICATION INFORMATION:
A. RECOMMENDED MOUNTING PAD PATTERN IS
SHOWN IN FIGURE "A".
B. MATING PINS TO BE .0176/0.447 TO .0181/0.459 DIA.
C. MATING PIN TIPS TO BE IN TRUE POSITION TO MATING
GRID WITHIN .006/0.15 DIA.
D. SUGGESTED MATING PIN LENGTH .130/3.30
±.010/0.25.

- LEAD TIPS TO BE ABOVE HEEL, UP TO .007/0.18 MAX.
COPLANARITY TO BE MEASURED AT LOWEST POINT (HEEL).
- ADD "TR" TO END OF DASH NUMBER FOR TAPE AND REEL
PACKAGED WITH CAP. TOOLED ONLY FOR NOTED CONNECTORS.
- ADD "CT" TO END OF DASH NUMBER FOR CONNECTOR WITH
CAP FOR VACUUM PICKUP IN TUBE.
- ADD LF SUFFIX AT THE END OF PART NUMBER
FOR LEAD FREE OPTION.
- THE HOUSING WILL WITHSTAND EXPOSURE TO 260°C PEAK TEMPERATURE
FOR 20 SECONDS IN A CONVECTION, INFRA-RED OR VAPOR PHASE REFLOW
OVEN. SEE APPLICATION NOTE/PROCEDURES IF THEY ARE AVAILABLE.
- THIS PRODUCT MEETS EUROPEAN UNION DIRECTIVES AND OTHER
COUNTRY REGULATION AS DESCRIBED IN GS-22-008.
- PRODUCT SPEC PER BUS-12-087.

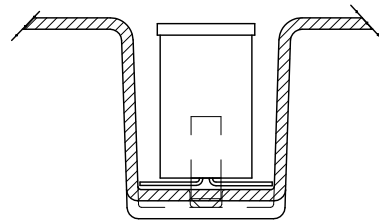
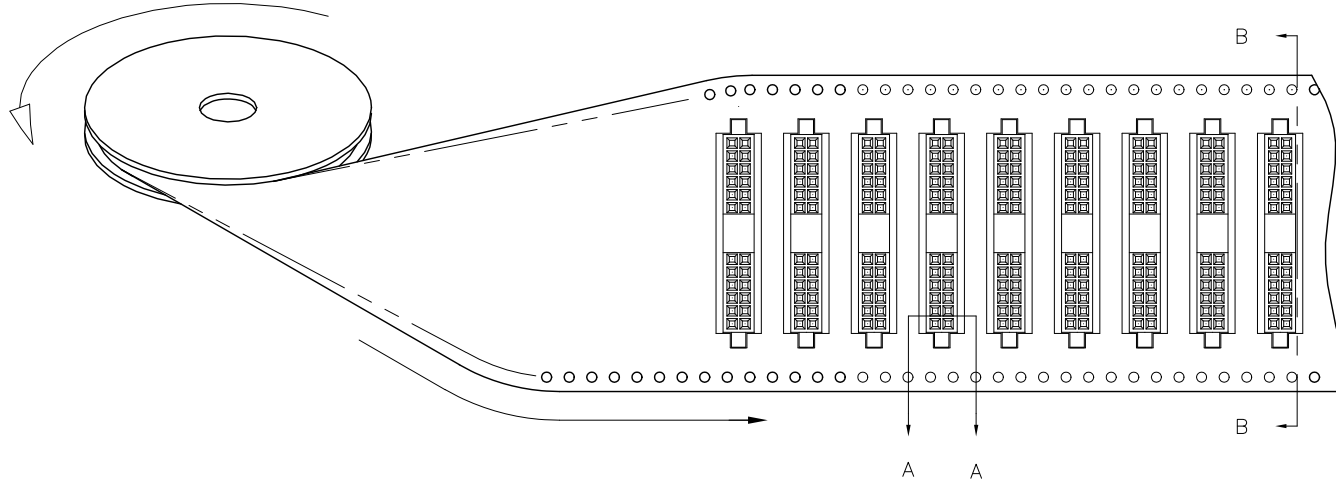
mat'l. code		surface		tolerance		projection		product family	
—		ISO 1302 ✓		ISO 406 ISO 1101		⊕		RIB CAGE	
ltr	ecn	no	dr	date	tolerances unless otherwise specified		title		
AJ					angles	linear	INCH/MM	.050cc VERT. CARD CONN.	
					σ±2'	xxx ±.005/.13	scale 3:1	SURF. MT. W/LOC. FEATURES	
					dr	M. CLOUSER 5/25/91		dwg no	
					enrg	B. BARUFFALO 5/25/91		sheet 3 of 4	
					chr	B. BARUFFALO 5/25/91		size	
					appd	B. BARUFFALO 5/25/91		A3	
sheet		revision						type	
index		sheet						Product Customer Drawing	

PRODUCT NUMBER
SEE TABLE

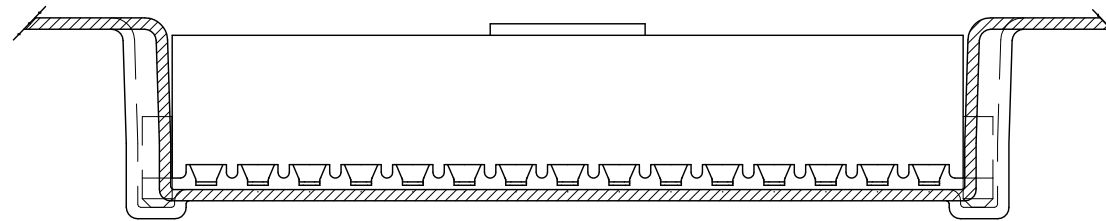
REFERENCE ONLY

TAPE WIDTH'S 32mm AND ABOVE HAS BOTH FEED TRACKS,
BELOW 32mm HAS TOP FEED TRACK ONLY.

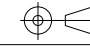

UNREELING
DIRECTION



SECTION A-A



SECTION B-B

mat'l. code —				surface ISO 1302 ✓		tolerance ISO 406 ISO 1101		projection 		product family RIB CAGE			
ltr	ecn	no	dr	date			tolerances unless otherwise specified					title	
AJ				angles		linear	XX ±.01/.3			INCH/MM		.050cc VERT. CARD CONN. SURF. MT. W/LOC. FEATURES	
							XXX ±.005/.13						
				0°±2'			XXXX ±.0020/.050			scale 3:1			
				dr	M. CLOUSER	5/25/91				dwg no		sheet 4 of 4 size	
				engr	B. BARUFFALO	5/25/91				87023		A3	
				chr	B. BARUFFALO	5/25/91							
				appd	B. BARUFFALO	5/25/91							
sheet index		revision sheet									type Product Customer Drawing		

Mouser Electronics

Authorized Distributor

Click to View Pricing, Inventory, Delivery & Lifecycle Information:

[FCI / Amphenol:](#)

[87023-620CTLF](#) [87023-630CTLF](#) [87023-640LF](#) [87023-605TRLF](#) [87023-610TRLF](#)