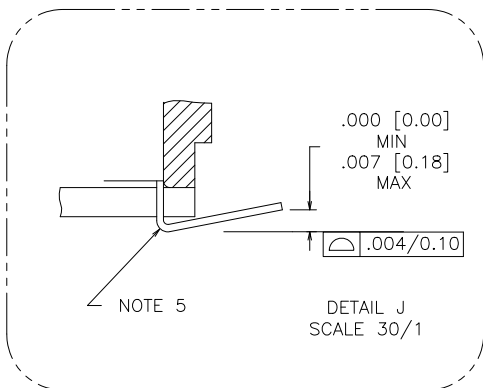
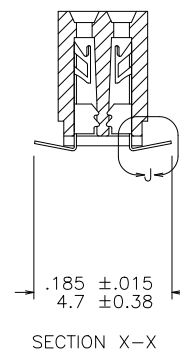
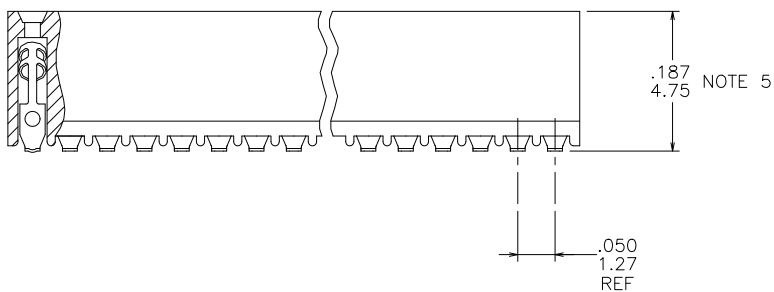
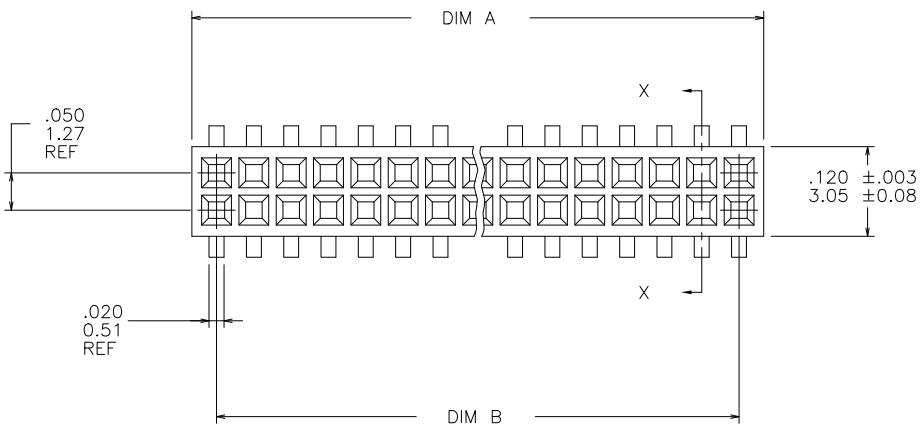





PRODUCT NUMBER
SEE TABLE



mat'l. code —				surface ISO 1302 ✓		tolerance ISO 406 ISO 1101		projection 		product family RIBCAGE			
ltr	ecn no	dr	date	tolerances unless otherwise specified						 INCH/MM		title .050/1.27 CC VERT CARD CONN. ASSY. SURFACE MOUNT	
S	V10994	DLW	3/9/01	angles		linear		.XX±.01/0.3					
T	V11674	CRG	6/22/01					.XXX±.005/0.13					
U	M05-0088	MHT	5/12/05	0°±2°				.XXX±.0020/0.051					
V	M06-0225	ERE	6/12/06	dr	M. CLOUSER	6/26/91				dwg no		sheet 1 of 3	size
W	M06-0370	MHT	9/26/06	enrg	D. WHITING	6/26/91				87021		A3	
X	M09-0058	CMR	4/06/09	chr	C. GINGRICH	6/26/91				type		Product Customer Drawing	
Y	ELX-N-010020	YO	1/30/12	appd	D. WHITING	6/26/91							
sheet	revision		Y	Y	Y								
index	sheet		1	2	3								

PRODUCT NO. NOTE 8	SIZE	DIM A	DIM B	SPECIAL PACKAGING	TAPE WIDTH PITCH	PIECES PER REEL
87021-605	2 X 5	.266/6.756	.200/5.08	NOTE 6	24MM 12MM	750
-610	2 X 10	.516/13.106	.450/11.43	NOTE 6	24MM 12MM	750
-615	2 X 15	.766/19.456	.700/17.78	NOTE 6	44MM 12MM	500
-620	2 X 20	1.016/25.806	.950/24.13	NOTE 6	44MM 12MM	500
-625	2 X 25	1.266/32.156	1.200/30.48	NOTE 6	44MM 12MM	500
-630	2 X 30	1.516/38.506	1.450/36.83	NO		---
-635	2 X 35	1.766/44.856	1.700/43.18	NO		---
-640	2 X 40	2.016/51.206	1.950/49.53	NO		---
-645	2 X 45	2.266/57.556	2.200/55.88	NO		---
87021-650	2 X 50	2.516/63.906	2.450/62.23	NO		---

- NOTES :
- ① HOUSING MATERIAL :
GLASS FILLED THERMOPLASTIC FLAME RETARDANT PER UL94V-0.
COLOR : NATURAL
- ② TERMINAL MATERIAL : BeCu
- ③ TERMINAL PLATING :
30u"/.76u MIN HARD GOLD OR GXT OVER Ni ON CONTACT ZONES.
100u"/2.54u MIN Sn OVER Ni IN SOLDERING ZONES.
OTHERWISE GOLD FLASH OR UNPLATED.
- 4 APPLICATION INFORMATION :
- A. RECOMMENDED MOUNTING PAD PATTERN IS SHOWN IN FIGURE "A".
- B. MATING PINS TO BE .0176/0.447 TO .0181/0.459 DIA.
- C. MATING PIN TIPS TO BE IN TRUE POSITION TO MATING GRID WITHIN .008/0.20 DIA.
- D. SUGGESTED MATING PIN LENGTH .130/3.30 ±.010/0.25.
- ⑤ LEAD TIPS TO BE ABOVE HEEL, UP TO .007/0.18 MAX.
COPLANARITY TO BE MEASURED AT LOWEST POINT (HEEL).
- ⑥ ADD "TR" TO END OF DASH NUMBER FOR TAPE AND REEL PACKAGE WITH CAP. TOOLED ONLY FOR NOTED CONNECTORS.
7. ADD "CT" TO END OF DASH NUMBER FOR CONNECTOR WITH VACUUM CAP IN TUBE.
- ⑧ ADD "LF" SUFFIX AT THE END OF PART NUMBER FOR LEAD FREE OPTION.
9. THE HOUSING WILL WITHSTAND EXPOSURE TO 260°C PEAK TEMPERATURE FOR 20 SECONDS IN A CONVECTION, INFRA-RED OR VAPOR PHASE REFLOW OVEN. SEE APPLICATION NOTE/PROCEDURES IF THEY ARE AVAILABLE.
10. THIS PRODUCT MEETS EUROPEAN UNION DIRECTIVES AND OTHER COUNTRY REGULATION AS DESCRIBED IN GS-22-008.
11. PRODUCT SPEC PER BUS-12-087.

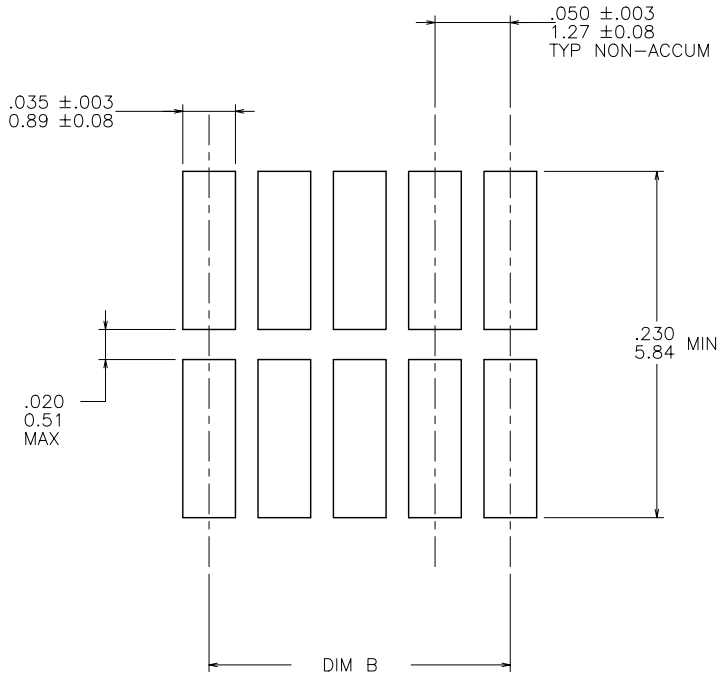


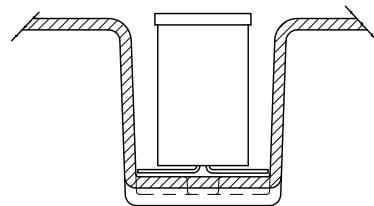
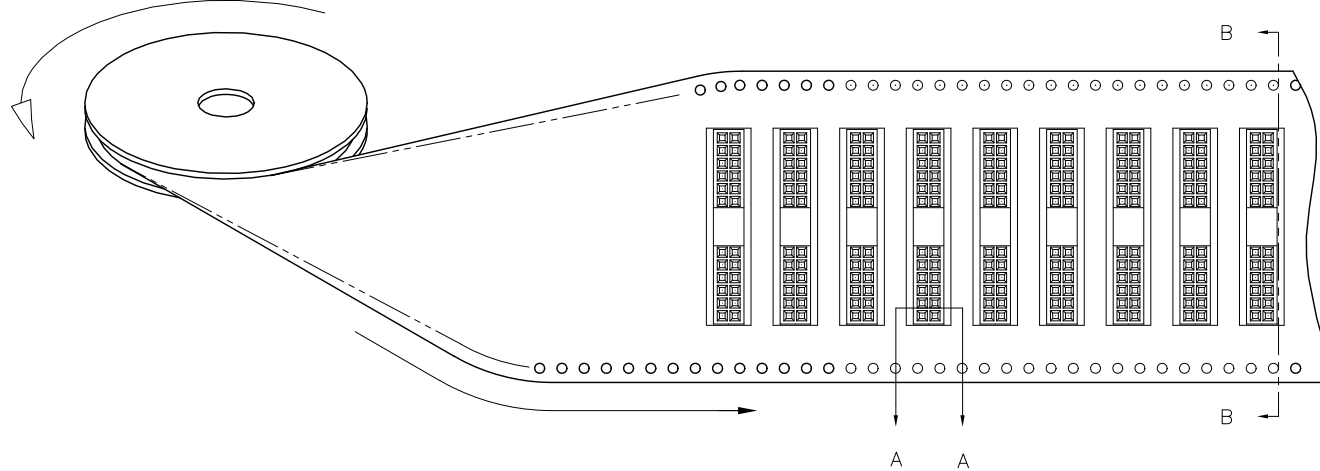
FIGURE "A"
RECOMMENDED PCB
MOUNTING PAD PATTERN

mat'l. code		surface		tolerance		projection		product family			
-		ISO 1302 ✓		ISO 406 ISO 1101		ISO 1101		RIBCAGE			
ltr	ecn	no	dr	date	tolerances unless otherwise specified			title			
Y					angles	linear	INCH/MM		.050/1.27 CC VERT CARD CONN. ASSY. SURFACE MOUNT		
							scale 4:1				
			dr	M. CLOUSER	6/26/91	dwg no				sheet 2 of 3	size
			enr	D. WHITING	6/26/91	87021				A3	
			chr	C. GINGRICH	6/26/91	type				Product	Customer Drawing
			appd	D. WHITING	6/26/91						
sheet	revision										
index	sheet										

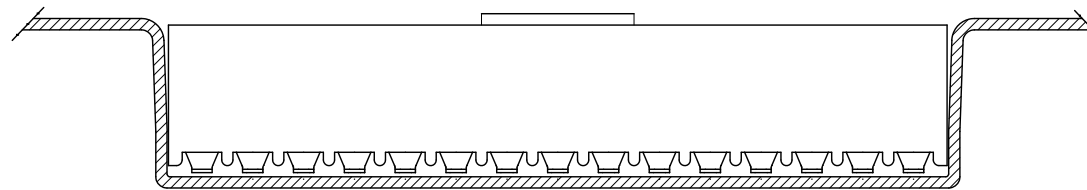
REFERENCE ONLY

TAPE WIDTH'S 32mm AND ABOVE HAS BOTH FEED TRACKS,
BELOW 32mm HAS TOP FEED TRACK ONLY.

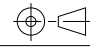
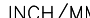

UNREELING
DIRECTION



SECTION A-A



SECTION B-B

mat'l. code —				surface ISO 1302 ✓		tolerance ISO 406 ISO 1101		projection 		product family RIBCAGE				
ltr	ecn	no	dr	date						title				
Y				angles		linear	.XX±.01/0.3		 INCH/MM		.050/1.27 CC VERT CARD			
				0°±2'			.XXX±.005/0.13				CONN. ASSY. SURFACE MOUNT			
							.XXXX±.0020/0.051		scale 4:1					
				dr	M. CLOUSER	6/26/91				dwg no		sheet 3 of 3		size
				enr	D. WHITING	6/26/91				87021		A3		
				chr	C. GINGRICH	6/26/91								
				appd	D. WHITING	6/26/91								
sheet index		revision sheet								type		Product	Customer	Drawing

Mouser Electronics

Authorized Distributor

Click to View Pricing, Inventory, Delivery & Lifecycle Information:

[FCI / Amphenol:](#)

[87021-625TRLF](#) [87021-615LF](#) [87021-630LF](#) [87021-635LF](#) [87021-645LF](#) [87021-650LF](#) [87021-615TRLF](#) [87021-615](#)